

Beamever

FORTE 3D LARGE

Designer's Custom Playground

3D Bending · Static White

Features

- Flexible 3D bending for seamless integration with complex contours
- IK10 impact resistance for demanding environments
- IP68 rated, ideal for outdoor uses, not for underwater project
- 5 years warranty

FORTE 3D LARGE HE

- Up to 105 lm/W (308 lm/ft) for energy-efficient illumination
- 36ft single-feed runs for facades and architectural accents

FORTE 3D LARGE LONG RUN

- Up to 328ft dual-feed for seamless, uninterrupted light lines
- Ideal for maximum single-feed length with minimal power access

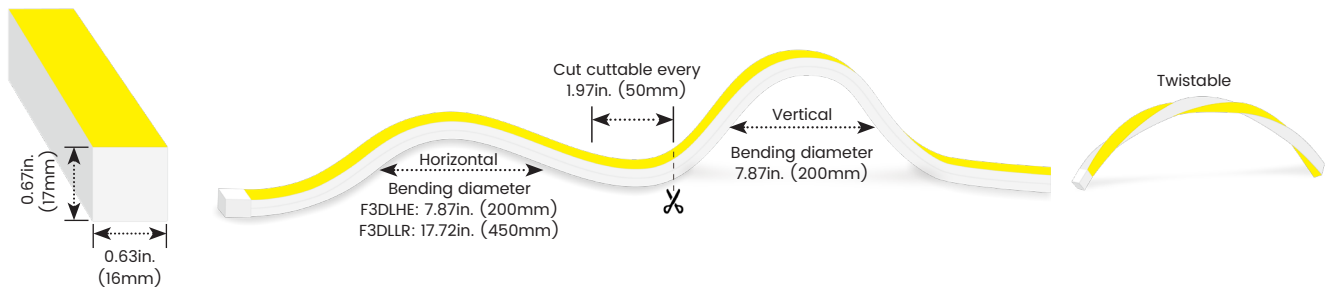
Applications

Architectural facades, building contours, landscape accents, bridges, walkways, transit hubs, staircases, and outdoor feature walls, etc.

Date	Fixture type
Project name	Project phase



Bending Directions & Diameters



Order Code

Assembly Builder

Model	Environment	Voltage	CCT	Power	End Cap	Left Feed Entry
F3DLHE	W8-Wet (IP68)	24V-DC24V	22K-2200K	1.5-1.46W/ft (F3DLLR only)	FT Flush Translucent	F Front OW Open wire 3.28ft (1m)
F3DLLR			27K-2700K	2.9-2.93W/ft (F3DLHE/F3DLLR)	FO Flush Opaque	B Bottom MC Male connector with 0.98ft (30cm) cable
			30K-3000K			S Side FC Female connector with 0.98ft (30cm) cable
			35K-3500K			C Closed NA Only for Closed Feed Entry
			40K-4000K			
			57K-5700K			

*F3DLHE:FORTE 3D LARGE HE

*F3DLLR:FORTE 3D LARGE LONG RUN

Assembly Builder

Mounting Order Code

Right Feed Entry			Length	Product Code
F	Front	OW Open wire 3.28ft (1m)	Max. nominal 36.1ft (11m)	Please select on the Mounting Options page
B	Bottom	MC Male connector with 0.98ft (30cm) cable	*For F3DLHE	
S	Side	FC Female connector with 0.98ft (30cm) cable	Max. nominal 180.4ft (55m)	
C	Closed	NA Only for Closed Feed Entry	*For F3DLLR, 1.46W/ft	
			Max. nominal 131.2ft (40m)	
			*For F3DLLR, 2.93W/ft	
			Increment 1.97in. (50mm)	

*We will list the nearest actual manufacturing length on the quotation, based on your requested length.

Lumen Output (lm/ft)

CCT	FORTE 3D LARGE HE	FORTE 3D LARGE LONG RUN	
	2.93W/ft	1.46W/ft	2.93W/ft
■ 2200K	262	73	162
■ 2700K	293	88	180
■ 3000K	308	98	189
■ 3500K	317	101	192
■ 4000K	323	101	192
■ 5700K	308	99	191
Max. Run for Class 2	27.3ft (8.3m)	54.8ft (16.7m)	27.3ft (8.3m)
Max. Run Supported Length	36.1ft (11m)	180.4ft (55m)	131.2ft (40m)

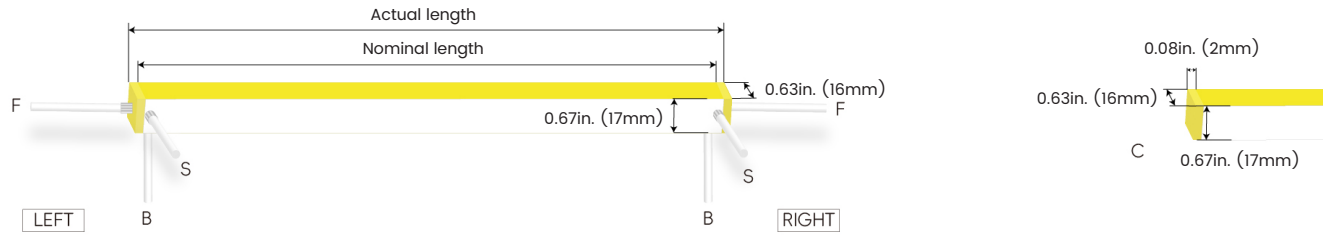
*Typically installations in USA and Canada comply with Class 2 requirements

Technical Details

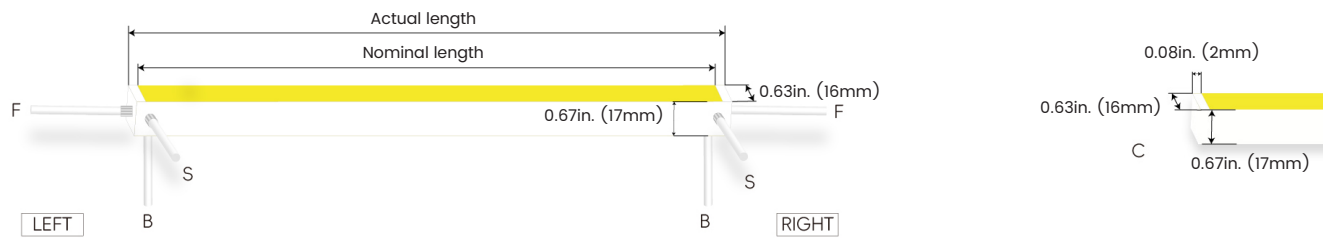
Parameter	FORTE 3D LARGE HE	FORTE 3D LARGE LONG RUN
Efficacy	105.2lm/W @3000K 2.93W	64.6lm/W @3000K 2.93W
CRI	Ra≥90	Ra≥90
Beam Angle	110°	110°
LED MacAdam	3 steps	3 steps
IK Rating	IK10 (with aluminium profile,walk over only)	IK10 (with aluminium profile,walk over only)
Average Life (L70B10)	>44,000 hours	>44,000 hours
Storage Temperature	-40°F ~ 149°F (-40°C~ 65°C)	-40°F ~ 149°F (-40°C~ 65°C)
Operating Temperature	-40°F ~ 149°F (-40°C~ 65°C)	-40°F ~ 149°F (-40°C~ 65°C)

Feed Entry / End Cap Options

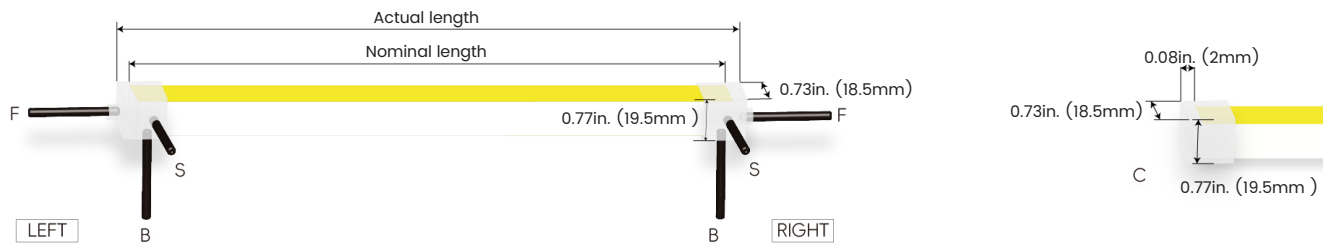
FT: Flush Translucent – IP68, factory-made only



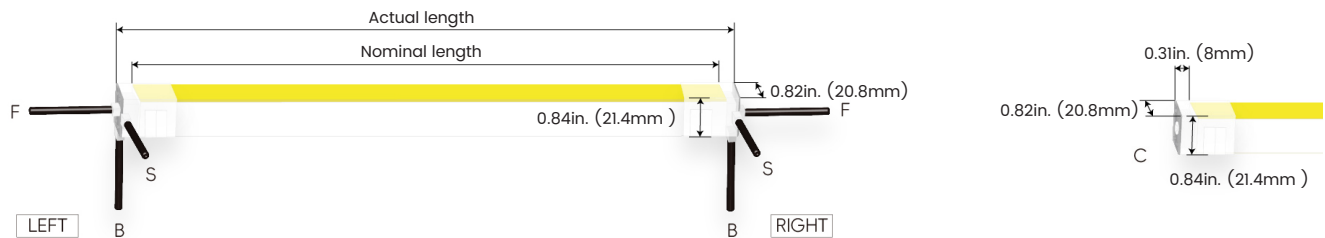
FO: Flush Opaque – IP68, factory-made only



Silicone end cap – IP67, for field cuttable only



Mechanical end cap with screws – IP67, for field cuttable only, FORTE 3D LARGE LONG RUN only



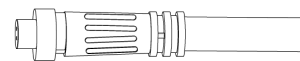
Connector Wire Options



OW: Open wire, **Dry** only
Standard 3.28ft (1m), 18 AWG,
wire length customizable

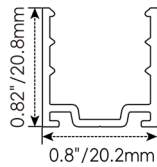
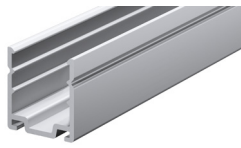


MC: Male connector, **Wet**
Standard 0.98ft (30cm), 18 AWG



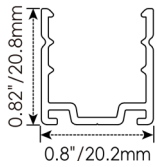
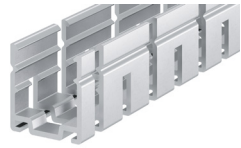
FC: Female connector, **Wet**
Standard 0.98ft (30cm), 18 AWG

Mounting Options



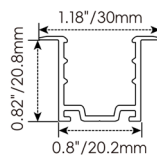
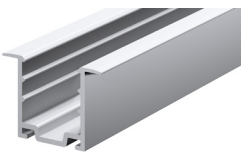
F3DL-SC

Name	Straight surface channel
Material	Aluminum
Standard Length	3.28ft (1M)



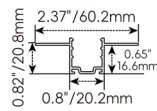
F3DL-BC

Name	Bendable surface channel
Material	Aluminum
Standard Length	3.28ft (1M)
Min. Bending Diameter	23.6in. (600mm)



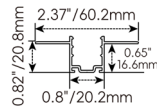
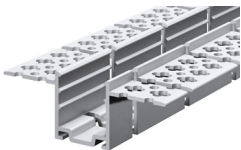
F3DL-RC

Name	Straight recessed channel
Material	Aluminum
Standard Length	3.28ft (1M)



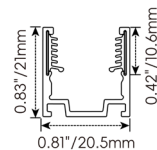
F3DL-MC

Name	Mud-in channel
Material	Aluminum
Standard Length	3.28ft (1M)



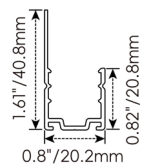
F3DL-BMC

Name	Bendable mud-in channel
Material	Aluminum
Standard Length	3.28ft (1M)
Min. Top Bending Diameter	23.6in. (600mm)
Min. Side Bending Diameter	63in. (1600mm)



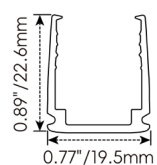
F3DL-SCS

Name	Straight surface channel
Material	Aluminum with silicone groove
Standard Length	3.28ft (1M)



F3DL-LBC

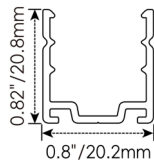
Name	Light-block channel
Material	Aluminum
Standard Length	3.28ft (1M)



F3DL-PC

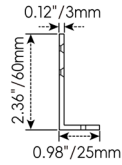
Name	PC channel
Material	Polycarbonate
Standard Length	3.28ft (1M)

Mounting Options



F3DL-CL

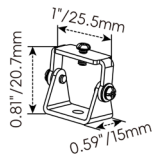
Name	Mounting clip
Material	Aluminum
Standard Length	0.98in. (25mm)



F3DL-LS

Name	L-shaped mounting bracket
Material	Aluminum
Standard Length	0.79in. (20mm)

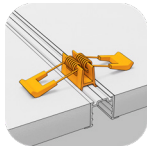
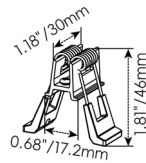
* F3DL-LS must be installed with F3DL-SC



F3DL-AC

Name	Adjustable mounting clip
Material	Stainless steel
Standard Length	1 in. (25.5mm)

* F3DL-AC must be installed with F3DL-SC



F3DL-RC-SPC

Name	Spring clip
Standard Pkg	1pcs

* F3DL-RC-SPC must be installed with F3DL-RC

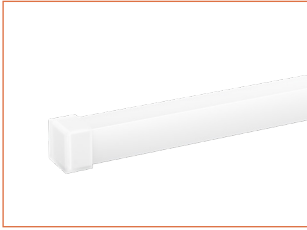
Beamever

FORTE 3D LARGE

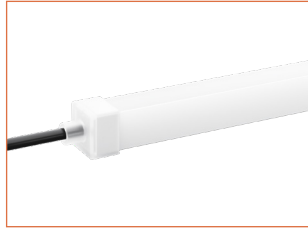
Designer's Custom Playground

3D Bending · Static White

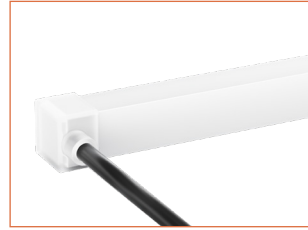
Silicone End Caps (Optional, purchase for extra)



F3DL-SEC-C
Silicone closed end cap



F3DL-SEC-F-2P
Silicone end cap front entry with 0.98ft (30cm) cable, 2 pin

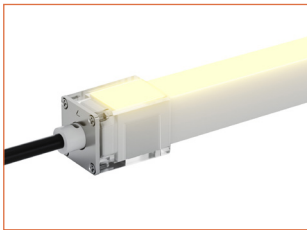


F3DL-SEC-S-2P
Silicone end cap side entry with 0.98ft (30cm) cable, 2 pin

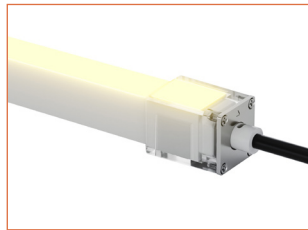


F3DL-SEC-B-2P
Silicone end cap bottom entry with 0.98ft (30cm) cable, 2 pin

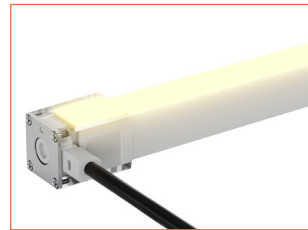
Mechanical End Caps for FORTE 3D LARGE LONG RUN only (Optional, purchase for extra)



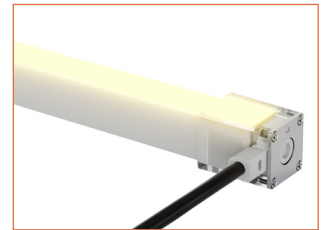
F3DLLR-MEC-LF-2P
Mechanical end cap with screws, left front entry, 0.98ft (30cm) cable, 2 pin, IP67



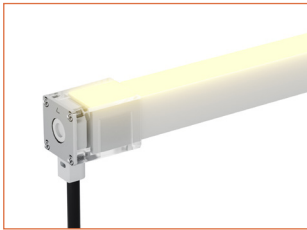
F3DLLR-MEC-RF-2P
Mechanical end cap with screws, right front entry, 0.98ft (30cm) cable, 2 pin, IP67



F3DLLR-MEC-LS-2P
Mechanical end cap with screws, left side entry, 0.98ft (30cm) cable, 2 pin, IP67



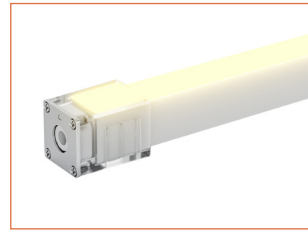
F3DLLR-MEC-RS-2P
Mechanical end cap with screws, right side entry, 0.98ft (30cm) cable, 2 pin, IP67



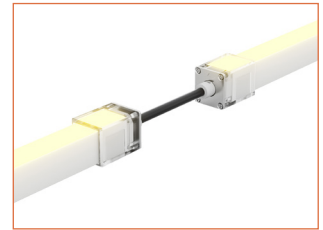
F3DLLR-MEC-LB-2P
Mechanical end cap with screws, left bottom entry, 0.98ft (30cm) cable, 2 pin, IP67



F3DLLR-MEC-RB-2P
Mechanical end cap with screws, right bottom entry, 0.98ft (30cm) cable, 2 pin, IP67



F3DLLR-MEC-C
Mechanical closed end cap with screws, IP67



F3DLLR-JC-F-2P
Jumper connector front entry, 7cm (0.23ft) cable, 2 pin, IP67

Additional Accessories (Optional, purchase for extra)



MCW-2P-67
Male connector, 0.98ft (30cm) white cable, 2 pin, IP67, Wet, 18 AWG



FCW-2P-67
Female connector, 0.98ft (30cm) white cable, 2 pin, IP67, Wet, 18 AWG



MCB-2P-67
Male connector, 0.98ft (30cm) black cable, 2 pin, IP67, Wet, 18 AWG



FCB-2P-67
Female connector, 0.98ft (30cm) black cable, 2 pin, IP67, Wet, 18 AWG

Drivers

Non-dimmable

Code	Max Load	Input	Output	Class 2	With Junction Box	Environment	Size (L x W x H)
KV-24030-ASW	30W	100-277VAC	24V	Yes	No	Dry/Damp	6.1 x 2.1 x 0.8in. (15.5 x 5.4 x 2cm)
KV-24060-ASW	60W	100-277VAC	24V	Yes	No	Dry/Damp	7 x 2.4 x 0.9in. (17.8 x 6.1 x 2.4cm)
KV-24096-ASW	96W	100-277VAC	24V	Yes	No	Dry/Damp/Wet	9.1 x 2.8 x 1.7in. (23 x 7 x 4.3cm)
KV-24300-ASW	300W	100-277VAC	24V	No	No	Dry/Damp/Wet	10.9 x 3.1 x 1.86 in. (27.6 x 7.8 x 4.7cm)

Phase cut/Triac-dimmable

Code	Max Load	Input	Output	Class 2	With Junction Box	Environment	Size (L x W x H)
KVF-24030-TDW	30W	100-277VAC	24V	Yes	No	Dry/Damp	6.1 x 2.1 x 0.8in. (15.5 x 5.4 x 2cm)
KVF-24060-TDW	60W	100-277VAC	24V	Yes	No	Dry/Damp	7 x 2.4 x 0.9in. (17.8 x 6.1 x 2.4cm)
KVF-24096-TDW	96W	100-277VAC	24V	Yes	No	Dry/Damp/Wet	9.1 x 2.8 x 1.7in. (23 x 7 x 4.3cm)
KVF-24030-TDWJ	30W	100-277VAC	24V	Yes	Yes	Dry/Damp	6.5 x 3.6 x 1in. (16.5 x 9.2 x 2.6cm)
KVF-24060-TDWJ	60W	100-277VAC	24V	Yes	Yes	Dry/Damp	7.4 x 3.6 x 1in. (18.8 x 9.2 x 2.6cm)
KVF-24096-TDWJ	96W	100-277VAC	24V	Yes	Yes	Dry/Damp	8.7 x 3.7 x 1.6in. (22 x 9.3 x 4.1cm)
KVF-24192-TDWJ	192W (96Wx2)	100-277VAC	24V	Yes	Yes	Dry/Damp	10.9 x 4.3 x 1.8in. (27.8 x 11 x 4.5cm)
KVF-24288-TDWJ	288W (96Wx3)	100-277VAC	24V	Yes	Yes	Dry/Damp	11.9 x 4.3 x 1.8in. (30.1 x 11 x 4.5cm)
KVF-24384-TDWJ	384W (96Wx4)	100-277VAC	24V	Yes	Yes	Dry/Damp	12.7 x 5.5 x 1.9in. (32.3 x 14 x 4.8cm)

4 in 1-dimmable (0-10V/1-10V/Potentiometer/10V PWM)

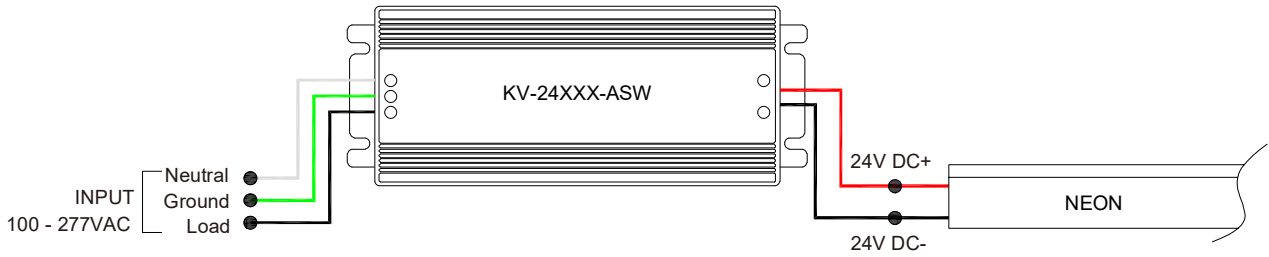
Code	Max Load	Input	Output	Class 2	With Junction Box	Environment	Size (L x W x H)
KVD-24030-DIM	30W	100-277VAC	24V	Yes	No	Dry/Damp	6.1 x 2.1 x 0.8in. (15.5 x 5.4 x 2cm)
KVD-24060-DIM	60W	100-277VAC	24V	Yes	No	Dry/Damp	7 x 2.4 x 0.9in. (17.8 x 6.1 x 2.4cm)
KVD-24096-DIM	96W	100-277VAC	24V	Yes	No	Dry/Damp/Wet	9.1 x 2.8 x 1.7in. (23 x 7 x 4.3cm)
KVD-24030-DIMJ	30W	100-277VAC	24V	Yes	Yes	Dry/Damp	6.5 x 3.6 x 1in. (16.5 x 9.2 x 2.6cm)
KVD-24060-DIMJ	60W	100-277VAC	24V	Yes	Yes	Dry/Damp	7.4 x 3.6 x 1in. (18.8 x 9.2 x 2.6cm)
KVD-24096-DIMJ	96W	100-277VAC	24V	Yes	Yes	Dry/Damp	8.7 x 3.7 x 1.6in. (22 x 9.3 x 4.1cm)
KVD-24192-DIMJ	192W (96Wx2)	100-277VAC	24V	Yes	Yes	Dry/Damp	10.9 x 4.3 x 1.8in. (27.8 x 11 x 4.5cm)
KVD-24288-DIMJ	288W (96Wx3)	100-277VAC	24V	Yes	Yes	Dry/Damp	11.9 x 4.3 x 1.8in. (30.1 x 11 x 4.5cm)
KVD-24384-DIMJ	384W (96Wx4)	100-277VAC	24V	Yes	Yes	Dry/Damp	12.7 x 5.5 x 1.9in. (32.3 x 14 x 4.8cm)

5 in 1-dimmable (Triac/0-10V/1-10V/Potentiometer/10V PWM)

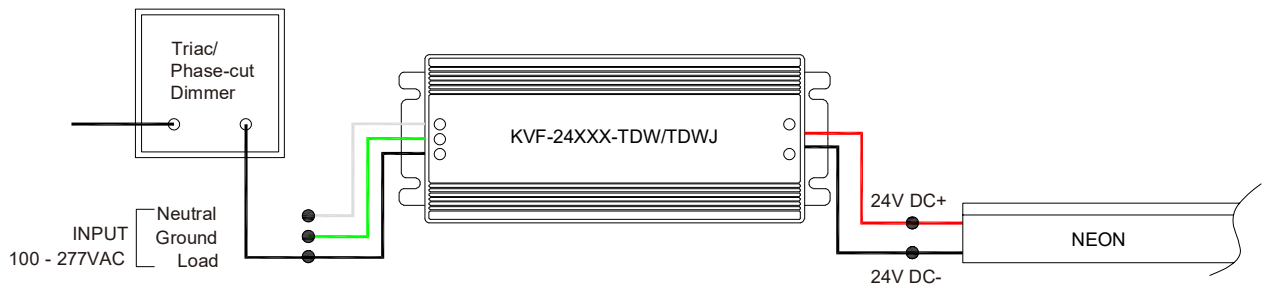
Code	Max Load	Input	Output	Class 2	With Junction Box	Environment	Size (L x W x H)
KVG-24030-DW	30W	100-277VAC	24V	Yes	No	Dry/Damp	6.1 x 2.1 x 0.8in. (15.5 x 5.4 x 2cm)
KVG-24060-DW	60W	100-277VAC	24V	Yes	No	Dry/Damp	7 x 2.4 x 0.9in. (17.8 x 6.1 x 2.4cm)
KVG-24096-DW	96W	100-277VAC	24V	Yes	No	Dry/Damp/Wet	9.1 x 2.8 x 1.7in. (23 x 7 x 4.3cm)
KVG-24030-DWJ	30W	100-277VAC	24V	Yes	Yes	Dry/Damp	6.5 x 3.7 x 1.6in. (16.5 x 9.5 x 4cm)
KVG-24060-DWJ	60W	100-277VAC	24V	Yes	Yes	Dry/Damp	7.4 x 3.7 x 1.6in. (18.8 x 9.5 x 4cm)
KVG-24096-DWJ	96W	100-277VAC	24V	Yes	Yes	Dry/Damp	8.7 x 3.7 x 1.6in. (22 x 9.5 x 4cm)
KVG-C24192-DWJ	192W (96Wx2)	100-277VAC	24V	Yes	Yes	Dry/Damp	10.9 x 4.3 x 1.8in. (27.8 x 11 x 4.5cm)
KVG-C24288-DWJ	288W (96Wx3)	100-277VAC	24V	Yes	Yes	Dry/Damp	11.9 x 4.3 x 1.8in. (30.1 x 11 x 4.5cm)
KVG-C24384-DWJ	384W (96Wx4)	100-277VAC	24V	Yes	Yes	Dry/Damp	12.8 x 5.5 x 1.9in. (32.5 x 14 x 4.8cm)

Wiring Diagram

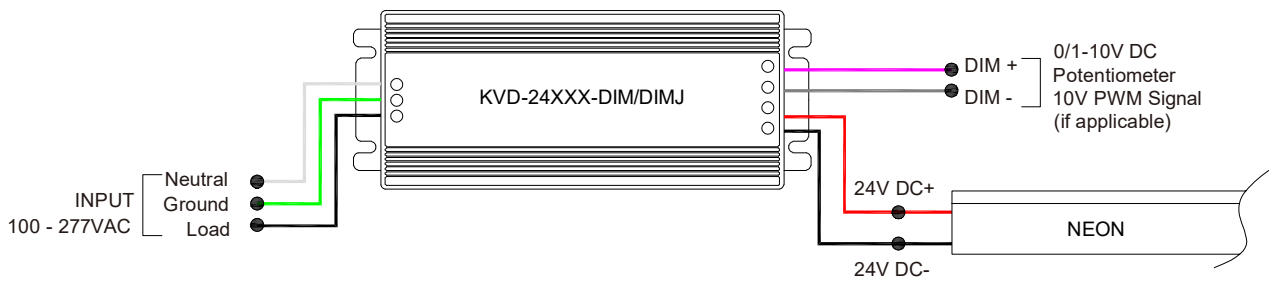
Non-dimmable



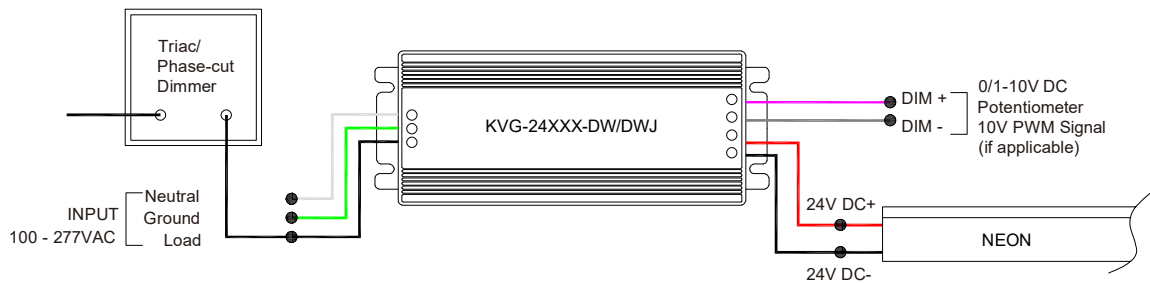
Phase cut/Triac-dimmable



4 in 1-dimmable (0-10V/1-10V/Potentiometer/10V PWM)



5 in 1-dimmable (Triac/0-10V/1-10V/Potentiometer/10V PWM)



24V Voltage Drop & Maximum Wire Length Chart

Based on 24V voltage with a 3% voltage drop allowance. Indicates the maximum wire length from the power supply to the start of the run.

Total load	8AWG	10AWG	12AWG	14AWG	16AWG	18AWG	20AWG	22AWG
10W / 0.4A	1588ft (484.0m)	999ft (304.5m)	628ft (191.4m)	395ft (120.4m)	248ft (75.5m)	156ft (47.5m)	98ft (29.8m)	61ft (18.5m)
20W / 0.8A	794ft (242.0m)	499ft (152.1m)	314ft (95.7m)	197ft (60.0m)	124ft (37.8m)	78ft (23.7m)	49ft (14.9m)	30ft (9.1m)
30W / 1.3A	529ft (161.2m)	333ft (101.5m)	209ft (63.7m)	131ft (39.9m)	82ft (24.9m)	52ft (15.8m)	32ft (9.7m)	20ft (6.1m)
40W / 1.7A	397ft (121.0m)	249ft (75.9m)	157ft (47.8m)	98ft (29.8m)	62ft (18.9m)	39ft (11.8m)	24ft (7.3m)	15ft (4.5m)
50W / 2.1A	317ft (96.6m)	199ft (60.6m)	125ft (38.1m)	79ft (24.0m)	49ft (14.9m)	31ft (9.4m)	19ft (5.7m)	12ft (3.6m)
60W / 2.5A	264ft (80.4m)	166ft (50.6m)	104ft (31.7m)	65ft (19.8m)	41ft (12.5m)	26ft (7.9m)	16ft (4.8m)	10ft (3.0m)
70W / 2.9A	226ft (68.8m)	142ft (43.2m)	89ft (27.1m)	56ft (17.0m)	35ft (10.6m)	22ft (6.7m)	14ft (4.2m)	8ft (2.4m)
80W / 3.3A	198ft (60.3m)	124ft (37.8m)	78ft (23.7m)	49ft (14.9m)	31ft (9.4m)	19ft (5.7m)	12ft (3.6m)	7ft (2.1m)
90W / 3.8A	176ft (53.6m)	111ft (33.8m)	69ft (21.0m)	43ft (13.1m)	27ft (8.2m)	17ft (5.1m)	10ft (3.0m)	6ft (1.8m)
100W / 4.2A	158ft (48.1m)	99ft (30.1m)	62ft (18.9m)	39ft (11.8m)	24ft (7.3m)	15ft (4.5m)	9ft (2.7m)	6ft (1.8m)
110W / 4.6A	144ft (43.8m)	90ft (27.4m)	57ft (17.3m)	35ft (10.6m)	22ft (6.7m)	14ft (4.2m)	9ft (2.7m)	5ft (1.5m)
120W / 5.0A	132ft (40.2m)	83ft (25.3m)	52ft (15.8m)	32ft (9.7m)	20ft (6.1m)	13ft (3.9m)	8ft (2.4m)	5ft (1.5m)
130W / 5.4A	122ft (37.1m)	76ft (23.1m)	48ft (14.6m)	30ft (9.1m)	19ft (5.7m)	12ft (3.6m)	7ft (2.1m)	4ft (1.2m)
140W / 5.8A	113ft (34.4m)	71ft (21.6m)	44ft (13.4m)	28ft (8.5m)	17ft (5.1m)	11ft (3.3m)	7ft (2.1m)	4ft (1.2m)
150W / 6.3A	105ft (32.0m)	66ft (20.1m)	41ft (12.5m)	26ft (7.9m)	16ft (4.8m)	10ft (3.0m)	6ft (1.8m)	4ft (1.2m)
160W / 6.7A	99ft (30.1m)	62ft (18.9m)	39ft (11.8m)	24ft (7.3m)	15ft (4.5m)	9ft (2.7m)	6ft (1.8m)	3ft (0.9m)
170W / 7.1A	93ft (28.3m)	58ft (17.6m)	36ft (10.9m)	23ft (7.0m)	14ft (4.2m)	9ft (2.7m)	5ft (1.5m)	3ft (0.9m)
180W / 7.5A	88ft (26.8m)	55ft (16.7m)	34ft (10.3m)	22ft (6.7m)	13ft (3.9m)	8ft (2.4m)	5ft (1.5m)	3ft (0.9m)
190W / 7.9A	83ft (25.3m)	52ft (15.8m)	33ft (10.0m)	20ft (6.0m)	13ft (3.9m)	8ft (2.4m)	5ft (1.5m)	3ft (0.9m)
200W / 8.3A	79ft (24.0m)	49ft (14.9m)	31ft (9.4m)	19ft (5.7m)	12ft (3.6m)	7ft (2.1m)	4ft (1.2m)	3ft (0.9m)
210W / 8.8A	75ft (22.8m)	47ft (14.3m)	29ft (8.8m)	18ft (5.4m)	11ft (3.3m)	7ft (2.1m)	4ft (1.2m)	2ft (0.6m)
220W / 9.2A	72ft (21.9m)	45ft (13.7m)	28ft (8.5m)	18ft (5.4m)	11ft (3.3m)	7ft (2.1m)	4ft (1.2m)	2ft (0.6m)
230W / 9.6A	69ft (21.0m)	43ft (13.1m)	27ft (8.2m)	17ft (5.1m)	10ft (3.0m)	6ft (1.8m)	4ft (1.2m)	2ft (0.6m)
240W / 10.0A	66ft (20.1m)	41ft (12.5m)	26ft (7.9m)	16ft (4.8m)	10ft (3.0m)	6ft (1.8m)	4ft (1.2m)	2ft (0.6m)
250W / 10.4A	63ft (19.2m)	40ft (12.1m)	25ft (7.6m)	15ft (4.5m)	9ft (2.7m)	6ft (1.8m)	3ft (0.9m)	2ft (0.6m)