

Features

- 2.8in. addressable for fluid RGBW animations and media effects
- Multi-directional bending, no signal loss for media facades
- IP68 rated, ideal for outdoor uses, not for underwater project
- 3 years warranty

Applications

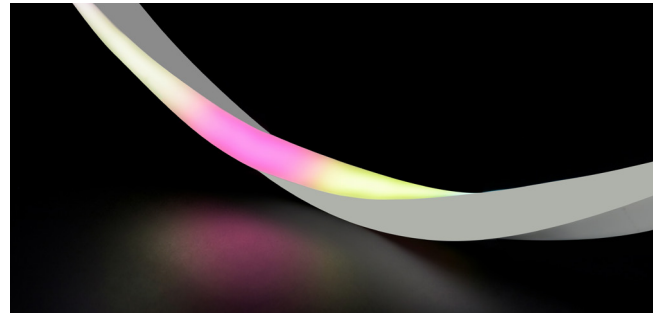
Architectural facades, building contours, landscape accents, bridges, walkways, transit hubs, staircases, and outdoor feature walls, etc.

Date

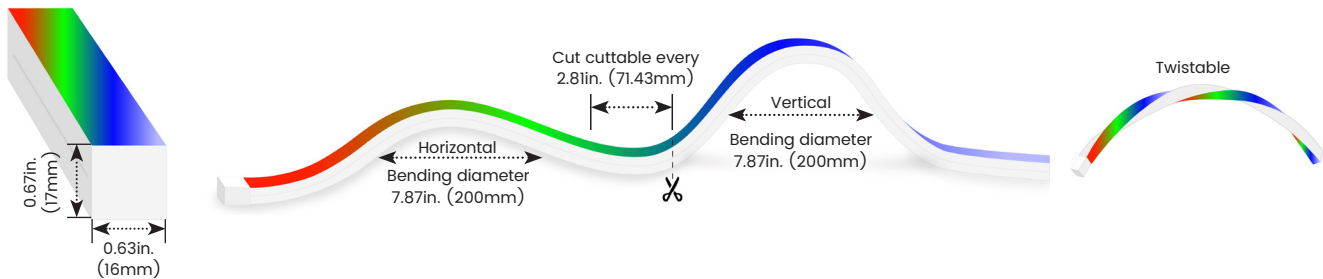
Fixture type

Project name

Project phase



Bending Directions & Diameters



Order Code

Assembly Builder

Model	Environment	Voltage	CCT	Power	End Cap	Left Feed Entry
F3DL	W8-Wet (IP68)	24V-DC24V	PRGBW27K-Pixel RGBW2700K PRGBW30K-Pixel RGBW3000K PRGBW35K-Pixel RGBW3500K PRGBW40K-Pixel RGBW4000K	4.6-4.57W/ft	FT Flush Translucent FO Flush Opaque	F Front B Bottom S Side C Closed OW Open wire 3.28ft (1m) MC Male connector with 0.98ft (30cm) cable FC Female connector with 0.98ft (30cm) cable NA Only for Closed Feed Entry

Assembly Builder

Right Feed Entry	Length
F Front B Bottom S Side C Closed	OW Open wire 3.28ft (1m) MC Male connector with 0.98ft (30cm) cable FC Female connector with 0.98ft (30cm) cable NA Only for Closed Feed Entry
	Max. nominal 26.2ft (8m) Increment 2.8in. (71.43mm)

Mounting Order Code

Product Code
Please select on the Mounting Options page

*We will list the nearest actual manufacturing length on the quotation, based on your requested length.

Lumen Output (lm/ft)

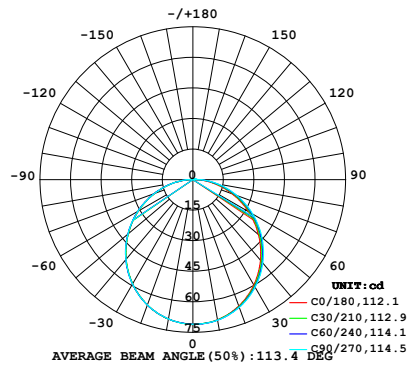
CCT	4.57W/ft
■ R	9
■ G	32
■ B	7
■ W27K	23
■ W30K	25
■ W35K	26
■ W40K	26
■ PRGBW27K	71
■ PRGBW30K	73
■ PRGBW35K	74
■ PRGBW40K	74
Max. Run for Class 2	17.5ft (5.3m)
Max. Run Supported Length	26.2ft (8m)

*Typically installations in USA and Canada comply with Class 2 requirements

Photometry

F3DL-W8-24V-PRGBW30K-4.6-FT-F-OW-F-OW

FORTE 3D LARGE PIXEL RGBW, 3D Bend, PRGBW30K, 4.57W/ft



Zonal Lumen Summary

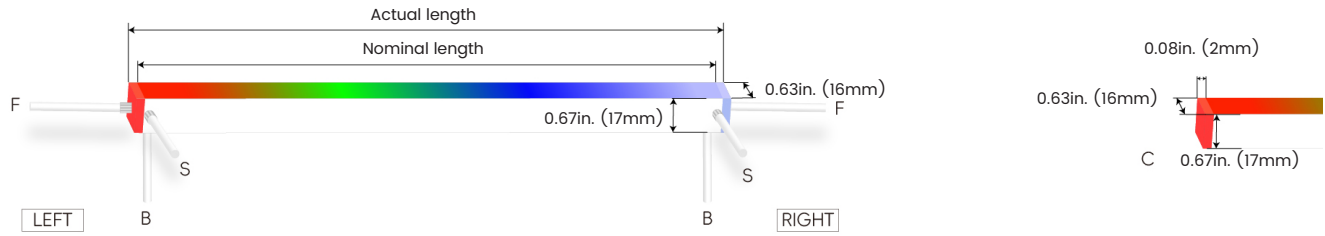
Zone	Lumen	% Fixture
0-30	55.0	26.0%
0-40	90.1	42.5%
0-60	159.9	75.4%
0-90	209.0	98.6%
0-180	212.1	100.0%

Technical Details

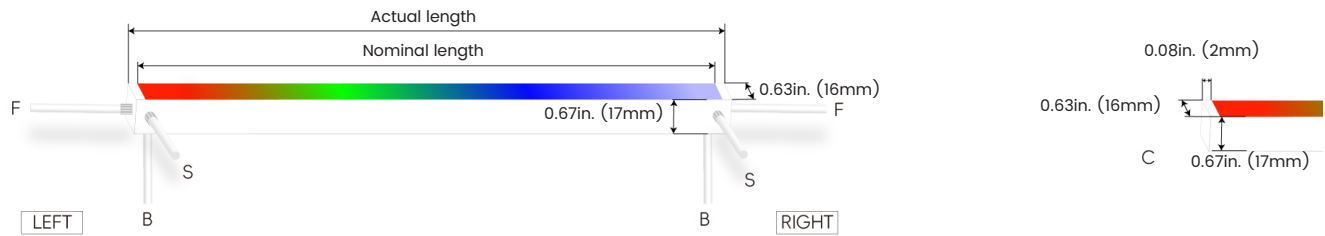
Efficacy	16lm/W @RGBW30K 4.57W
CRI	Ra>80
Beam Angle	110°
IK Rating	IK10 (with aluminium profile, walk over only)
Average Life (L70B10)	>32,000 hours
IC Model	UCS 512CLN
Pixel Size	2.8in/pixel
Storage Temperature	-40°F ~ 149°F (-40°C ~ 65°C)
Operating Temperature	-40°F ~ 149°F (-40°C ~ 65°C)

Feed Entry / End Cap Options

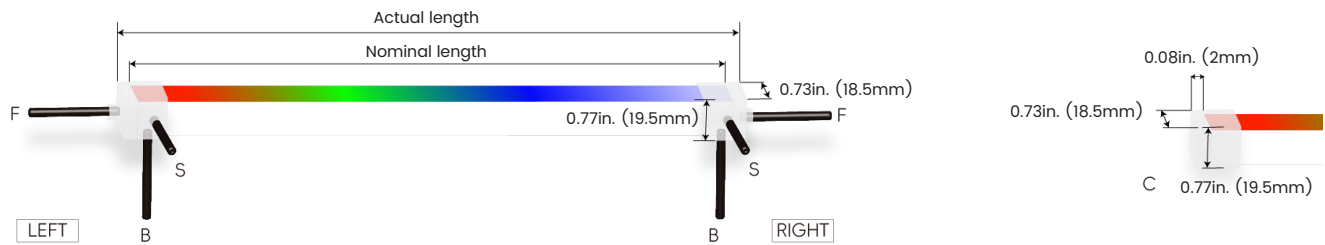
FT: Flush Translucent – IP68, factory-made only



FO: Flush Opaque – IP68, factory-made only



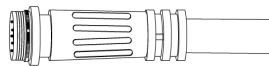
Silicone end cap – IP67, for field cuttable only



Connector Wire Options



OW: Open wire, **Dry only**
Standard 3.28ft (1m), 20 AWG,
wire length customizable

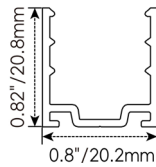
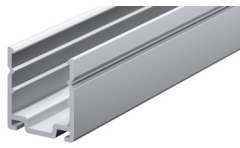


MC: Male connector, **Wet**
Standard 0.98ft (30cm), 22 AWG



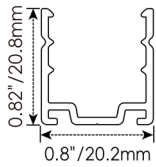
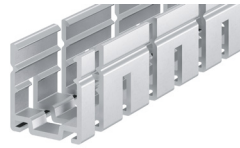
FC: Female connector, **Wet**
Standard 0.98ft (30cm), 22 AWG

Mounting Options



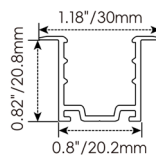
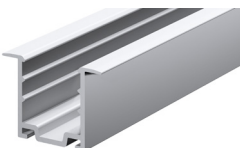
F3DL-SC

Name	Straight surface channel
Material	Aluminum
Standard Length	3.28ft (1M)



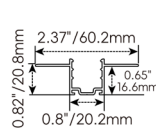
F3DL-BC

Name	Bendable surface channel
Material	Aluminum
Standard Length	3.28ft (1M)
Min. Bending Diameter	23.6in. (600mm)



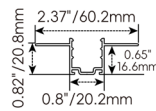
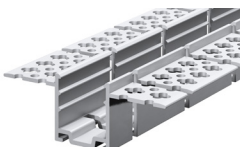
F3DL-RC

Name	Straight recessed channel
Material	Aluminum
Standard Length	3.28ft (1M)



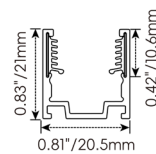
F3DL-MC

Name	Mud-in channel
Material	Aluminum
Standard Length	3.28ft (1M)



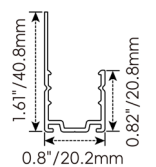
F3DL-BMC

Name	Bendable mud-in channel
Material	Aluminum
Standard Length	3.28ft (1M)
Min. Top Bending Diameter	23.6in. (600mm)
Min. Side Bending Diameter	63in. (1600mm)



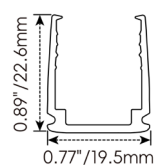
F3DL-SCS

Name	Straight surface channel
Material	Aluminum with silicone groove
Standard Length	3.28ft (1M)



F3DL-LBC

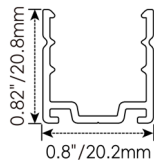
Name	Light-block channel
Material	Aluminum
Standard Length	3.28ft (1M)



F3DL-PC

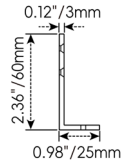
Name	PC channel
Material	Polycarbonate
Standard Length	3.28ft (1M)

Mounting Options



F3DL-CL

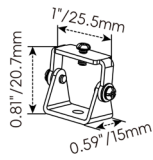
Name	Mounting clip
Material	Aluminum
Standard Length	0.98in. (25mm)



F3DL-LS

Name	L-shaped mounting bracket
Material	Aluminum
Standard Length	0.79in. (20mm)

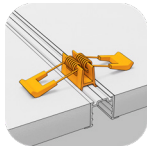
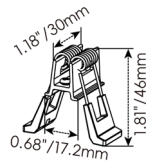
* F3DL-LS must be installed with F3DL-SC



F3DL-AC

Name	Adjustable mounting clip
Material	Stainless steel
Standard Length	1 in. (25.5mm)

* F3DL-AC must be installed with F3DL-SC

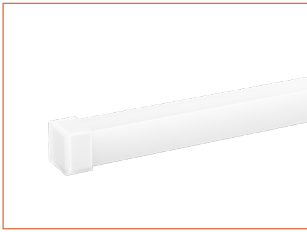


F3DL-RC-SPC

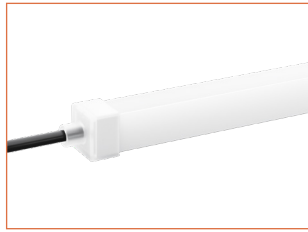
Name	Spring clip
Standard Pkg	1pcs

* F3DL-RC-SPC must be installed with F3DL-RC

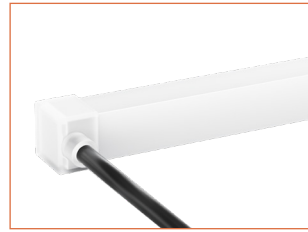
Silicone End Caps (Optional, purchase for extra)



F3DL-SEC-C
Silicone closed end cap



F3DL-SEC-F-5P
Silicone end cap front entry with 0.98ft (30cm) cable, 5 pin



F3DL-SEC-S-5P
Silicone end cap side entry with 0.98ft (30cm) cable, 5 pin



F3DL-SEC-B-5P
Silicone end cap bottom entry with 0.98ft (30cm) cable, 5 pin

Additional Accessories (Optional, purchase for extra)



MCW-5P-67
Male connector, 0.98ft (30cm) white cable, 5 pin, IP67, Wet, 22 AWG



FCW-5P-67
Female connector, 0.98ft (30cm) white cable, 5 pin, IP67, Wet, 22 AWG



MCB-5P-67
Male connector, 0.98ft (30cm) black cable, 5 pin, IP67, Wet, 22 AWG



FCB-5P-67
Female connector, 0.98ft (30cm) black cable, 5 pin, IP67, Wet, 22 AWG



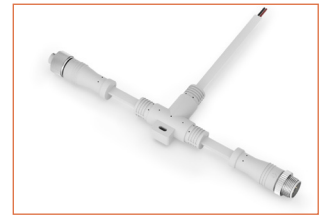
SW-3P-6
Shielded signal wire, standard 20ft (6m), customizable 3 pin, 18AWG



SC-3P-6
XLR3 extension signal connector, standard 20ft (6m), customizable 3 pin



NC-6
RJ45 extension network connector, standard 20ft (6m), customizable



MFTCW-5P-67
Male and female T-shaped connector, white cable, 5 pin, IP67, Wet

FORTE 3D LARGE PIXEL RGBW

Outdoor · 3D Bending · Pixel RGBW

Drivers

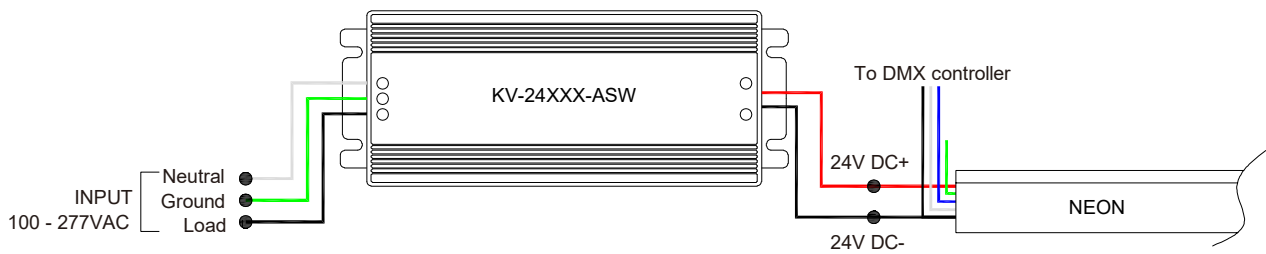
Non-dimmable

Code	Max Load	Input	Output	Class 2	With Junction Box	Environment	Size (L x W x H)
KV-24030-ASW	30W	100-277VAC	24V	Yes	No	Dry/Damp	6.1 x 2.1 x 0.8in. (15.5 x 5.4 x 2cm)
KV-24060-ASW	60W	100-277VAC	24V	Yes	No	Dry/Damp	7 x 2.4 x 0.9in. (17.8 x 6.1 x 2.4cm)
KV-24096-ASW	96W	100-277VAC	24V	Yes	No	Dry/Damp/Wet	9.1 x 2.8 x 1.7in. (23 x 7 x 4.3cm)

Controllers Options

Code	Description
DINA-DR micro	DMX 60 channels, DMX Stand Alone controller with 10 scenes, USB connectivity for programming
SLESA-U9	DMX 256 channels, USB connection, standalone mode with 1 area and 20 scenes
STICK-GA2	DMX 512 channels, ready to use (pre-loaded with 8 scenes and 170 RGB fixtures)
STICK-CW4	DMX 1024 channels, up to 36 scenes stored and directly recalled via 6 touch sensitive buttons

Wiring Diagram



FORTE 3D LARGE PIXEL RGBW

Outdoor · 3D Bending · Pixel RGBW

24V Voltage Drop & Maximum Wire Length Chart

Based on 24V voltage with a 3% voltage drop allowance. Indicates the maximum wire length from the power supply to the start of the run.

Total load	8AWG	10AWG	12AWG	14AWG	16AWG	18AWG	20AWG	22AWG
10W / 0.4A	1588ft (484.0m)	999ft (304.5m)	628ft (191.4m)	395ft (120.4m)	248ft (75.5m)	156ft (47.5m)	98ft (29.8m)	61ft (18.5m)
20W / 0.8A	794ft (242.0m)	499ft (152.1m)	314ft (95.7m)	197ft (60.0m)	124ft (37.8m)	78ft (23.7m)	49ft (14.9m)	30ft (9.1m)
30W / 1.3A	529ft (161.2m)	333ft (101.5m)	209ft (63.7m)	131ft (39.9m)	82ft (24.9m)	52ft (15.8m)	32ft (9.7m)	20ft (6.1m)
40W / 1.7A	397ft (121.0m)	249ft (75.9m)	157ft (47.8m)	98ft (29.8m)	62ft (18.9m)	39ft (11.8m)	24ft (7.3m)	15ft (4.5m)
50W / 2.1A	317ft (96.6m)	199ft (60.6m)	125ft (38.1m)	79ft (24.0m)	49ft (14.9m)	31ft (9.4m)	19ft (5.7m)	12ft (3.6m)
60W / 2.5A	264ft (80.4m)	166ft (50.6m)	104ft (31.7m)	65ft (19.8m)	41ft (12.5m)	26ft (7.9m)	16ft (4.8m)	10ft (3.0m)
70W / 2.9A	226ft (68.8m)	142ft (43.2m)	89ft (27.1m)	56ft (17.0m)	35ft (10.6m)	22ft (6.7m)	14ft (4.2m)	8ft (2.4m)
80W / 3.3A	198ft (60.3m)	124ft (37.8m)	78ft (23.7m)	49ft (14.9m)	31ft (9.4m)	19ft (5.7m)	12ft (3.6m)	7ft (2.1m)
90W / 3.8A	176ft (53.6m)	111ft (33.8m)	69ft (21.0m)	43ft (13.1m)	27ft (8.2m)	17ft (5.1m)	10ft (3.0m)	6ft (1.8m)
100W / 4.2A	158ft (48.1m)	99ft (30.1m)	62ft (18.9m)	39ft (11.8m)	24ft (7.3m)	15ft (4.5m)	9ft (2.7m)	6ft (1.8m)
110W / 4.6A	144ft (43.8m)	90ft (27.4m)	57ft (17.3m)	35ft (10.6m)	22ft (6.7m)	14ft (4.2m)	9ft (2.7m)	5ft (1.5m)
120W / 5.0A	132ft (40.2m)	83ft (25.3m)	52ft (15.8m)	32ft (9.7m)	20ft (6.1m)	13ft (3.9m)	8ft (2.4m)	5ft (1.5m)
130W / 5.4A	122ft (37.1m)	76ft (23.1m)	48ft (14.6m)	30ft (9.1m)	19ft (5.7m)	12ft (3.6m)	7ft (2.1m)	4ft (1.2m)
140W / 5.8A	113ft (34.4m)	71ft (21.6m)	44ft (13.4m)	28ft (8.5m)	17ft (5.1m)	11ft (3.3m)	7ft (2.1m)	4ft (1.2m)
150W / 6.3A	105ft (32.0m)	66ft (20.1m)	41ft (12.5m)	26ft (7.9m)	16ft (4.8m)	10ft (3.0m)	6ft (1.8m)	4ft (1.2m)
160W / 6.7A	99ft (30.1m)	62ft (18.9m)	39ft (11.8m)	24ft (7.3m)	15ft (4.5m)	9ft (2.7m)	6ft (1.8m)	3ft (0.9m)
170W / 7.1A	93ft (28.3m)	58ft (17.6m)	36ft (10.9m)	23ft (7.0m)	14ft (4.2m)	9ft (2.7m)	5ft (1.5m)	3ft (0.9m)
180W / 7.5A	88ft (26.8m)	55ft (16.7m)	34ft (10.3m)	22ft (6.7m)	13ft (3.9m)	8ft (2.4m)	5ft (1.5m)	3ft (0.9m)
190W / 7.9A	83ft (25.3m)	52ft (15.8m)	33ft (10.0m)	20ft (6.0m)	13ft (3.9m)	8ft (2.4m)	5ft (1.5m)	3ft (0.9m)
200W / 8.3A	79ft (24.0m)	49ft (14.9m)	31ft (9.4m)	19ft (5.7m)	12ft (3.6m)	7ft (2.1m)	4ft (1.2m)	3ft (0.9m)
210W / 8.8A	75ft (22.8m)	47ft (14.3m)	29ft (8.8m)	18ft (5.4m)	11ft (3.3m)	7ft (2.1m)	4ft (1.2m)	2ft (0.6m)
220W / 9.2A	72ft (21.9m)	45ft (13.7m)	28ft (8.5m)	18ft (5.4m)	11ft (3.3m)	7ft (2.1m)	4ft (1.2m)	2ft (0.6m)
230W / 9.6A	69ft (21.0m)	43ft (13.1m)	27ft (8.2m)	17ft (5.1m)	10ft (3.0m)	6ft (1.8m)	4ft (1.2m)	2ft (0.6m)
240W / 10.0A	66ft (20.1m)	41ft (12.5m)	26ft (7.9m)	16ft (4.8m)	10ft (3.0m)	6ft (1.8m)	4ft (1.2m)	2ft (0.6m)
250W / 10.4A	63ft (19.2m)	40ft (12.1m)	25ft (7.6m)	15ft (4.5m)	9ft (2.7m)	6ft (1.8m)	3ft (0.9m)	2ft (0.6m)