

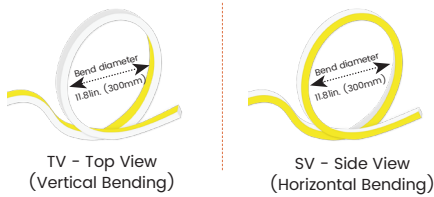
### Features

- Robust & uniform silicone body, elite output performance & durability
- IP68 rated, ideal for outdoor uses, not for underwater project
- 5 years warranty

### Applications

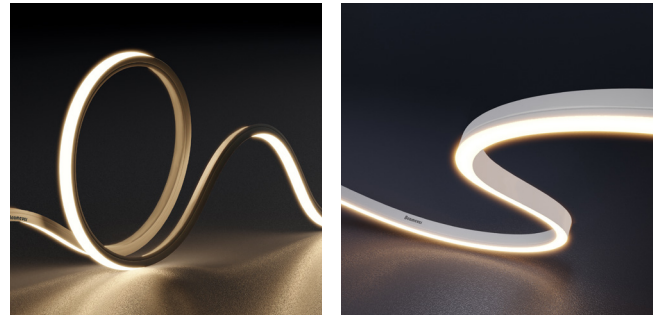
Hotels, facades, gardens, parks, balconies, roofs, soffits, etc.

### Bending Directions & Diameters

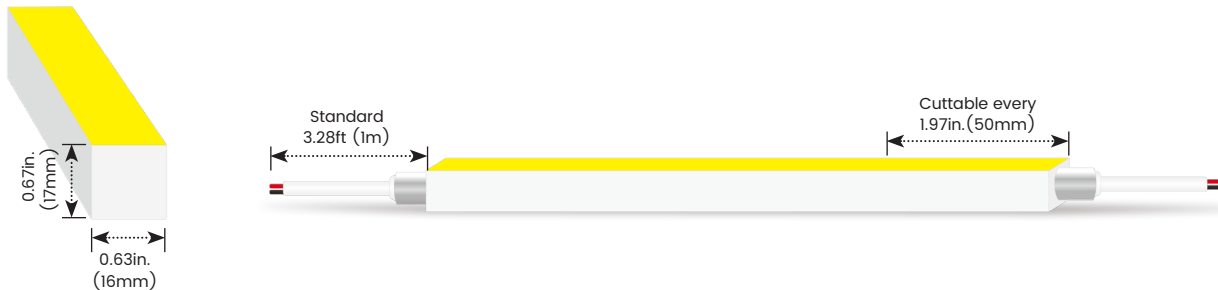


Date \_\_\_\_\_ Fixture type \_\_\_\_\_

Project name \_\_\_\_\_ Project phase \_\_\_\_\_



### Dimensions



### Order Code

Model	Environment	Voltage	CCT	Power	End Cap	Assembly Builder			
LN1617TV	W8-Wet (IP68)	24V-DC24V	22K-2200K	1.5-1.46W/ft	FT Flush Translucent	F	Front	OW	Open wire 3.28ft (1m)
LN1617SV			27K-2700K	2.9-2.93W/ft	FO Flush Opaque	B	Bottom	MC	Male connector with 11.8in. (300mm) cable
			30K-3000K	4.4-4.39W/ft		S	Side	FC	Female connector with 11.8in. (300mm)cable
			35K-3500K			C	Closed	NA	Only for Closed Feed Entry
			40K-4000K						
			53K-5300K						

### Assembly Builder

Right Feed Entry			Length	
F	Front	OW Open wire 3.28ft (1m)	Max. nominal	65.6ft (20m)
B	Bottom	MC Male connector with 11.8in. (300mm) cable	*For 2.93W/ft	
S	Side	FC Female connector with 11.8in. (300mm)cable	Increment	1.97in.(50mm)
C	Closed	NA Only for Closed Feed Entry		

### Mounting Order Code

Product Code
Please select on the Mounting Options page

\*We will list the nearest actual manufacturing length on the quotation, based on your requested length.

# LINIO NEON 1617 Static White

Outdoor · Vertical Bending · Horizontal Bending

## Lumen Output (lm/ft)

CCT	Vertical Bending			Horizontal Bending		
	1.46W/ft	2.93W/ft	4.39W/ft	1.46W/ft	2.93W/ft	4.39W/ft
2200K	104	195	287	85	157	240
2700K	113	211	311	92	170	260
3000K	120	225	332	99	181	277
3500K	126	143	346	101	185	283
4000K	126	234	346	103	189	289
5300K	123	230	339	99	181	278
Max. Run for Class 2*	54.8ft (16.7m)	27.3ft (8.3m)	18.2ft (5.6m)	54.8ft (16.7m)	27.3ft (8.3m)	18.2ft (5.6m)
Max. Run Supported Length	91.8ft (28m)	65.6ft (20m)	49.2ft (15m)	91.8ft (28m)	65.6ft (20m)	49.2ft(15m)

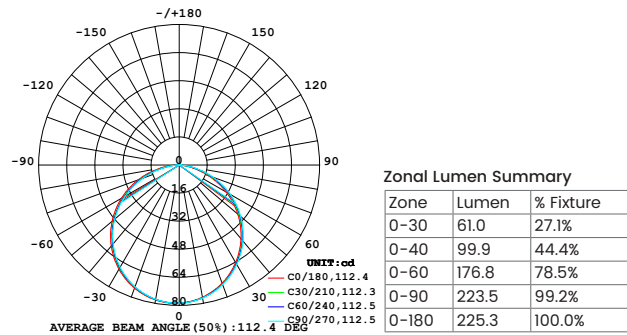
\*Typically installations in USA and Canada comply with Class 2 requirements

## Technical Details

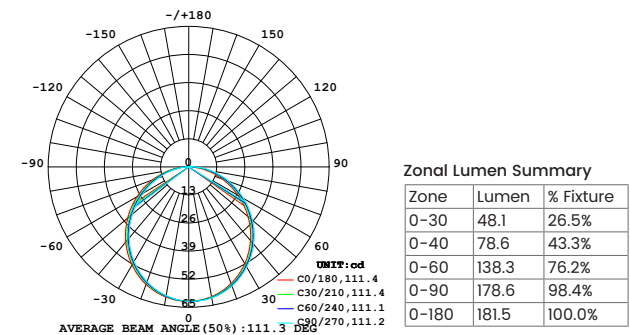
Parameter	Vertical Bending	Horizontal Bending
Efficacy	77lm/W @3000K 2.93W	62lm/W @3000K 2.93W
CRI	Ra>90	Ra>90
Beam Angle	110°	110°
LED MacAdam	2 steps	2 steps
IK Rating	IK10 (with aluminium profile)	IK10 (with aluminium profile)
Average Life (L80B10)	>51,000 hours	>51,000 hours
Storage Temperature	-40°F~-149°F (-40°C~ 65°C)	-40°F~-149°F (-40°C~ 65°C)
Operating Temperature	-40°F~-149°F (-40°C~ 65°C)	-40°F~-149°F (-40°C~ 65°C)

## Photometry

LN1617TV-W8-24V-30K-2.9-FT-F-OW-F-OW  
 LINIO NEON 1617 TV, Vertical bend, 3000K, 2.93W/ft

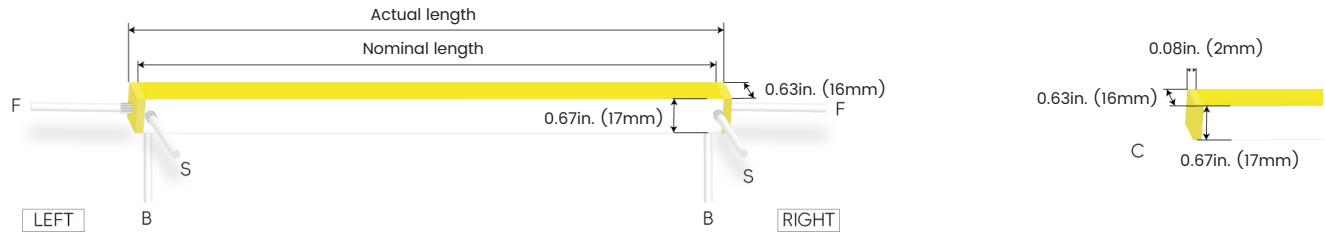


LN1617SV-W8-24V-30K-2.9-FT-F-OW-F-OW  
 LINIO NEON 1617 SV, Horizontal bend, 3000K, 2.93W/ft

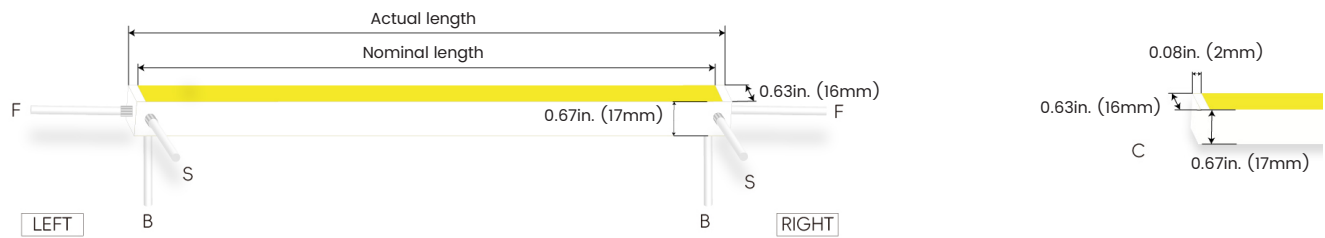


### Feed Entry / End Cap Options

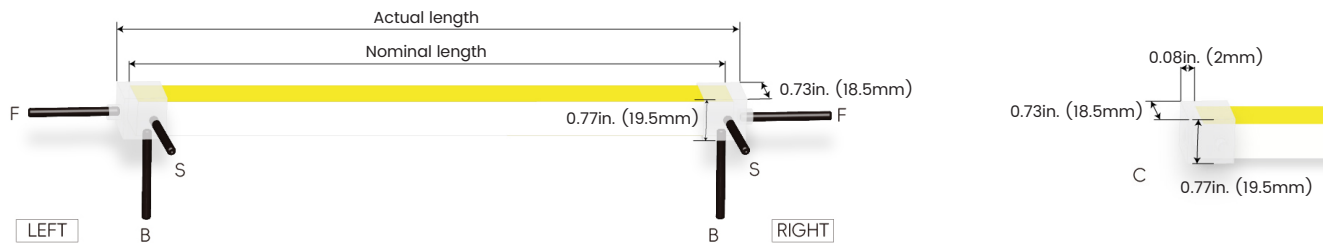
#### FT: Flush Translucent – IP68, factory-made only



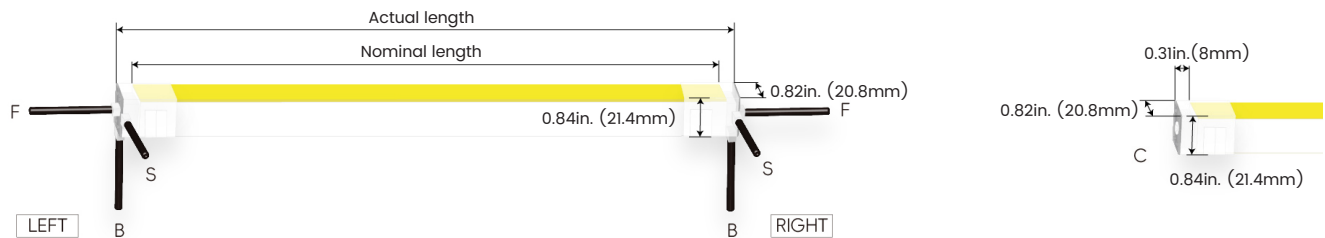
#### FO: Flush Opaque – IP68, factory-made only



#### Silicone end cap – IP67, for field cuttable only



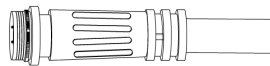
#### Mechanical end cap with screws – IP67, for field cuttable only



### Connector Wire Options



**OW:** Open wire, **Dry only**  
Standard 11.81in. (300mm), 18 AWG,  
wire length customizable

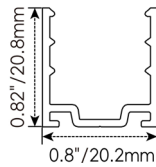
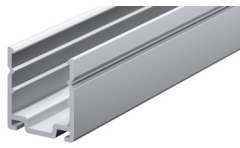


**MC:** Male connector, **Wet**  
Standard 11.81in. (300mm), 18 AWG



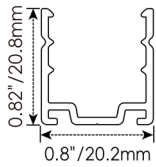
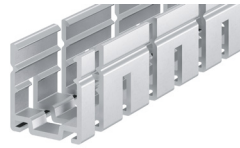
**FC:** Female connector, **Wet**  
Standard 11.81in. (300mm), 18 AWG

**Mounting Options**



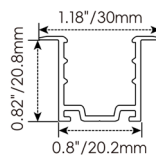
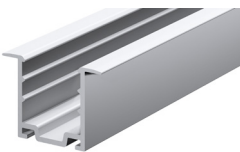
**NF1617-SC**

Name	Straight surface channel
Material	Aluminum
Standard Length	3.28ft (1m)



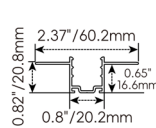
**NF1617-BC**

Name	Bendable surface channel
Material	Aluminum
Standard Length	3.28ft (1m)
Min. Bending Radius	11.8in (300mm)



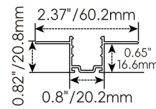
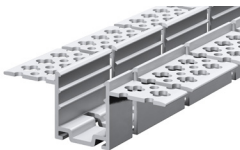
**NF1617-RC**

Name	Straight recessed channel
Material	Aluminum
Standard Length	3.28ft (1m)



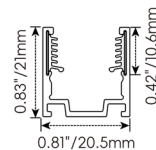
**NF1617-MC**

Name	Mud-in channel
Material	Aluminum
Standard Length	3.28ft (1m)



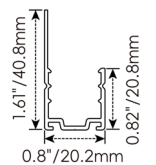
**NF1617-BMC**

Name	Bendable mud-in channel
Material	Aluminum
Standard Length	3.28ft (1m)
Min. Top Bending Radius	11.8in (300mm)
Min. Side Bending Radius	31.5in. (800mm)



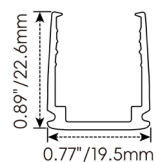
**NF1617-SCS**

Name	Straight surface channel
Material	Aluminum with silicone groove
Standard Length	3.28ft (1m)



**NF1617-LBC**

Name	Light-block channel
Material	Aluminum
Standard Length	3.28ft (1m)



**NF1617-PC**

Name	PC channel
Material	Polycarbonate
Standard Length	3.28ft (1m)

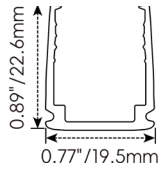
# Beamever

## LINIO NEON 1617 Static White

Designer's Custom Playground

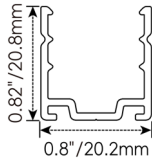
Outdoor · Vertical Bending · Horizontal Bending

### Mounting Options



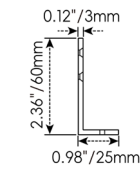
#### NF1617-BPC

Name	Bendable surface channel
Material	Polycarbonate
Standard Length	3.28ft (1m)
Min. Bending Radius	5.91in. (150mm)



#### NF1617-CL

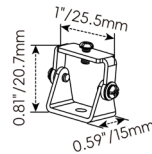
Name	Mounting clip
Material	Aluminum
Standard Length	0.98in. (25mm)



#### NF1617-LS

Name	L-shaped mounting bracket
Material	Aluminum
Standard Length	0.79in. (20mm)

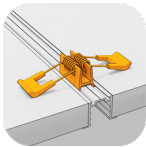
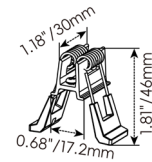
\* NF1617-LS must be installed with NF1617-SC



#### NF1617-AC

Name	Adjustable mounting clip
Material	Stainless steel
Standard Length	1 in. (25.5mm)

\* NF1617-AC must be installed with NF1617-SC

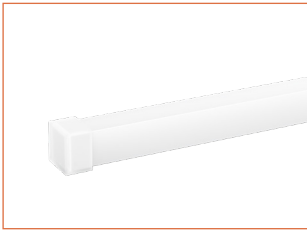


#### NF1617-RC-SPC

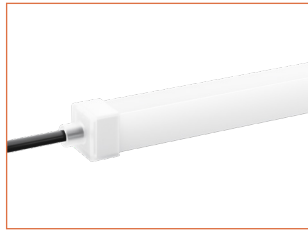
Name	Spring clip
Standard Pkg	1pcs

\* NF1617-RC-SPC must be installed with NF1617-RC

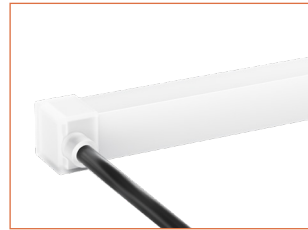
**Silicone End Caps (Optional, purchase for extra )**



**NF1617-SEC-C**  
Silicone closed end cap



**NF1617-SEC-F-2P**  
Silicone end cap front entry with 11.81in. (300mm) cable, 2 pin

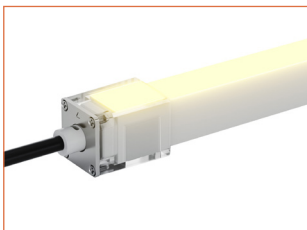


**NF1617-SEC-S-2P**  
Silicone end cap side entry with 11.81in. (300mm) cable, 2 pin

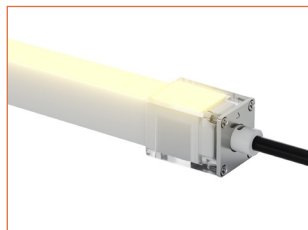


**NF1617-SEC-B-2P**  
Silicone end cap bottom entry with 11.81in. (300mm) cable, 2 pin

**Solderless & Glueless Mechanical End Caps for Vertical Bending(Optional, purchase for extra)**



**NF1617T-MEC-LF-2P**  
Mechanical end cap with screws, left front entry, 11.81in. (300mm) cable, 2 pin, IP67



**NF1617T-MEC-RF-2P**  
Mechanical end cap with screws, right front entry, 11.81in. (300mm) cable, 2 pin, IP67



**NF1617T-MEC-LS-2P**  
Mechanical end cap with screws, left side entry, 11.81in. (300mm) cable, 2 pin, IP67



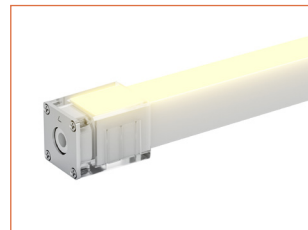
**NF1617T-MEC-RS-2P**  
Mechanical end cap with screws, right side entry, 11.81in. (300mm) cable, 2 pin, IP67



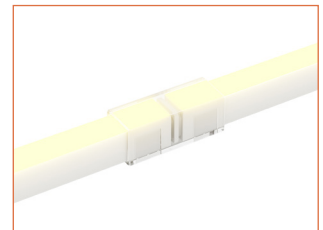
**NF1617T-MEC-LB-2P**  
Mechanical end cap with screws, left bottom entry, 11.81in. (300mm) cable, 2 pin, IP67



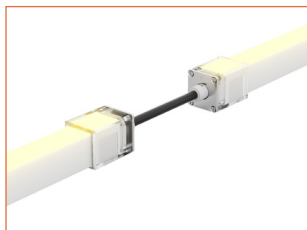
**NF1617T-MEC-RB-2P**  
Mechanical end cap with screws, right bottom entry, 11.81in. (300mm) cable, 2 pin, IP67



**NF1617T-MEC-C**  
Mechanical closed end cap with screws, IP67



**NF1617T-S-S-2P**  
Strip to strip connector, 2 pin, IP54



**NF1617T-JC-F-2P**  
Jumper connector front entry, 5.9in. (150mm) cable, 2 pin, IP67

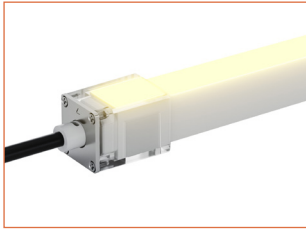


**NF1617T-JC-S-2P**  
Jumper connector side entry, 5.9in. (150mm) cable, 2 pin, IP67

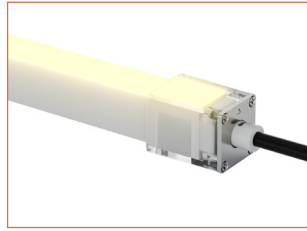


**NF1617T-JC-B-2P**  
Jumper connector bottom entry, 5.9in. (150mm) cable, 2 pin, IP67

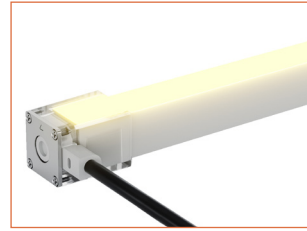
**Solderless & Glueless Mechanical End Caps for Horizontal Bending(Optional, purchase for extra)**



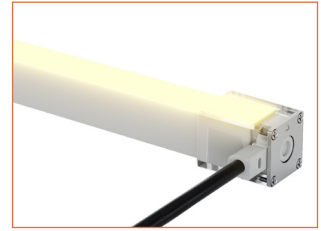
**NF1617S-MEC-LF-2P**  
Mechanical end cap with screws, left front entry, 11.8lin. (300mm) cable, 2 pin, IP67



**NF1617S-MEC-RF-2P**  
Mechanical end cap with screws, right front entry, 11.8lin. (300mm) cable, 2 pin, IP67



**NF1617S-MEC-LS-2P**  
Mechanical end cap with screws, left side entry, 11.8lin. (300mm) cable, 2 pin, IP67



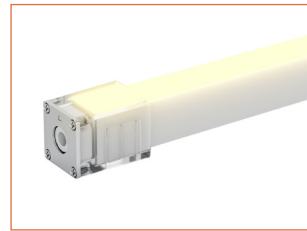
**NF1617S-MEC-RS-2P**  
Mechanical end cap with screws, right side entry, 11.8lin. (300mm) cable, 2 pin, IP67



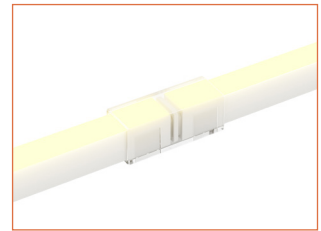
**NF1617S-MEC-LB-2P**  
Mechanical end cap with screws, left bottom entry, 11.8lin. (300mm) cable, 2 pin, IP67



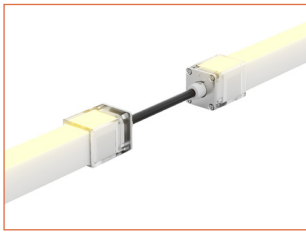
**NF1617S-MEC-RB-2P**  
Mechanical end cap with screws, right bottom entry, 11.8lin. (300mm) cable, 2 pin, IP67



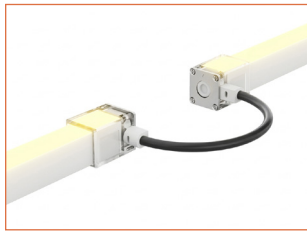
**NF1617S-MEC-C**  
Mechanical closed end cap with screws, IP67



**NF1617S-S-S-2P**  
Strip to strip connector, 2 pin, IP54



**NF1617S-JC-F-2P**  
Jumper connector front entry, 5.9in. (150mm) cable, 2 pin, IP67



**NF1617S-JC-S-2P**  
Jumper connector side entry, 5.9in. (150mm) cable, 2 pin, IP67



**NF1617S-JC-B-2P**  
Jumper connector bottom entry, 5.9in. (150mm) cable, 2 pin, IP67

**Additional Accessories (Optional, purchase for extra)**



**MCW-2P-67**  
Male connector, 11.8lin. (300mm) white cable, 2 pin, IP67, Wet, 18 AWG



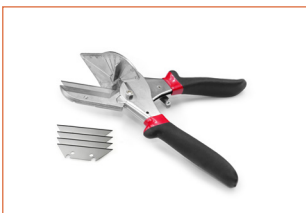
**FCW-2P-67**  
Female connector, 11.8lin. (300mm) white cable, 2 pin, IP67, Wet, 18 AWG



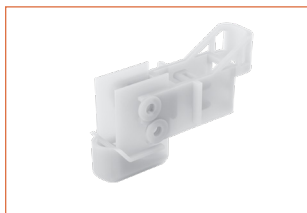
**MCB-2P-67**  
Male connector, 11.8lin. (300mm) black cable, 2 pin, IP67, Wet, 18 AWG



**FCB-2P-67**  
Female connector, 11.8lin. (300mm) black cable, 2 pin, IP67, Wet, 18 AWG



**ADJS**  
1 Adjustable Angle Scissors Set, with 4 Spare Blades



**NF1617-IT**  
Installation tool for NF1617-BPC

**LINIO NEON 1617 Static White**

Outdoor · Vertical Bending · Horizontal Bending

**Drivers**

**Non-dimmable**

Code	Max Load	Input	Output	Class 2	With Junction Box	Environment	Size (L x W x H)
KV-24030-ASW	30W	100-277VAC	24V	Yes	No	Dry/Damp	6.1 x 2.1 x 0.8in. (155 x 54 x 20mm)
KV-24060-ASW	60W	100-277VAC	24V	Yes	No	Dry/Damp	7 x 2.4 x 0.9in. (178 x 61 x 24mm)
KV-24096-ASW	96W	100-277VAC	24V	Yes	No	Dry/Damp/Wet	9.1 x 2.8 x 1.7in. (230 x 70 x 43mm)

**Phase cut/Triac-dimmable**

Code	Max Load	Input	Output	Class 2	With Junction Box	Environment	Size (L x W x H)
KVF-24030-TDW	30W	100-277VAC	24V	Yes	No	Dry/Damp	6.1 x 2.1 x 0.8in. (155 x 54 x 20mm)
KVF-24060-TDW	60W	100-277VAC	24V	Yes	No	Dry/Damp	7 x 2.4 x 0.9in. (178 x 61 x 24mm)
KVF-24096-TDW	96W	100-277VAC	24V	Yes	No	Dry/Damp/Wet	9.1 x 2.8 x 1.7in. (230 x 70 x 43mm)
KVF-24030-TDWJ	30W	100-277VAC	24V	Yes	Yes	Dry/Damp	6.5 x 3.6 x 1in. (165 x 92 x 26mm)
KVF-24060-TDWJ	60W	100-277VAC	24V	Yes	Yes	Dry/Damp	7.4 x 3.6 x 1in. (188 x 92 x 26mm)
KVF-24096-TDWJ	96W	100-277VAC	24V	Yes	Yes	Dry/Damp	8.7 x 3.7 x 1.6in. (220 x 93 x 41mm)
KVF-24192-TDWJ	192W (96Wx2)	100-277VAC	24V	Yes	Yes	Dry/Damp	10.9 x 4.3 x 1.8in. (278 x 110 x 45mm)
KVF-24288-TDWJ	288W (96Wx3)	100-277VAC	24V	Yes	Yes	Dry/Damp	11.9 x 4.3 x 1.8in. (301 x 110 x 45mm)
KVF-24384-TDWJ	384W (96Wx4)	100-277VAC	24V	Yes	Yes	Dry/Damp	12.7 x 5.5 x 1.9in. (323 x 140 x 48mm)

**4 in 1-dimmable (0-10V/1-10V/Potentiometer/10V PWM)**

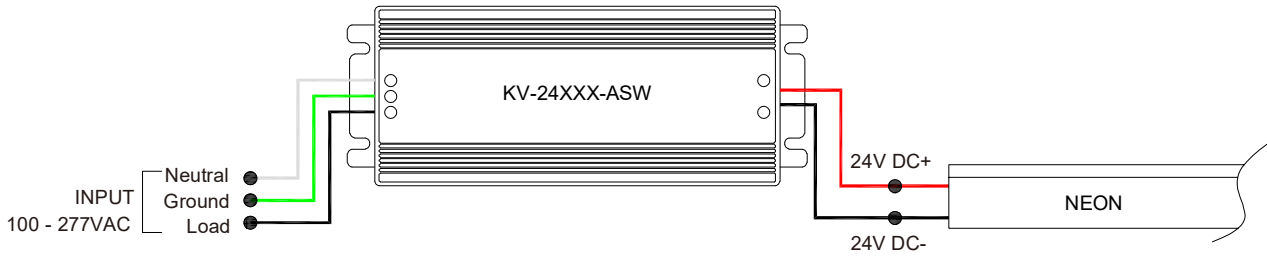
Code	Max Load	Input	Output	Class 2	With Junction Box	Environment	Size (L x W x H)
KVD-24030-DIM	30W	100-277VAC	24V	Yes	No	Dry/Damp	6.1 x 2.1 x 0.8in. (155 x 54 x 20mm)
KVD-24060-DIM	60W	100-277VAC	24V	Yes	No	Dry/Damp	7 x 2.4 x 0.9in. (178 x 61 x 24mm)
KVD-24096-DIM	96W	100-277VAC	24V	Yes	No	Dry/Damp/Wet	9.1 x 2.8 x 1.7in. (230 x 70 x 43mm)
KVD-24030-DIMJ	30W	100-277VAC	24V	Yes	Yes	Dry/Damp	6.5 x 3.6 x 1in. (165 x 92 x 26mm)
KVD-24060-DIMJ	60W	100-277VAC	24V	Yes	Yes	Dry/Damp	7.4 x 3.6 x 1in. (188 x 92 x 26mm)
KVD-24096-DIMJ	96W	100-277VAC	24V	Yes	Yes	Dry/Damp	8.7 x 3.7 x 1.6in. (220 x 93 x 41mm)
KVD-24192-DIMJ	192W (96Wx2)	100-277VAC	24V	Yes	Yes	Dry/Damp	10.9 x 4.3 x 1.8in. (278 x 110 x 45mm)
KVD-24288-DIMJ	288W (96Wx3)	100-277VAC	24V	Yes	Yes	Dry/Damp	11.9 x 4.3 x 1.8in. (301 x 110 x 45mm)
KVD-24384-DIMJ	384W (96Wx4)	100-277VAC	24V	Yes	Yes	Dry/Damp	12.7 x 5.5 x 1.9in. (323 x 140 x 48mm)

**5 in 1-dimmable (Triac/0-10V/1-10V/Potentiometer/10V PWM)**

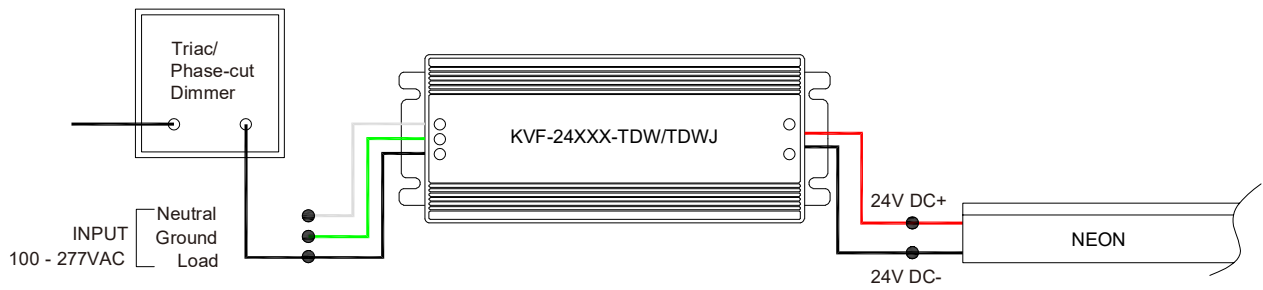
Code	Max Load	Input	Output	Class 2	With Junction Box	Environment	Size (L x W x H)
KVG-24030-DW	30W	100-277VAC	24V	Yes	No	Dry/Damp	6.1 x 2.1 x 0.8in. (155 x 54 x 20mm)
KVG-24060-DW	60W	100-277VAC	24V	Yes	No	Dry/Damp	7 x 2.4 x 0.9in. (178 x 61 x 24mm)
KVG-24096-DW	96W	100-277VAC	24V	Yes	No	Dry/Damp/Wet	9.1 x 2.8 x 1.7in. (230 x 70 x 43mm)
KVG-24030-DWJ	30W	100-277VAC	24V	Yes	Yes	Dry/Damp	6.5 x 3.7 x 1.6in. (165 x 95 x 40mm)
KVG-24060-DWJ	60W	100-277VAC	24V	Yes	Yes	Dry/Damp	7.4 x 3.7 x 1.6in. (188 x 95 x 40mm)
KVG-24096-DWJ	96W	100-277VAC	24V	Yes	Yes	Dry/Damp	8.7 x 3.7 x 1.6in. (220 x 95 x 40mm)
KVG-C24192-DWJ	192W (96Wx2)	100-277VAC	24V	Yes	Yes	Dry/Damp	10.9 x 4.3 x 1.8in. (278 x 110 x 45mm)
KVG-C24288-DWJ	288W (96Wx3)	100-277VAC	24V	Yes	Yes	Dry/Damp	11.9 x 4.3 x 1.8in. (301 x 110 x 45mm)
KVG-C24384-DWJ	384W (96Wx4)	100-277VAC	24V	Yes	Yes	Dry/Damp	12.8 x 5.5 x 1.9in. (325 x 140 x 48mm)

**Wiring Diagram**

**Non-dimmable**



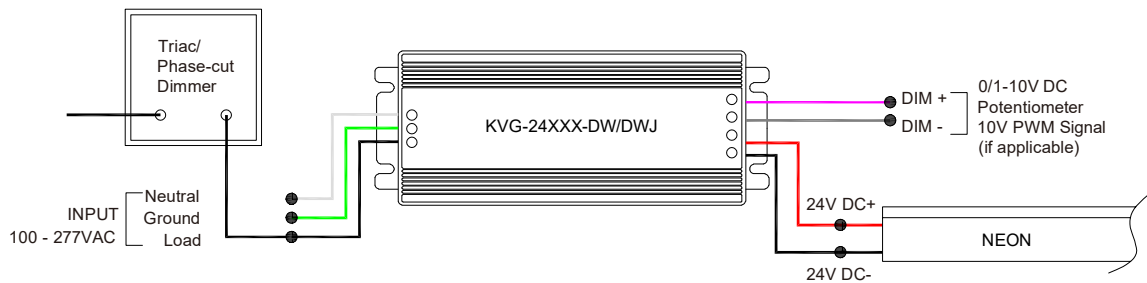
**Phase cut/Triac-dimmable**



**4 in 1-dimmable (0-10V/1-10V/Potentiometer/10V PWM)**



**5 in 1-dimmable (Triac/0-10V/1-10V/Potentiometer/10V PWM)**



**LINIO NEON 1617 Static White**

Outdoor · Vertical Bending · Horizontal Bending

**24V Voltage Drop & Maximum Wire Length Chart**

Based on 24V voltage with a 3% voltage drop allowance. Indicates the maximum wire length from the power supply to the start of the run.

Total load	8AWG	10AWG	12AWG	14AWG	16AWG	18AWG	20AWG	22AWG
10W / 0.4A	1588ft (484.0m)	999ft (304.5m)	628ft (191.4m)	395ft (120.4m)	248ft (75.5m)	156ft (47.5m)	98ft (29.8m)	61ft (18.5m)
20W / 0.8A	794ft (242.0m)	499ft (152.1m)	314ft (95.7m)	197ft (60.0m)	124ft (37.8m)	78ft (23.7m)	49ft (14.9m)	30ft (9.1m)
30W / 1.3A	529ft (161.2m)	333ft (101.5m)	209ft (63.7m)	131ft (39.9m)	82ft (24.9m)	52ft (15.8m)	32ft (9.7m)	20ft (6.1m)
40W / 1.7A	397ft (121.0m)	249ft (75.9m)	157ft (47.8m)	98ft (29.8m)	62ft (18.9m)	39ft (11.8m)	24ft (7.3m)	15ft (4.5m)
50W / 2.1A	317ft (96.6m)	199ft (60.6m)	125ft (38.1m)	79ft (24.0m)	49ft (14.9m)	31ft (9.4m)	19ft (5.7m)	12ft (3.6m)
60W / 2.5A	264ft (80.4m)	166ft (50.6m)	104ft (31.7m)	65ft (19.8m)	41ft (12.5m)	26ft (7.9m)	16ft (4.8m)	10ft (3.0m)
70W / 2.9A	226ft (68.8m)	142ft (43.2m)	89ft (27.1m)	56ft (17.0m)	35ft (10.6m)	22ft (6.7m)	14ft (4.2m)	8ft (2.4m)
80W / 3.3A	198ft (60.3m)	124ft (37.8m)	78ft (23.7m)	49ft (14.9m)	31ft (9.4m)	19ft (5.7m)	12ft (3.6m)	7ft (2.1m)
90W / 3.8A	176ft (53.6m)	111ft (33.8m)	69ft (21.0m)	43ft (13.1m)	27ft (8.2m)	17ft (5.1m)	10ft (3.0m)	6ft (1.8m)
100W / 4.2A	158ft (48.1m)	99ft (30.1m)	62ft (18.9m)	39ft (11.8m)	24ft (7.3m)	15ft (4.5m)	9ft (2.7m)	6ft (1.8m)
110W / 4.6A	144ft (43.8m)	90ft (27.4m)	57ft (17.3m)	35ft (10.6m)	22ft (6.7m)	14ft (4.2m)	9ft (2.7m)	5ft (1.5m)
120W / 5.0A	132ft (40.2m)	83ft (25.3m)	52ft (15.8m)	32ft (9.7m)	20ft (6.1m)	13ft (3.9m)	8ft (2.4m)	5ft (1.5m)
130W / 5.4A	122ft (37.1m)	76ft (23.1m)	48ft (14.6m)	30ft (9.1m)	19ft (5.7m)	12ft (3.6m)	7ft (2.1m)	4ft (1.2m)
140W / 5.8A	113ft (34.4m)	71ft (21.6m)	44ft (13.4m)	28ft (8.5m)	17ft (5.1m)	11ft (3.3m)	7ft (2.1m)	4ft (1.2m)
150W / 6.3A	105ft (32.0m)	66ft (20.1m)	41ft (12.5m)	26ft (7.9m)	16ft (4.8m)	10ft (3.0m)	6ft (1.8m)	4ft (1.2m)
160W / 6.7A	99ft (30.1m)	62ft (18.9m)	39ft (11.8m)	24ft (7.3m)	15ft (4.5m)	9ft (2.7m)	6ft (1.8m)	3ft (0.9m)
170W / 7.1A	93ft (28.3m)	58ft (17.6m)	36ft (10.9m)	23ft (7.0m)	14ft (4.2m)	9ft (2.7m)	5ft (1.5m)	3ft (0.9m)
180W / 7.5A	88ft (26.8m)	55ft (16.7m)	34ft (10.3m)	22ft (6.7m)	13ft (3.9m)	8ft (2.4m)	5ft (1.5m)	3ft (0.9m)
190W / 7.9A	83ft (25.3m)	52ft (15.8m)	33ft (10.0m)	20ft (6.0m)	13ft (3.9m)	8ft (2.4m)	5ft (1.5m)	3ft (0.9m)
200W / 8.3A	79ft (24.0m)	49ft (14.9m)	31ft (9.4m)	19ft (5.7m)	12ft (3.6m)	7ft (2.1m)	4ft (1.2m)	3ft (0.9m)
210W / 8.8A	75ft (22.8m)	47ft (14.3m)	29ft (8.8m)	18ft (5.4m)	11ft (3.3m)	7ft (2.1m)	4ft (1.2m)	2ft (0.6m)
220W / 9.2A	72ft (21.9m)	45ft (13.7m)	28ft (8.5m)	18ft (5.4m)	11ft (3.3m)	7ft (2.1m)	4ft (1.2m)	2ft (0.6m)
230W / 9.6A	69ft (21.0m)	43ft (13.1m)	27ft (8.2m)	17ft (5.1m)	10ft (3.0m)	6ft (1.8m)	4ft (1.2m)	2ft (0.6m)
240W / 10.0A	66ft (20.1m)	41ft (12.5m)	26ft (7.9m)	16ft (4.8m)	10ft (3.0m)	6ft (1.8m)	4ft (1.2m)	2ft (0.6m)
250W / 10.4A	63ft (19.2m)	40ft (12.1m)	25ft (7.6m)	15ft (4.5m)	9ft (2.7m)	6ft (1.8m)	3ft (0.9m)	2ft (0.6m)