

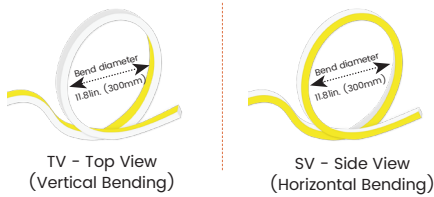
Features

- Premium silicone (heat/UV/solvent-resistant), up to 102 lm/W.
- IP68 rated, ideal for outdoor uses, not for underwater project
- 5 years warranty

Applications

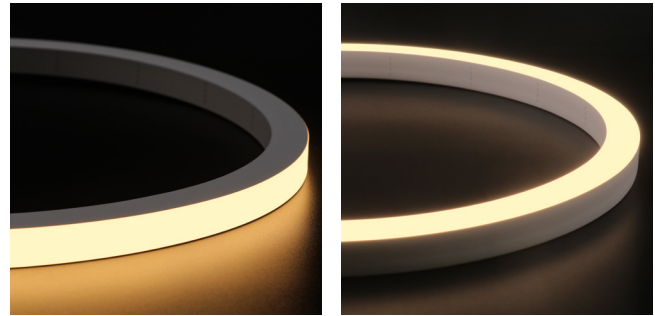
Hotels, apartments, lobbies, malls, facades, parks & soffits, etc.

Bending Directions & Diameters

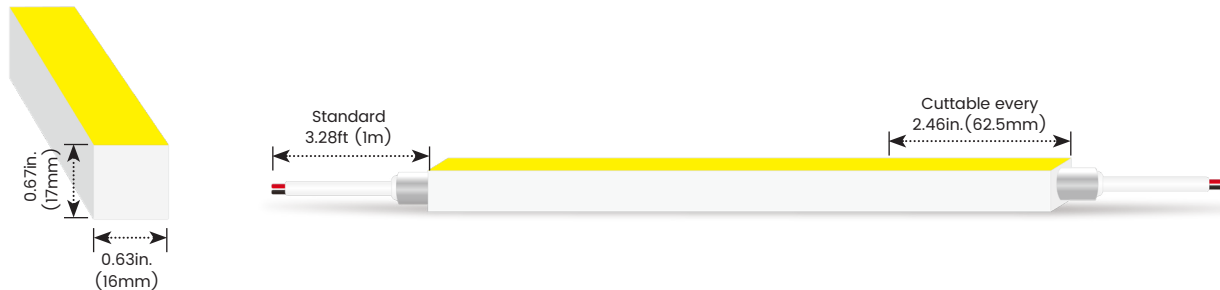


Date _____ Fixture type _____

Project name _____ Project phase _____



Dimensions



Order Code

Assembly Builder

Model	Environment	Voltage	CCT	Power	End Cap	Left Feed Entry	
LN1617TVHE	W8-Wet (IP68)	24V-DC24V	22K-2200K	2.9-2.93W/ft	FT Flush Translucent	F Front	OW Open wire 3.28ft (1m)
LN1617SVHE			27K-2700K	4.6-4.57W/ft	FO Flush Opaque	B Bottom	MC Male connector with 11.8in. (300mm) cable
			30K-3000K			S Side	FC Female connector with 11.8in. (300mm) cable
			35K-3500K			C Closed	NA Only for Closed Feed Entry
			40K-4000K				
			57K-5700K				

Assembly Builder

Mounting Order Code

Right Feed Entry		Length	
F Front	OW Open wire 3.28ft (1m)	Max. nominal	32.8ft (10m)
B Bottom	MC Male connector with 11.8in. (300mm) cable	Increment	2.46in. (62.5mm)
S Side	FC Female connector with 11.8in. (300mm) cable		
C Closed	NA Only for Closed Feed Entry		

Product Code _____

Please select on the Mounting Options page

*We will list the nearest actual manufacturing length on the quotation, based on your requested length.

LINIO NEON 1617 HE

Outdoor · Vertical Bending · Horizontal Bending

Lumen Output (lm/ft)

CCT	Vertical Bending		Horizontal Bending	
	2.93W/ft	4.57W/ft	2.93W/ft	4.57W/ft
2200K	240	372	190	290
2700K	272	417	215	325
3000K	299	456	233	358
3500K	301	458	232	356
4000K	308	471	242	370
5700K	293	450	231	351
Max. Run for Class 2*	27.3ft (8.3m)	16.4ft (5m)	27.3ft (8.3m)	16.4ft (5m)
Max. Run Supported Length	32.8ft (10m)	16.4ft (5m)	32.8ft (10m)	16.4ft (5m)

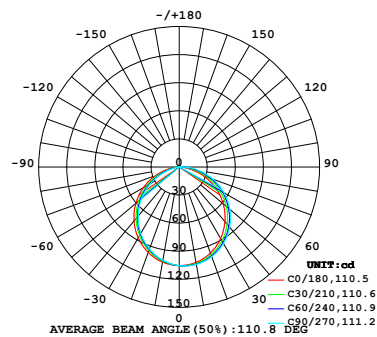
*Typically installations in USA and Canada comply with Class 2 requirements

Technical Details

Parameter	Vertical Bending	Horizontal Bending
Efficacy	102lm/W @3000K 2.93W	80lm/W @3000K 2.93W
CRI	Ra>90	Ra>90
Beam Angle	110°	110°
LED MacAdam	2 steps	2 steps
Average Life (L80B10)	>51,000 hours	>51,000 hours
Storage Temperature	-40°F~149°F (-40°C~ 65°C)	-40°F~149°F (-40°C~ 65°C)
Operating Temperature	-40°F~149°F (-40°C~ 65°C)	-40°F~149°F (-40°C~ 65°C)

Photometry

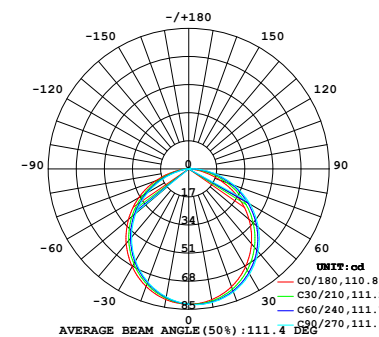
LNI617TVHE-W8-24V-30K-2.9-FT-F-OW-F-OW
 LINIO NEON 1617 TV HE, Vertical bend, 3000K, 2.93W/ft



Zonal Lumen Summary

Zone	Lumen	% Fixture
0-30	81.35	27.10%
0-40	132.8	44.3%
0-60	233.6	78.0%
0-90	296.2	98.9%
0-180	299.6	100.0%

LNI617SVHE-W8-24V-30K-2.9-FT-F-OW-F-OW
 LINIO NEON 1617 SV HE, Horizontal bend, 3000K, 2.93W/ft

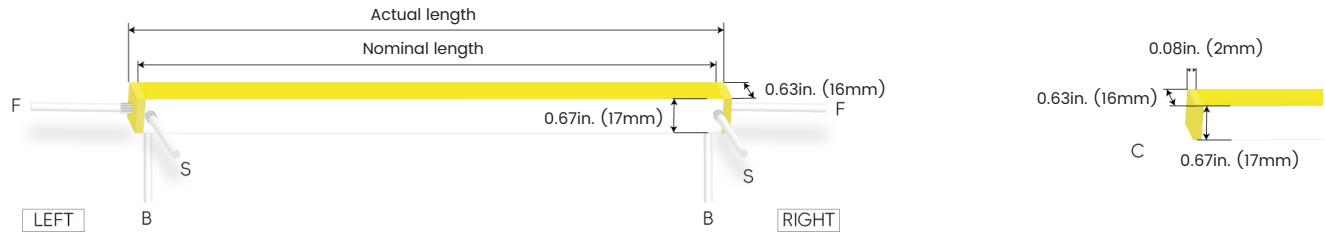


Zonal Lumen Summary

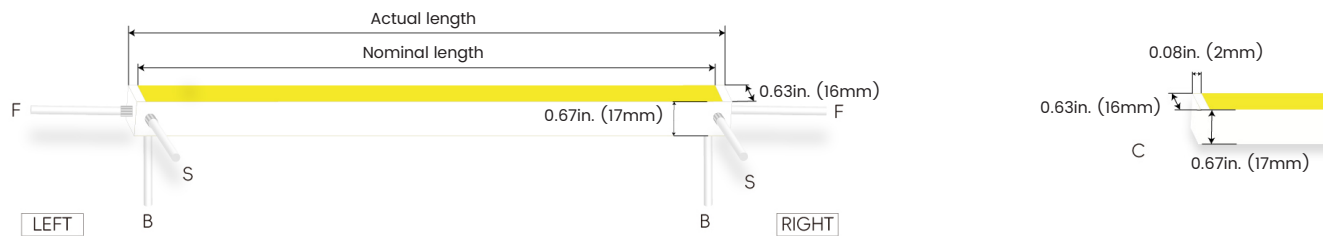
Zone	Lumen	% Fixture
0-30	63.32	27.10%
0-40	103.5	44.3%
0-60	182.4	78.1%
0-90	231.2	98.9%
0-180	233.7	100.0%

Feed Entry / End Cap Options

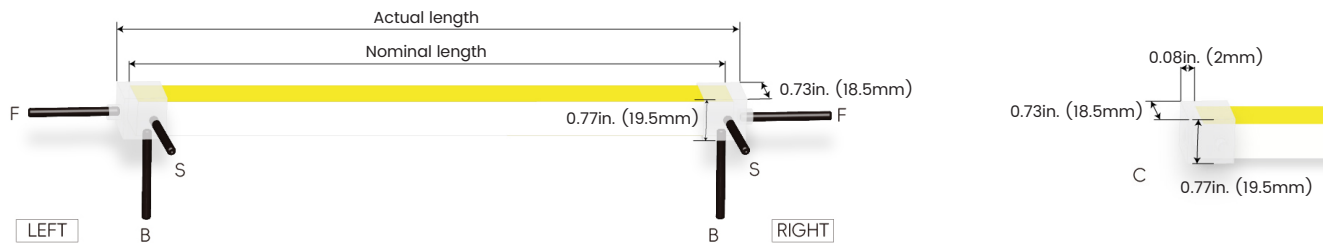
FT: Flush Translucent – IP68, factory-made only



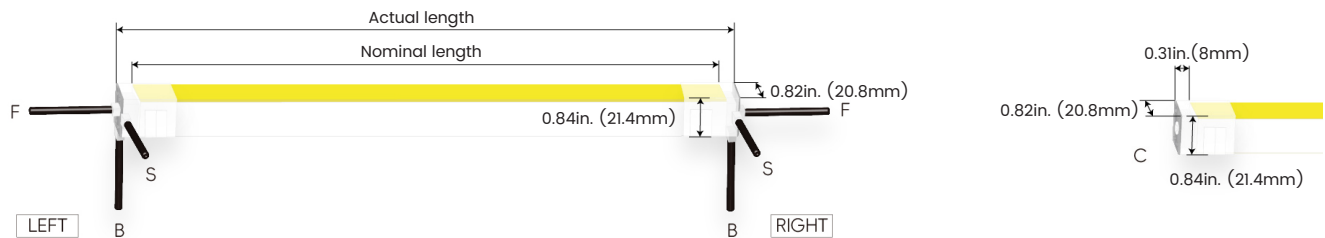
FO: Flush Opaque – IP68, factory-made only



Silicone end cap – IP67, for field cuttable only



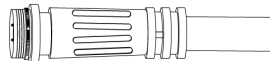
Mechanical end cap with screws – IP67, for field cuttable only



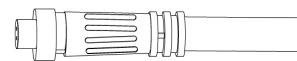
Connector Wire Options



OW: Open wire, **Dry only**
Standard 11.8in. (300mm), 18 AWG,
wire length customizable

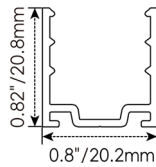
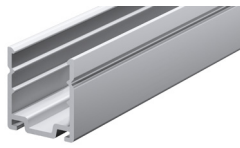


MC: Male connector, **Wet**
Standard 11.8in. (300mm), 18 AWG



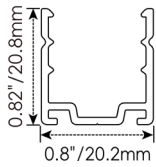
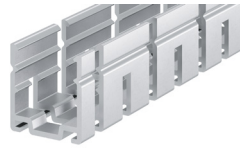
FC: Female connector, **Wet**
Standard 11.8in. (300mm), 18 AWG

Mounting Options



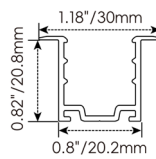
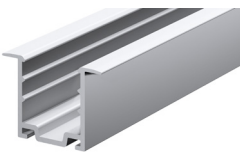
NF1617-SC

Name	Straight surface channel
Material	Aluminum
Standard Length	3.28ft (1m)



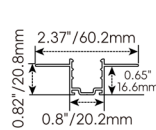
NF1617-BC

Name	Bendable surface channel
Material	Aluminum
Standard Length	3.28ft (1m)
Min. Bending Radius	11.8in (300mm)



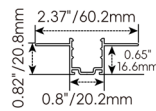
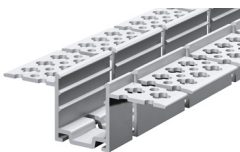
NF1617-RC

Name	Straight recessed channel
Material	Aluminum
Standard Length	3.28ft (1m)



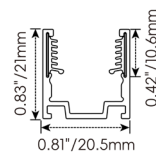
NF1617-MC

Name	Mud-in channel
Material	Aluminum
Standard Length	3.28ft (1m)



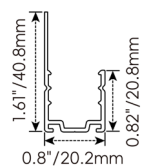
NF1617-BMC

Name	Bendable mud-in channel
Material	Aluminum
Standard Length	3.28ft (1m)
Min. Top Bending Radius	11.8in (300mm)
Min. Side Bending Radius	31.5in. (800mm)



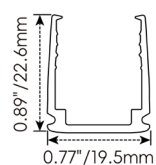
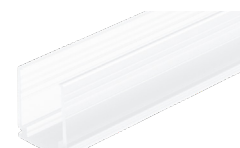
NF1617-SCS

Name	Straight surface channel
Material	Aluminum with silicone groove
Standard Length	3.28ft (1m)



NF1617-LBC

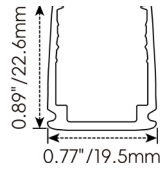
Name	Light-block channel
Material	Aluminum
Standard Length	3.28ft (1m)



NF1617-PC

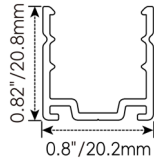
Name	PC channel
Material	Polycarbonate
Standard Length	3.28ft (1m)

Mounting Options



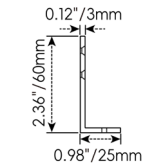
NF1617-BPC

Name	Bendable surface channel
Material	Polycarbonate
Standard Length	3.28ft (1m)
Min. Bending Radius	5.91in. (150mm)



NF1617-CL

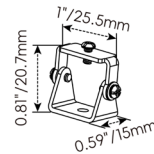
Name	Mounting clip
Material	Aluminum
Standard Length	0.98in. (25mm)



NF1617-LS

Name	L-shaped mounting bracket
Material	Aluminum
Standard Length	0.79in. (20mm)

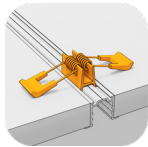
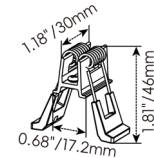
* NF1617-LS must be installed with NF1617-SC



NF1617-AC

Name	Adjustable mounting clip
Material	Stainless steel
Standard Length	1 in. (25.5mm)

* NF1617-AC must be installed with NF1617-SC

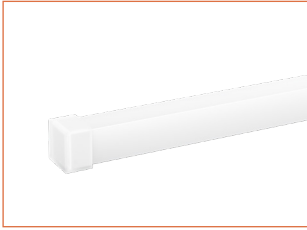


NF1617-RC-SPC

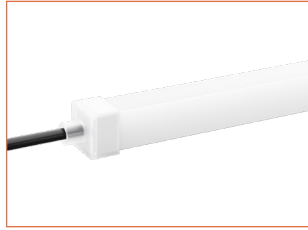
Name	Spring clip
Standard Pkg	1pcs

* NF1617-RC-SPC must be installed with NF1617-RC

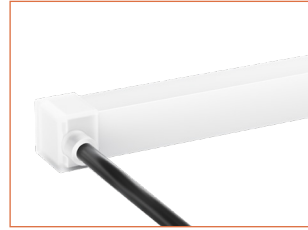
Silicone End Caps (Optional, purchase for extra)



NF1617-SEC-C
Silicone closed end cap



NF1617-SEC-F-2P
Silicone end cap front entry with 11.81in. (300mm) cable, 2 pin

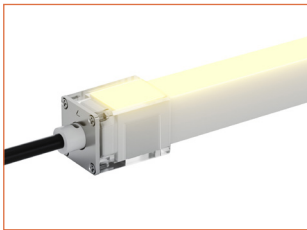


NF1617-SEC-S-2P
Silicone end cap side entry with 11.81in. (300mm) cable, 2 pin

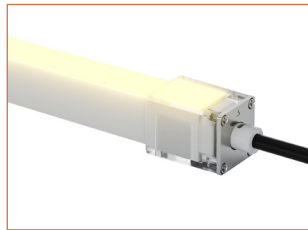


NF1617-SEC-B-2P
Silicone end cap bottom entry with 11.81in. (300mm) cable, 2 pin

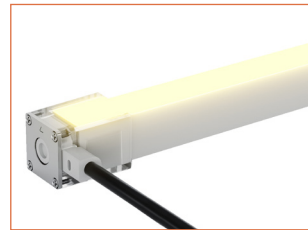
Solderless & Glueless Mechanical End Caps for Vertical Bending(Optional, purchase for extra)



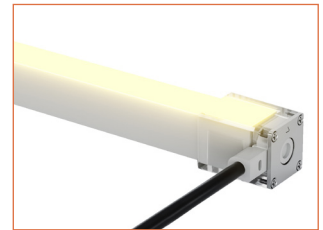
NF1617T-MEC-LF-2P
Mechanical end cap with screws, left front entry, 11.81in. (300mm) cable, 2 pin, IP67



NF1617T-MEC-RF-2P
Mechanical end cap with screws, right front entry, 11.81in. (300mm) cable, 2 pin, IP67



NF1617T-MEC-LS-2P
Mechanical end cap with screws, left side entry, 11.81in. (300mm) cable, 2 pin, IP67



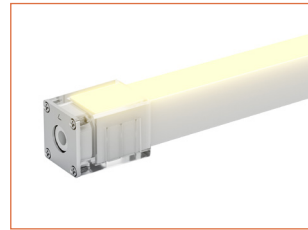
NF1617T-MEC-RS-2P
Mechanical end cap with screws, right side entry, 11.81in. (300mm) cable, 2 pin, IP67



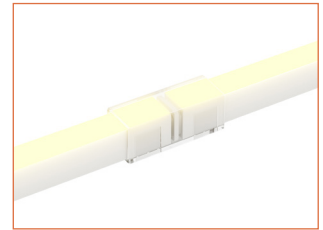
NF1617T-MEC-LB-2P
Mechanical end cap with screws, left bottom entry, 11.81in. (300mm) cable, 2 pin, IP67



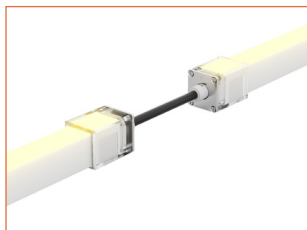
NF1617T-MEC-RB-2P
Mechanical end cap with screws, right bottom entry, 11.81in. (300mm) cable, 2 pin, IP67



NF1617T-MEC-C
Mechanical closed end cap with screws, IP67



NF1617T-S-S-2P
Strip to strip connector, 2 pin, IP54



NF1617T-JC-F-2P
Jumper connector front entry, 5.9in. (150mm) cable, 2 pin, IP67

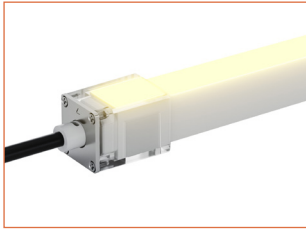


NF1617T-JC-S-2P
Jumper connector side entry, 5.9in. (150mm) cable, 2 pin, IP67

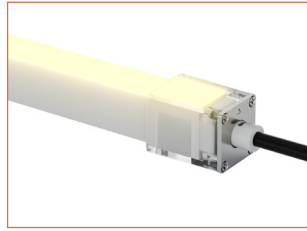


NF1617T-JC-B-2P
Jumper connector bottom entry, 5.9in. (150mm) cable, 2 pin, IP67

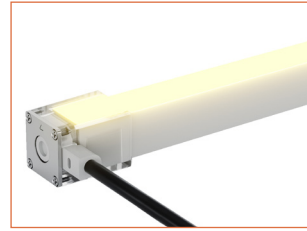
Solderless & Glueless Mechanical End Caps for Horizontal Bending(Optional, purchase for extra)



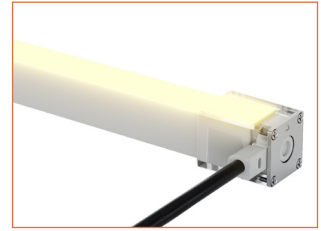
NF1617S-MEC-LF-2P
Mechanical end cap with screws, left front entry, 11.8lin. (300mm) cable, 2 pin, IP67



NF1617S-MEC-RF-2P
Mechanical end cap with screws, right front entry, 11.8lin. (300mm) cable, 2 pin, IP67



NF1617S-MEC-LS-2P
Mechanical end cap with screws, left side entry, 11.8lin. (300mm) cable, 2 pin, IP67



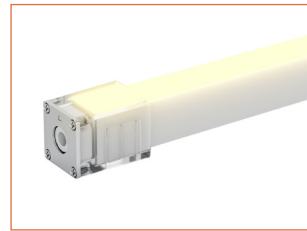
NF1617S-MEC-RS-2P
Mechanical end cap with screws, right side entry, 11.8lin. (300mm) cable, 2 pin, IP67



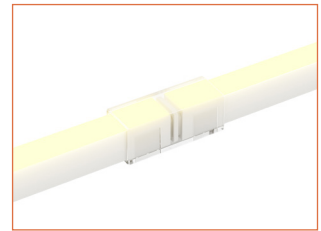
NF1617S-MEC-LB-2P
Mechanical end cap with screws, left bottom entry, 11.8lin. (300mm) cable, 2 pin, IP67



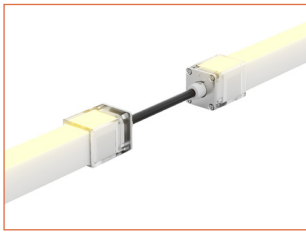
NF1617S-MEC-RB-2P
Mechanical end cap with screws, right bottom entry, 11.8lin. (300mm) cable, 2 pin, IP67



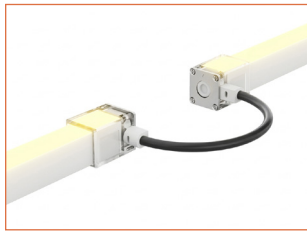
NF1617S-MEC-C
Mechanical closed end cap with screws, IP67



NF1617S-S-S-2P
Strip to strip connector, 2 pin, IP54



NF1617S-JC-F-2P
Jumper connector front entry, 5.9in. (150mm) cable, 2 pin, IP67



NF1617S-JC-S-2P
Jumper connector side entry, 5.9in. (150mm) cable, 2 pin, IP67



NF1617S-JC-B-2P
Jumper connector bottom entry, 5.9in. (150mm) cable, 2 pin, IP67

Additional Accessories (Optional, purchase for extra)



MCW-2P-67
Male connector, 11.8lin. (300mm) white cable, 2 pin, IP67, Wet, 18 AWG



FCW-2P-67
Female connector, 11.8lin. (300mm) white cable, 2 pin, IP67, Wet, 18 AWG



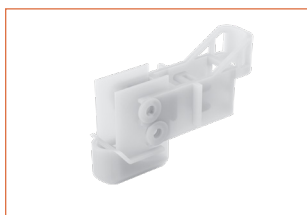
MCB-2P-67
Male connector, 11.8lin. (300mm) black cable, 2 pin, IP67, Wet, 18 AWG



FCB-2P-67
Female connector, 11.8lin. (300mm) black cable, 2 pin, IP67, Wet, 18 AWG



ADJS
1 Adjustable Angle Scissors Set, with 4 Spare Blades



NF1617-IT
Installation tool for NF1617-BPC

LINIO NEON 1617 HE

Outdoor · Vertical Bending · Horizontal Bending

Drivers

Non-dimmable

Code	Max Load	Input	Output	Class 2	With Junction Box	Environment	Size (L x W x H)
KV-24030-ASW	30W	100-277VAC	24V	Yes	No	Dry/Damp	6.1 x 2.1 x 0.8in. (155 x 54 x 20mm)
KV-24060-ASW	60W	100-277VAC	24V	Yes	No	Dry/Damp	7 x 2.4 x 0.9in. (178 x 61 x 24mm)
KV-24096-ASW	96W	100-277VAC	24V	Yes	No	Dry/Damp/Wet	9.1 x 2.8 x 1.7in. (230 x 70 x 43mm)

Phase cut/Triac-dimmable

Code	Max Load	Input	Output	Class 2	With Junction Box	Environment	Size (L x W x H)
KVF-24030-TDW	30W	100-277VAC	24V	Yes	No	Dry/Damp	6.1 x 2.1 x 0.8in. (155 x 54 x 20mm)
KVF-24060-TDW	60W	100-277VAC	24V	Yes	No	Dry/Damp	7 x 2.4 x 0.9in. (178 x 61 x 24mm)
KVF-24096-TDW	96W	100-277VAC	24V	Yes	No	Dry/Damp/Wet	9.1 x 2.8 x 1.7in. (230 x 70 x 43mm)
KVF-24030-TDWJ	30W	100-277VAC	24V	Yes	Yes	Dry/Damp	6.5 x 3.6 x 1in. (165 x 92 x 26mm)
KVF-24060-TDWJ	60W	100-277VAC	24V	Yes	Yes	Dry/Damp	7.4 x 3.6 x 1in. (188 x 92 x 26mm)
KVF-24096-TDWJ	96W	100-277VAC	24V	Yes	Yes	Dry/Damp	8.7 x 3.7 x 1.6in. (220 x 93 x 41mm)
KVF-24192-TDWJ	192W (96Wx2)	100-277VAC	24V	Yes	Yes	Dry/Damp	10.9 x 4.3 x 1.8in. (278 x 110 x 45mm)
KVF-24288-TDWJ	288W (96Wx3)	100-277VAC	24V	Yes	Yes	Dry/Damp	11.9 x 4.3 x 1.8in. (301 x 110 x 45mm)
KVF-24384-TDWJ	384W (96Wx4)	100-277VAC	24V	Yes	Yes	Dry/Damp	12.7 x 5.5 x 1.9in. (323 x 140 x 48mm)

4 in 1-dimmable (0-10V/1-10V/Potentiometer/10V PWM)

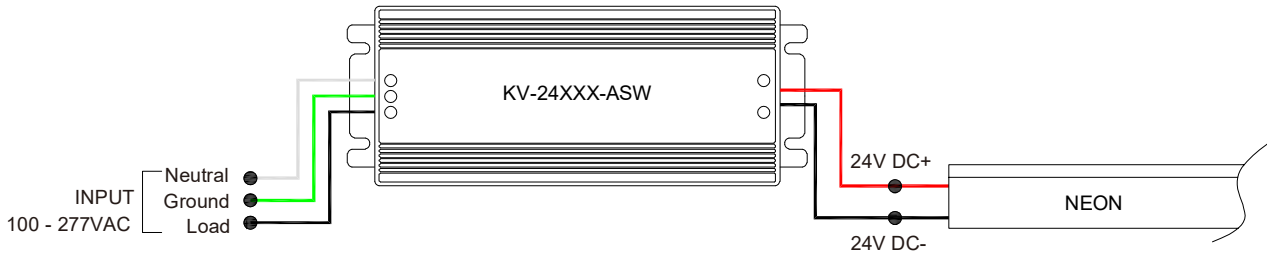
Code	Max Load	Input	Output	Class 2	With Junction Box	Environment	Size (L x W x H)
KVD-24030-DIM	30W	100-277VAC	24V	Yes	No	Dry/Damp	6.1 x 2.1 x 0.8in. (155 x 54 x 20mm)
KVD-24060-DIM	60W	100-277VAC	24V	Yes	No	Dry/Damp	7 x 2.4 x 0.9in. (178 x 61 x 24mm)
KVD-24096-DIM	96W	100-277VAC	24V	Yes	No	Dry/Damp/Wet	9.1 x 2.8 x 1.7in. (230 x 70 x 43mm)
KVD-24030-DIMJ	30W	100-277VAC	24V	Yes	Yes	Dry/Damp	6.5 x 3.6 x 1in. (165 x 92 x 26mm)
KVD-24060-DIMJ	60W	100-277VAC	24V	Yes	Yes	Dry/Damp	7.4 x 3.6 x 1in. (188 x 92 x 26mm)
KVD-24096-DIMJ	96W	100-277VAC	24V	Yes	Yes	Dry/Damp	8.7 x 3.7 x 1.6in. (220 x 93 x 41mm)
KVD-24192-DIMJ	192W (96Wx2)	100-277VAC	24V	Yes	Yes	Dry/Damp	10.9 x 4.3 x 1.8in. (278 x 110 x 45mm)
KVD-24288-DIMJ	288W (96Wx3)	100-277VAC	24V	Yes	Yes	Dry/Damp	11.9 x 4.3 x 1.8in. (301 x 110 x 45mm)
KVD-24384-DIMJ	384W (96Wx4)	100-277VAC	24V	Yes	Yes	Dry/Damp	12.7 x 5.5 x 1.9in. (323 x 140 x 48mm)

5 in 1-dimmable (Triac/0-10V/1-10V/Potentiometer/10V PWM)

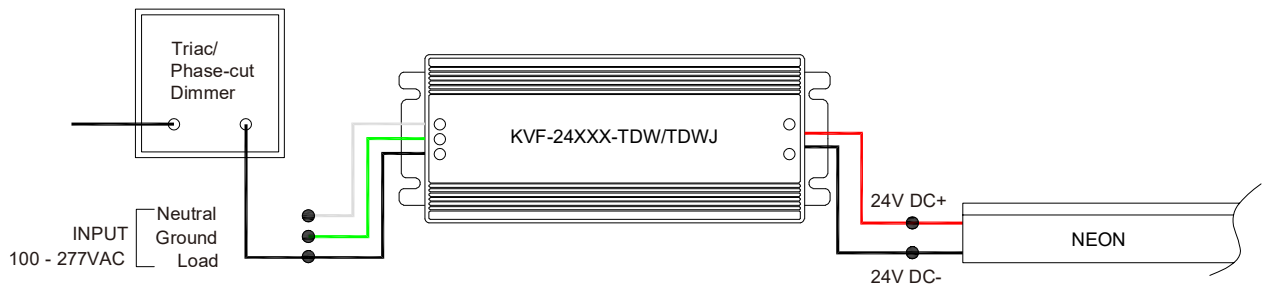
Code	Max Load	Input	Output	Class 2	With Junction Box	Environment	Size (L x W x H)
KVG-24030-DW	30W	100-277VAC	24V	Yes	No	Dry/Damp	6.1 x 2.1 x 0.8in. (155 x 54 x 20mm)
KVG-24060-DW	60W	100-277VAC	24V	Yes	No	Dry/Damp	7 x 2.4 x 0.9in. (178 x 61 x 24mm)
KVG-24096-DW	96W	100-277VAC	24V	Yes	No	Dry/Damp/Wet	9.1 x 2.8 x 1.7in. (230 x 70 x 43mm)
KVG-24030-DWJ	30W	100-277VAC	24V	Yes	Yes	Dry/Damp	6.5 x 3.7 x 1.6in. (165 x 95 x 40mm)
KVG-24060-DWJ	60W	100-277VAC	24V	Yes	Yes	Dry/Damp	7.4 x 3.7 x 1.6in. (188 x 95 x 40mm)
KVG-24096-DWJ	96W	100-277VAC	24V	Yes	Yes	Dry/Damp	8.7 x 3.7 x 1.6in. (220 x 95 x 40mm)
KVG-C24192-DWJ	192W (96Wx2)	100-277VAC	24V	Yes	Yes	Dry/Damp	10.9 x 4.3 x 1.8in. (278 x 110 x 45mm)
KVG-C24288-DWJ	288W (96Wx3)	100-277VAC	24V	Yes	Yes	Dry/Damp	11.9 x 4.3 x 1.8in. (301 x 110 x 45mm)
KVG-C24384-DWJ	384W (96Wx4)	100-277VAC	24V	Yes	Yes	Dry/Damp	12.8 x 5.5 x 1.9in. (325 x 140 x 48mm)

Wiring Diagram

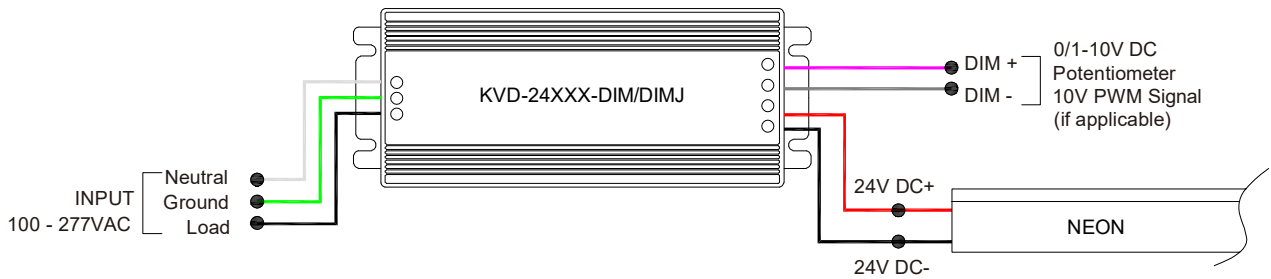
Non-dimmable



Phase cut/Triac-dimmable



4 in 1-dimmable (0-10V/1-10V/Potentiometer/10V PWM)



5 in 1-dimmable (Triac/0-10V/1-10V/Potentiometer/10V PWM)



LINIO NEON 1617 HE

Outdoor · Vertical Bending · Horizontal Bending

24V Voltage Drop & Maximum Wire Length Chart

Based on 24V voltage with a 3% voltage drop allowance. Indicates the maximum wire length from the power supply to the start of the run.

Total load	8AWG	10AWG	12AWG	14AWG	16AWG	18AWG	20AWG	22AWG
10W / 0.4A	1588ft (484.0m)	999ft (304.5m)	628ft (191.4m)	395ft (120.4m)	248ft (75.5m)	156ft (47.5m)	98ft (29.8m)	61ft (18.5m)
20W / 0.8A	794ft (242.0m)	499ft (152.1m)	314ft (95.7m)	197ft (60.0m)	124ft (37.8m)	78ft (23.7m)	49ft (14.9m)	30ft (9.1m)
30W / 1.3A	529ft (161.2m)	333ft (101.5m)	209ft (63.7m)	131ft (39.9m)	82ft (24.9m)	52ft (15.8m)	32ft (9.7m)	20ft (6.1m)
40W / 1.7A	397ft (121.0m)	249ft (75.9m)	157ft (47.8m)	98ft (29.8m)	62ft (18.9m)	39ft (11.8m)	24ft (7.3m)	15ft (4.5m)
50W / 2.1A	317ft (96.6m)	199ft (60.6m)	125ft (38.1m)	79ft (24.0m)	49ft (14.9m)	31ft (9.4m)	19ft (5.7m)	12ft (3.6m)
60W / 2.5A	264ft (80.4m)	166ft (50.6m)	104ft (31.7m)	65ft (19.8m)	41ft (12.5m)	26ft (7.9m)	16ft (4.8m)	10ft (3.0m)
70W / 2.9A	226ft (68.8m)	142ft (43.2m)	89ft (27.1m)	56ft (17.0m)	35ft (10.6m)	22ft (6.7m)	14ft (4.2m)	8ft (2.4m)
80W / 3.3A	198ft (60.3m)	124ft (37.8m)	78ft (23.7m)	49ft (14.9m)	31ft (9.4m)	19ft (5.7m)	12ft (3.6m)	7ft (2.1m)
90W / 3.8A	176ft (53.6m)	111ft (33.8m)	69ft (21.0m)	43ft (13.1m)	27ft (8.2m)	17ft (5.1m)	10ft (3.0m)	6ft (1.8m)
100W / 4.2A	158ft (48.1m)	99ft (30.1m)	62ft (18.9m)	39ft (11.8m)	24ft (7.3m)	15ft (4.5m)	9ft (2.7m)	6ft (1.8m)
110W / 4.6A	144ft (43.8m)	90ft (27.4m)	57ft (17.3m)	35ft (10.6m)	22ft (6.7m)	14ft (4.2m)	9ft (2.7m)	5ft (1.5m)
120W / 5.0A	132ft (40.2m)	83ft (25.3m)	52ft (15.8m)	32ft (9.7m)	20ft (6.1m)	13ft (3.9m)	8ft (2.4m)	5ft (1.5m)
130W / 5.4A	122ft (37.1m)	76ft (23.1m)	48ft (14.6m)	30ft (9.1m)	19ft (5.7m)	12ft (3.6m)	7ft (2.1m)	4ft (1.2m)
140W / 5.8A	113ft (34.4m)	71ft (21.6m)	44ft (13.4m)	28ft (8.5m)	17ft (5.1m)	11ft (3.3m)	7ft (2.1m)	4ft (1.2m)
150W / 6.3A	105ft (32.0m)	66ft (20.1m)	41ft (12.5m)	26ft (7.9m)	16ft (4.8m)	10ft (3.0m)	6ft (1.8m)	4ft (1.2m)
160W / 6.7A	99ft (30.1m)	62ft (18.9m)	39ft (11.8m)	24ft (7.3m)	15ft (4.5m)	9ft (2.7m)	6ft (1.8m)	3ft (0.9m)
170W / 7.1A	93ft (28.3m)	58ft (17.6m)	36ft (10.9m)	23ft (7.0m)	14ft (4.2m)	9ft (2.7m)	5ft (1.5m)	3ft (0.9m)
180W / 7.5A	88ft (26.8m)	55ft (16.7m)	34ft (10.3m)	22ft (6.7m)	13ft (3.9m)	8ft (2.4m)	5ft (1.5m)	3ft (0.9m)
190W / 7.9A	83ft (25.3m)	52ft (15.8m)	33ft (10.0m)	20ft (6.0m)	13ft (3.9m)	8ft (2.4m)	5ft (1.5m)	3ft (0.9m)
200W / 8.3A	79ft (24.0m)	49ft (14.9m)	31ft (9.4m)	19ft (5.7m)	12ft (3.6m)	7ft (2.1m)	4ft (1.2m)	3ft (0.9m)
210W / 8.8A	75ft (22.8m)	47ft (14.3m)	29ft (8.8m)	18ft (5.4m)	11ft (3.3m)	7ft (2.1m)	4ft (1.2m)	2ft (0.6m)
220W / 9.2A	72ft (21.9m)	45ft (13.7m)	28ft (8.5m)	18ft (5.4m)	11ft (3.3m)	7ft (2.1m)	4ft (1.2m)	2ft (0.6m)
230W / 9.6A	69ft (21.0m)	43ft (13.1m)	27ft (8.2m)	17ft (5.1m)	10ft (3.0m)	6ft (1.8m)	4ft (1.2m)	2ft (0.6m)
240W / 10.0A	66ft (20.1m)	41ft (12.5m)	26ft (7.9m)	16ft (4.8m)	10ft (3.0m)	6ft (1.8m)	4ft (1.2m)	2ft (0.6m)
250W / 10.4A	63ft (19.2m)	40ft (12.1m)	25ft (7.6m)	15ft (4.5m)	9ft (2.7m)	6ft (1.8m)	3ft (0.9m)	2ft (0.6m)