

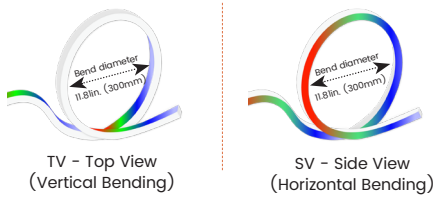
Features

- Robust silicone body, uniform illumination, addressable RGBW control
- IP68 rated, ideal for outdoor uses, not for underwater project
- 5 years warranty

Applications

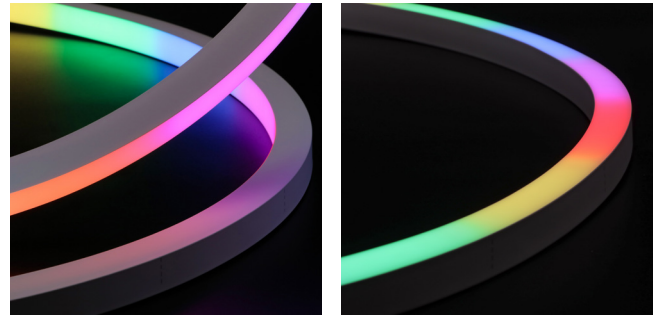
Hotels, facades, gardens, parks, balconies, roofs, soffits, etc.

Bending Directions & Diameters



Date _____ Fixture type _____

Project name _____ Project phase _____



Dimensions



Order Code

Model	Environment	Voltage	CCT	Power	End Cap	Left Feed Entry
LN1617TV	W8-Wet (IP68)	24V-DC24V	PRGBW27K-Pixel RGBW2700K	4.6-4.57W/ft	FT Flush Translucent	F Front
LN1617SV			PRGBW30K-Pixel RGBW3000K		FO Flush Opaque	B Bottom
			PRGBW35K-Pixel RGBW3500K			S Side
			PRGBW40K-Pixel RGBW4000K			C Closed

Assembly Builder

Left Feed Entry
OW Open wire 3.28ft (1m)
MC Male connector with 11.8in. (300mm) cable
FC Female connector with 11.8in. (300mm) cable
NA Only for Closed Feed Entry

Assembly Builder

Right Feed Entry	Length
F Front	OW Open wire 3.28ft (1m)
B Bottom	MC Male connector with 11.8in. (300mm) cable
S Side	FC Female connector with 11.8in. (300mm) cable
C Closed	NA Only for Closed Feed Entry
	Max. nominal 16.4ft (5m)
	Increment 3.28in. (83.3mm)

Mounting Order Code

Product Code
Please select on the Mounting Options page

*We will list the nearest actual manufacturing length on the quotation, based on your requested length.

LINIO NEON 1617 PIXEL RGBW

Outdoor · Vertical Bending · Horizontal Bending

Lumen Output (lm/ft)

CCT	Vertical Bending	Horizontal Bending
	4.57W/ft	4.57W/ft
■ R	18	13
■ G	52	39
■ B	13	10
■ W27K	59	45
■ W30K	63	48
■ W35K	65	49
■ W40K	66	50
■ PRGBW27K	140	104
■ PRGBW30K	143	107
■ PRGBW35K	145	105
■ PRGBW40K	147	107
Max. Run for Class 2*	16.4ft (5m)	16.4ft (5m)
Max. Run Supported Length	16.4ft (5m)	16.4ft (5m)

*Typically installations in USA and Canada comply with Class 2 requirements

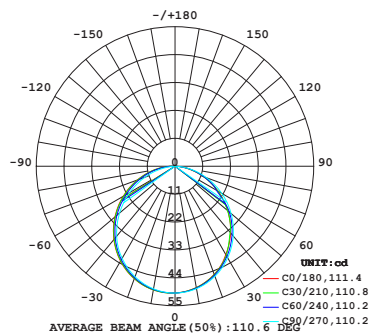
Technical Details

Parameter	Vertical Bending	Horizontal Bending
Efficacy	31lm/W @PRGBW30K 4.57W	23lm/W @PRGBW30K 4.57W
CRI	Ra>80	Ra>80
IK Rating	IK10 (with aluminium profile)	IK10 (with aluminium profile)
Average Life (L80B10)	>46,000 hours	>46,000 hours
IC Model	UCS 512CL	UCS 512CL
Pixel Size	3.3in./pixel (83mm/pixel)	3.3in./pixel (83mm/pixel)
Storage Temperature	-40°F-149°F (-40°C~ 65°C)	-40°F-149°F (-40°C~ 65°C)
Operating Temperature	-40°F-149°F (-40°C~ 65°C)	-40°F-149°F (-40°C~ 65°C)

Photometry

LNI617TV-W8-24V-PRGBW30K-4.6-FT-F-OW-F-OW

LINIO NEON 1617 TV PIXEL RGBW, Vertical bend, PRGBW30K, 4.57W/ft

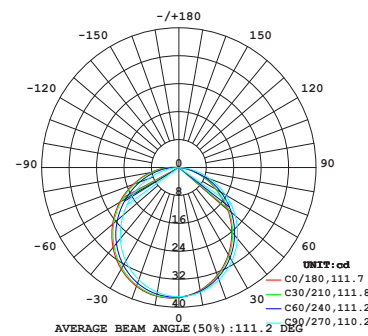


Zonal Lumen Summary

Zone	Lumen	% Fixture
0-30	38.6	26.9%
0-40	63.1	43.8%
0-60	110.8	77.0%
0-90	142.1	98.8%
0-180	143.9	100.0%

LNI617SV-W8-24V-PRGBW30K-4.6-FT-F-OW-F-OW

LINIO NEON 1617 SV PIXEL RGBW, Horizontal bend, PRGBW30K, 4.57W/ft



Zonal Lumen Summary

Zone	Lumen	% Fixture
0-30	28.7	26.7%
0-40	46.8	43.6%
0-60	82.5	76.8%
0-90	106.2	98.8%
0-180	107.5	100.0%

Beamever

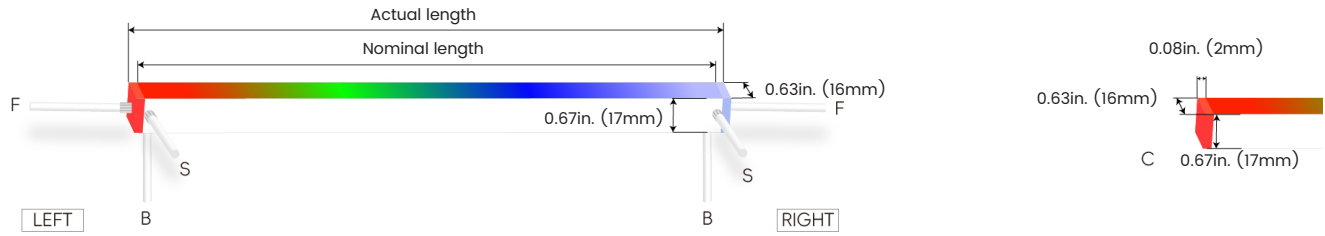
LINIO NEON 1617 PIXEL RGBW

Designer's Custom Playground

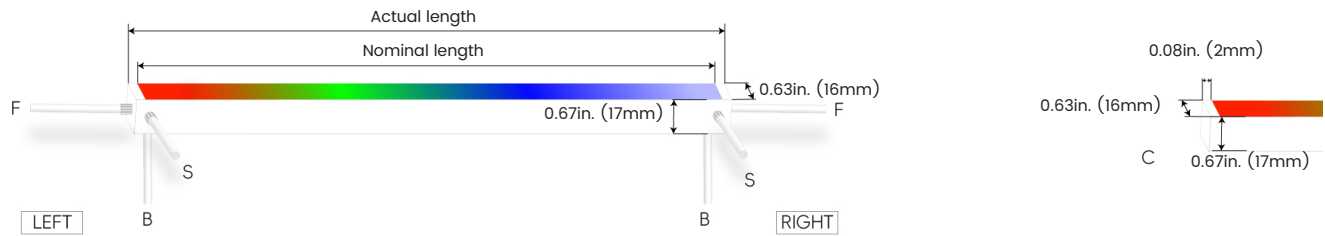
Outdoor · Vertical Bending · Horizontal Bending

Feed Entry / End Cap Options

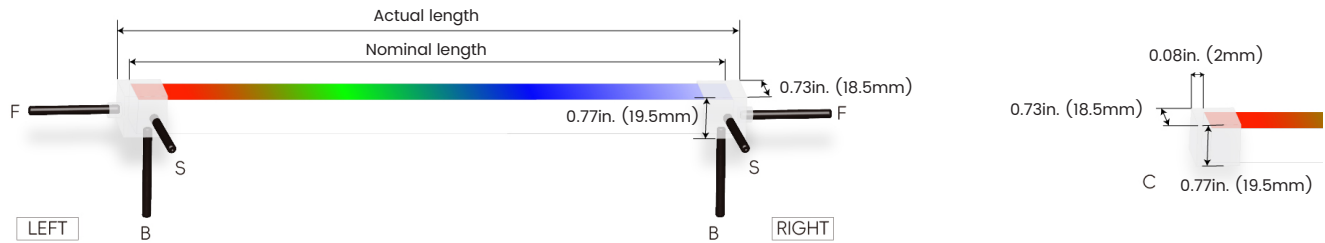
FT: Flush Translucent – IP68, factory-made only



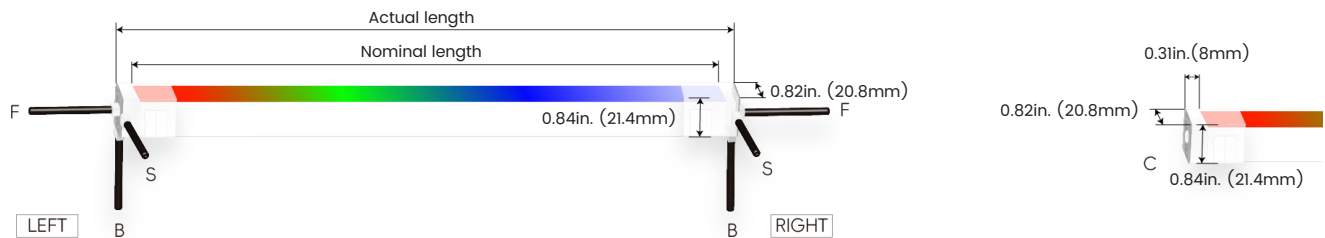
FO: Flush Opaque – IP68, factory-made only



Silicone end cap – IP67, for field cuttable only



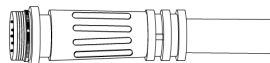
Mechanical end cap with screws – IP67, for field cuttable only



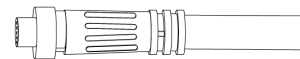
Connector Wire Options



OW: Open wire, **Dry only**
Standard 11.8in. (300mm), 20 AWG,
wire length customizable

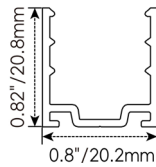
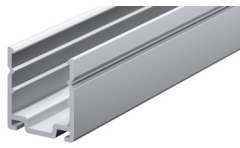


MC: Male connector, **Wet**
Standard 11.8in. (300mm), 22 AWG



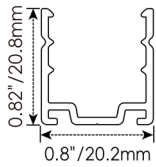
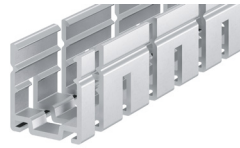
FC: Female connector, **Wet**
Standard 11.8in. (300mm), 22 AWG

Mounting Options



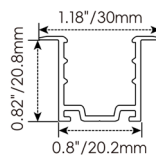
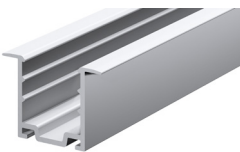
NF1617-SC

Name	Straight surface channel
Material	Aluminum
Standard Length	3.28ft (1m)



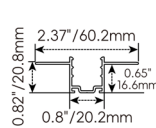
NF1617-BC

Name	Bendable surface channel
Material	Aluminum
Standard Length	3.28ft (1m)
Min. Bending Radius	11.8in (300mm)



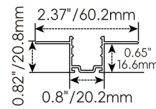
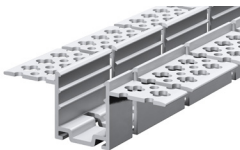
NF1617-RC

Name	Straight recessed channel
Material	Aluminum
Standard Length	3.28ft (1m)



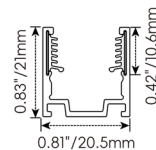
NF1617-MC

Name	Mud-in channel
Material	Aluminum
Standard Length	3.28ft (1m)



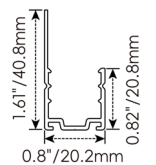
NF1617-BMC

Name	Bendable mud-in channel
Material	Aluminum
Standard Length	3.28ft (1m)
Min. Top Bending Radius	11.8in (300mm)
Min. Side Bending Radius	31.5in. (800mm)



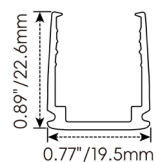
NF1617-SCS

Name	Straight surface channel
Material	Aluminum with silicone groove
Standard Length	3.28ft (1m)



NF1617-LBC

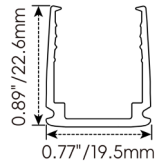
Name	Light-block channel
Material	Aluminum
Standard Length	3.28ft (1m)



NF1617-PC

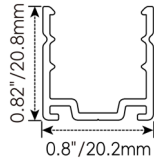
Name	PC channel
Material	Polycarbonate
Standard Length	3.28ft (1m)

Mounting Options



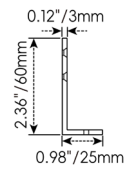
NF1617-BPC

Name	Bendable surface channel
Material	Polycarbonate
Standard Length	3.28ft (1m)
Min. Bending Radius	5.91in. (150mm)



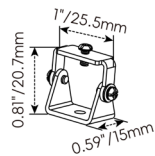
NF1617-CL

Name	Mounting clip
Material	Aluminum
Standard Length	0.98in. (25mm)



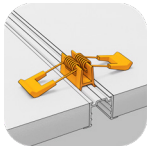
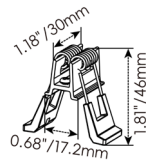
NF1617-LS

Name	L-shaped mounting bracket
Material	Aluminum
Standard Length	0.79in. (20mm)
* NF1617-LS must be installed with NF1617-SC	



NF1617-AC

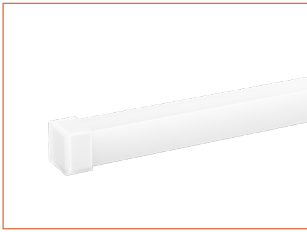
Name	Adjustable mounting clip
Material	Stainless steel
Standard Length	1 in. (25.5mm)
* NF1617-AC must be installed with NF1617-SC	



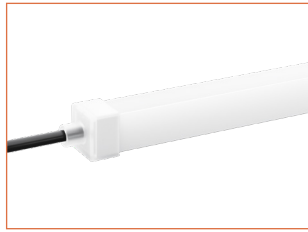
NF1617-RC-SPC

Name	Spring clip
Standard Pkg	1pcs
* NF1617-RC-SPC must be installed with NF1617-RC	

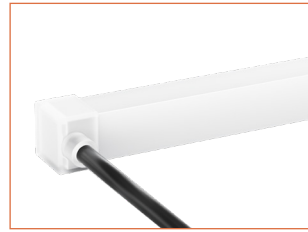
Silicone End Caps (Optional, purchase for extra)



NF1617-SEC-C
Silicone closed end cap



NF1617-SEC-F-5P
Silicone end cap front entry with 11.81in. (300mm) cable, 5 pin

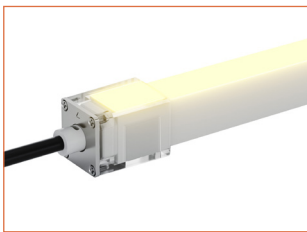


NF1617-SEC-S-5P
Silicone end cap side entry with 11.81in. (300mm) cable, 5 pin

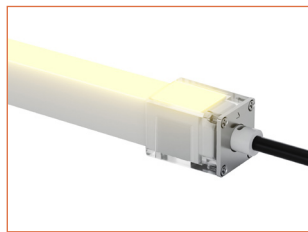


NF1617-SEC-B-5P
Silicone end cap bottom entry with 11.81in. (300mm) cable, 5 pin

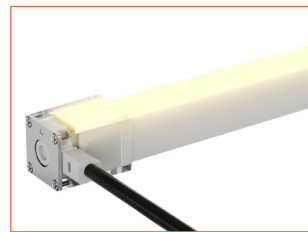
Solderless & Glueless Mechanical End Caps for Vertical Bending(Optional, purchase for extra)



NF1617T-MEC-LF-5P
Mechanical end cap with screws, left front entry, 11.81in. (300mm) cable, 5 pin, IP67



NF1617T-MEC-RF-5P
Mechanical end cap with screws, right front entry, 11.81in. (300mm) cable, 5 pin, IP67



NF1617T-MEC-LS-5P
Mechanical end cap with screws, left side entry, 11.81in. (300mm) cable, 5 pin, IP67



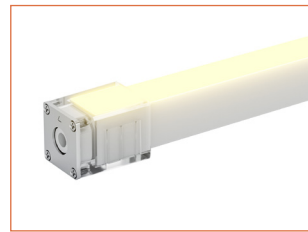
NF1617T-MEC-RS-5P
Mechanical end cap with screws, right side entry, 11.81in. (300mm) cable, 5 pin, IP67



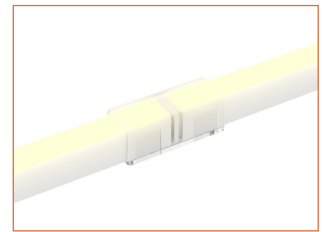
NF1617T-MEC-LB-5P
Mechanical end cap with screws, left bottom entry, 11.81in. (300mm) cable, 5 pin, IP67



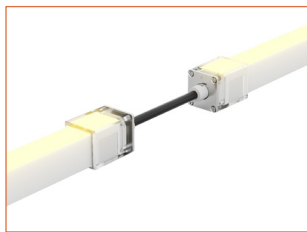
NF1617T-MEC-RB-5P
Mechanical end cap with screws, right bottom entry, 11.81in. (300mm) cable, 5 pin, IP67



NF1617T-MEC-C
Mechanical closed end cap with screws, IP67



NF1617T-S-S-5P
Strip to strip connector, 5 pin, IP54



NF1617T-JC-F-5P
Jumper connector front entry, 5.9in. (150mm) cable, 5 pin, IP67

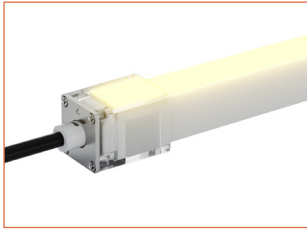


NF1617T-JC-S-5P
Jumper connector side entry, 5.9in. (150mm) cable, 5 pin, IP67

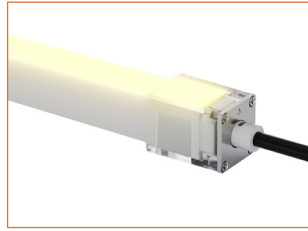


NF1617T-JC-B-5P
Jumper connector bottom entry, 5.9in. (150mm) cable, 5 pin, IP67

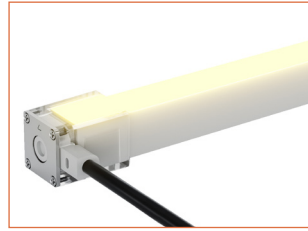
Solderless & Glueless Mechanical End Caps for Horizontal Bending(Optional, purchase for extra)



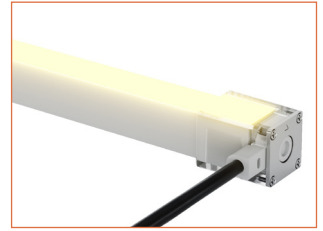
NF1617S-MEC-LF-5P
Mechanical end cap with screws,
left front entry,
11.8lin. (300mm) cable, 5 pin, IP67



NF1617S-MEC-RF-5P
Mechanical end cap with screws,
right front entry,
11.8lin. (300mm) cable, 5 pin, IP67



NF1617S-MEC-LS-5P
Mechanical end cap with screws,
left side entry,
11.8lin. (300mm) cable, 5 pin, IP67



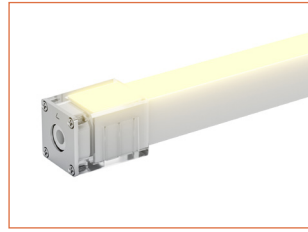
NF1617S-MEC-RS-5P
Mechanical end cap with screws,
right side entry,
11.8lin. (300mm) cable, 5 pin, IP67



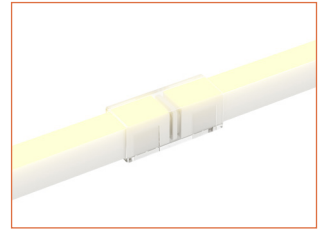
NF1617S-MEC-LB-5P
Mechanical end cap with screws,
left bottom entry,
11.8lin. (300mm) cable, 5 pin, IP67



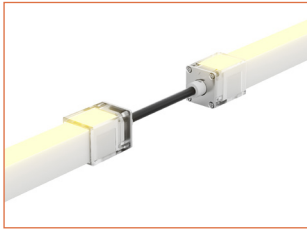
NF1617S-MEC-RB-5P
Mechanical end cap with screws,
right bottom entry,
11.8lin. (300mm) cable, 5 pin, IP67



NF1617S-MEC-C
Mechanical closed end cap with
screws, IP67



NF1617S-S-S-5P
Strip to strip connector,
5 pin, IP54



NF1617S-JC-F-5P
Jumper connector front entry,
5.9in. (150mm) cable, 5 pin, IP67



NF1617S-JC-S-5P
Jumper connector side entry,
5.9in. (150mm) cable, 5 pin, IP67



NF1617S-JC-B-5P
Jumper connector bottom entry,
5.9in. (150mm) cable, 5 pin, IP67

Additional Accessories (Optional, purchase for extra)



MCW-5P-67
Male connector,
11.8in. (300mm) white cable,
5 pin, IP67, Wet, 22 AWG



FCW-5P-67
Female connector,
11.8in. (300mm) white cable,
5 pin, IP67, Wet, 22 AWG



MCB-5P-67
Male connector,
11.8in. (300mm) black cable,
5 pin, IP67, Wet, 22 AWG



FCB-5P-67
Female connector,
11.8in. (300mm) black cable,
5 pin, IP67, Wet, 22 AWG



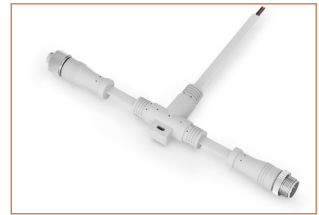
SW-3P-6
Shielded signal wire,
standard 20ft(6m), customizable
3 pin, 18AWG



SC-3P-6
XLR3 extension signal connector,
standard 20ft(6m), customizable
3 pin



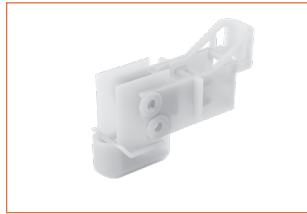
NC-6
RJ45 extension network connector,
standard 20ft(6m), customizable
3 pin



MFTCW-5P-67
Male and female T-shaped connector,
white cable,
5 pin, IP67, Wet



ADJS
1 Adjustable Angle Scissors Set,
with 4 Spare Blades



NF1617-IT
Installation tool for NF1617-BPC

LINIO NEON 1617 PIXEL RGBW

Outdoor · Vertical Bending · Horizontal Bending

Drivers

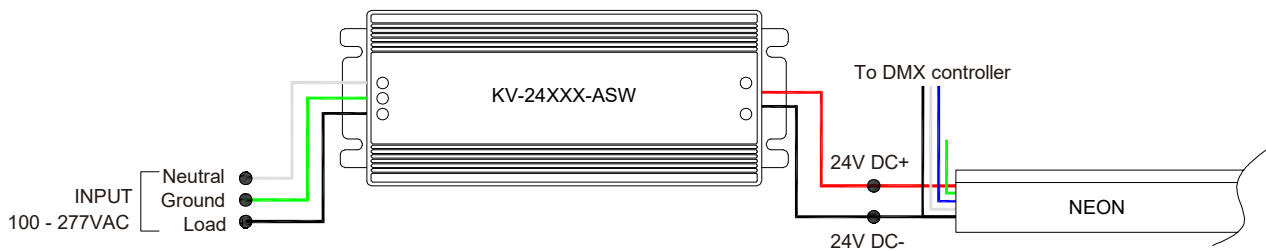
Non-dimmable

Code	Max Load	Input	Output	Class 2	With Junction Box	Environment	Size (L x W x H)
KV-24030-ASW	30W	100-277VAC	24V	Yes	No	Dry/Damp	6.1 x 2.1 x 0.8in. (15.5 x 5.4 x 2cm)
KV-24060-ASW	60W	100-277VAC	24V	Yes	No	Dry/Damp	7 x 2.4 x 0.9in. (17.8 x 6.1 x 2.4cm)
KV-24096-ASW	96W	100-277VAC	24V	Yes	No	Dry/Damp/Wet	9.1 x 2.8 x 1.7in. (23 x 7 x 4.3cm)

Controllers Options

Code	Description
DINA-DR micro	DMX 60 channels, DMX Stand Alone controller with 10 scenes, USB connectivity for programming
SLESA-U9	DMX 256 channels, USB connection, standalone mode with 1 area and 20 scenes
STICK-GA2	DMX 512 channels, ready to use (pre-loaded with 8 scenes and 170 RGB fixtures)
STICK-CW4	DMX 1024 channels, up to 36 scenes stored and directly recalled via 6 touch sensitive buttons

Wiring Diagram



LINIO NEON 1617 PIXEL RGBW

Outdoor · Vertical Bending · Horizontal Bending

24V Voltage Drop & Maximum Wire Length Chart

Based on 24V voltage with a 3% voltage drop allowance. Indicates the maximum wire length from the power supply to the start of the run.

Total load	8AWG	10AWG	12AWG	14AWG	16AWG	18AWG	20AWG	22AWG
10W / 0.4A	1588ft (484.0m)	999ft (304.5m)	628ft (191.4m)	395ft (120.4m)	248ft (75.5m)	156ft (47.5m)	98ft (29.8m)	61ft (18.5m)
20W / 0.8A	794ft (242.0m)	499ft (152.1m)	314ft (95.7m)	197ft (60.0m)	124ft (37.8m)	78ft (23.7m)	49ft (14.9m)	30ft (9.1m)
30W / 1.3A	529ft (161.2m)	333ft (101.5m)	209ft (63.7m)	131ft (39.9m)	82ft (24.9m)	52ft (15.8m)	32ft (9.7m)	20ft (6.1m)
40W / 1.7A	397ft (121.0m)	249ft (75.9m)	157ft (47.8m)	98ft (29.8m)	62ft (18.9m)	39ft (11.8m)	24ft (7.3m)	15ft (4.5m)
50W / 2.1A	317ft (96.6m)	199ft (60.6m)	125ft (38.1m)	79ft (24.0m)	49ft (14.9m)	31ft (9.4m)	19ft (5.7m)	12ft (3.6m)
60W / 2.5A	264ft (80.4m)	166ft (50.6m)	104ft (31.7m)	65ft (19.8m)	41ft (12.5m)	26ft (7.9m)	16ft (4.8m)	10ft (3.0m)
70W / 2.9A	226ft (68.8m)	142ft (43.2m)	89ft (27.1m)	56ft (17.0m)	35ft (10.6m)	22ft (6.7m)	14ft (4.2m)	8ft (2.4m)
80W / 3.3A	198ft (60.3m)	124ft (37.8m)	78ft (23.7m)	49ft (14.9m)	31ft (9.4m)	19ft (5.7m)	12ft (3.6m)	7ft (2.1m)
90W / 3.8A	176ft (53.6m)	111ft (33.8m)	69ft (21.0m)	43ft (13.1m)	27ft (8.2m)	17ft (5.1m)	10ft (3.0m)	6ft (1.8m)
100W / 4.2A	158ft (48.1m)	99ft (30.1m)	62ft (18.9m)	39ft (11.8m)	24ft (7.3m)	15ft (4.5m)	9ft (2.7m)	6ft (1.8m)
110W / 4.6A	144ft (43.8m)	90ft (27.4m)	57ft (17.3m)	35ft (10.6m)	22ft (6.7m)	14ft (4.2m)	9ft (2.7m)	5ft (1.5m)
120W / 5.0A	132ft (40.2m)	83ft (25.3m)	52ft (15.8m)	32ft (9.7m)	20ft (6.1m)	13ft (3.9m)	8ft (2.4m)	5ft (1.5m)
130W / 5.4A	122ft (37.1m)	76ft (23.1m)	48ft (14.6m)	30ft (9.1m)	19ft (5.7m)	12ft (3.6m)	7ft (2.1m)	4ft (1.2m)
140W / 5.8A	113ft (34.4m)	71ft (21.6m)	44ft (13.4m)	28ft (8.5m)	17ft (5.1m)	11ft (3.3m)	7ft (2.1m)	4ft (1.2m)
150W / 6.3A	105ft (32.0m)	66ft (20.1m)	41ft (12.5m)	26ft (7.9m)	16ft (4.8m)	10ft (3.0m)	6ft (1.8m)	4ft (1.2m)
160W / 6.7A	99ft (30.1m)	62ft (18.9m)	39ft (11.8m)	24ft (7.3m)	15ft (4.5m)	9ft (2.7m)	6ft (1.8m)	3ft (0.9m)
170W / 7.1A	93ft (28.3m)	58ft (17.6m)	36ft (10.9m)	23ft (7.0m)	14ft (4.2m)	9ft (2.7m)	5ft (1.5m)	3ft (0.9m)
180W / 7.5A	88ft (26.8m)	55ft (16.7m)	34ft (10.3m)	22ft (6.7m)	13ft (3.9m)	8ft (2.4m)	5ft (1.5m)	3ft (0.9m)
190W / 7.9A	83ft (25.3m)	52ft (15.8m)	33ft (10.0m)	20ft (6.0m)	13ft (3.9m)	8ft (2.4m)	5ft (1.5m)	3ft (0.9m)
200W / 8.3A	79ft (24.0m)	49ft (14.9m)	31ft (9.4m)	19ft (5.7m)	12ft (3.6m)	7ft (2.1m)	4ft (1.2m)	3ft (0.9m)
210W / 8.8A	75ft (22.8m)	47ft (14.3m)	29ft (8.8m)	18ft (5.4m)	11ft (3.3m)	7ft (2.1m)	4ft (1.2m)	2ft (0.6m)
220W / 9.2A	72ft (21.9m)	45ft (13.7m)	28ft (8.5m)	18ft (5.4m)	11ft (3.3m)	7ft (2.1m)	4ft (1.2m)	2ft (0.6m)
230W / 9.6A	69ft (21.0m)	43ft (13.1m)	27ft (8.2m)	17ft (5.1m)	10ft (3.0m)	6ft (1.8m)	4ft (1.2m)	2ft (0.6m)
240W / 10.0A	66ft (20.1m)	41ft (12.5m)	26ft (7.9m)	16ft (4.8m)	10ft (3.0m)	6ft (1.8m)	4ft (1.2m)	2ft (0.6m)
250W / 10.4A	63ft (19.2m)	40ft (12.1m)	25ft (7.6m)	15ft (4.5m)	9ft (2.7m)	6ft (1.8m)	3ft (0.9m)	2ft (0.6m)