

Beamever

LINIO NEON 0408X SV TW

Designer's Custom Playground

Horizontal Bending - Tunable White

Features

- 0.16in. slim profile & Tunable white from 2700K to 6000K
- IP65 rated, ideal for damp location and sheltered exterior
- 5 years warranty

Applications

Under cabinets, niches, shelves, closets, millwork, furnitures, etc.

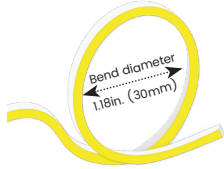
Date

Fixture type

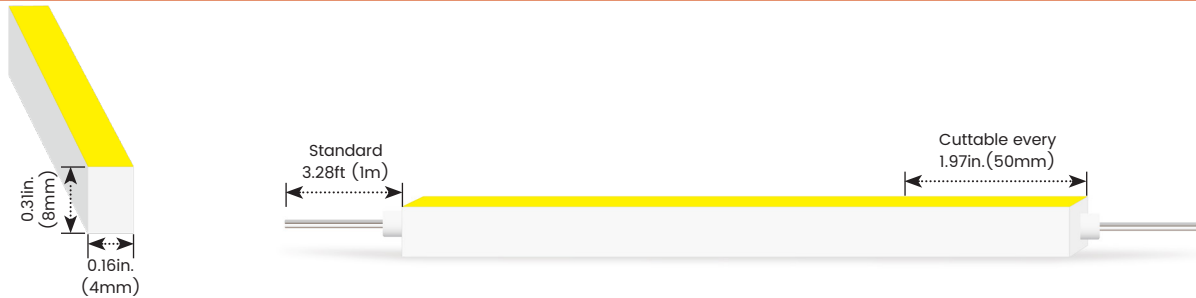
Project name

Project phase

Bending Directions & Diameters



Dimensions



Order Code

Assembly Builder

Model	Environment	Voltage	CCT	Power	End Cap	Left Feed Entry
LN0408XSV	W5-Wet (IP65)	24V-DC24V	27K60K-2700K+6000K	1.8-1.83W/ft	FT Flush Translucent FO Flush Opaque	F Front C Closed OW Open wire 3.28ft (1m) MC Male connector with 7.87in. (200mm) cable FC Female connector with 7.87in. (200mm)cable NA Only for Closed Feed Entry

Assembly Builder

Mounting Order Code

Right Feed Entry	Length
F Front C Closed OW Open wire 3.28ft (1m) MC Male connector with 7.87in. (200mm) cable FC Female connector with 7.87in. (200mm)cable NA Only for Closed Feed Entry	Max. nominal 16.4ft (5m) Increment 1.97in. (50mm)

Product Code
Please select on the Mounting Options page

*We will list the nearest actual manufacturing length on the quotation, based on your requested length.

Lumen Output (lm/ft)

CCT	1.83W/ft
■ 2700K	48
■ 6000K	50
■ 2700K+6000K	49
Max. Run for Class 2*	16.4ft (5m)
Max. Run Supported Length	16.4ft (5m)

*Typically installations in USA and Canada comply with Class 2 requirements

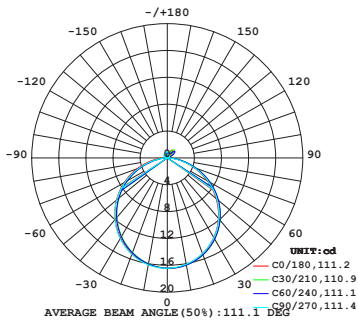
Technical Details

Efficacy	27lm/W @2700K+6000K 1.83W
CRI	Ra≥90
LED MacAdam	3 steps
Average Life (L80B10)	>47,000 hours
Storage Temperature	-40°F~-140°F (-40°C~ 60°C)
Operating Temperature	-40°F~-131°F (-40°C~ 55°C)

Photometry

LN0408XSV-W5-24V-27K60K-1.8-FT-F-OW-F-OW

LINIO NEON 0408X SV TW, Horizontal bend, 2700K+6000K, 1.83W/ft



Zonal Lumen Summary

Zone	Lumen	% Fixture
0-30	12.7	25.9%
0-40	20.8	42.4%
0-60	36.6	74.7%
0-90	46.5	95.1%
0-180	49.0	100.0%

Beamever

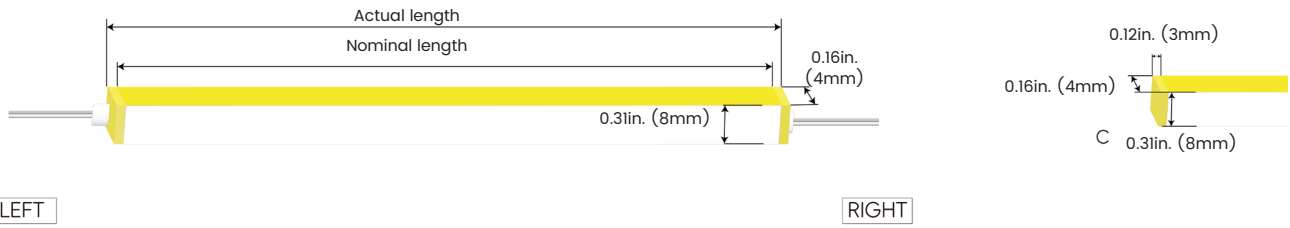
LINIO NEON 0408X SV TW

Designer's Custom Playground

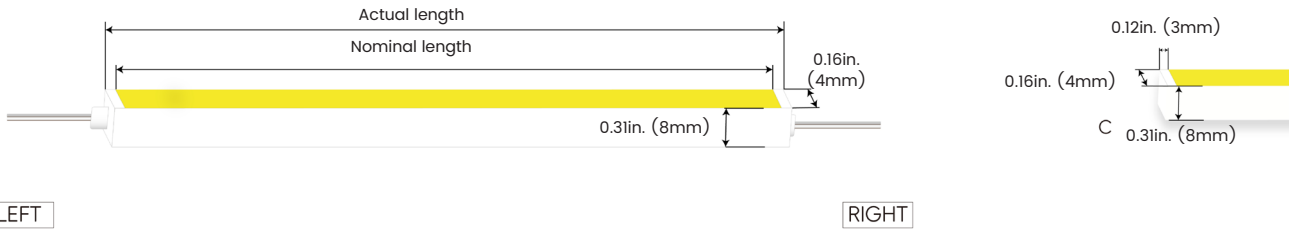
Horizontal Bending - Tunable White

Feed Entry / End Cap Options

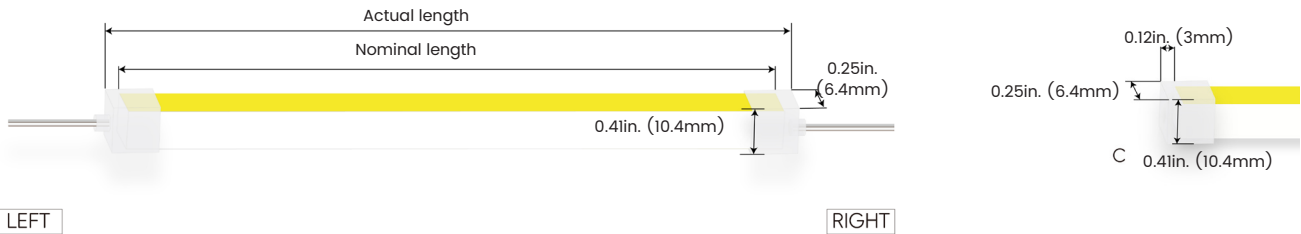
FT: Flush Translucent – IP54, factory-made only



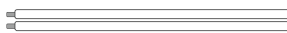
FO: Flush Opaque – IP54, factory-made only



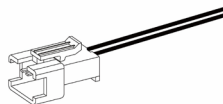
Silicone end cap – IP65, for field cuttable only



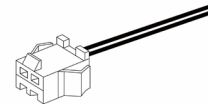
Connector Wire Options



OW: Open wire, Dry only
Standard 11.81in. (300mm), 24 AWG,
wire length customizable

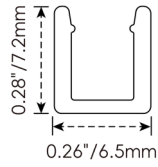


MC: Male connector, Dry
Standard 7.87in. (200mm), 24 AWG



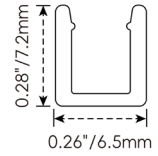
FC: Female connector, Dry
Standard 7.87in. (200mm), 24 AWG

Mounting Options



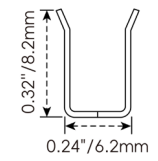
NF0408-SC

Name	Straight surface channel
Material	Aluminum
Standard Length	3.28ft (1m)



NF0408-CL

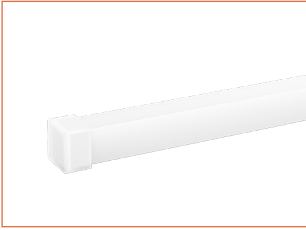
Name	Mounting clip
Material	Aluminum
Standard Length	0.59in. (15mm)



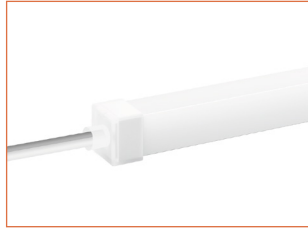
NF0408-BC

Name	Bendable surface channel
Material	Stainless Steel
Standard Length	3.28ft (1m)
Min. Bending Radius	0.59in. (15mm)
*Not suitable for upside-down installation	

Silicone End Caps (Optional, purchase for extra)

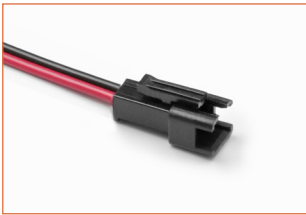


NF0408-SEC-C
Silicone closed end cap

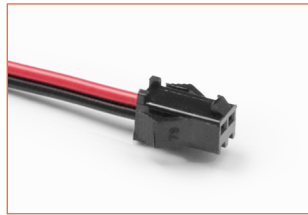


NF0408-SEC-F-2P
Silicone end cap front entry with
11.81in. (300mm) cable, 2 pin

Additional Accessories (Optional, purchase for extra)



MC-2P-20
Male connector,
7.87in. (200mm) red&black cable,
2 pin, IP20, 24 AWG



FC-2P-20
Female connector,
7.87in. (200mm) red&black cable,
2 pin, IP20, 24 AWG



ADJS
1 Adjustable Angle Scissors Set,
with 4 Spare Blades

Drivers

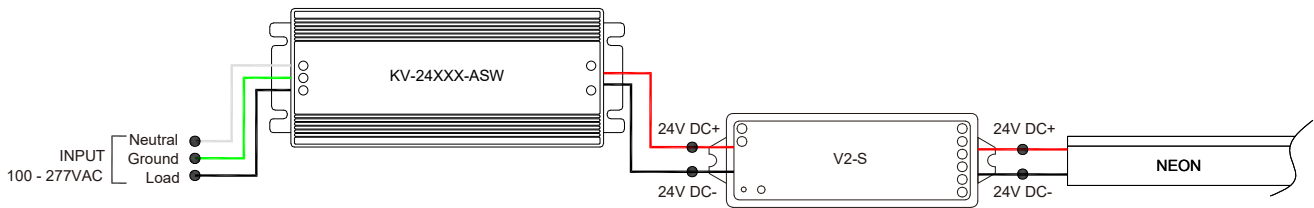
Non-dimmable

Code	Max Load	Input	Output	Class 2	With Junction Box	Environment	Size (L x W x H)
KV-24030-ASW	30W	100-277VAC	24V	Yes	No	Dry/Damp	6.1 x 2.1 x 0.8in. (155 x 54 x 20mm)
KV-24060-ASW	60W	100-277VAC	24V	Yes	No	Dry/Damp	7 x 2.4 x 0.9in. (178 x 61 x 24mm)
KV-24096-ASW	96W	100-277VAC	24V	Yes	No	Dry/Damp/Wet	9.1 x 2.8 x 1.7in. (230 x 70 x 43mm)

Controllers

Type	Code	Description	Size (L x W x H)
Controllers	V2-S & R7-1	2 Colors 2 Wires LED Strip Controller, compatible with R7-1 CCT remote, CE certified	44.72 x 1.69 x 1.06 in. (120 x 43 x 27 mm)

Wiring Diagram



LINIO NEON 0408X SV TW

Horizontal Bending - Tunable White

24V Voltage Drop & Maximum Wire Length Chart

Based on 24V voltage with a 3% voltage drop allowance. Indicates the maximum wire length from the power supply to the start of the run.

Total load	8AWG	10AWG	12AWG	14AWG	16AWG	18AWG	20AWG	22AWG
10W / 0.4A	1588ft (484.0m)	999ft (304.5m)	628ft (191.4m)	395ft (120.4m)	248ft (75.5m)	156ft (47.5m)	98ft (29.8m)	61ft (18.5m)
20W / 0.8A	794ft (242.0m)	499ft (152.1m)	314ft (95.7m)	197ft (60.0m)	124ft (37.8m)	78ft (23.7m)	49ft (14.9m)	30ft (9.1m)
30W / 1.3A	529ft (161.2m)	333ft (101.5m)	209ft (63.7m)	131ft (39.9m)	82ft (24.9m)	52ft (15.8m)	32ft (9.7m)	20ft (6.1m)
40W / 1.7A	397ft (121.0m)	249ft (75.9m)	157ft (47.8m)	98ft (29.8m)	62ft (18.9m)	39ft (11.8m)	24ft (7.3m)	15ft (4.5m)
50W / 2.1A	317ft (96.6m)	199ft (60.6m)	125ft (38.1m)	79ft (24.0m)	49ft (14.9m)	31ft (9.4m)	19ft (5.7m)	12ft (3.6m)
60W / 2.5A	264ft (80.4m)	166ft (50.6m)	104ft (31.7m)	65ft (19.8m)	41ft (12.5m)	26ft (7.9m)	16ft (4.8m)	10ft (3.0m)
70W / 2.9A	226ft (68.8m)	142ft (43.2m)	89ft (27.1m)	56ft (17.0m)	35ft (10.6m)	22ft (6.7m)	14ft (4.2m)	8ft (2.4m)
80W / 3.3A	198ft (60.3m)	124ft (37.8m)	78ft (23.7m)	49ft (14.9m)	31ft (9.4m)	19ft (5.7m)	12ft (3.6m)	7ft (2.1m)
90W / 3.8A	176ft (53.6m)	111ft (33.8m)	69ft (21.0m)	43ft (13.1m)	27ft (8.2m)	17ft (5.1m)	10ft (3.0m)	6ft (1.8m)
100W / 4.2A	158ft (48.1m)	99ft (30.1m)	62ft (18.9m)	39ft (11.8m)	24ft (7.3m)	15ft (4.5m)	9ft (2.7m)	6ft (1.8m)
110W / 4.6A	144ft (43.8m)	90ft (27.4m)	57ft (17.3m)	35ft (10.6m)	22ft (6.7m)	14ft (4.2m)	9ft (2.7m)	5ft (1.5m)
120W / 5.0A	132ft (40.2m)	83ft (25.3m)	52ft (15.8m)	32ft (9.7m)	20ft (6.1m)	13ft (3.9m)	8ft (2.4m)	5ft (1.5m)
130W / 5.4A	122ft (37.1m)	76ft (23.1m)	48ft (14.6m)	30ft (9.1m)	19ft (5.7m)	12ft (3.6m)	7ft (2.1m)	4ft (1.2m)
140W / 5.8A	113ft (34.4m)	71ft (21.6m)	44ft (13.4m)	28ft (8.5m)	17ft (5.1m)	11ft (3.3m)	7ft (2.1m)	4ft (1.2m)
150W / 6.3A	105ft (32.0m)	66ft (20.1m)	41ft (12.5m)	26ft (7.9m)	16ft (4.8m)	10ft (3.0m)	6ft (1.8m)	4ft (1.2m)
160W / 6.7A	99ft (30.1m)	62ft (18.9m)	39ft (11.8m)	24ft (7.3m)	15ft (4.5m)	9ft (2.7m)	6ft (1.8m)	3ft (0.9m)
170W / 7.1A	93ft (28.3m)	58ft (17.6m)	36ft (10.9m)	23ft (7.0m)	14ft (4.2m)	9ft (2.7m)	5ft (1.5m)	3ft (0.9m)
180W / 7.5A	88ft (26.8m)	55ft (16.7m)	34ft (10.3m)	22ft (6.7m)	13ft (3.9m)	8ft (2.4m)	5ft (1.5m)	3ft (0.9m)
190W / 7.9A	83ft (25.3m)	52ft (15.8m)	33ft (10.0m)	20ft (6.0m)	13ft (3.9m)	8ft (2.4m)	5ft (1.5m)	3ft (0.9m)
200W / 8.3A	79ft (24.0m)	49ft (14.9m)	31ft (9.4m)	19ft (5.7m)	12ft (3.6m)	7ft (2.1m)	4ft (1.2m)	3ft (0.9m)
210W / 8.8A	75ft (22.8m)	47ft (14.3m)	29ft (8.8m)	18ft (5.4m)	11ft (3.3m)	7ft (2.1m)	4ft (1.2m)	2ft (0.6m)
220W / 9.2A	72ft (21.9m)	45ft (13.7m)	28ft (8.5m)	18ft (5.4m)	11ft (3.3m)	7ft (2.1m)	4ft (1.2m)	2ft (0.6m)
230W / 9.6A	69ft (21.0m)	43ft (13.1m)	27ft (8.2m)	17ft (5.1m)	10ft (3.0m)	6ft (1.8m)	4ft (1.2m)	2ft (0.6m)
240W / 10.0A	66ft (20.1m)	41ft (12.5m)	26ft (7.9m)	16ft (4.8m)	10ft (3.0m)	6ft (1.8m)	4ft (1.2m)	2ft (0.6m)
250W / 10.4A	63ft (19.2m)	40ft (12.1m)	25ft (7.6m)	15ft (4.5m)	9ft (2.7m)	6ft (1.8m)	3ft (0.9m)	2ft (0.6m)