

Features

- 3-sides emitting design & Tunable white from 2700K to 5300K
- IP68 rated, ideal for outdoor uses, not for underwater project
- 5 years warranty

Applications

Gardens, parks, hotels, facades, pathways, outdoor steps, etc.

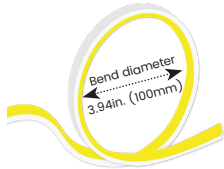
Date

Fixture type

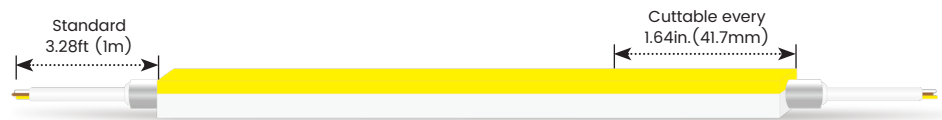
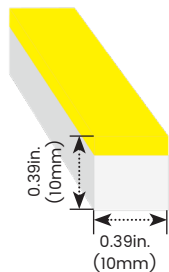
Project name

Project phase

Bending Directions & Diameters



Dimensions



Order Code

Model	Environment	Voltage	CCT	Power	End Cap	Left Feed Entry
LN1010X3STV	W8-Wet (IP68)	24V-DC24V	27K53K-2700K+5300K	3.5-3.54W/ft	FT Flush Translucent FO Flush Opaque	F Front B Bottom S Side C Closed OW Open wire 3.28ft (1m) MC Male connector with 11.8in. (300mm) cable FC Female connector with 11.8in. (300mm) cable NA Only for Closed Feed Entry

Assembly Builder

Assembly Builder

Right Feed Entry			Length	
F Front	OW Open wire	3.28ft (1m)	Max. nominal	32.8ft (10m)
B Bottom	MC Male connector with 11.8in. (300mm) cable		Increment	1.64in. (41.7mm)
S Side	FC Female connector with 11.8in. (300mm) cable			
C Closed	NA Only for Closed Feed Entry			

Mounting Order Code

Product Code
Please select on the Mounting Options page

*We will list the nearest actual manufacturing length on the quotation, based on your requested length.

Lumen Output (lm/ft)

CCT	3.54W/ft
■ 2700K	116
■ 5300K	119
■ 2700K+5300K	235

Max. Run for Class 2* 22.6ft (6.9m)
 Max. Run Supported Length 32.8ft (10m)

*Typically installations in USA and Canada comply with Class 2 requirements

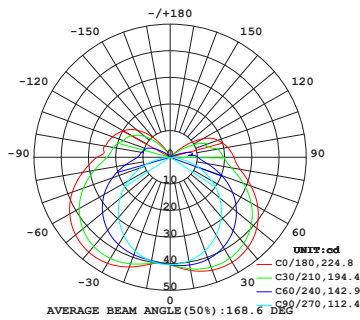
Technical Details

Efficacy	66lm/W @2700K+5300K 3.54W
CRI	Ra≥90
Beam Angle	160°(3-sides emitting)
LED MacAdam	3 steps
Average Life (L70B10)	>43,000 hours
Storage Temperature	-40°F~-149°F (-40°C~ 65°C)
Operating Temperature	-40°F~-149°F (-40°C~ 65°C)

Photometry

LN1010X3STV-W8-24V-27K53K-3.5-FT-F-OW-F-OW

LINIO NEON 1010X 3S TV TW, Vertical Bend, 2700K+5300K, 3.54W/ft

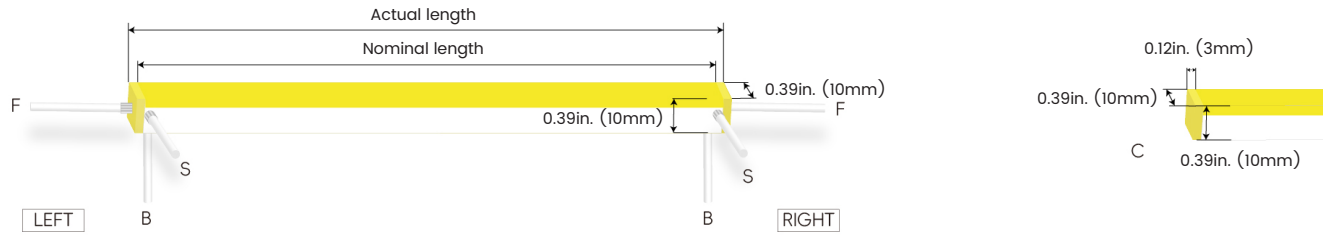


Zonal Lumen Summary

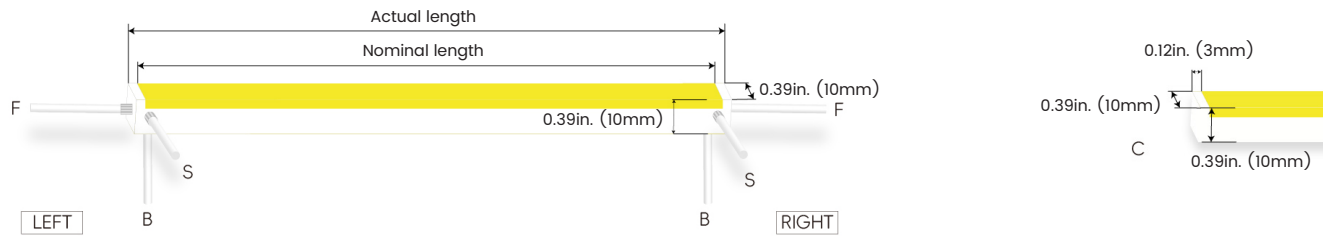
Zone	Lumen	% Fixture
0-30	34.6	14.7%
0-40	59.5	25.3%
0-60	117.9	50.1%
0-90	187.5	79.7%
0-180	235.3	100.0%

Feed Entry / End Cap Options

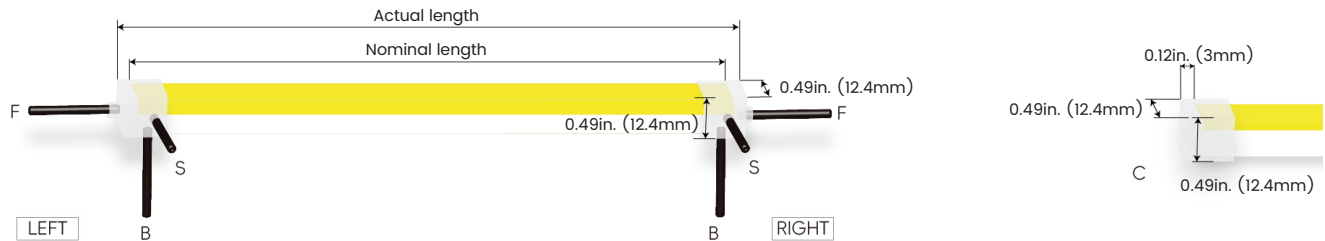
FT: Flush Translucent – IP68, factory-made only



FO: Flush Opaque – IP68, factory-made only



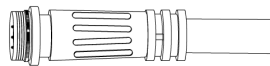
Silicone end cap – IP67, for field cuttable only



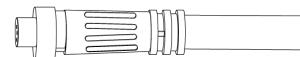
Connector Wire Options



OW: Open wire, **Dry only**
Standard 11.81in. (300mm), 20 AWG,
wire length customizable

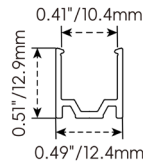


MC: Male connector, **Wet**
Standard 11.81in. (300mm), 20 AWG



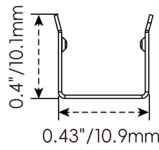
FC: Female connector, **Wet**
Standard 11.81in. (300mm), 20 AWG

Mounting Options



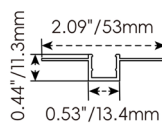
NF1010-SC

Name	Straight surface channel
Material	Aluminum
Standard Length	3.28ft (1m)



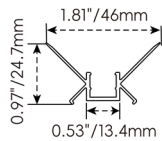
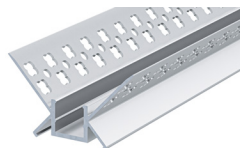
NF1010-BC

Name	Bendable surface channel
Material	Stainless Steel
Standard Length	3.28ft (1m)
Min. Bending Radius	1.97in. (50mm)
*Not suitable for upside-down installation	



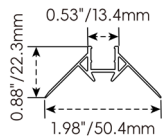
NF1010-MC

Name	Mud-in channel
Material	Aluminum
Standard Length	3.28ft (1m)



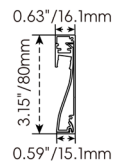
NF1010-IC

Name	Inside corner channel
Material	Aluminum
Standard Length	3.28ft (1m)



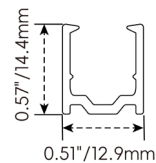
NF1010-OC

Name	Outside corner channel
Material	Aluminum
Standard Length	3.28ft (1m)



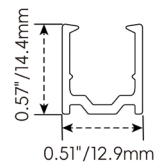
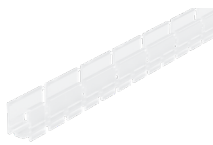
NF1010-SBC

Name	Skirting board channel
Material	Aluminum
Standard Length	3.28ft (1m)



NF1010-PC

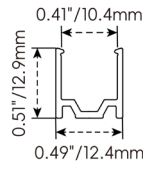
Name	PC channel
Material	PC
Standard Length	3.28ft (1m)



NF1010-BPC

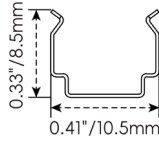
Name	Bendable PC channel
Material	PC
Standard Length	3.28ft (1m)

Mounting Options



NF1010-CL

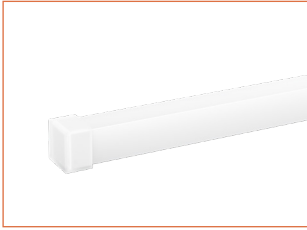
Name	Mounting clip
Material	Aluminum
Standard Length	0.98in. (25mm)



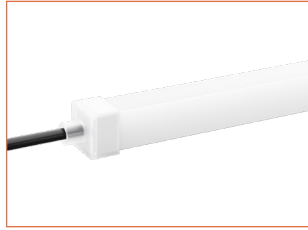
NF1010-CLS

Name	Mounting clip
Material	Stainless Steel
Standard Length	0.28in. (7mm)
*Not suitable for upside-down installation	

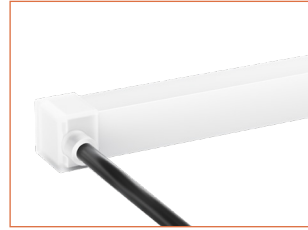
Silicone End Caps (Optional, purchase for extra)



NF1010-SEC-C
Silicone closed end cap



NF1010-SEC-F-3P
Silicone end cap front entry with
11.81in. (300mm) cable, 3 pin



NF1010-SEC-S-3P
Silicone end cap side entry with
11.81in. (300mm) cable, 3 pin



NF1010-SEC-B-3P
Silicone end cap bottom entry with
11.81in. (300mm) cable, 3 pin

Additional Accessories (Optional, purchase for extra)



MCW-3P-67
Male connector,
11.81in. (300mm) white cable,
3 pin, IP67, Wet, 20 AWG



FCW-3P-67
Female connector,
11.81in. (300mm) white cable,
3 pin, IP67, Wet, 20 AWG



MCB-3P-67
Male connector,
11.81in. (300mm) black cable,
3 pin, IP67, Wet, 20 AWG



FCB-3P-67
Female connector,
11.81in. (300mm) black cable,
3 pin, IP67, Wet, 20 AWG



ADJS
1 Adjustable Angle Scissors Set,
with 4 Spare Blades

Drivers

Non-dimmable

Code	Max Load	Input	Output	Class 2	With Junction Box	Environment	Size (L x W x H)
KV-24030-ASW	30W	100-277VAC	24V	Yes	No	Dry/Damp	6.1 x 2.1 x 0.8in. (155 x 54 x 20mm)
KV-24060-ASW	60W	100-277VAC	24V	Yes	No	Dry/Damp	7 x 2.4 x 0.9in. (178 x 61 x 24mm)
KV-24096-ASW	96W	100-277VAC	24V	Yes	No	Dry/Damp/Wet	9.1 x 2.8 x 1.7in. (230 x 70 x 43mm)

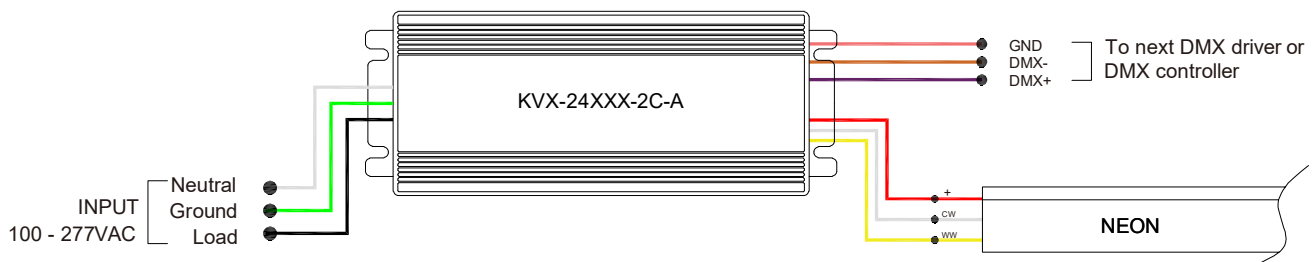
DMX-dimmable

Code	Max Load	Input	Output	Class 2	Environment	Size (L x W x H)
KVX-24096-2C-A	96W	100-277VAC	24V	Yes	Dry/Damp/Wet	9.05 x 3.07 x 0.98 in. (230 x 78 x 25 mm)
KVX-24150-2C-A	150W	100-277VAC	24V	No	Dry/Damp/Wet	10.90 x 3.07 x 0.98 in. (277 x 78 x 25 mm)
KVX-24200-2C-A	200W	100-277VAC	24V	No	Dry/Damp/Wet	10.90 x 3.07 x 0.98 in. (277 x 78 x 25 mm)
KVX-24300-2C-A	300W	100-277VAC	24V	No	Dry/Damp/Wet	11.85 x 3.07 x 0.98 in. (301 x 78 x 25 mm)

DMX-Decoders & Controllers Options

Type	Code	Description	Size (L x W x H)
DMX-Decoders	LT-903	3 channels output, up to 576W output power	4.80 x 4.33 x 1.46 in. (122 x 110 x 37 mm)
DMX-Decoders	LT-912	12 channels output, up to 1152W output power	7.09 x 4.80 x 1.54 in. (180 x 122 x 39 mm)
DMX-Decoders	LT-924	24 channels output, up to 1728W output power	11.81 x 4.80 x 1.54 in. (300 x 122 x 39 mm)
Controllers	DINA-DR micro	DMX 60 channels stand-alone controller with 10 scenes and USB programming	2.05 x 1.14 x 0.94 in. (52 x 29 x 24 mm)
Controllers	SLESA-U9	DMX 256 channels, USB connection, standalone mode with 1 area and 20 scenes	3.03 x 3.43 x 1.57 in. (77 x 87 x 40 mm)
Controllers	STICK-CW4	DMX 1024 channels controller with 36 scenes and 6 touch buttons	4.17 x 5.75 x 0.39 in. (106 x 146 x 10 mm)

Wiring Diagram



LINIO NEON 1010X 3S TV TW

Outdoor · Vertical Bending · Tunable White

24V Voltage Drop & Maximum Wire Length Chart

Based on 24V voltage with a 3% voltage drop allowance. Indicates the maximum wire length from the power supply to the start of the run.

Total load	8AWG	10AWG	12AWG	14AWG	16AWG	18AWG	20AWG	22AWG
10W / 0.4A	1588ft (484.0m)	999ft (304.5m)	628ft (191.4m)	395ft (120.4m)	248ft (75.5m)	156ft (47.5m)	98ft (29.8m)	61ft (18.5m)
20W / 0.8A	794ft (242.0m)	499ft (152.1m)	314ft (95.7m)	197ft (60.0m)	124ft (37.8m)	78ft (23.7m)	49ft (14.9m)	30ft (9.1m)
30W / 1.3A	529ft (161.2m)	333ft (101.5m)	209ft (63.7m)	131ft (39.9m)	82ft (24.9m)	52ft (15.8m)	32ft (9.7m)	20ft (6.1m)
40W / 1.7A	397ft (121.0m)	249ft (75.9m)	157ft (47.8m)	98ft (29.8m)	62ft (18.9m)	39ft (11.8m)	24ft (7.3m)	15ft (4.5m)
50W / 2.1A	317ft (96.6m)	199ft (60.6m)	125ft (38.1m)	79ft (24.0m)	49ft (14.9m)	31ft (9.4m)	19ft (5.7m)	12ft (3.6m)
60W / 2.5A	264ft (80.4m)	166ft (50.6m)	104ft (31.7m)	65ft (19.8m)	41ft (12.5m)	26ft (7.9m)	16ft (4.8m)	10ft (3.0m)
70W / 2.9A	226ft (68.8m)	142ft (43.2m)	89ft (27.1m)	56ft (17.0m)	35ft (10.6m)	22ft (6.7m)	14ft (4.2m)	8ft (2.4m)
80W / 3.3A	198ft (60.3m)	124ft (37.8m)	78ft (23.7m)	49ft (14.9m)	31ft (9.4m)	19ft (5.7m)	12ft (3.6m)	7ft (2.1m)
90W / 3.8A	176ft (53.6m)	111ft (33.8m)	69ft (21.0m)	43ft (13.1m)	27ft (8.2m)	17ft (5.1m)	10ft (3.0m)	6ft (1.8m)
100W / 4.2A	158ft (48.1m)	99ft (30.1m)	62ft (18.9m)	39ft (11.8m)	24ft (7.3m)	15ft (4.5m)	9ft (2.7m)	6ft (1.8m)
110W / 4.6A	144ft (43.8m)	90ft (27.4m)	57ft (17.3m)	35ft (10.6m)	22ft (6.7m)	14ft (4.2m)	9ft (2.7m)	5ft (1.5m)
120W / 5.0A	132ft (40.2m)	83ft (25.3m)	52ft (15.8m)	32ft (9.7m)	20ft (6.1m)	13ft (3.9m)	8ft (2.4m)	5ft (1.5m)
130W / 5.4A	122ft (37.1m)	76ft (23.1m)	48ft (14.6m)	30ft (9.1m)	19ft (5.7m)	12ft (3.6m)	7ft (2.1m)	4ft (1.2m)
140W / 5.8A	113ft (34.4m)	71ft (21.6m)	44ft (13.4m)	28ft (8.5m)	17ft (5.1m)	11ft (3.3m)	7ft (2.1m)	4ft (1.2m)
150W / 6.3A	105ft (32.0m)	66ft (20.1m)	41ft (12.5m)	26ft (7.9m)	16ft (4.8m)	10ft (3.0m)	6ft (1.8m)	4ft (1.2m)
160W / 6.7A	99ft (30.1m)	62ft (18.9m)	39ft (11.8m)	24ft (7.3m)	15ft (4.5m)	9ft (2.7m)	6ft (1.8m)	3ft (0.9m)
170W / 7.1A	93ft (28.3m)	58ft (17.6m)	36ft (10.9m)	23ft (7.0m)	14ft (4.2m)	9ft (2.7m)	5ft (1.5m)	3ft (0.9m)
180W / 7.5A	88ft (26.8m)	55ft (16.7m)	34ft (10.3m)	22ft (6.7m)	13ft (3.9m)	8ft (2.4m)	5ft (1.5m)	3ft (0.9m)
190W / 7.9A	83ft (25.3m)	52ft (15.8m)	33ft (10.0m)	20ft (6.0m)	13ft (3.9m)	8ft (2.4m)	5ft (1.5m)	3ft (0.9m)
200W / 8.3A	79ft (24.0m)	49ft (14.9m)	31ft (9.4m)	19ft (5.7m)	12ft (3.6m)	7ft (2.1m)	4ft (1.2m)	3ft (0.9m)
210W / 8.8A	75ft (22.8m)	47ft (14.3m)	29ft (8.8m)	18ft (5.4m)	11ft (3.3m)	7ft (2.1m)	4ft (1.2m)	2ft (0.6m)
220W / 9.2A	72ft (21.9m)	45ft (13.7m)	28ft (8.5m)	18ft (5.4m)	11ft (3.3m)	7ft (2.1m)	4ft (1.2m)	2ft (0.6m)
230W / 9.6A	69ft (21.0m)	43ft (13.1m)	27ft (8.2m)	17ft (5.1m)	10ft (3.0m)	6ft (1.8m)	4ft (1.2m)	2ft (0.6m)
240W / 10.0A	66ft (20.1m)	41ft (12.5m)	26ft (7.9m)	16ft (4.8m)	10ft (3.0m)	6ft (1.8m)	4ft (1.2m)	2ft (0.6m)
250W / 10.4A	63ft (19.2m)	40ft (12.1m)	25ft (7.6m)	15ft (4.5m)	9ft (2.7m)	6ft (1.8m)	3ft (0.9m)	2ft (0.6m)