

### Features

- 3-sides emitting design & Tunable white from 2700K to 5300K
- IP68 rated, ideal for outdoor uses, not for underwater project
- 5 years warranty

### Applications

Gardens, parks, hotels, facades, pathways, outdoor steps, etc.

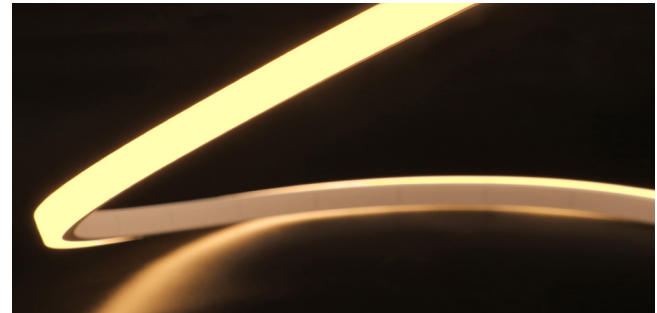
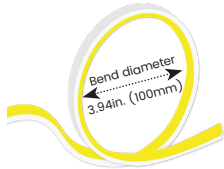
Date

Fixture type

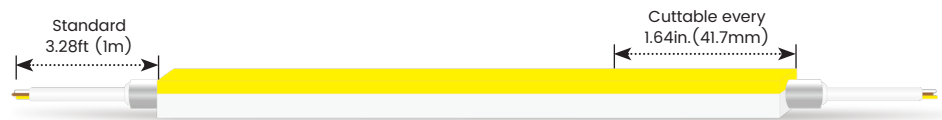
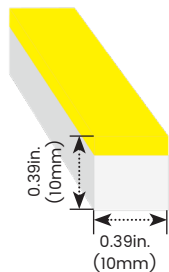
Project name

Project phase

### Bending Directions & Diameters



### Dimensions



### Order Code

Model	Environment	Voltage	CCT	Power	End Cap	Left Feed Entry
LN1010X3STV	W8-Wet (IP68)	24V-DC24V	27K53K-2700K+5300K	3.5-3.54W/ft	FT Flush Translucent FO Flush Opaque	<b>F</b> Front <b>B</b> Bottom <b>S</b> Side <b>C</b> Closed <b>OW</b> Open wire 3.28ft (1m) <b>MC</b> Male connector with 11.8in. (300mm) cable <b>FC</b> Female connector with 11.8in. (300mm) cable <b>NA</b> Only for Closed Feed Entry

### Assembly Builder

### Assembly Builder

Right Feed Entry			Length	
<b>F</b> Front	<b>OW</b> Open wire	3.28ft (1m)	<b>Max. nominal</b>	32.8ft (10m)
<b>B</b> Bottom	<b>MC</b> Male connector with 11.8in. (300mm) cable		<b>Increment</b>	1.64in. (41.7mm)
<b>S</b> Side	<b>FC</b> Female connector with 11.8in. (300mm) cable			
<b>C</b> Closed	<b>NA</b> Only for Closed Feed Entry			

### Mounting Order Code

Product Code
Please select on the Mounting Options page

\*We will list the nearest actual manufacturing length on the quotation, based on your requested length.

### Lumen Output (lm/ft)

CCT	3.54W/ft
■ 2700K	116
■ 5300K	119
■ 2700K+5300K	235

Max. Run for Class 2\* 22.6ft (6.9m)  
 Max. Run Supported Length 32.8ft (10m)

\*Typically installations in USA and Canada comply with Class 2 requirements

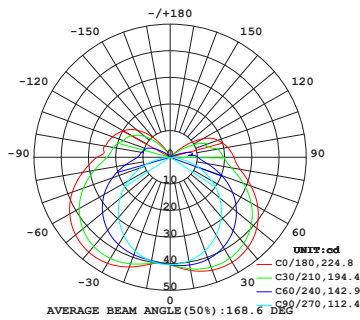
### Technical Details

Efficacy	66lm/W @2700K+5300K 3.54W
CRI	Ra≥90
Beam Angle	160°(3-sides emitting)
LED MacAdam	3 steps
Average Life (L70B10)	>43,000 hours
Storage Temperature	-40°F~-149°F (-40°C~ 65°C)
Operating Temperature	-40°F~-149°F (-40°C~ 65°C)

### Photometry

LN1010X3STV-W8-24V-27K53K-3.5-FT-F-OW-F-OW

LINIO NEON 1010X 3S TV TW, Vertical Bend, 2700K+5300K, 3.54W/ft

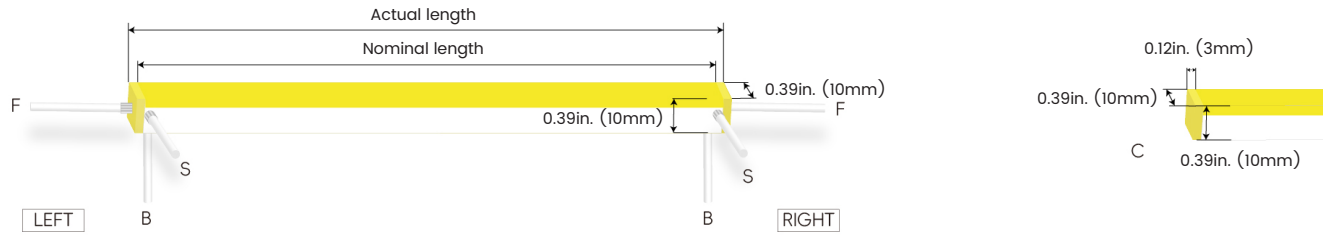


#### Zonal Lumen Summary

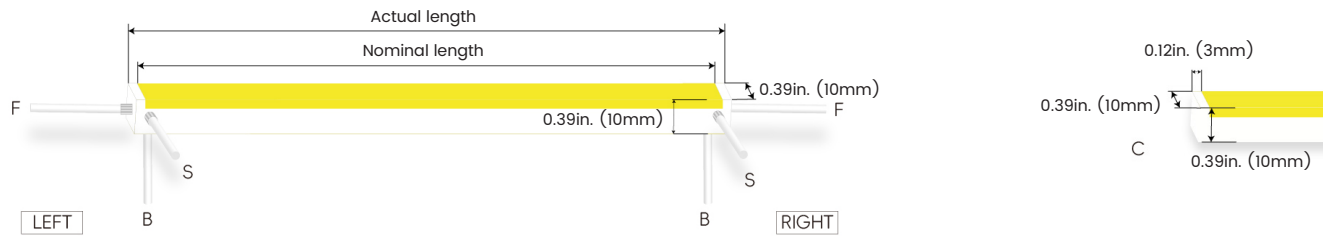
Zone	Lumen	% Fixture
0-30	34.6	14.7%
0-40	59.5	25.3%
0-60	117.9	50.1%
0-90	187.5	79.7%
0-180	235.3	100.0%

### Feed Entry / End Cap Options

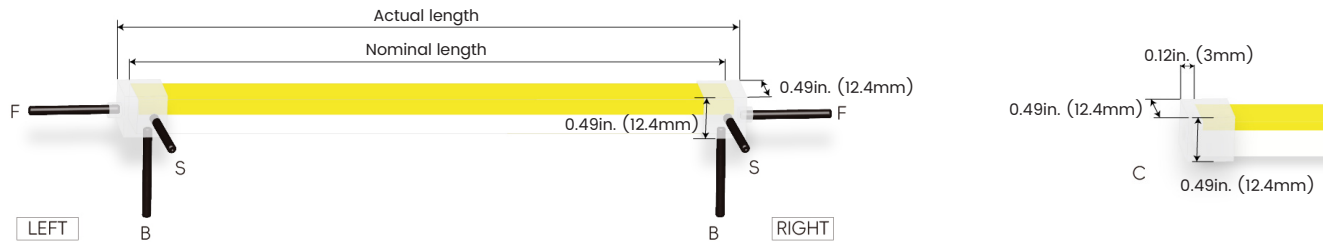
#### FT: Flush Translucent – IP68, factory-made only



#### FO: Flush Opaque – IP68, factory-made only



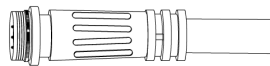
#### Silicone end cap – IP67, for field cuttable only



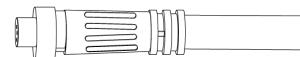
### Connector Wire Options



**OW:** Open wire, **Dry only**  
Standard 11.81in. (300mm), 20 AWG,  
wire length customizable

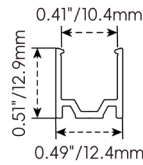


**MC:** Male connector, **Wet**  
Standard 11.81in. (300mm), 20 AWG



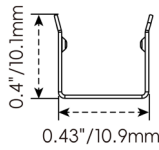
**FC:** Female connector, **Wet**  
Standard 11.81in. (300mm), 20 AWG

### Mounting Options



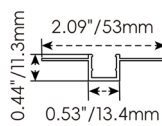
#### NF1010-SC

Name	Straight surface channel
Material	Aluminum
Standard Length	3.28ft (1m)



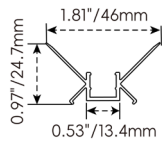
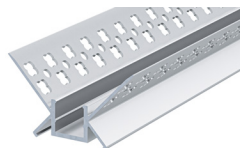
#### NF1010-BC

Name	Bendable surface channel
Material	Stainless Steel
Standard Length	3.28ft (1m)
Min. Bending Radius	1.97in. (50mm)
*Not suitable for upside-down installation	



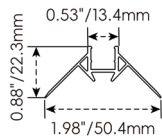
#### NF1010-MC

Name	Mud-in channel
Material	Aluminum
Standard Length	3.28ft (1m)



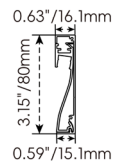
#### NF1010-IC

Name	Inside corner channel
Material	Aluminum
Standard Length	3.28ft (1m)



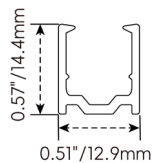
#### NF1010-OC

Name	Outside corner channel
Material	Aluminum
Standard Length	3.28ft (1m)



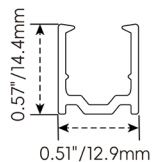
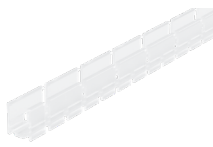
#### NF1010-SBC

Name	Skirting board channel
Material	Aluminum
Standard Length	3.28ft (1m)



#### NF1010-PC

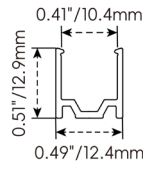
Name	PC channel
Material	PC
Standard Length	3.28ft (1m)



#### NF1010-BPC

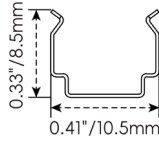
Name	Bendable PC channel
Material	PC
Standard Length	3.28ft (1m)

**Mounting Options**



**NF1010-CL**

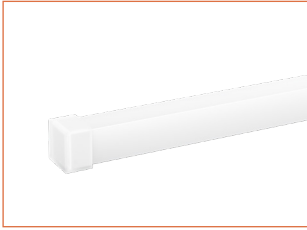
Name	Mounting clip
Material	Aluminum
Standard Length	0.98in. (25mm)



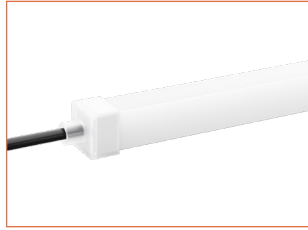
**NF1010-CLS**

Name	Mounting clip
Material	Stainless Steel
Standard Length	0.28in. (7mm)
<b>*Not suitable for upside-down installation</b>	

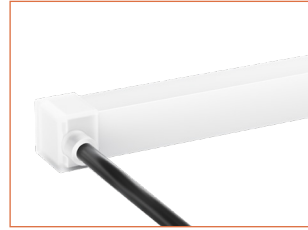
### Silicone End Caps (Optional, purchase for extra)



**NF1010-SEC-C**  
Silicone closed end cap



**NF1010-SEC-F-3P**  
Silicone end cap front entry with 11.81in. (300mm) cable, 3 pin



**NF1010-SEC-S-3P**  
Silicone end cap side entry with 11.81in. (300mm) cable, 3 pin



**NF1010-SEC-B-3P**  
Silicone end cap bottom entry with 11.81in. (300mm) cable, 3 pin

### Additional Accessories (Optional, purchase for extra)



**MCW-3P-67**  
Male connector, 11.81in. (300mm) white cable, 3 pin, IP67, Wet, 20 AWG



**FCW-3P-67**  
Female connector, 11.81in. (300mm) white cable, 3 pin, IP67, Wet, 20 AWG



**MCB-3P-67**  
Male connector, 11.81in. (300mm) black cable, 3 pin, IP67, Wet, 20 AWG



**FCB-3P-67**  
Female connector, 11.81in. (300mm) black cable, 3 pin, IP67, Wet, 20 AWG



**ADJS**  
1 Adjustable Angle Scissors Set, with 4 Spare Blades

### Drivers

#### Non-dimmable

Code	Max Load	Input	Output	Class 2	With Junction Box	Environment	Size (L x W x H)
KV-24030-ASW	30W	100-277VAC	24V	Yes	No	Dry/Damp	6.1 x 2.1 x 0.8in. (155 x 54 x 20mm)
KV-24060-ASW	60W	100-277VAC	24V	Yes	No	Dry/Damp	7 x 2.4 x 0.9in. (178 x 61 x 24mm)
KV-24096-ASW	96W	100-277VAC	24V	Yes	No	Dry/Damp/Wet	9.1 x 2.8 x 1.7in. (230 x 70 x 43mm)

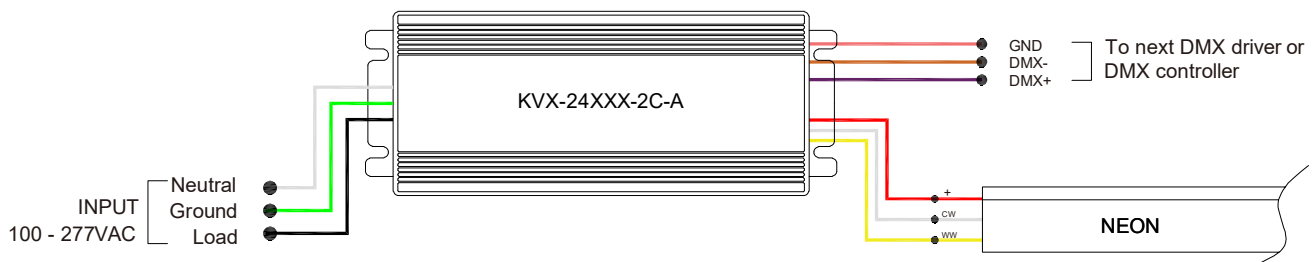
#### DMX-dimmable

Code	Max Load	Input	Output	Class 2	Environment	Size (L x W x H)
KVX-24096-2C-A	96W	100-277VAC	24V	Yes	Dry/Damp/Wet	9.05 x 3.07 x 0.98 in. (230 x 78 x 25 mm)
KVX-24150-2C-A	150W	100-277VAC	24V	No	Dry/Damp/Wet	10.90 x 3.07 x 0.98 in. (277 x 78 x 25 mm)
KVX-24200-2C-A	200W	100-277VAC	24V	No	Dry/Damp/Wet	10.90 x 3.07 x 0.98 in. (277 x 78 x 25 mm)
KVX-24300-2C-A	300W	100-277VAC	24V	No	Dry/Damp/Wet	11.85 x 3.07 x 0.98 in. (301 x 78 x 25 mm)

#### DMX-Decoders & Controllers Options

Type	Code	Description	Size (L x W x H)
DMX-Decoders	LT-903	3 channels output, up to 576W output power	4.80 x 4.33 x 1.46 in. (122 x 110 x 37 mm)
DMX-Decoders	LT-912	12 channels output, up to 1152W output power	7.09 x 4.80 x 1.54 in. (180 x 122 x 39 mm)
DMX-Decoders	LT-924	24 channels output, up to 1728W output power	11.81 x 4.80 x 1.54 in. (300 x 122 x 39 mm)
Controllers	DINA-DR micro	DMX 60 channels stand-alone controller with 10 scenes and USB programming	2.05 x 1.14 x 0.94 in. (52 x 29 x 24 mm)
Controllers	SLESA-U9	DMX 256 channels, USB connection, standalone mode with 1 area and 20 scenes	3.03 x 3.43 x 1.57 in. (77 x 87 x 40 mm)
Controllers	STICK-CW4	DMX 1024 channels controller with 36 scenes and 6 touch buttons	4.17 x 5.75 x 0.39 in. (106 x 146 x 10 mm)

### Wiring Diagram



**LINIO NEON 1010X 3S TV TW**

Outdoor · Vertical Bending · Tunable White

**24V Voltage Drop & Maximum Wire Length Chart**

Based on 24V voltage with a 3% voltage drop allowance. Indicates the maximum wire length from the power supply to the start of the run.

Total load	8AWG	10AWG	12AWG	14AWG	16AWG	18AWG	20AWG	22AWG
10W / 0.4A	1588ft (484.0m)	999ft (304.5m)	628ft (191.4m)	395ft (120.4m)	248ft (75.5m)	156ft (47.5m)	98ft (29.8m)	61ft (18.5m)
20W / 0.8A	794ft (242.0m)	499ft (152.1m)	314ft (95.7m)	197ft (60.0m)	124ft (37.8m)	78ft (23.7m)	49ft (14.9m)	30ft (9.1m)
30W / 1.3A	529ft (161.2m)	333ft (101.5m)	209ft (63.7m)	131ft (39.9m)	82ft (24.9m)	52ft (15.8m)	32ft (9.7m)	20ft (6.1m)
40W / 1.7A	397ft (121.0m)	249ft (75.9m)	157ft (47.8m)	98ft (29.8m)	62ft (18.9m)	39ft (11.8m)	24ft (7.3m)	15ft (4.5m)
50W / 2.1A	317ft (96.6m)	199ft (60.6m)	125ft (38.1m)	79ft (24.0m)	49ft (14.9m)	31ft (9.4m)	19ft (5.7m)	12ft (3.6m)
60W / 2.5A	264ft (80.4m)	166ft (50.6m)	104ft (31.7m)	65ft (19.8m)	41ft (12.5m)	26ft (7.9m)	16ft (4.8m)	10ft (3.0m)
70W / 2.9A	226ft (68.8m)	142ft (43.2m)	89ft (27.1m)	56ft (17.0m)	35ft (10.6m)	22ft (6.7m)	14ft (4.2m)	8ft (2.4m)
80W / 3.3A	198ft (60.3m)	124ft (37.8m)	78ft (23.7m)	49ft (14.9m)	31ft (9.4m)	19ft (5.7m)	12ft (3.6m)	7ft (2.1m)
90W / 3.8A	176ft (53.6m)	111ft (33.8m)	69ft (21.0m)	43ft (13.1m)	27ft (8.2m)	17ft (5.1m)	10ft (3.0m)	6ft (1.8m)
100W / 4.2A	158ft (48.1m)	99ft (30.1m)	62ft (18.9m)	39ft (11.8m)	24ft (7.3m)	15ft (4.5m)	9ft (2.7m)	6ft (1.8m)
110W / 4.6A	144ft (43.8m)	90ft (27.4m)	57ft (17.3m)	35ft (10.6m)	22ft (6.7m)	14ft (4.2m)	9ft (2.7m)	5ft (1.5m)
120W / 5.0A	132ft (40.2m)	83ft (25.3m)	52ft (15.8m)	32ft (9.7m)	20ft (6.1m)	13ft (3.9m)	8ft (2.4m)	5ft (1.5m)
130W / 5.4A	122ft (37.1m)	76ft (23.1m)	48ft (14.6m)	30ft (9.1m)	19ft (5.7m)	12ft (3.6m)	7ft (2.1m)	4ft (1.2m)
140W / 5.8A	113ft (34.4m)	71ft (21.6m)	44ft (13.4m)	28ft (8.5m)	17ft (5.1m)	11ft (3.3m)	7ft (2.1m)	4ft (1.2m)
150W / 6.3A	105ft (32.0m)	66ft (20.1m)	41ft (12.5m)	26ft (7.9m)	16ft (4.8m)	10ft (3.0m)	6ft (1.8m)	4ft (1.2m)
160W / 6.7A	99ft (30.1m)	62ft (18.9m)	39ft (11.8m)	24ft (7.3m)	15ft (4.5m)	9ft (2.7m)	6ft (1.8m)	3ft (0.9m)
170W / 7.1A	93ft (28.3m)	58ft (17.6m)	36ft (10.9m)	23ft (7.0m)	14ft (4.2m)	9ft (2.7m)	5ft (1.5m)	3ft (0.9m)
180W / 7.5A	88ft (26.8m)	55ft (16.7m)	34ft (10.3m)	22ft (6.7m)	13ft (3.9m)	8ft (2.4m)	5ft (1.5m)	3ft (0.9m)
190W / 7.9A	83ft (25.3m)	52ft (15.8m)	33ft (10.0m)	20ft (6.0m)	13ft (3.9m)	8ft (2.4m)	5ft (1.5m)	3ft (0.9m)
200W / 8.3A	79ft (24.0m)	49ft (14.9m)	31ft (9.4m)	19ft (5.7m)	12ft (3.6m)	7ft (2.1m)	4ft (1.2m)	3ft (0.9m)
210W / 8.8A	75ft (22.8m)	47ft (14.3m)	29ft (8.8m)	18ft (5.4m)	11ft (3.3m)	7ft (2.1m)	4ft (1.2m)	2ft (0.6m)
220W / 9.2A	72ft (21.9m)	45ft (13.7m)	28ft (8.5m)	18ft (5.4m)	11ft (3.3m)	7ft (2.1m)	4ft (1.2m)	2ft (0.6m)
230W / 9.6A	69ft (21.0m)	43ft (13.1m)	27ft (8.2m)	17ft (5.1m)	10ft (3.0m)	6ft (1.8m)	4ft (1.2m)	2ft (0.6m)
240W / 10.0A	66ft (20.1m)	41ft (12.5m)	26ft (7.9m)	16ft (4.8m)	10ft (3.0m)	6ft (1.8m)	4ft (1.2m)	2ft (0.6m)
250W / 10.4A	63ft (19.2m)	40ft (12.1m)	25ft (7.6m)	15ft (4.5m)	9ft (2.7m)	6ft (1.8m)	3ft (0.9m)	2ft (0.6m)