

Beamever

LINIO NEON 1010X 3S TV

Designer's Custom Playground

Vertical Bending · Static White

Features

- 3-sides emitting design offers smooth diffusion at direct view
- IP68 rated, ideal for outdoor uses, not for underwater project
- 5 years warranty

Applications

Gardens, parks, hotels, facades, pathways, outdoor steps, etc.

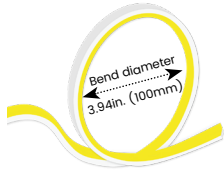
Date

Fixture type

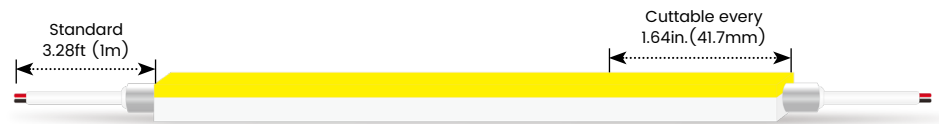
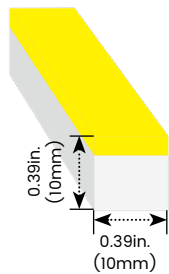
Project name

Project phase

Bending Directions & Diameters



Dimensions



Order Code

Assembly Builder

| Model | Environment | Voltage | CCT | Power | End Cap | Left Feed Entry | | | | |
|-------------|---------------|-----------|-----------|--------------|----------------------|-----------------|----|---|--|--|
| LN1010X3STV | W8-Wet (IP68) | 24V-DC24V | 22K-2200K | 3.4-3.35W/ft | FT Flush Translucent | F Front | OW | Open wire 3.28ft (1m) | | |
| | | | 27K-2700K | | FO Flush Opaque | B Bottom | MC | Male connector with 11.81in. (300mm) cable | | |
| | | | 30K-3000K | | | S Side | FC | Female connector with 11.81in. (300mm)cable | | |
| | | | 35K-3500K | | | C Closed | NA | Only for Closed Feed Entry | | |
| | | | 40K-4000K | | | | | | | |
| | | | 53K-5300K | | | | | | | |

Assembly Builder

Mounting Order Code

| Right Feed Entry | | | | Length | |
|------------------|--------|----|---|--------------|------------------|
| F | Front | OW | Open wire 3.28ft (1m) | Max. nominal | 42.7ft (13m) |
| B | Bottom | MC | Male connector with 11.81in. (300mm) cable | Increment | 1.64in. (41.7mm) |
| S | Side | FC | Female connector with 11.81in. (300mm)cable | | |
| C | Closed | NA | Only for Closed Feed Entry | | |

| Product Code |
|--|
| Please select on the Mounting Options page |

*We will list the nearest actual manufacturing length on the quotation, based on your requested length.

Lumen Output (lm/ft)

| CCT | 3.35W/ft |
|---------------------------|---------------|
| 2200K | 253 |
| 2700K | 274 |
| 3000K | 282 |
| 3500K | 287 |
| 4000K | 290 |
| 5300K | 277 |
| Max. Run for Class 2* | 23.9ft (7.3m) |
| Max. Run Supported Length | 42.7ft (13m) |

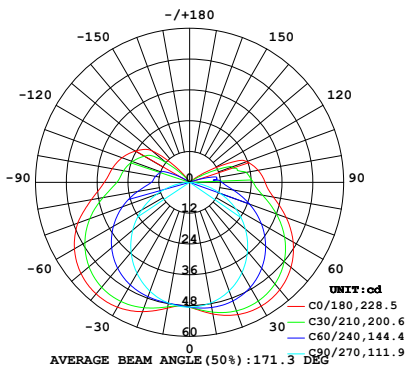
*Typically installations in USA and Canada comply with Class 2 requirements

Technical Details

| | |
|-----------------------|----------------------------|
| Efficacy | 84lm/W @3000K 3.35W |
| CRI | Ra≥90 |
| Beam Angle | 160°(3-sides emitting) |
| LED MacAdam | 2 steps |
| Average Life (L80B10) | >52,000 hours |
| Storage Temperature | -40°F~-149°F (-40°C~ 65°C) |
| Operating Temperature | -40°F~-149°F (-40°C~ 65°C) |

Photometry

LN1010X3STV-W8-24V-30K-3.4-FT-F-OW-F-OW
 LINIO NEON 1010X 3S TV, Vertical Bend, 3000K, 3.35W/ft

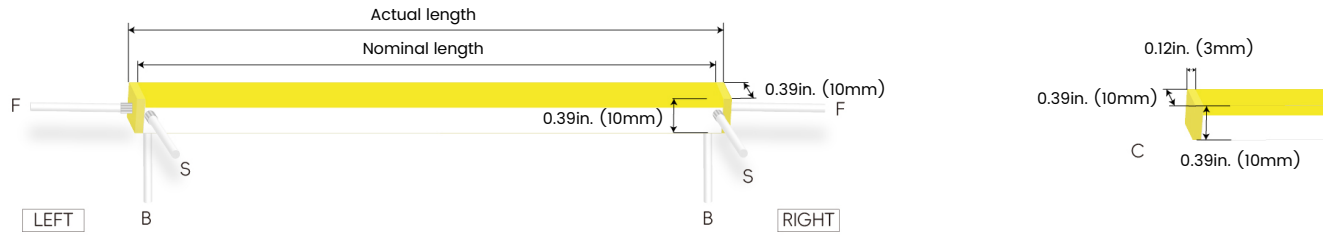


Zonal Lumen Summary

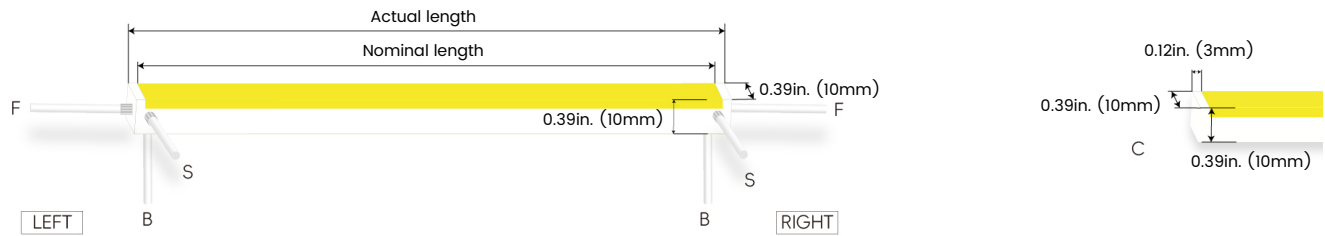
| Zone | Lumen | % Fixture |
|-------|-------|-----------|
| 0-30 | 41.89 | 14.80% |
| 0-40 | 72.3 | 25.6% |
| 0-60 | 143.5 | 50.8% |
| 0-90 | 228.6 | 81.0% |
| 0-180 | 282.3 | 100.0% |

Feed Entry / End Cap Options

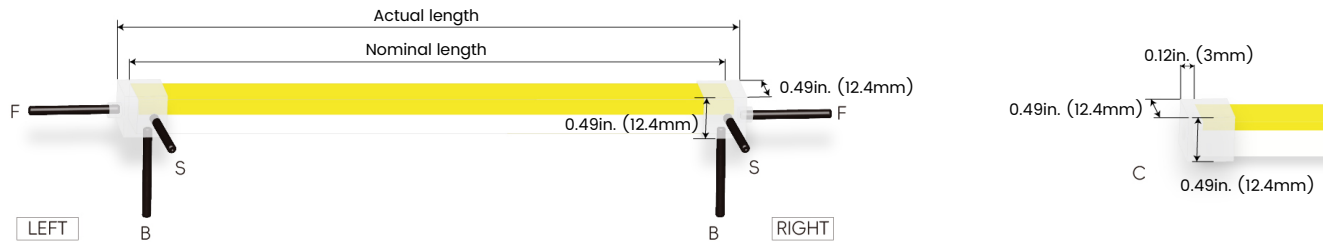
FT: Flush Translucent – IP68, factory-made only



FO: Flush Opaque – IP68, factory-made only



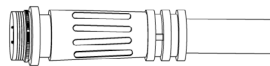
Silicone end cap – IP67, for field cuttable only



Connector Wire Options



OW: Open wire, **Dry only**
Standard 11.81in. (300mm), 20 AWG,
wire length customizable

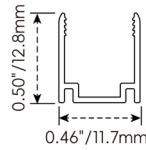
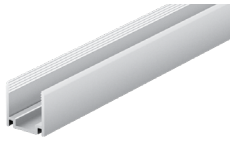


MC: Male connector, **Wet**
Standard 11.81in. (300mm), 20 AWG



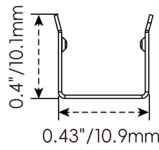
FC: Female connector, **Wet**
Standard 11.81in. (300mm), 20 AWG

Mounting Options



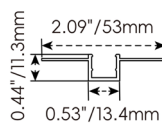
NF1010-SC

| | |
|-----------------|--------------------------|
| Name | Straight surface channel |
| Material | Aluminum |
| Standard Length | 3.28ft (1m) |



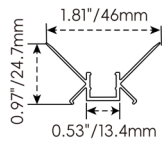
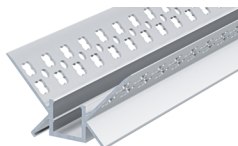
NF1010-BC

| | |
|--|--------------------------|
| Name | Bendable surface channel |
| Material | Stainless Steel |
| Standard Length | 3.28ft (1m) |
| Min. Bending Radius | 1.97in. (50mm) |
| *Not suitable for upside-down installation | |



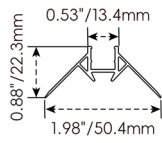
NF1010-MC

| | |
|-----------------|----------------|
| Name | Mud-in channel |
| Material | Aluminum |
| Standard Length | 3.28ft (1m) |



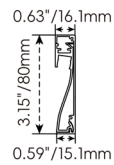
NF1010-IC

| | |
|-----------------|-----------------------|
| Name | Inside corner channel |
| Material | Aluminum |
| Standard Length | 3.28ft (1m) |



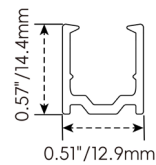
NF1010-OC

| | |
|-----------------|------------------------|
| Name | Outside corner channel |
| Material | Aluminum |
| Standard Length | 3.28ft (1m) |



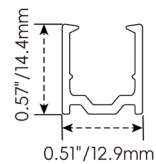
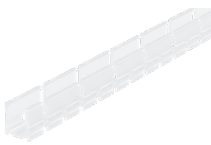
NF1010-SBC

| | |
|-----------------|------------------------|
| Name | Skirting board channel |
| Material | Aluminum |
| Standard Length | 3.28ft (1m) |



NF1010-PC

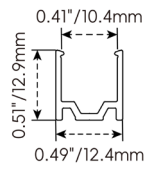
| | |
|-----------------|-------------|
| Name | PC channel |
| Material | PC |
| Standard Length | 3.28ft (1m) |



NF1010-BPC

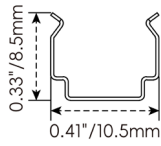
| | |
|-----------------|---------------------|
| Name | Bendable PC channel |
| Material | PC |
| Standard Length | 3.28ft (1m) |

Mounting Options



NF1010-CL

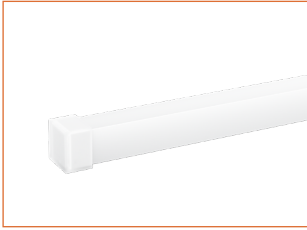
| | |
|------------------------|----------------|
| Name | Mounting clip |
| Material | Aluminum |
| Standard Length | 0.98in. (25mm) |



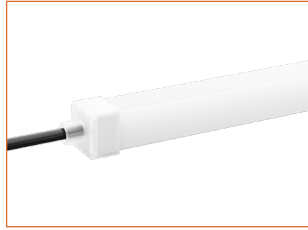
NF1010-CLS

| | |
|---|-----------------|
| Name | Mounting clip |
| Material | Stainless Steel |
| Standard Length | 0.28in. (7mm) |
| *Not suitable for upside-down installation | |

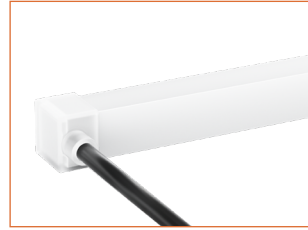
Silicone End Caps (Optional, purchase for extra)



NF1010-SEC-C
Silicone closed end cap



NF1010-SEC-F-2P
Silicone end cap front entry with 11.8in. (300mm) cable, 2 pin



NF1010-SEC-S-2P
Silicone end cap side entry with 11.8in. (300mm) cable, 2 pin



NF1010-SEC-B-2P
Silicone end cap bottom entry with 11.8in. (300mm) cable, 2 pin

Additional Accessories (Optional, purchase for extra)



MCW-2P-67
Male connector, 11.8in. (300mm) white cable, 2 pin, IP67, Wet, 20 AWG



FCW-2P-67
Female connector, 11.8in. (300mm) white cable, 2 pin, IP67, Wet, 20 AWG



MCB-2P-67
Male connector, 11.8in. (300mm) black cable, 2 pin, IP67, Wet, 20 AWG



FCB-2P-67
Female connector, 11.8in. (300mm) black cable, 2 pin, IP67, Wet, 20 AWG



ADJS
1 Adjustable Angle Scissors Set, with 4 Spare Blades

Drivers

Non-dimmable

| Code | Max Load | Input | Output | Class 2 | With Junction Box | Environment | Size (L x W x H) |
|--------------|----------|------------|--------|---------|-------------------|--------------|--------------------------------------|
| KV-24030-ASW | 30W | 100-277VAC | 24V | Yes | No | Dry/Damp | 6.1 x 2.1 x 0.8in. (155 x 54 x 20mm) |
| KV-24060-ASW | 60W | 100-277VAC | 24V | Yes | No | Dry/Damp | 7 x 2.4 x 0.9in. (178 x 61 x 24mm) |
| KV-24096-ASW | 96W | 100-277VAC | 24V | Yes | No | Dry/Damp/Wet | 9.1 x 2.8 x 1.7in. (230 x 70 x 43mm) |

Phase cut/Triac-dimmable

| Code | Max Load | Input | Output | Class 2 | With Junction Box | Environment | Size (L x W x H) |
|----------------|--------------|------------|--------|---------|-------------------|--------------|--|
| KVF-24030-TDW | 30W | 100-277VAC | 24V | Yes | No | Dry/Damp | 6.1 x 2.1 x 0.8in. (155 x 54 x 20mm) |
| KVF-24060-TDW | 60W | 100-277VAC | 24V | Yes | No | Dry/Damp | 7 x 2.4 x 0.9in. (178 x 61 x 24mm) |
| KVF-24096-TDW | 96W | 100-277VAC | 24V | Yes | No | Dry/Damp/Wet | 9.1 x 2.8 x 1.7in. (230 x 70 x 43mm) |
| KVF-24030-TDWJ | 30W | 100-277VAC | 24V | Yes | Yes | Dry/Damp | 6.5 x 3.6 x 1in. (165 x 92 x 26mm) |
| KVF-24060-TDWJ | 60W | 100-277VAC | 24V | Yes | Yes | Dry/Damp | 7.4 x 3.6 x 1in. (188 x 92 x 26mm) |
| KVF-24096-TDWJ | 96W | 100-277VAC | 24V | Yes | Yes | Dry/Damp | 8.7 x 3.7 x 1.6in. (220 x 93 x 41mm) |
| KVF-24192-TDWJ | 192W (96Wx2) | 100-277VAC | 24V | Yes | Yes | Dry/Damp | 10.9 x 4.3 x 1.8in. (278 x 110 x 45mm) |
| KVF-24288-TDWJ | 288W (96Wx3) | 100-277VAC | 24V | Yes | Yes | Dry/Damp | 11.9 x 4.3 x 1.8in. (301 x 110 x 45mm) |
| KVF-24384-TDWJ | 384W (96Wx4) | 100-277VAC | 24V | Yes | Yes | Dry/Damp | 12.7 x 5.5 x 1.9in. (323 x 140 x 48mm) |

4 in 1-dimmable (0-10V/1-10V/Potentiometer/10V PWM)

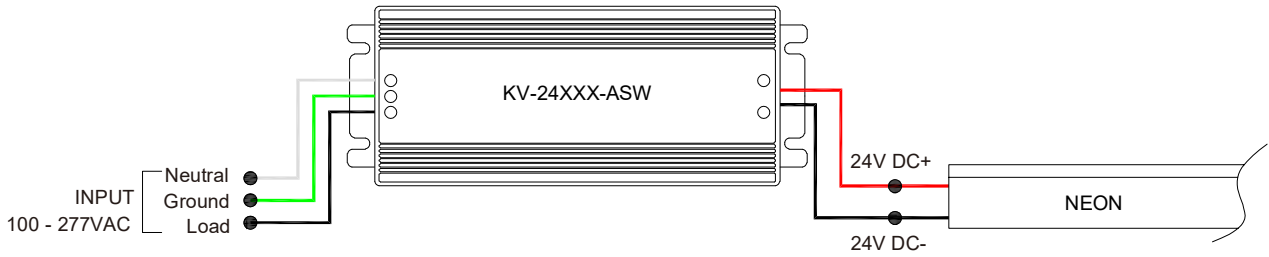
| Code | Max Load | Input | Output | Class 2 | With Junction Box | Environment | Size (L x W x H) |
|----------------|--------------|------------|--------|---------|-------------------|--------------|--|
| KVD-24030-DIM | 30W | 100-277VAC | 24V | Yes | No | Dry/Damp | 6.1 x 2.1 x 0.8in. (155 x 54 x 20mm) |
| KVD-24060-DIM | 60W | 100-277VAC | 24V | Yes | No | Dry/Damp | 7 x 2.4 x 0.9in. (178 x 61 x 24mm) |
| KVD-24096-DIM | 96W | 100-277VAC | 24V | Yes | No | Dry/Damp/Wet | 9.1 x 2.8 x 1.7in. (230 x 70 x 43mm) |
| KVD-24030-DIMJ | 30W | 100-277VAC | 24V | Yes | Yes | Dry/Damp | 6.5 x 3.6 x 1in. (165 x 92 x 26mm) |
| KVD-24060-DIMJ | 60W | 100-277VAC | 24V | Yes | Yes | Dry/Damp | 7.4 x 3.6 x 1in. (188 x 92 x 26mm) |
| KVD-24096-DIMJ | 96W | 100-277VAC | 24V | Yes | Yes | Dry/Damp | 8.7 x 3.7 x 1.6in. (220 x 93 x 41mm) |
| KVD-24192-DIMJ | 192W (96Wx2) | 100-277VAC | 24V | Yes | Yes | Dry/Damp | 10.9 x 4.3 x 1.8in. (278 x 110 x 45mm) |
| KVD-24288-DIMJ | 288W (96Wx3) | 100-277VAC | 24V | Yes | Yes | Dry/Damp | 11.9 x 4.3 x 1.8in. (301 x 110 x 45mm) |
| KVD-24384-DIMJ | 384W (96Wx4) | 100-277VAC | 24V | Yes | Yes | Dry/Damp | 12.7 x 5.5 x 1.9in. (323 x 140 x 48mm) |

5 in 1-dimmable (Triac/0-10V/1-10V/Potentiometer/10V PWM)

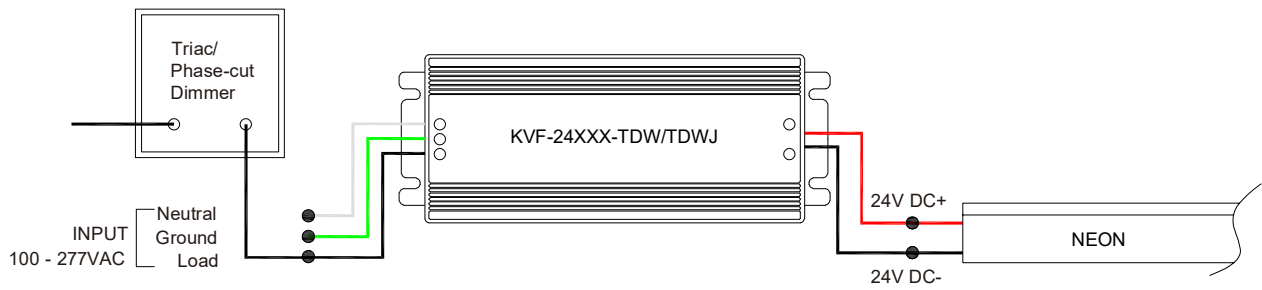
| Code | Max Load | Input | Output | Class 2 | With Junction Box | Environment | Size (L x W x H) |
|----------------|--------------|------------|--------|---------|-------------------|--------------|--|
| KVG-24030-DW | 30W | 100-277VAC | 24V | Yes | No | Dry/Damp | 6.1 x 2.1 x 0.8in. (155 x 54 x 20mm) |
| KVG-24060-DW | 60W | 100-277VAC | 24V | Yes | No | Dry/Damp | 7 x 2.4 x 0.9in. (178 x 61 x 24mm) |
| KVG-24096-DW | 96W | 100-277VAC | 24V | Yes | No | Dry/Damp/Wet | 9.1 x 2.8 x 1.7in. (230 x 70 x 43mm) |
| KVG-24030-DWJ | 30W | 100-277VAC | 24V | Yes | Yes | Dry/Damp | 6.5 x 3.7 x 1.6in. (165 x 95 x 40mm) |
| KVG-24060-DWJ | 60W | 100-277VAC | 24V | Yes | Yes | Dry/Damp | 7.4 x 3.7 x 1.6in. (188 x 95 x 40mm) |
| KVG-24096-DWJ | 96W | 100-277VAC | 24V | Yes | Yes | Dry/Damp | 8.7 x 3.7 x 1.6in. (220 x 95 x 40mm) |
| KVG-C24192-DWJ | 192W (96Wx2) | 100-277VAC | 24V | Yes | Yes | Dry/Damp | 10.9 x 4.3 x 1.8in. (278 x 110 x 45mm) |
| KVG-C24288-DWJ | 288W (96Wx3) | 100-277VAC | 24V | Yes | Yes | Dry/Damp | 11.9 x 4.3 x 1.8in. (301 x 110 x 45mm) |
| KVG-C24384-DWJ | 384W (96Wx4) | 100-277VAC | 24V | Yes | Yes | Dry/Damp | 12.8 x 5.5 x 1.9in. (325 x 140 x 48mm) |

Wiring Diagram

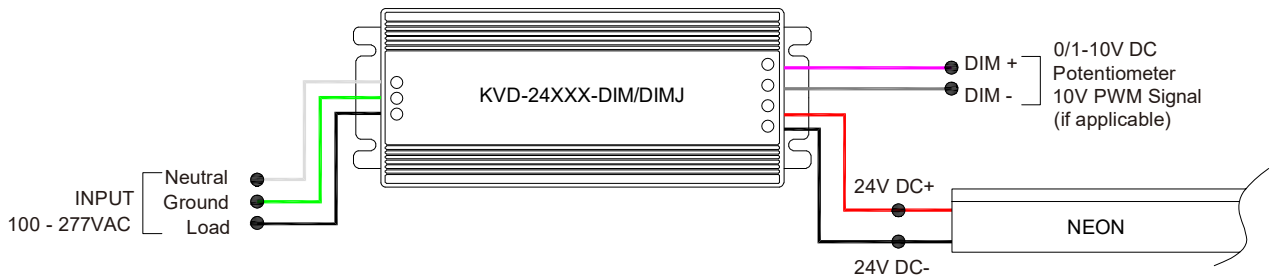
Non-dimmable



Phase cut/Triac-dimmable



4 in 1-dimmable (0-10V/1-10V/Potentiometer/10V PWM)



5 in 1-dimmable (Triac/0-10V/1-10V/Potentiometer/10V PWM)



LINIO NEON 1010X 3S TV

Vertical Bending · Static White

24V Voltage Drop & Maximum Wire Length Chart

Based on 24V voltage with a 3% voltage drop allowance. Indicates the maximum wire length from the power supply to the start of the run.

| Total load | 8AWG | 10AWG | 12AWG | 14AWG | 16AWG | 18AWG | 20AWG | 22AWG |
|--------------|-----------------|----------------|----------------|----------------|---------------|---------------|--------------|--------------|
| 10W / 0.4A | 1588ft (484.0m) | 999ft (304.5m) | 628ft (191.4m) | 395ft (120.4m) | 248ft (75.5m) | 156ft (47.5m) | 98ft (29.8m) | 61ft (18.5m) |
| 20W / 0.8A | 794ft (242.0m) | 499ft (152.1m) | 314ft (95.7m) | 197ft (60.0m) | 124ft (37.8m) | 78ft (23.7m) | 49ft (14.9m) | 30ft (9.1m) |
| 30W / 1.3A | 529ft (161.2m) | 333ft (101.5m) | 209ft (63.7m) | 131ft (39.9m) | 82ft (24.9m) | 52ft (15.8m) | 32ft (9.7m) | 20ft (6.1m) |
| 40W / 1.7A | 397ft (121.0m) | 249ft (75.9m) | 157ft (47.8m) | 98ft (29.8m) | 62ft (18.9m) | 39ft (11.8m) | 24ft (7.3m) | 15ft (4.5m) |
| 50W / 2.1A | 317ft (96.6m) | 199ft (60.6m) | 125ft (38.1m) | 79ft (24.0m) | 49ft (14.9m) | 31ft (9.4m) | 19ft (5.7m) | 12ft (3.6m) |
| 60W / 2.5A | 264ft (80.4m) | 166ft (50.6m) | 104ft (31.7m) | 65ft (19.8m) | 41ft (12.5m) | 26ft (7.9m) | 16ft (4.8m) | 10ft (3.0m) |
| 70W / 2.9A | 226ft (68.8m) | 142ft (43.2m) | 89ft (27.1m) | 56ft (17.0m) | 35ft (10.6m) | 22ft (6.7m) | 14ft (4.2m) | 8ft (2.4m) |
| 80W / 3.3A | 198ft (60.3m) | 124ft (37.8m) | 78ft (23.7m) | 49ft (14.9m) | 31ft (9.4m) | 19ft (5.7m) | 12ft (3.6m) | 7ft (2.1m) |
| 90W / 3.8A | 176ft (53.6m) | 111ft (33.8m) | 69ft (21.0m) | 43ft (13.1m) | 27ft (8.2m) | 17ft (5.1m) | 10ft (3.0m) | 6ft (1.8m) |
| 100W / 4.2A | 158ft (48.1m) | 99ft (30.1m) | 62ft (18.9m) | 39ft (11.8m) | 24ft (7.3m) | 15ft (4.5m) | 9ft (2.7m) | 6ft (1.8m) |
| 110W / 4.6A | 144ft (43.8m) | 90ft (27.4m) | 57ft (17.3m) | 35ft (10.6m) | 22ft (6.7m) | 14ft (4.2m) | 9ft (2.7m) | 5ft (1.5m) |
| 120W / 5.0A | 132ft (40.2m) | 83ft (25.3m) | 52ft (15.8m) | 32ft (9.7m) | 20ft (6.1m) | 13ft (3.9m) | 8ft (2.4m) | 5ft (1.5m) |
| 130W / 5.4A | 122ft (37.1m) | 76ft (23.1m) | 48ft (14.6m) | 30ft (9.1m) | 19ft (5.7m) | 12ft (3.6m) | 7ft (2.1m) | 4ft (1.2m) |
| 140W / 5.8A | 113ft (34.4m) | 71ft (21.6m) | 44ft (13.4m) | 28ft (8.5m) | 17ft (5.1m) | 11ft (3.3m) | 7ft (2.1m) | 4ft (1.2m) |
| 150W / 6.3A | 105ft (32.0m) | 66ft (20.1m) | 41ft (12.5m) | 26ft (7.9m) | 16ft (4.8m) | 10ft (3.0m) | 6ft (1.8m) | 4ft (1.2m) |
| 160W / 6.7A | 99ft (30.1m) | 62ft (18.9m) | 39ft (11.8m) | 24ft (7.3m) | 15ft (4.5m) | 9ft (2.7m) | 6ft (1.8m) | 3ft (0.9m) |
| 170W / 7.1A | 93ft (28.3m) | 58ft (17.6m) | 36ft (10.9m) | 23ft (7.0m) | 14ft (4.2m) | 9ft (2.7m) | 5ft (1.5m) | 3ft (0.9m) |
| 180W / 7.5A | 88ft (26.8m) | 55ft (16.7m) | 34ft (10.3m) | 22ft (6.7m) | 13ft (3.9m) | 8ft (2.4m) | 5ft (1.5m) | 3ft (0.9m) |
| 190W / 7.9A | 83ft (25.3m) | 52ft (15.8m) | 33ft (10.0m) | 20ft (6.0m) | 13ft (3.9m) | 8ft (2.4m) | 5ft (1.5m) | 3ft (0.9m) |
| 200W / 8.3A | 79ft (24.0m) | 49ft (14.9m) | 31ft (9.4m) | 19ft (5.7m) | 12ft (3.6m) | 7ft (2.1m) | 4ft (1.2m) | 3ft (0.9m) |
| 210W / 8.8A | 75ft (22.8m) | 47ft (14.3m) | 29ft (8.8m) | 18ft (5.4m) | 11ft (3.3m) | 7ft (2.1m) | 4ft (1.2m) | 2ft (0.6m) |
| 220W / 9.2A | 72ft (21.9m) | 45ft (13.7m) | 28ft (8.5m) | 18ft (5.4m) | 11ft (3.3m) | 7ft (2.1m) | 4ft (1.2m) | 2ft (0.6m) |
| 230W / 9.6A | 69ft (21.0m) | 43ft (13.1m) | 27ft (8.2m) | 17ft (5.1m) | 10ft (3.0m) | 6ft (1.8m) | 4ft (1.2m) | 2ft (0.6m) |
| 240W / 10.0A | 66ft (20.1m) | 41ft (12.5m) | 26ft (7.9m) | 16ft (4.8m) | 10ft (3.0m) | 6ft (1.8m) | 4ft (1.2m) | 2ft (0.6m) |
| 250W / 10.4A | 63ft (19.2m) | 40ft (12.1m) | 25ft (7.6m) | 15ft (4.5m) | 9ft (2.7m) | 6ft (1.8m) | 3ft (0.9m) | 2ft (0.6m) |