

# LINIO NEON 1615 TV RGB

Outdoor · RGB · Field Cuttable

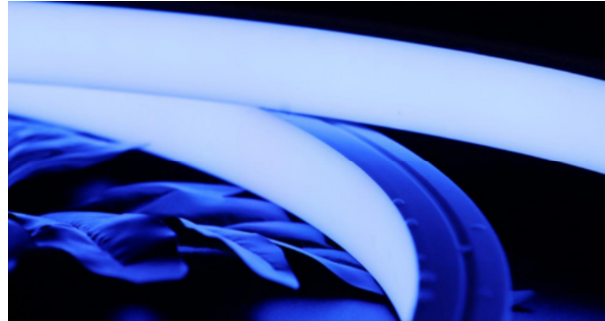
# Beamever

## Features

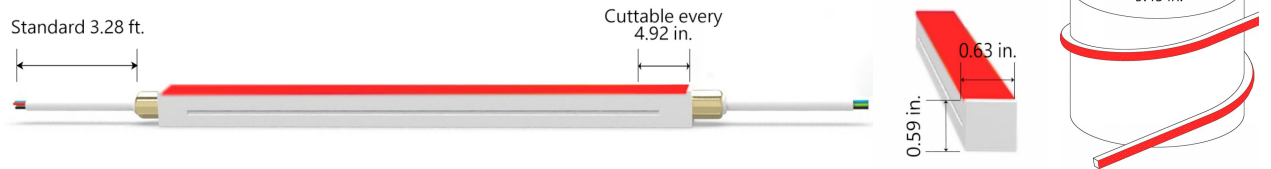
- Field cuttable & joinable
- Low voltage 24V DC
- RGB allows for versatile lighting effects
- Max run length up to 43ft from single power feed
- IP67 rated, ideal for indoor and outdoor use
- UV stable without yellowing or cracking over time



Fixture type	
Project name	
Project phase	
Date	



## Dimension & Bending



## Physical

Dimensions	0.63" x 0.59" (width x height)
Bend Direction	Vertical bending
Bend Diameter	9.45" (240mm)
Cutting Interval	4.92" (125mm)
Field Cuttable	Yes
Housing Material	Dow Corning
Housing Technique	Co-extrusion
Body Color	White
Finish	Matte
Feed Entry	Front, side, bottom
Feed Length	Standard length 3.28'
End Cap	Injected/silicone/mechanical
Mounting	Clips or channels (rigid or bendable)
Storage Temperature	-25~60°C (-13~140°F)
Ambient Temperature	-25~35°C (-13~95°F)
Max. Production Length	98.43ft (30m)

## Performance & Electrical

Voltage	24VDC (23.5Vmin, 24.5Vmax)
Beam Angle	120°
MacAdam	3 steps
Efficacy (lm/W)	25lm/W @RGB 3.35W
CRI	N/A
Lumen Maintenance	> 30,000 hours
IP Rating	IP67
Resistance	UV, solvent, saltwater, flame
Dimming	DMX,
Control Protocol	N/A
Warranty	5 years

## Certification & Safety

Certifications	UL
Environment	Dry, damp or wet locations

Lumen/ft	3.35W
■ R	14
■ G	61
■ B	10
■ RGB	85
Max. Run Length(ft)	42.64
Max. Run for Mechanical End Cap (ft)	21.33

# LINIO NEON 1615 TV RGB

Outdoor · RGB · Field Cuttable



## Order Code

Series	Temp./Color	Power	Feed Entry	Connector Wire	End Cap	Length (ft)
LN1615TV	RGB	335=3.35W	FF=Front + Front BB=Bottom + Bottom SS=Side + Side FC=Front + Closed FB=Front + Bottom BF=Bottom+Front FLS=Front + Left Side FRS=Front + Right Side BC=Bottom + Closed BLS=Bottom + Left Side BRS=Bottom + Right Side LSC=Left Side + Closed RSC=Right Side + Closed	OW=Open wire 3.28' MFCW=Male & female connector with 0.98' white cable MFCB=Male & female connector with 0.98' black cable	IJ=Injected end cap (IP67) * Factory made only SEC=Silicone end cap (IP67) MEC=Mechanical end cap (IP67) * End caps are added by default	Min. - 4.92" Max. - 98.4" Cut Inc. - 4.92"

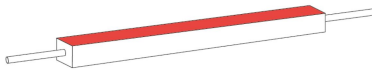
Example: LN1615TV-RGB-335-FF-OW-IJ-11'

\* Customizable—Contact Beamever representatives

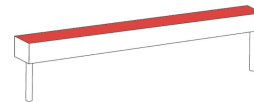
\*This product is not rated as submersible. Do not install in a location where water may pool or collect.

## Feed Entry Options

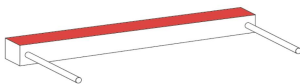
Front+Front feed entry (FF)



Bottom+Bottom feed entry (BB)



Side+Side feed entry (SS)



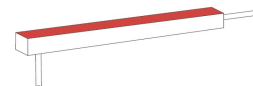
Front+Closed feed entry (FC)



Front+Bottom feed entry (FB)



Bottom+Front feed entry (BF)



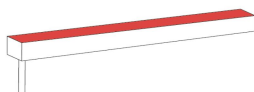
Front+Left Side feed entry (FLS)



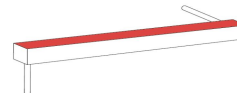
Front+Right Side feed entry (FRS)



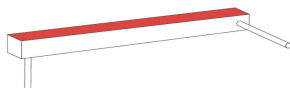
Bottom+Closed feed entry (BC)



Bottom+Left Side feed entry (BLS)



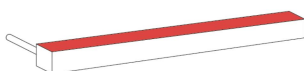
Bottom+Right Side feed entry (BRS)



Left Side+Closed feed entry (LSC)



Right Side+Closed feed entry (RSC)

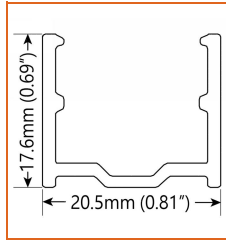


# LINIO NEON 1615 TV RGB

Outdoor · RGB · Field Cuttable



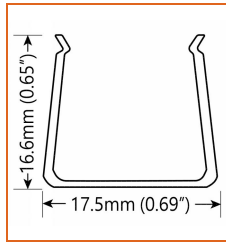
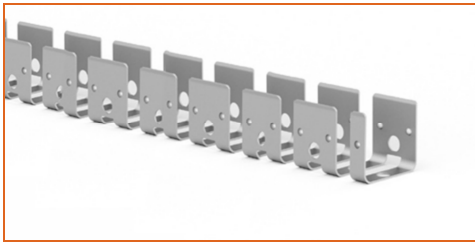
## Mounting Options



\* Standard length is 3.28'/pcs.

Name Straight aluminum channel

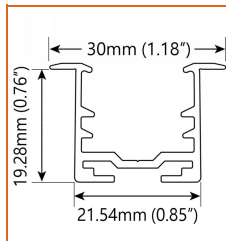
Code	LN1615-SC
Material	Aluminum
Mounting style	Surface mounted
Length	3.28' (1m)
Width	0.81" (20.5mm)
Height	0.69" (17.6mm)
Internal width	/



\* Standard length is 1.64'/pcs.

Name Bendable channel

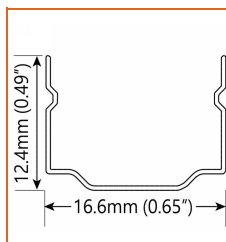
Code	LN1615-BC
Material	Stainless Steel
Mounting style	Surface mounted
Length	1.64' (0.5m)
Width	0.69" (17.5mm)
Height	0.65" (16.6mm)
Internal Width	/



\* Standard length is 3.28'/pcs.

Name Recessed straight channel

Code	LN1615-RSC
Material	Aluminum
Mounting style	Recessed mounted
Length	3.28' (1m)
Width	1.18" (30mm)
Height	0.76" (19.28)
Internal width	/



\* Recommend use 1 mounting clip for 1' of neon.

Name Mounting clip

Code	LN1615-CL
Material	Stainless Steel
Mounting style	Surface mounted
Length	0.79" (20mm)
Width	0.65" (16.6mm)
Height	0.49" (12.4mm)
Internal Width	/

# LINIO NEON 1615 TV RGB

Outdoor · RGB · Field Cuttable



## Driver Options

Code	Max Load	Input	Output	Dimmable	Class 2	Environment	Size (L*W*H)
<b>Non Dimmable</b>							
KV-24030-ASW	30W	100-277VAC	24V	No	Yes	Dry/damp	6.10*2.12*0.78 inch
KV-24060-ASW	60W	100-277VAC	24V	No	Yes	Dry/damp	7.00*2.40*0.94 inch
KV-24096-ASW	96W	100-277VAC	24V	No	Yes	Dry/damp/wet	9.05*2.75*1.69 inch
KV-24150-ASW	150W	100-277VAC	24V	No	No	Dry/damp/wet	10.07*3.07*1.85 inch
KV-24200-ASW	200W	100-277VAC	24V	No	No	Dry/damp/wet	10.07*3.07*1.85 inch
KV-24300-ASW	300W	100-277VAC	24V	No	No	Dry/damp/wet	10.86*3.07*1.85 inch
<b>DMX512 Dimmable</b>							
KVX-24096-3C-A	96W	100-277VAC	24V	Yes	Yes	Dry/damp/wet	9.05*3.07*0.98 inch
KVX-24150-3C-A	150W	100-277VAC	24V	Yes	No	Dry/damp/wet	10.9*3.07*0.98 inch
KVX-24200-3C-A	200W	100-277VAC	24V	Yes	No	Dry/damp/wet	10.9*3.07*0.98 inch
KVX-24300-3C-A	300W	100-277VAC	24V	Yes	No	Dry/damp/wet	11.85*3.07*0.98 inch

\* Please refer to the spec sheet of each power supply for more detailed information

## DMX Decoder Options

Code	Description
LT-903	3 channels output, up to 576W output power
LT-912	12 channels output, up to 1152W output power
LT-924	24 channels output, up to 1728W output power

\* Please refer to the spec sheet of each decoder for more detailed information

## Controller Options

Code	Description
DINA-DR micro	DMX 60 channels, DMX Stand Alone controller with 10 scenes, USB connectivity for programming
SLESA-U9	DMX 256 channels, USB connection, stand alone mode with 1 area and 20 scenes
STICK-GA2	DMX 512 channels, ready to use (pre-loaded with 8 scenes and 170 RGB fixtures)
STICK-CW4	DMX 1024 channels, up to 36 scenes stored and directly recalled via 6 touch sensitive buttons

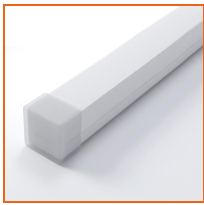
\* Please refer to the spec sheet of each controller for more detailed information

# LINIO NEON 1615 TV RGB

Outdoor · RGB · Field Cuttable



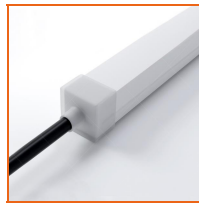
## Accessories Options (Optional, purchase for extra)



Name Silicone closed end cap

Code LN1615-SEC-C

Closed silicone end cap



Name Silicone front end cap

Code LN1615-SEC-F-4P

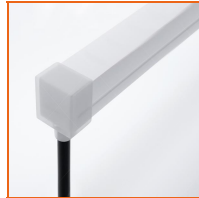
Silicone end cap front entry with 11.81" black cable, 4 pin



Name Silicone side end cap

Code LN1615-SEC-S-4P

Silicone end cap side entry with 11.81" black cable, 4 pin



Name Silicone bottom end cap

Code LN1615-SEC-B-4P

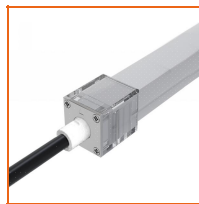
Silicone end cap bottom entry with 11.81" black cable, 4 pin



Name Mechanical end cap

Code LN1615-MEC-C

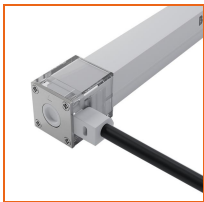
Mechanical closed end cap with screws



Name Mechanical end cap

Code LN1615-MEC-F-4P

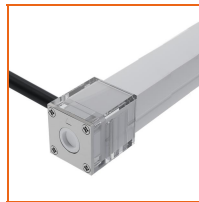
Mechanical end cap with screws, front entry with 11.81" black cable, 4 pin



Name Mechanical end cap

Code LN1615-MEC-LS-4P

Mechanical end cap with screws, left side entry with 11.81" black cable, 4 pin



Name Mechanical end cap

Code LN1615-MEC-RS-4P

Mechanical end cap with screws, right side entry with 11.81" black cable, 4 pin



Name Mechanical end cap

Code LN1615-MEC-B-4P

Mechanical end cap with screws, bottom entry with 11.81" black cable, 4 pin



Name Male and female connectors

Code MFC-4P-67-W

Male and female connectors with 11.81" white cable, 4 pin



Name Male and female connectors

Code MFC-4P-67-B

Male and female connectors with 11.81" black cable, 4 pin



Name Extension connectors

Code ETC-4P-67-1M

Extension Male and female connectors with 3.28ft white cable, 4 pin



Name Extension connectors

Code ETC-4P-67-5M

Extension Male and female connectors with 16.4ft white cable, 4 pin



Name Silicone glue

Code SG

Silicone glue

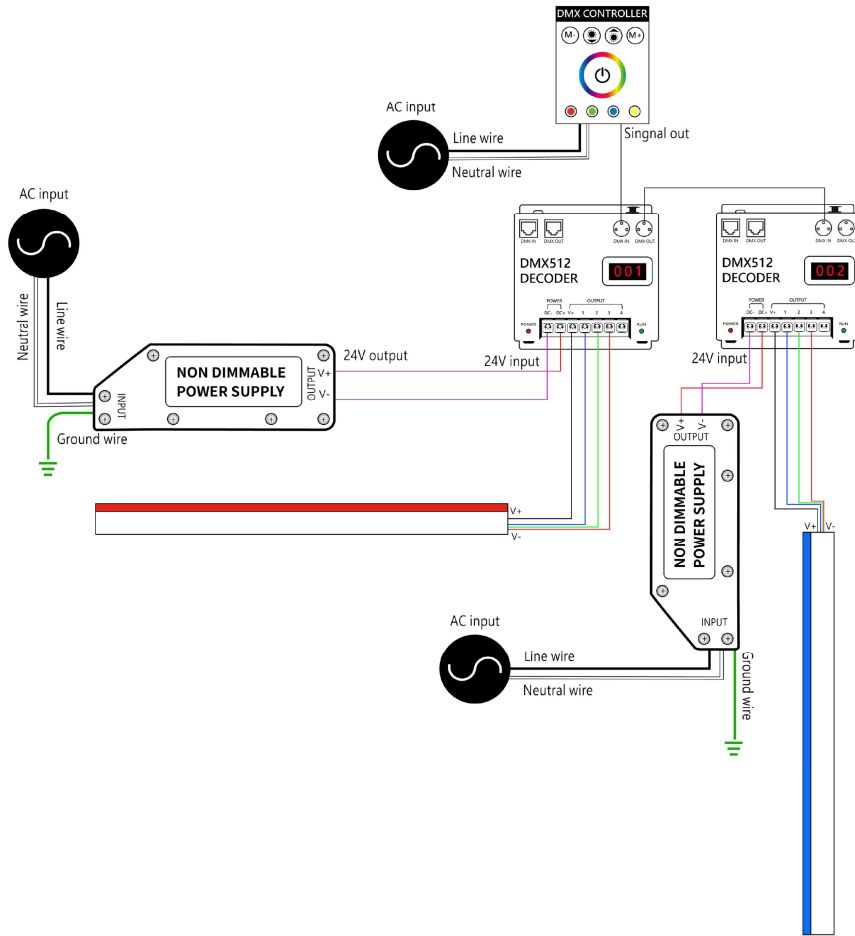
# LINIO NEON 1615 TV RGB

Outdoor · RGB · Field Cuttable



## Wiring Diagram

Nicolaudie + DMX Control System



Nicolaudie + DMX Driver System

