

LINIO NEON 1220 SV TW

Outdoor · Horizontal Bending · Field Cuttable

Beamever

Features

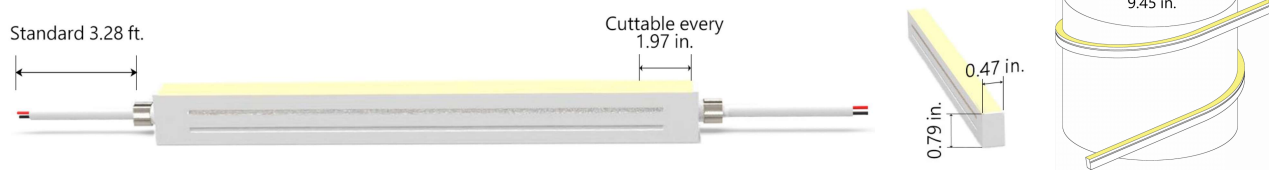
- Field cuttable & joinable
- Low voltage 24V DC
- Tunable white, CCT changing from 2700K to 5300K
- IP67 rated, ideal for indoor and outdoor uses
- UV stable without yellowing or cracking over time
- 5 years warranty



| | |
|---------------|--|
| Fixture type | |
| Project name | |
| Project phase | |
| Date | |



Dimension & Bending



Physical

| | |
|------------------------|---------------------------------------|
| Dimensions | 0.47" x 0.79" (width x height) |
| Bend Direction | Horizontal bending |
| Bend Diameter | 9.45" (240mm) |
| Cutting Interval | 1.97" (50mm) |
| Field Cuttable | Yes |
| Housing Material | Dow Corning |
| Housing Technique | Co-extrusion |
| Body Color | White |
| Finish | Matte |
| Feed Entry | Front, side, bottom |
| Feed Length | Standard length 3.28' |
| End Cap | Injected/silicone/mechanical |
| Mounting | Clips or channels (rigid or bendable) |
| Storage Temperature | -25~60°C (-13~140°F) |
| Ambient Temperature | See below table |
| Max. Production Length | 98.43ft (30m) |

Performance & Electrical

| | |
|-------------------|----------------------------------|
| Voltage | 24VDC (23.5Vmin, 24.5Vmax) |
| Beam Angle | 120° |
| MacAdam | 3 steps |
| Efficacy (lm/W) | 35.11lm/W @5300K |
| CRI | >80 |
| Lumen Maintenance | > 54,000 hours |
| IP Rating | IP67 |
| Resistance | UV, solvent, saltwater, flame |
| Dimming | Triac, ELV, PWM, 0-10V, DMX, SPI |
| Control Protocol | N/A |
| Warranty | 5 years |

Certification & Safety

| | |
|----------------|----------------------------|
| Certifications | UL |
| Environment | Dry, damp or wet locations |

| Lumen/ft | 4.57W |
|--------------------------------------|---|
| ■ 2700K | 77 |
| ■ 5300K | 73 |
| ■ 2700K+5300K | 145 |
| Max. Run Length (ft) | 16.4 |
| Max. Run for Mechanical End Cap (ft) | 16.4 |
| Ambient Temperature | -25~35°C (-13~95°F) @15W -25~45°C (-13~113°F) @7.5W (Single color) |

LINIO NEON 1220 SV TW

Outdoor · Horizontal Bending · Field Cuttable



Order Code

| Series | Temp./Color | Power | Feed Entry | Connector Wire | End Cap | Length (ft) |
|----------|----------------------|-----------|--|--|--|--|
| LN1220SV | 2753=2700K+53 00K | 457=4.57W | FF =Front + Front BB =Bottom + Bottom SS =Side + Side FC =Front + Closed FB =Front + Bottom BF =Bottom+Front FLS =Front + Left Side FRS =Front + Right Side BC =Bottom + Closed BLS =Bottom + Left Side BRS =Bottom + Right Side LSC =Left Side + Closed RSC =Right Side + Closed | OW =Open wire 3.28' MFCW =Male & female connector with 0.98' white cable MFCB =Male & female connector with 0.98' balck cable | IJ =Injected end cap (IP67) * Factory made only SEC =Silicone end cap (IP67) MEC =Mechanical end cap (IP67) * End caps are added by default | Min. - 1.97" Max. - 98.4' Cut Inc. - 1.97" |

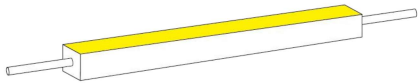
Example: LN1220SV-2753-457-FF-OW-IJ-11'

* Customizable—Contact Beamever representatives

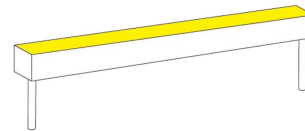
*This product is not rated as submersible. Do not install in a location where water may pool or collect.

Feed Entry Options

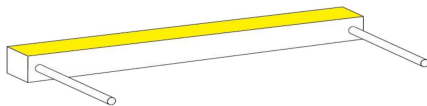
Front+Front feed entry (FF)



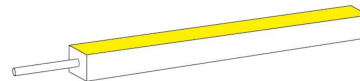
Bottom+Bottom feed entry (BB)



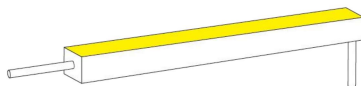
Side+Side feed entry (SS)



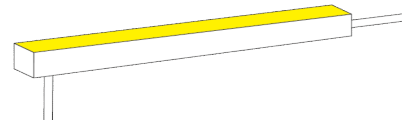
Front+Closed feed entry (FC)



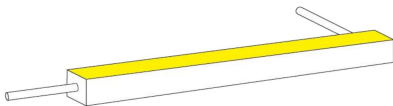
Front+Bottom feed entry (FB)



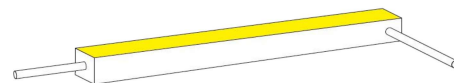
Bottom+Front feed entry (BF)



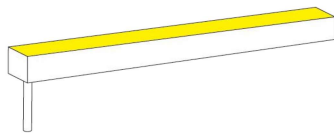
Front+Left Side feed entry (FLS)



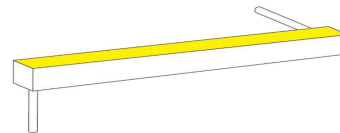
Front+Right Side feed entry (FRS)



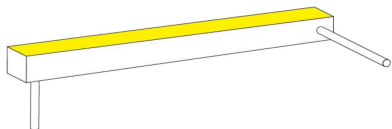
Bottom+Closed feed entry (BC)



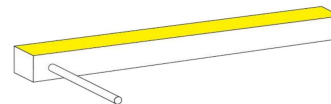
Bottom+Left Side feed entry (BLS)



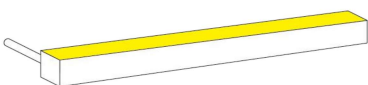
Bottom+Right Side feed entry (BRS)



Left Side+Closed feed entry (LSC)



Right Side+Closed feed entry (RSC)

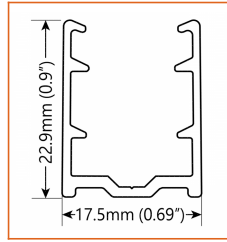
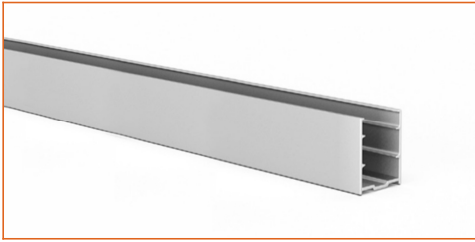


LINIO NEON 1220 SV TW

Outdoor · Horizontal Bending · Field Cuttable

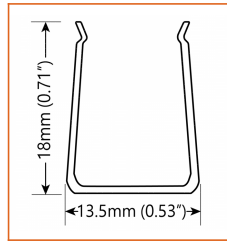
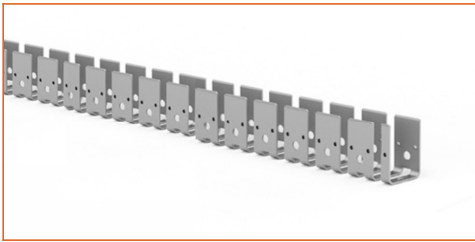


Mounting Options



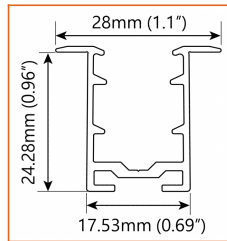
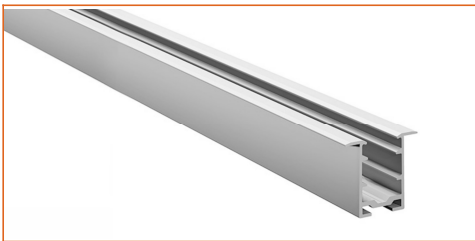
* Standard length is 3.28' / pcs.

| | |
|----------------|---------------------------|
| Name | Straight aluminum channel |
| Code | LN1220-SC |
| Material | Aluminum |
| Mounting style | Surface mounted |
| Length | 3.28' (1m) |
| Width | 0.69" (17.5mm) |
| Height | 0.9" (22.9mm) |
| Internal width | / |



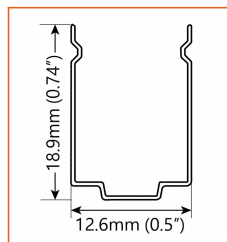
* Standard length is 1.64' / pcs.

| | |
|----------------|------------------|
| Name | Bendable channel |
| Code | LN1220-BC |
| Material | Stainless Steel |
| Mounting style | Surface mounted |
| Length | 1.64' (0.5m) |
| Width | 0.53" (13.5mm) |
| Height | 0.71" (18mm) |
| Internal Width | / |



* Standard length is 3.28' / pcs.

| | |
|----------------|---------------------------|
| Name | Recessed straight channel |
| Code | LN1220-RSC |
| Material | Aluminum |
| Mounting style | Recessed mounted |
| Length | 3.28' (1m) |
| Width | 1.1" (28mm) |
| Height | 0.96" (24.28mm) |
| Internal width | / |



* Recommend use 1 mounting clip for 1' of neon.

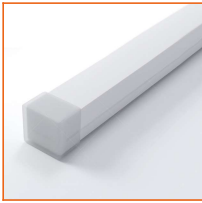
| | |
|----------------|-----------------|
| Name | Mounting clip |
| Code | LN1220-CL |
| Material | Stainless Steel |
| Mounting style | Surface mounted |
| Length | 0.79" (20mm) |
| Width | 0.5" (12.6mm) |
| Height | 0.74" (18.9mm) |
| Internal Width | / |

Driver Options

| Code | Max Load | Input | Output | Dimmable | Class 2 | Environment | Size (L*W*H) |
|----------------|----------|------------|--------|----------|---------|-------------|--------------------------|
| LM-100-24-U2A2 | 100W | 100-277VAC | 24V | Yes | No | Dry | 13.86 x 1.69 x 1.18 inch |

* Please refer to the spec sheet of each power supply for more detailed information

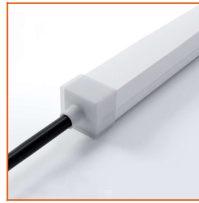
Accessories Options (Optional, purchase for extra)



Name Silicone closed end cap

Code LN1220-SEC-C

Closed silicone end cap for



Name Silicone front end cap

Code LN1220-SEC-F-3P

Silicone end cap front entry with 11.81" black cable, 3 pin



Name Silicone side end cap

Code LN1220-SEC-S-3P

Silicone end cap side entry with 11.81" black cable, 3 pin



Name Silicone bottom end cap

Code LN1220-SEC-B-3P

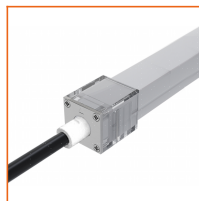
Silicone end cap bottom entry with 11.81" black cable, 3 pin



Name Mechanical end cap

Code LN1220-MEC-C

Mechanical closed end cap with screws



Name Mechanical end cap

Code LN1220-MEC-F-3P

Mechanical end cap with screws, front entry with 11.81" black cable, 3 pin



Name Mechanical end cap

Code LN1220-MEC-LS-3P

Mechanical end cap with screws, left side entry with 11.81" black cable, 3 pin



Name Mechanical end cap

Code LN1220-MEC-RS-3P

Mechanical end cap with screws, right side entry with 11.81" black cable, 3 pin



Name Mechanical end cap

Code LN1220-MEC-B-3P

Mechanical end cap with screws, bottom entry with 11.81" black cable, 3 pin



Name Male and female connectors

Code MFC-3P-67-W

Male and female connectors with 11.81" white cable, 3 pin



Name Male and female connectors

Code MFC-3P-67-B

Male and female connectors with 11.81" black cable, 3 pin



Name Extension connectors

Code ETC-3P-67-1M

Extension Male and female connectors with 3.28ft white cable, 3 pin



Name Extension connectors

Code ETC-3P-67-5M

Extension Male and female connectors with 16.4ft white cable, 3 pin

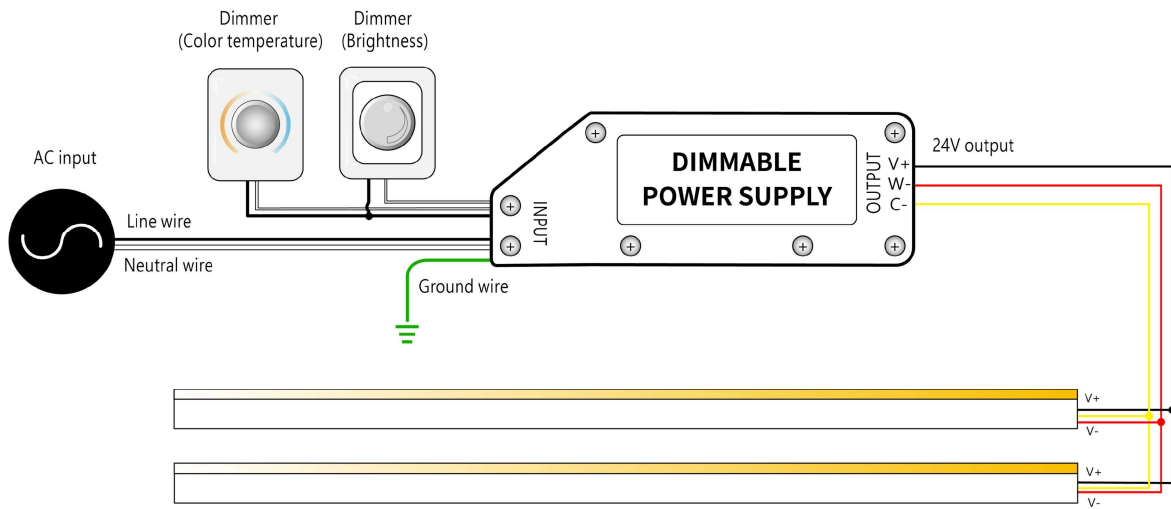
LINIO NEON 1220 SV TW

Outdoor · Horizontal Bending · Field Cuttable



Wiring Diagram

Dimmable



* Dimmers need to be purchased separately.