

NOVA TAPE TW

Indoor · Dot-free · Tunable White

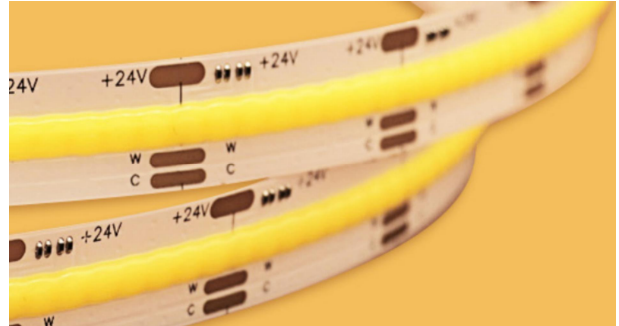
Beamever

Features

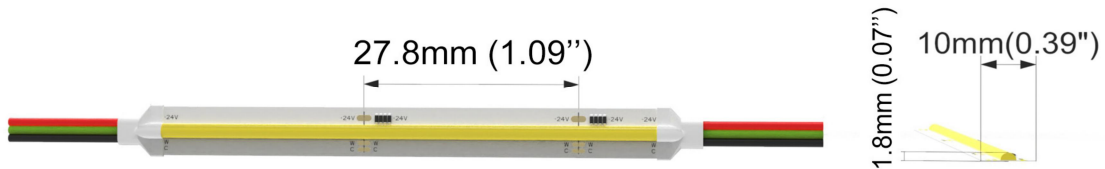
- Field cuttable & joinable
- Channel-free, easy to mount on smooth surface
- Slim and elegant, ideal for indoor applications
- 3M tape on the back makes it easy to install
- 5 years warranty
- Tunable white, CCT changing from 2700K to 6500K



| | |
|---------------|--|
| Fixture type | |
| Project name | |
| Project phase | |
| Date | |



Dimension



Physical

| | |
|-----------------------|--------------------------|
| PCB Width | 0.39" (10mm) |
| LED Pitch | N/A |
| Cutting Interval | 1.09" (27.8mm) |
| LED Brand | Sanan |
| LED Type | COB |
| LED Quantity | 175 LEDs/ft (576 LEDs/m) |
| Housing Material | N/A |
| Housing Technique | N/A |
| Adhesive Type | Yellow 3M tape |
| Feed Entry | Front |
| Feed Length | Standard length 3.28' |
| Storage Temperature | -25~60°C (-13~140°F) |
| Ambient Temperature | -20~45°C (-4~113°F) |
| Max Production Length | 98.4ft (30m) |

Performance & Electrical

| | |
|-------------------|----------------------------------|
| Voltage | 24VDC (23.5Vmin, 24.5Vmax) |
| Beam Angle | 150° |
| MacAdam | 3 steps |
| Efficacy (lm/W) | 107lm/W @2700K+6500K @4.57W |
| CRI | Ra90 |
| Lumen Maintenance | > 54,000 hours |
| IP Rating | IP20 |
| Resistance | UV, solvent, saltwater, flame |
| Dimming | Triac, ELV, PWM, 0-10V, DMX, SPI |
| Control Protocol | N/A |
| Warranty | 5 years |

Certification & Safety

| | |
|----------------|---------------|
| Certifications | UL |
| Environment | Dry locations |

Lumen/ft

4.57W

| | |
|----------------------|------|
| 2700K | 171 |
| 6500K | 213 |
| 2700K+6500K | 371 |
| Max. Run Length (ft) | 16.4 |

Order Code

| Series | Temp./Color | Power | Connector Wire | IP Rating | Length (ft) |
|--------|------------------|-----------|---|-----------|--|
| NOVA | 2765=2700K+6500K | 457=4.57W | OW=Open wire 3.28' MFC=Male & female connector 0.98' | 20=IP20 | Min. - 1.09" Max. - 98.4' Cut Inc. - 1.09" |

Example: NOVA-2765-457-OW-20-11'

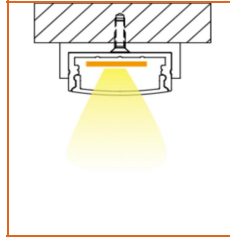
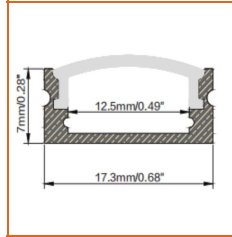
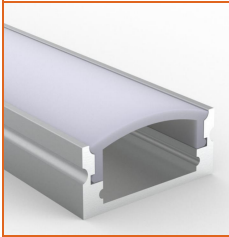
* Customizable—Contact Beamever representatives

NOVA TAPE TW

Indoor · Dot-free · Tunable White

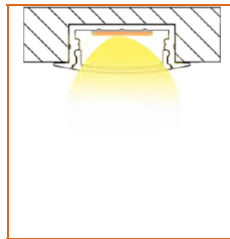
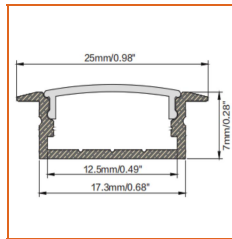
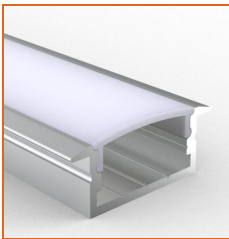


Mounting Options



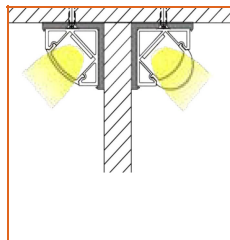
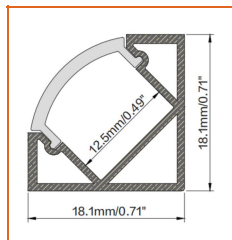
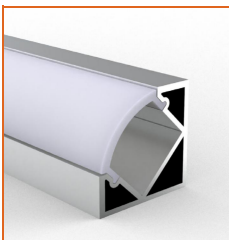
* Standard length is 3.28'/pcs.

| | |
|----------------|---------------------------|
| Name | Straight aluminum channel |
| Code | BE1205 |
| Material | Alluminum |
| Mounting style | Surface mounted |
| Length | 3.28' (1m) |
| Width | 0.68" (17.3mm) |
| Height | 0.28" (7mm) |
| Internal width | 0.49" (12.5mm) |



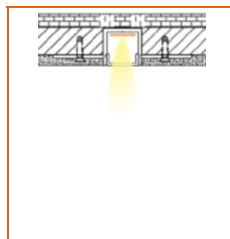
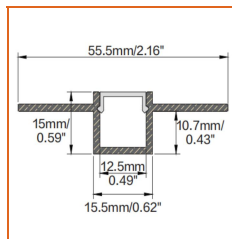
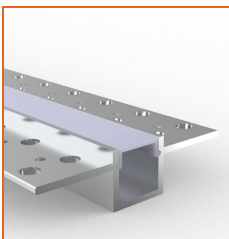
* Standard length is 3.28'/pcs.

| | |
|----------------|---------------------------|
| Name | Straight aluminum channel |
| Code | BE1204 |
| Material | Alluminum |
| Mounting style | Recessed mounted |
| Length | 3.28' (1m) |
| Width | 0.68" (17.3mm) |
| Height | 0.28" (7mm) |
| Internal width | 0.49" (12.5mm) |



* Standard length is 3.28'/pcs.

| | |
|----------------|---------------------------|
| Name | Straight aluminum channel |
| Code | BE1203 |
| Material | Alluminum |
| Mounting style | Angled mounted |
| Length | 3.28' (1m) |
| Width | 0.71" (18.1mm) |
| Height | 0.71" (18.1mm) |
| Internal width | 0.49" (12.5mm) |



* Standard length is 3.28'/pcs.

* For more options, please refer to "Beamever Profile Spec Sheet"

| | |
|----------------|---------------------------|
| Name | Straight aluminum channel |
| Code | BE5615 |
| Material | Alluminum |
| Mounting style | Mud-in |
| Length | 3.28' (1m) |
| Width | 0.62" (15.5mm) |
| Height | 0.59" (15mm) |
| Internal width | 0.49" (12.5mm) |

Driver Options

| Code | Max Load | Input | Output | Dimmable | Class 2 | Environment | Size (L*W*H) |
|----------------|----------|------------|--------|----------|---------|-------------|--------------------------|
| LM-100-24-U2A2 | 100W | 100-277VAC | 24V | Yes | No | Dry | 13.86 x 1.69 x 1.18 inch |

* Please refer to the spec sheet of each power supply for more detailed information

NOVA TAPE TW

Indoor · Dot-free · Tunable White



Accessories Options (Optional)



Name Strip to cable connector

Code NOVA20-STC-3P-10

Strip to cable connector with 5.91" cable, 3 pin, IP20



Name Strip to strip jumper connector

Code NOVA20-STSJ-3P-10

Strip to strip jumper connector with 5.91" cable, 3 pin, IP20



Name L-shaped connector

Code NOVA20-L-3P-10

L-shaped connector, 3 pin, IP20



Name Male & female connector

Code MFC-3P-20

Male and female connector with 7.87" cable, IP20, 3 pin



Name Male & female DC connector

Code MFC-DC-44

Male and female DC connector with 7.87" cable, IP44



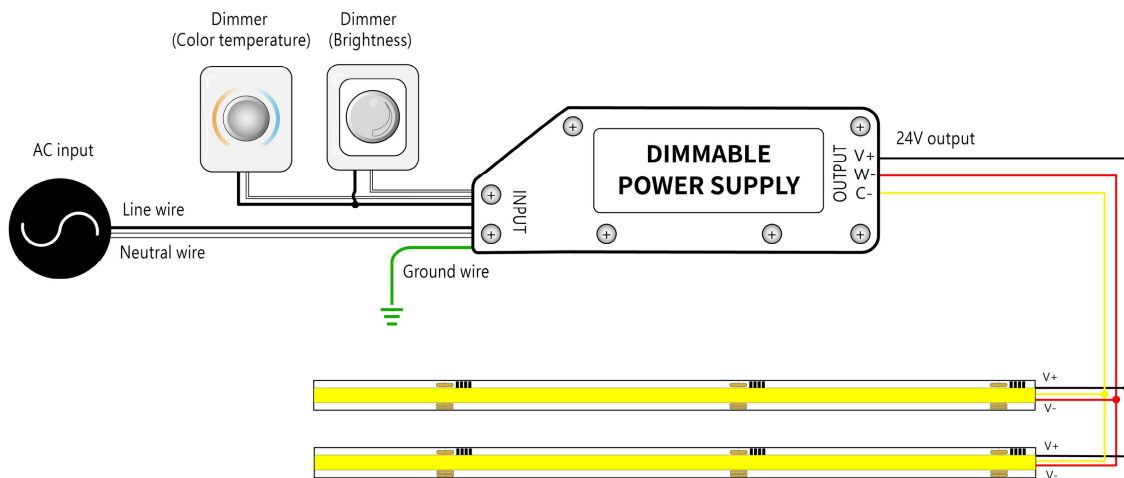
Name VHB 3M adhesive tape

Code VHB

VHB 3M adhesive back tape, stronger stickiness.

Wiring Diagram

Dimmable



* Dimmers need to be purchased separately.