

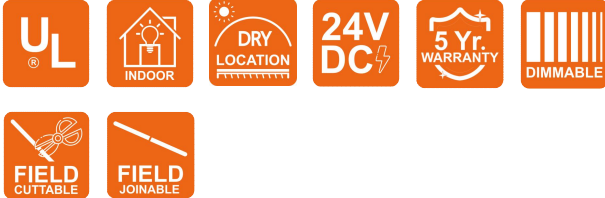
NOVA TAPE RGBW

Indoor · RGBW



Features

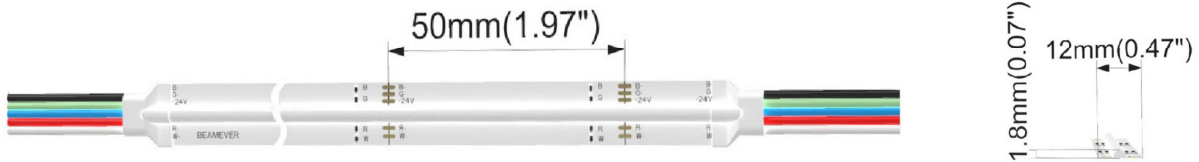
- Field cuttable & joinable
- Channel-free, easy to mount on smooth surface
- Slim and elegant, ideal for indoor applications
- 3M tape on the back makes it easy to install
- 5 years warranty
- RGBW allows for versatile lighting effects



Fixture type	
Project name	
Project phase	
Date	



Dimension



Physical

PCB Width	0.47" (12mm)
LED Pitch	N/A
Cutting Interval	1.97" (50mm)
LED Brand	Sanan
LED Type	COB
LED Quantity	170 LEDs/ft (560 LEDs/m)
Housing Material	N/A
Housing Technique	N/A
Adhesive Type	Yellow 3M tape
Feed Entry	Front
Feed Length	Standard length 3.28'
Storage Temperature	-25~60°C (-13~140°F)
Ambient Temperature	-20~45°C (-4~113°F)
Max Production Length	98.4ft (30m)

Performance & Electrical

Voltage	24VDC (23.5Vmin, 24.5Vmax)
Beam Angle	150°
MacAdam	3 steps
Efficacy (lm/W)	49lm/W
CRI	N/A
Lumen Maintenance	> 30,000 hours
IP Rating	IP20
Resistance	UV, solvent, saltwater, flame
Dimming	Triac, ELV, PWM, 0-10V, DMX, SPI
Control Protocol	N/A
Warranty	5 years

Certification & Safety

Certifications	UL
Environment	Dry locations

Lumen/ft	4.88W
R	29
G	128
B	27
W27	76
W30	79
W40	94
W65	79
RGBW40	276
Max. Run Length (ft)	16.4

NOVA TAPE RGBW

Indoor · RGBW



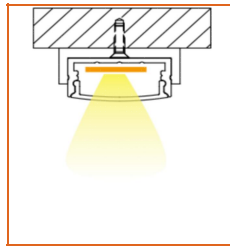
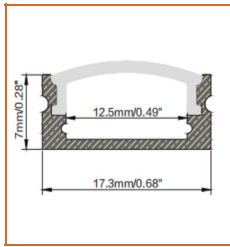
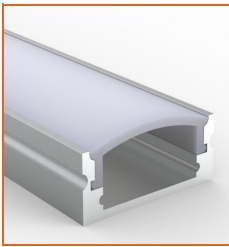
Order Code

Series	Temp./Color	Power	Connector Wire	IP Rating	Length (ft)
NOVA	RGBW40 (4000K)	488=4.88W	OW=Open wire 3.28' MFC=Male & female connector 0.98'	20=IP20	Min. - 1.97" Max. - 98.4' Cut Inc. - 1.97"

Example: NOVA- RGBW27-488-OW-20-11'

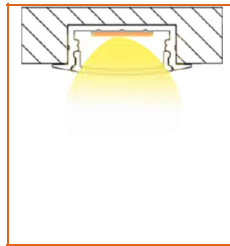
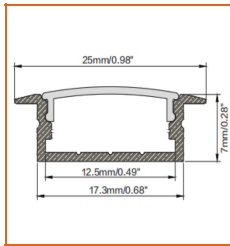
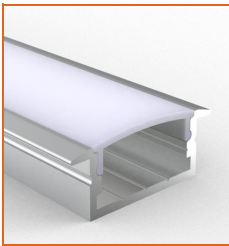
* Customizable—Contact Beamever representatives

Mounting Options



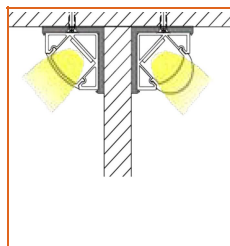
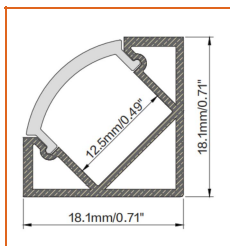
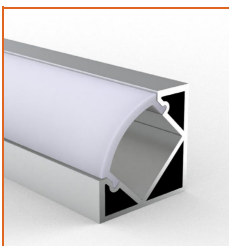
* Standard length is 3.28'/pcs.

Name	Straight aluminum channel
Code	BE1205
Material	Aluminum
Mounting style	Surface mounted
Length	3.28' (1m)
Width	0.68" (17.3mm)
Height	0.28" (7mm)
Internal width	0.49" (12.5mm)



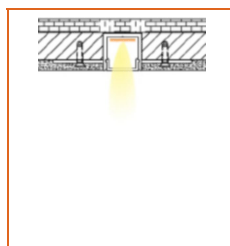
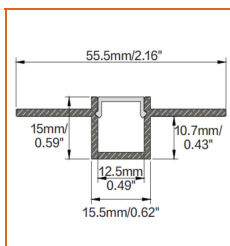
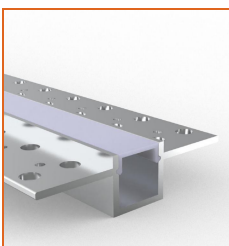
* Standard length is 3.28'/pcs.

Name	Straight aluminum channel
Code	BE1204
Material	Aluminum
Mounting style	Recessed mounted
Length	3.28' (1m)
Width	0.68" (17.3mm)
Height	0.28" (7mm)
Internal width	0.49" (12.5mm)



* Standard length is 3.28'/pcs.

Name	Straight aluminum channel
Code	BE1203
Material	Aluminum
Mounting style	Angled mounted
Length	3.28' (1m)
Width	0.71" (18.1mm)
Height	0.71" (18.1mm)
Internal width	0.49" (12.5mm)



* Standard length is 3.28'/pcs.

Name	Straight aluminum channel
Code	BE5615
Material	Aluminum
Mounting style	Mud-in
Length	3.28' (1m)
Width	0.62" (15.5mm)
Height	0.59" (15mm)
Internal width	0.49" (12.5mm)

* For more options, please refer to "Beamever Profile Spec Sheet"

NOVA TAPE RGBW

Indoor · RGBW



Driver Options

Code	Max Load	Input	Output	Dimmable	Class 2	Environment	Size (L*W*H)
Non Dimmable							
KV-24030-ASW	30W	100-277VAC	24V	No	Yes	Dry/damp	6.10*2.12*0.78 inch
KV-24060-ASW	60W	100-277VAC	24V	No	Yes	Dry/damp	7.00*2.40*0.94 inch
KV-24096-ASW	96W	100-277VAC	24V	No	Yes	Dry/damp/wet	9.05*2.75*1.69 inch
KV-24150-ASW	150W	100-277VAC	24V	No	No	Dry/damp/wet	10.07*3.07*1.85 inch
KV-24200-ASW	200W	100-277VAC	24V	No	No	Dry/damp/wet	10.07*3.07*1.85 inch
KV-24300-ASW	300W	100-277VAC	24V	No	No	Dry/damp/wet	10.86*3.07*1.85 inch
DMX512 Dimmable							
KVX-24096-4C-A	96W	100-277VAC	24V	Yes	Yes	Dry/damp/wet	9.05*3.07*0.98 inch
KVX-24150-4C-A	150W	100-277VAC	24V	Yes	No	Dry/damp/wet	10.9*3.07*0.98 inch
KVX-24200-4C-A	200W	100-277VAC	24V	Yes	No	Dry/damp/wet	10.9*3.07*0.98 inch
KVX-24300-4C-A	300W	100-277VAC	24V	Yes	No	Dry/damp/wet	11.85*3.07*0.98 inch

* Please refer to the spec sheet of each power supply for more detailed information

DMX Decoder Options

Code	Description
LT-904	4 channels output, up to 576W output power
LT-916	16 channels output, up to 1152W output power
LT-932	32 channels output, up to 2304W output power

* Please refer to the spec sheet of each decoder for more detailed information

Controller Options

Code	Description
DINA-DR micro	DMX 60 channels, DMX Stand Alone controller with 10 scenes, USB connectivity for programming
SLESA-U9	DMX 256 channels, USB connection, stand alone mode with 1 area and 20 scenes
STICK-GA2	DMX 512 channels, ready to use (pre-loaded with 8 scenes and 170 RGB fixtures)
STICK-CW4	DMX 1024 channels, up to 36 scenes stored and directly recalled via 6 touch sensitive buttons

* Please refer to the spec sheet of each controller for more detailed information

Accessories Options (Optional, purchase for extra)



Name Strip to strip connector

Code NOVA20-ST5-5P-12

Strip to strip connector, 5 pin, IP20



Name Strip to strip jumper connector

Code NOVA20-ST5J-5P-12

Strip to strip jumper connector with 5.91" cable, 5 pin, IP20



Name Strip to cable connector

Code NOVA20-STC-5P-12

Strip to cable connector with 5.91" cable, 5 pin, IP20



Name L-shaped corner connector

Code NOVA20-LC-5P-12

L-shaped corner connector, 5 pin, IP20



Name Male & female connector

Code MFC-5P-20

Male and female connector with 11.81" cable, IP20, 5 pin



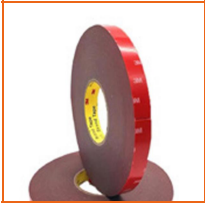
Name Male & female DC connector

Code MFC-DC-44

Male and female DC connector with 11.81" cable, IP44

NOVA TAPE RGBW

Indoor · RGBW



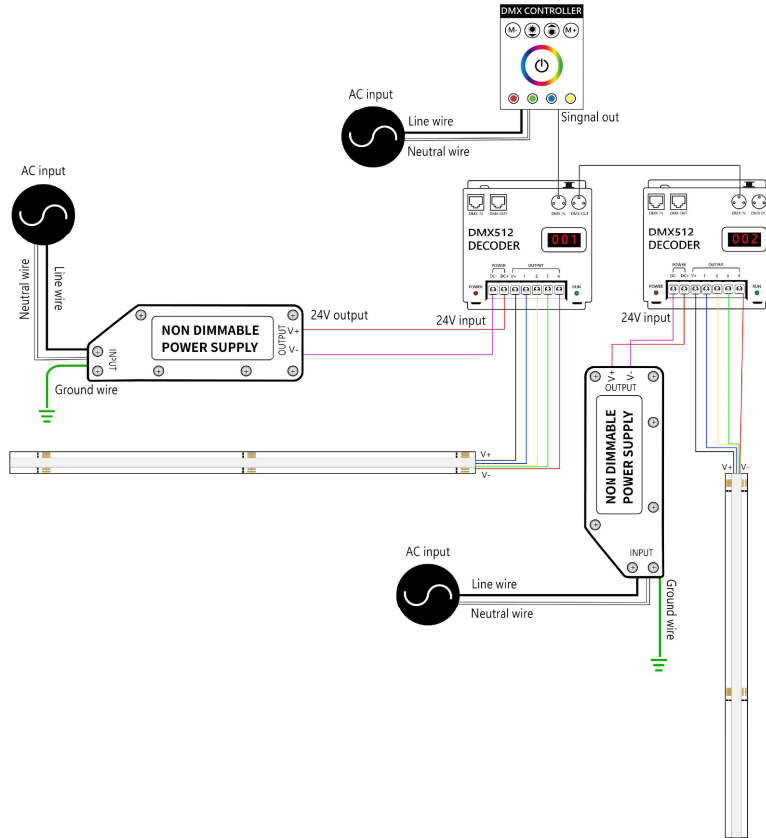
Name VHB 3M adhesive tape

Code VHB

VHB 3M adhesive back tape, stronger stickiness.

Wiring Diagram

Nicolaudie + DMX Control System



Nicolaudie + DMX Driver System

