

LINIO NEON 1220 SV RGBW

Outdoor · Horizontal Bending · Field Cuttable

Beamever

Features

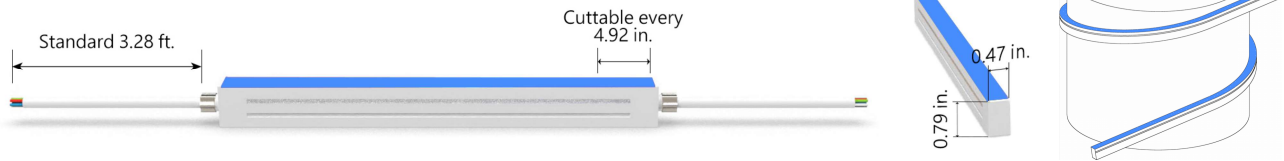
- Field cuttable & joinable
- Low voltage 24V DC
- RGBW allows for versatile lighting effects
- Max run length up to 32.8ft from single power feed
- IP67 rated, ideal for indoor and outdoor uses
- UV stable without yellowing or cracking over time



Fixture type	
Project name	
Project phase	
Date	



Dimension & Bending



Physical

Dimensions	0.47" x 0.79" (width x height)
Bend Direction	Horizontal bending
Bend Diameter	9.45" (240mm)
Cutting Interval	4.92" (125mm)
Field Cuttable	Yes
Housing Material	Dow Corning
Housing Technique	Co-extrusion
Body Color	White
Finish	Matte
Feed Entry	Front, side, bottom
Feed Length	Standard length 3.28'
End Cap	Injected/silicone/mechanical
Mounting	Clips or channels (rigid or bendable)
Storage Temperature	-25~60°C (-13~140°F)
Ambient Temperature	See below table
Max. Production Length	98.43ft (30m)

Performance & Electrical

Voltage	24VDC (23.5Vmin, 24.5Vmax)
Beam Angle	120°
MacAdam	3 steps
Efficacy (lm/W)	32.8lm/W @5300K
CRI	N/A
Lumen Maintenance	> 30,000 hours
IP Rating	IP67
Resistance	UV, solvent, saltwater, flame
Dimming	DMX
Control Protocol	N/A
Warranty	5 years

Certification & Safety

Certifications	UL
Environment	Dry, damp or wet locations

Lumen/ft

4.57W

R	8
G	38
B	6
W27	28
W40	41
W53	38
RGBW40	77
Max. Run Length (ft)	32.8
Max. Run for Mechanical End Cap (ft)	15.74
Ambient Temperature	-25~55°C (-13~131°F) @3.75W (Single color) -25~35°C (-13~95°F) @15W

LINIO NEON 1220 SV RGBW

Outdoor · Horizontal Bending · Field Cuttable



Order Code

Series	Temp./Color	Power	Feed Entry	Connector Wire	End Cap	Length (ft)
LN1220SV	RGBW40 (4000K)	457=4.57W	FF =Front + Front BB =Bottom + Bottom SS =Side + Side FC =Front + Closed FB =Front + Bottom BF =Bottom+Front FLS =Front + Left Side FRS =Front + Right Side BC =Bottom + Closed BLS =Bottom + Left Side BRS =Bottom + Right Side LSC =Left Side + Closed RSC =Right Side + Closed	OW =Open wire 3.28' MFCW =Male & female connector with 0.98' white cable MFCB =Male & female connector with 0.98' black cable	IJ =Injected end cap (IP67) * Factory made only SEC =Silicone end cap (IP67) MEC =Mechanical end cap (IP67) * End caps are added by default	Min. - 4.92" Max. - 98.4' Cut Inc. - 4.92"

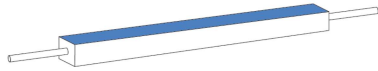
Example: LN1220SV-**RGBW40-457-FF-OW-IJ-11'**

* Customizable—Contact Beamever representatives

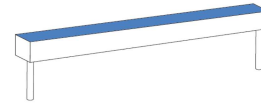
*This product is not rated as submersible. Do not install in a location where water may pool or collect.

Feed Entry Options

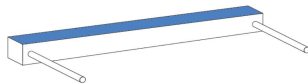
Front+Front feed entry (FF)



Bottom+Bottom feed entry (BB)



Side+Side feed entry (SS)



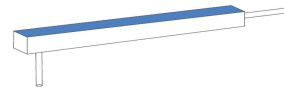
Front+Closed feed entry (FC)



Front+Bottom feed entry (FB)



Bottom+Front feed entry (BF)



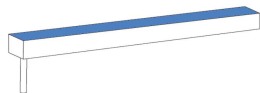
Front+Left Side feed entry (FLS)



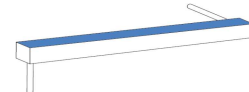
Front+Right Side feed entry (FRS)



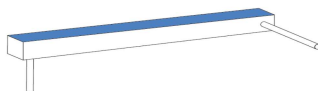
Bottom+Closed feed entry (BC)



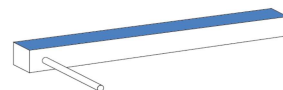
Bottom+Left Side feed entry (BLS)



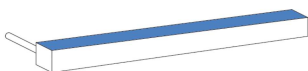
Bottom+Right Side feed entry (BRS)



Left Side+Closed feed entry (LSC)



Right Side+Closed feed entry (RSC)

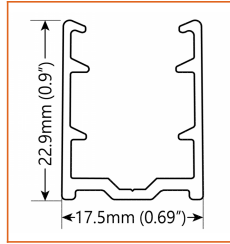
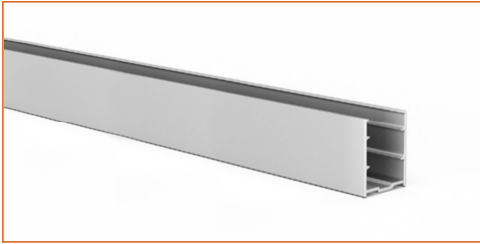


LINIO NEON 1220 SV RGBW

Outdoor · Horizontal Bending · Field Cuttable

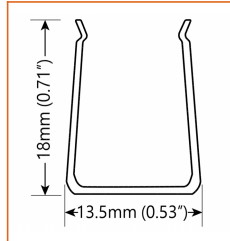


Mounting Options



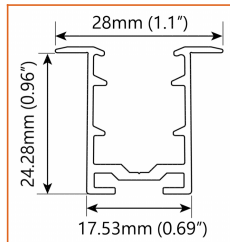
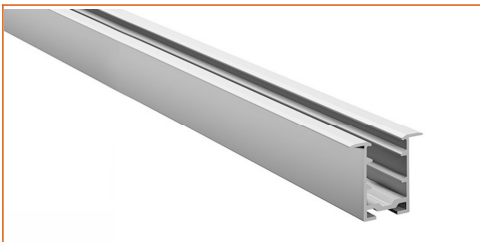
* Standard length is 3.28' / pcs.

Name	Straight aluminum channel
Code	LN1220-SC
Material	Aluminum
Mounting style	Surface mounted
Length	3.28' (1m)
Width	0.69" (17.5mm)
Height	0.9" (22.9mm)
Internal width	/



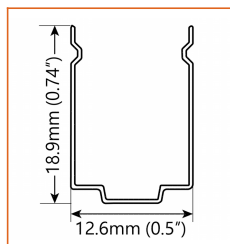
* Standard length is 1.64' / pcs.

Name	Bendable channel
Code	LN1220-BC
Material	Stainless Steel
Mounting style	Surface mounted
Length	1.64' (0.5m)
Width	0.53" (13.5mm)
Height	0.71" (18mm)
Internal Width	/



* Standard length is 3.28' / pcs.

Name	Recessed straight channel
Code	LN1220-RSC
Material	Aluminum
Mounting style	Recessed mounted
Length	3.28' (1m)
Width	1.1" (28mm)
Height	0.96" (24.28mm)
Internal width	/



* Recommend use 1 mounting clip for 1' of neon.

Name	Mounting clip
Code	LN1220-CL
Material	Stainless Steel
Mounting style	Surface mounted
Length	0.79" (20mm)
Width	0.5" (12.6mm)
Height	0.74" (18.9mm)
Internal Width	/

LINIO NEON 1220 SV RGBW

Outdoor · Horizontal Bending · Field Cuttable



Driver Options

Code	Max Load	Input	Output	Dimmable	Class 2	Environment	Size (L*W*H)
Non Dimmable							
KV-24030-ASW	30W	100-277VAC	24V	No	Yes	Dry/damp	6.10*2.12*0.78 inch
KV-24060-ASW	60W	100-277VAC	24V	No	Yes	Dry/damp	7.00*2.40*0.94 inch
KV-24096-ASW	96W	100-277VAC	24V	No	Yes	Dry/damp/wet	9.05*2.75*1.69 inch
KV-24150-ASW	150W	100-277VAC	24V	No	No	Dry/damp/wet	10.07*3.07*1.85 inch
KV-24200-ASW	200W	100-277VAC	24V	No	No	Dry/damp/wet	10.07*3.07*1.85 inch
KV-24300-ASW	300W	100-277VAC	24V	No	No	Dry/damp/wet	10.86*3.07*1.85 inch
DMX512 Dimmable							
KVX-24096-4C-A	96W	100-277VAC	24V	Yes	Yes	Dry/damp/wet	9.05*3.07*0.98 inch
KVX-24150-4C-A	150W	100-277VAC	24V	Yes	No	Dry/damp/wet	10.9*3.07*0.98 inch
KVX-24200-4C-A	200W	100-277VAC	24V	Yes	No	Dry/damp/wet	10.9*3.07*0.98 inch
KVX-24300-4C-A	300W	100-277VAC	24V	Yes	No	Dry/damp/wet	11.85*3.07*0.98 inch

* Please refer to the spec sheet of each power supply for more detailed information

DMX Decoder Options

Code	Description
LT-904	4 channels output, up to 576W output power
LT-916	16 channels output, up to 1152W output power
LT-932	32 channels output, up to 2304W output power

* Please refer to the spec sheet of each decoder for more detailed information

Controller Options

Code	Description
DINA-DR micro	DMX 60 channels, DMX Stand Alone controller with 10 scenes, USB connectivity for programming
SLESA-U9	DMX 256 channels, USB connection, stand alone mode with 1 area and 20 scenes
STICK-GA2	DMX 512 channels, ready to use (pre-loaded with 8 scenes and 170 RGB fixtures)
STICK-CW4	DMX 1024 channels, up to 36 scenes stored and directly recalled via 6 touch sensitive buttons

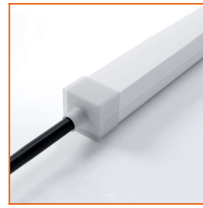
* Please refer to the spec sheet of each controller for more detailed information

Accessories Options (Optional, purchase for extra)



Name Silicone closed end cap
 Code LN1220-SEC-C

Closed silicone end cap for



Name Silicone front end cap
 Code LN1220-SEC-F-5P

Silicone end cap front entry with 11.81" black cable, 5 pin



Name Silicone side end cap
 Code LN1220-SEC-S-5P

Silicone end cap side entry with 11.81" black cable, 5 pin



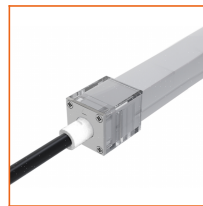
Name Silicone bottom end cap
 Code LN1220-SEC-B-5P

Silicone end cap bottom entry with 11.81" black cable, 5 pin



Name Mechanical end cap
 Code LN1220-MEC-C

Mechanical closed end cap with screws



Name Mechanical end cap
 Code LN1220-MEC-F-5P

Mechanical end cap with screws, front entry with 11.81" black cable, 5 pin



Name Mechanical end cap
 Code LN1220-MEC-LS-5P
 Mechanical end cap with screws, left side entry with 11.81" black cable, 5 pin



Name Mechanical end cap
 Code LN1220-MEC-RS-5P
 Mechanical end cap with screws, right side entry with 11.81" black cable, 5 pin



Name Mechanical end cap
 Code LN1220-MEC-B-5P
 Mechanical end cap with screws, bottom entry with 11.81" black cable, 5 pin



Name Male and female connectors
 Code MFC-5P-67-W
 Male and female connectors with 11.81" white cable, 5 pin



Name Male and female connectors
 Code MFC-5P-67-B
 Male and female connectors with 11.81" black cable, 5 pin



Name Extension connectors
 Code ETC-5P-67-1M
 Extension Male and female connectors with 3.28ft white cable, 5 pin



Name Extension connectors
 Code ETC-5P-67-5M
 Extension Male and female connectors with 16.4ft white cable, 5 pin

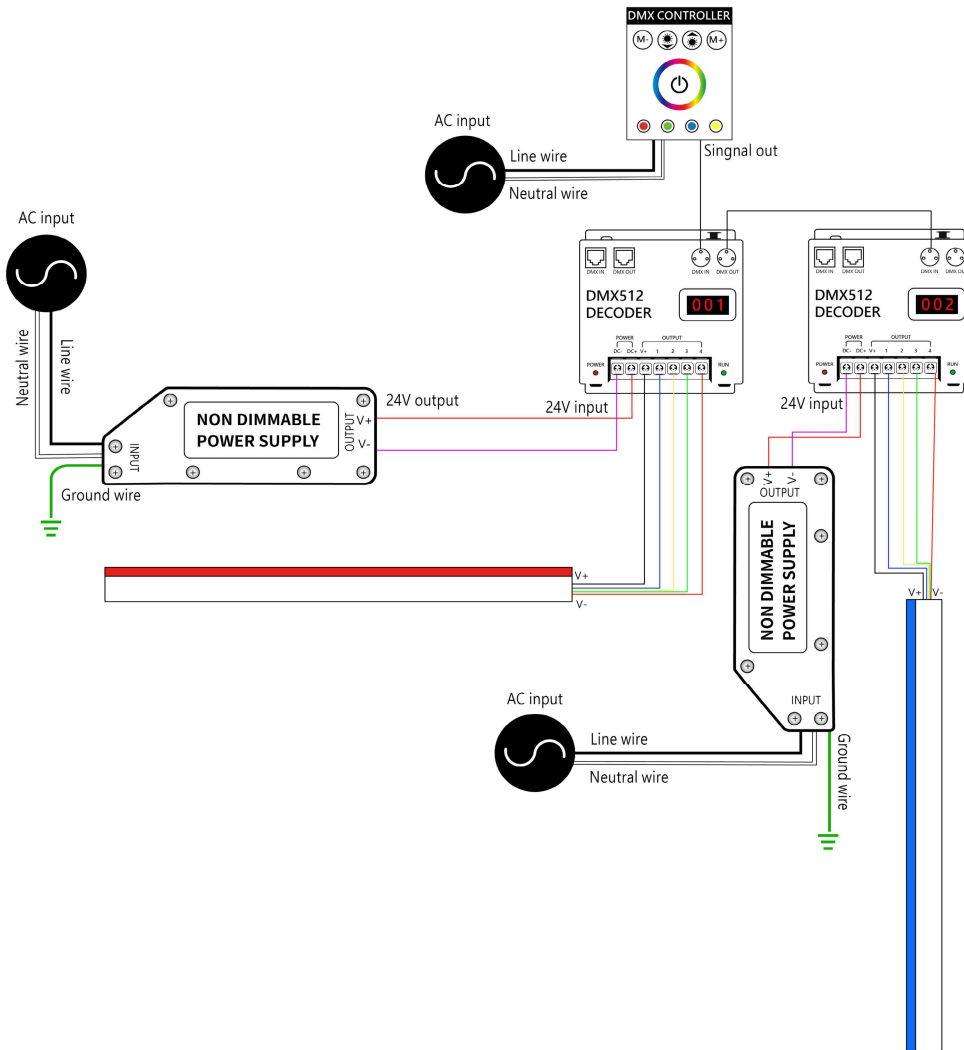
LINIO NEON 1220 SV RGBW

Outdoor · Horizontal Bending · Field Cuttable



Wiring Diagram

Nicolaudie + DMX Control System



Nicolaudie + DMX Driver System

