

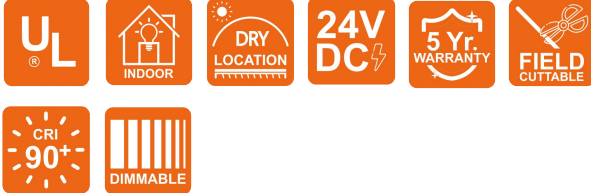
# NOVA TAPE S TW

Indoor · Ultra-slim · Dot-free

# Beamever

## Features

- Field cuttable
- Channel-free, easy to mount on smooth surface
- 0.16 inch ultra-slim, ideal for edge lighting applications
- 3M tape on the back makes it easy to install
- 5 years warranty
- Available in a variety of CCT color options



Fixture type	
Project name	
Project phase	
Date	



## Dimension



## Physical

PCB Width	0.16" (4mm)
LED Pitch	N/A
Cutting Interval	1.09" (27.8mm)
LED Brand	Sanan
LED Type	COB
LED Quantity	175 LEDs/ft (576 LEDs/m)
Housing Material	N/A
Housing Technique	N/A
Adhesive Type	Yellow 3M tape
Feed Entry	Front
Feed Length	Standard length 3.28'
Storage Temperature	-25~60°C (-13~140°F)
Ambient Temperature	-20~45°C (-4~113°F)
Max Production Length	98.4ft (30m)

## Performance & Electrical

Voltage	24VDC (23.5Vmin, 24.5Vmax)
Beam Angle	150°
MacAdam	3 steps
Efficacy (lm/W)	105lm/W @2700K+5000K 3.66W
CRI	Ra90
Lumen Maintenance	> 54,000 hours
IP Rating	IP20
Resistance	UV, solvent, saltwater, flame
Dimming	Triac, ELV, PWM, 0-10V, DMX, SPI
Control Protocol	N/A
Warranty	5 years

## Certification & Safety

Certifications	UL
Environment	Dry locations

Lumen/ft	3.66W
■ 2700K	171
■ 5000K	215
■ 2700K+5000K	386
Max. Run Length (ft)	16.4

## Order Code

Series	Temp./Color	Power	Connector Wire	IP Rating	Length (ft)
NOVAS	2750=2700K+5000K	366=3.66W	OW=Open wire 3.28' MFC=Male & female connector 0.98'	20=IP20	Min. - 1.09" Max. - 98.4' Cut Inc. - 1.09"

Example: NOVAS-2750-366-OW-20-11'

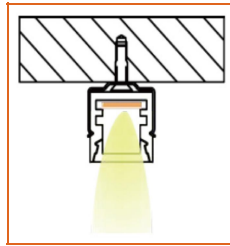
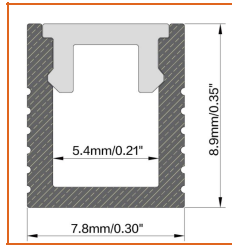
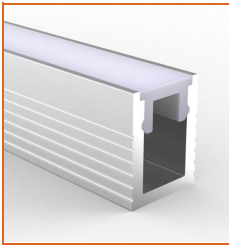
\* Customizable—Contact Beamever representatives

# NOVA TAPE S TW

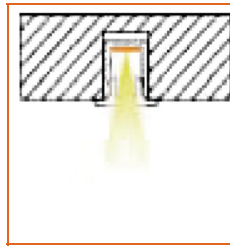
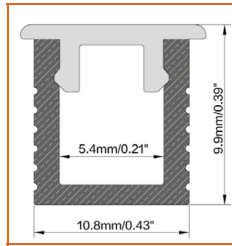
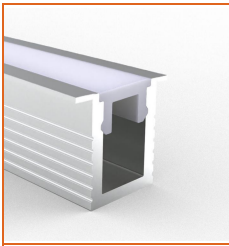
Indoor · Ultra-slim · Dot-free



## Mounting Options



\* Standard length is 3.28' / pcs.



\* Standard length is 3.28' / pcs.

\* For more options, please refer to "Beamever Profile Spec Sheet"

Name	Straight alluminum channel
Code	BE078
Material	Alluminum
Mounting style	Surface mounted
Length	3.28' (1m)
Width	0.3" (7.8mm)
Height	0.35" (8.9mm)
Internal width	0.21" (5.4mm)

Name	Recessed alluminum channel
Code	BE078-1
Material	Alluminum
Mounting style	Recessed mounted
Length	3.28' (1m)
Width	0.43" (10.8mm)
Height	0.39" (9.9mm)
Internal width	0.21" (5.4mm)

## Driver Options

Code	Max Load	Input	Output	Dimmable	Class 2	Environment	Size (L*W*H)
LM-100-24-U2A2	100W	100-277VAC	24V	Yes	No	Dry	13.86 x 1.69 x 1.18 inch

\* Please refer to the spec sheet of each power supply for more detailed information

## Accessories Options (Optional)



Name Male & female connector

Code MFC-2P-20

Male and female connector with 11.81" cable, IP20, 2 pin



Name Male & female DC connector

Code MFC-DC-44

Male and female DC connector with 11.81" cable, IP44



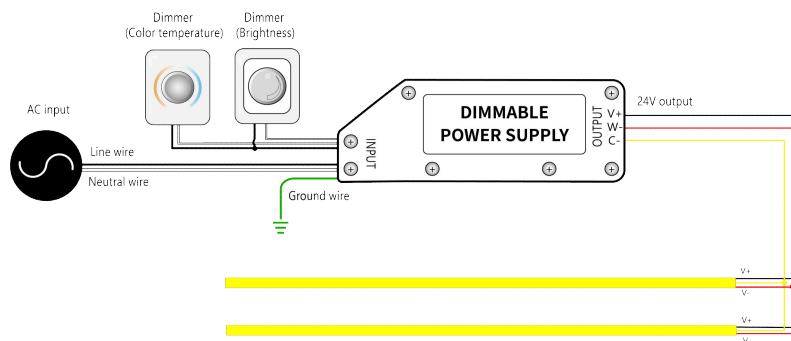
Name VHB 3M adhesive tape

Code VHB

VHB 3M adhesive back tape, stronger stickiness.

## Wiring Diagram

### Dimmable



\* Dimmers need to be purchased separately.