

LINIO NEON 1615 SV RGB

Outdoor · RGB · Field Cuttable

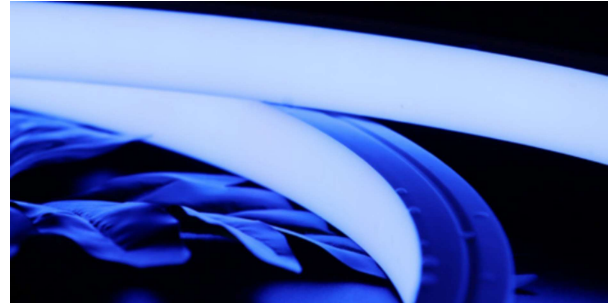
Beamever

Features

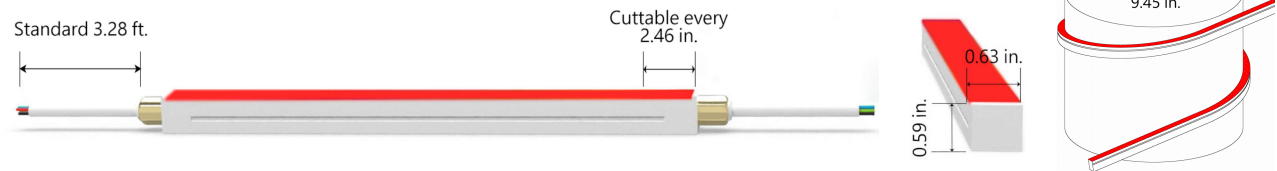
- Field cuttable & joinable
- Low voltage 24V DC
- RGB allows for versatile lighting effects
- IP67 rated, ideal for indoor and outdoor use
- All dimming protocols dimmable
- UV stable without yellowing or cracking over time



Fixture type	
Project name	
Project phase	
Date	



Dimension & Bending



Physical

Dimensions	0.63" x 0.59" (width x height)
Bend Direction	Vertical bending
Bend Diameter	9.45" (240mm)
Cutting Interval	2.46" (62.5mm)
Field Cuttable	Yes
Housing Material	Dow Corning
Housing Technique	Co-extrusion
Body Color	White
Finish	Matte
Feed Entry	Front, side, bottom
Feed Length	Standard length 3.28'
End Cap	Injected/silicone
Mounting	Clips or channels (rigid or bendable)
Storage Temperature	-25~60°C (-13~140°F)
Ambient Temperature	-25~35°C (-13~95°F)
Max. Production Length	98.43ft (30m)

Performance & Electrical

Voltage	24VDC (23.5Vmin, 24.5Vmax)
Beam Angle	120°
MacAdam	3 steps
Efficacy (lm/W)	30lm/W
CRI	N/A
Lumen Maintenance	> 30,000 hours
IP Rating	IP67
Resistance	UV, solvent, saltwater, flame
Dimming	DMX
Control Protocol	N/A
Warranty	5 years

Certification & Safety

Certifications	UL
Environment	Dry, damp or wet locations

Lumen/ft	4.57W
■ R	34
■ G	91
■ B	15
■ RGB	137
Max. Run Length (ft)	16.4

LINIO NEON 1615 SV RGB

Outdoor · RGB · Field Cuttable



Order Code

Series	Temp./Color	Power	Feed Entry	Connector Wire	End Cap	Length (ft)
LN1615SV	RGB	457=4.57W	FF=Front + Front BB=Bottom + Bottom SS=Side + Side FC=Front + Closed FB=Front + Bottom BF=Bottom+Front FLS=Front + Left Side FRS=Front + Right Side BC=Bottom + Closed BLS=Bottom + Left Side BRS=Bottom + Right Side LSC=Left Side + Closed RSC=Right Side + Closed	OW=Open wire 3.28' MFCW=Male & female connector with 0.98' white cable MFCB=Male & female connector with 0.98' black cable	IJ=Injected end cap (IP67) * Factory made only SEC=Silicone end cap (IP67) * End caps are added by default	Min. - 2.46" Max. - 98.4' Cut Inc. - 2.46"

Example: LN1615SV-RGB-457-FF-OW-IJ-11'

* Customizable—Contact Beamever representatives

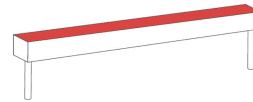
*This product is not rated as submersible. Do not install in a location where water may pool or collect.

Feed Entry Options

Front+Front feed entry (FF)



Bottom+Bottom feed entry (BB)



Side+Side feed entry (SS)



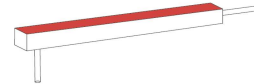
Front + Closed feed entry (FC)



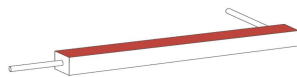
Front+Bottom feed entry (FB)



Bottom+Front feed entry (BF)



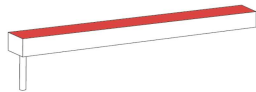
Front+Left Side feed entry (FLS)



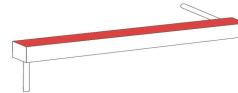
Front+Right Side feed entry (FRS)



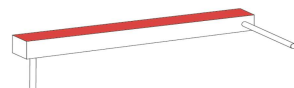
Bottom+Closed feed entry (BC)



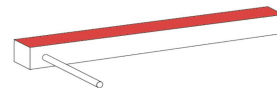
Bottom+Left Side feed entry (BLS)



Bottom+Right Side feed entry (BRS)



Left Side+Closed feed entry (LSC)



Right Side+Closed feed entry (RSC)

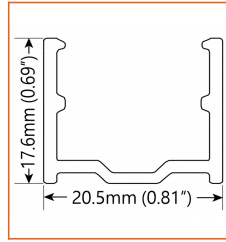
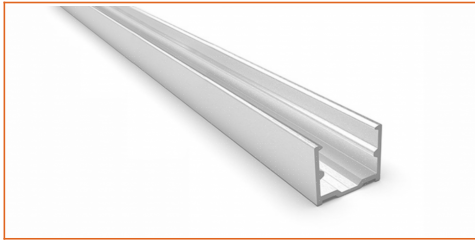


LINIO NEON 1615 SV RGB

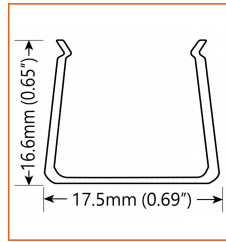
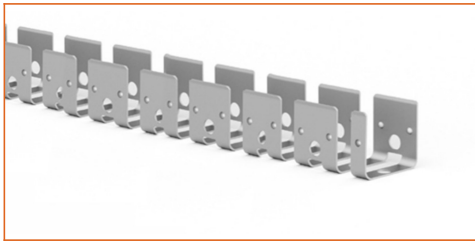
Outdoor · RGB · Field Cuttable



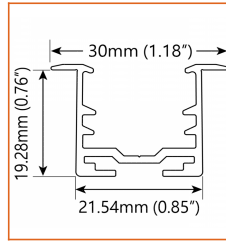
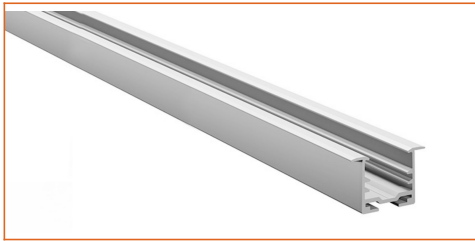
Mounting Options



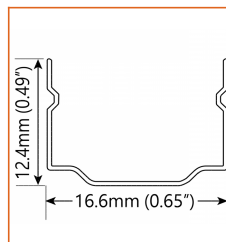
* Standard length is 3.28'/pcs.



* Standard length is 1.64'/pcs.



* Standard length is 3.28'/pcs.



* Recommend use 1 mounting clip for 1' of neon.

Name	Straight aluminum channel
Code	LN1615-SC
Material	Aluminum
Mounting style	Surface mounted
Length	3.28' (1m)
Width	0.81" (20.5mm)
Height	0.69" (17.6mm)
Internal width	/

Name	Bendable channel
Code	LN1615-BC
Material	Stainless Steel
Mounting style	Surface mounted
Length	1.64' (0.5m)
Width	0.69" (17.5mm)
Height	0.65" (16.6mm)
Internal Width	/

Name	Recessed straight channel
Code	LN1615-RSC
Material	Aluminum
Mounting style	Recessed mounted
Length	3.28' (1m)
Width	1.18" (30mm)
Height	0.76" (19.28)
Internal width	/

Name	Mounting clip
Code	LN1615-CL
Material	Stainless Steel
Mounting style	Surface mounted
Length	0.79" (20mm)
Width	0.65" (16.6mm)
Height	0.49" (12.4mm)
Internal Width	/

LINIO NEON 1615 SV RGB

Outdoor · RGB · Field Cuttable



Driver Options

Code	Max Load	Input	Output	Dimmable	Class 2	Environment	Size (L*W*H)
Non Dimmable							
KV-24030-ASW	30W	100-277VAC	24V	No	Yes	Dry/damp	6.10*2.12*0.78 inch
KV-24060-ASW	60W	100-277VAC	24V	No	Yes	Dry/damp	7.00*2.40*0.94 inch
KV-24096-ASW	96W	100-277VAC	24V	No	Yes	Dry/damp/wet	9.05*2.75*1.69 inch
KV-24150-ASW	150W	100-277VAC	24V	No	No	Dry/damp/wet	10.07*3.07*1.85 inch
KV-24200-ASW	200W	100-277VAC	24V	No	No	Dry/damp/wet	10.07*3.07*1.85 inch
KV-24300-ASW	300W	100-277VAC	24V	No	No	Dry/damp/wet	10.86*3.07*1.85 inch
DMX512 Dimmable							
KVX-24096-3C-A	96W	100-277VAC	24V	Yes	Yes	Dry/damp/wet	9.05*3.07*0.98 inch
KVX-24150-3C-A	150W	100-277VAC	24V	Yes	No	Dry/damp/wet	10.9*3.07*0.98 inch
KVX-24200-3C-A	200W	100-277VAC	24V	Yes	No	Dry/damp/wet	10.9*3.07*0.98 inch
KVX-24300-3C-A	300W	100-277VAC	24V	Yes	No	Dry/damp/wet	11.85*3.07*0.98 inch

* Please refer to the spec sheet of each power supply for more detailed information

DMX Decoder Options

Code	Description
LT-903	3 channels output, up to 576W output power
LT-912	12 channels output, up to 1152W output power
LT-924	24 channels output, up to 1728W output power

* Please refer to the spec sheet of each decoder for more detailed information

Controller Options

Code	Description
DINA-DR micro	DMX 60 channels, DMX Stand Alone controller with 10 scenes, USB connectivity for programming
SLESA-U9	DMX 256 channels, USB connection, stand alone mode with 1 area and 20 scenes
STICK-GA2	DMX 512 channels, ready to use (pre-loaded with 8 scenes and 170 RGB fixtures)
STICK-CW4	DMX 1024 channels, up to 36 scenes stored and directly recalled via 6 touch sensitive buttons

* Please refer to the spec sheet of each controller for more detailed information

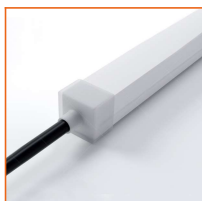
Accessories Options (Optional, purchase for extra)



Name Silicone closed end cap

Code LN1615-SEC-C

Closed silicone end cap



Name Silicone front end cap

Code LN1615-SEC-F-4P

Silicone end cap front entry with 11.81" black cable, 4 pin



Name Silicone side end cap

Code LN1615-SEC-S-4P

Silicone end cap side entry with 11.81" black cable, 4 pin



Name Silicone bottom end cap

Code LN1615-SEC-B-4P

Silicone end cap bottom entry with 11.81" black cable, 4 pin



Name Male and female connectors

Code MFC-4P-67-B

Male and female connectors with 11.81" black cable, 4 pin



Name Male and female connectors

Code MFC-4P-67-W

Male and female connectors with 11.81" white cable, 4 pin

LINIO NEON 1615 SV RGB

Outdoor · RGB · Field Cuttable



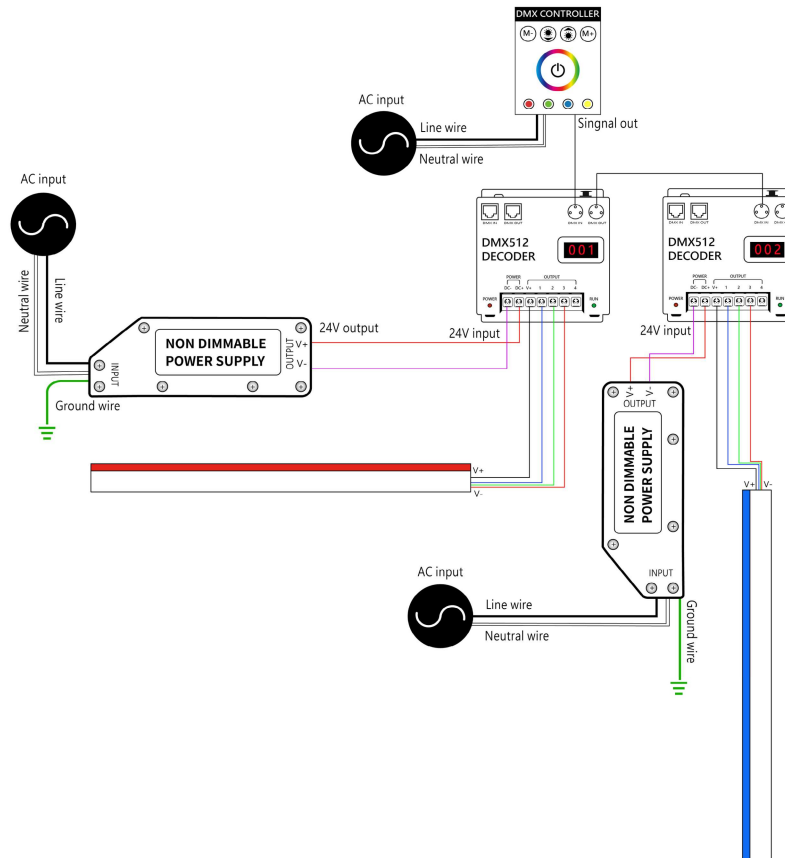
Name Extension connectors
 Code ETC-4P-67-1M
 Extension Male and female connectors with 1m(3.28ft) white cable, 4 pin



Name Extension connectors
 Code ETC-4P-67-5M
 Extension Male and female connectors with 5m(16.4ft) white cable, 4 pin

Wiring Diagram

Nicolaudie + DMX Control System



Nicolaudie + DMX Driver System

