

AERO TAPE MIRROR

Indoor · Tunable White · CRI95+

Beamever

Features

- Field cuttable & joinable
- CRI 95+ for true-to-life color accuracy
- Tunable white with a wide CCT range from 2700K to 6500K
- Slim and elegant, ideal for indoor applications
- 3M tape on the back makes it easy to install
- 5 years warranty



Fixture type	
Project name	
Project phase	
Date	



Dimension & Bending



Physical

PCB Width	0.39" (10mm)
LED Pitch	0.33" (8.3mm)
Cutting Interval	1.97" (50mm)
LED Brand	Lumileds
LED Size	2835
LED Quantity	36 LEDs/ft (120 LEDs/m)
Adhesive Type	Yellow 3M tape
Feed Entry	Front
Feed Length	Standard length 3.28'
Storage Temperature	0~60°C (32~140°F)
Ambient Temperature	-20~40°C (-4~104°F)
Max Production Length	164ft (50m)

Performance & Electrical

Voltage	24VDC (23.5Vmin, 24.5Vmax)
Beam Angle	120°
MacAdam	3 steps
Efficacy (lm/W)	95lm/W @4000K
CRI	> 95
Lumen Maintenance	> 50,000 hours
IP Rating	IP20
Resistance	UV, solvent, saltwater, flame
Dimming	Triac, ELV, PWM, 0-10V, DMX
Warranty	5 years

Certification & Safety

Certifications	UL
Environment	Dry location

Lumen/ft	5.64W
■ 2700K	255
● 6500K	277
■ 2700K+6500K	536
Max. Run Length (ft)	32.8

Order Code

Series	Temp./Color	Power	Connector Wire	IP Rating	Length (ft)
AEROM	2765=2700K+6500K	564=5.64W	OW=Open wire 3.28' MFC=Male & female connector 0.98'	20=IP20	Min. - 1.97" Max. - 164' Cut Inc. - 1.97"

Example: AEROM-2765-564-OW-20-11'

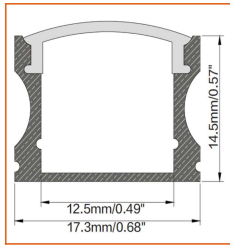
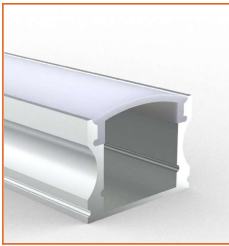
* Customizable—Contact Beamever representatives

AERO TAPE MIRROR

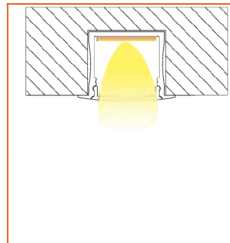
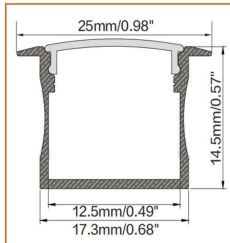
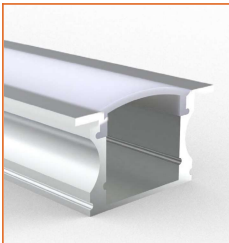
Indoor · Tunable White · CRI95+



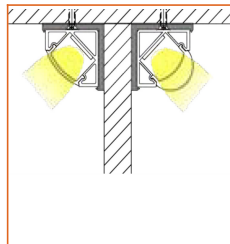
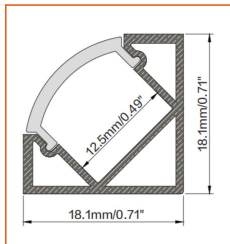
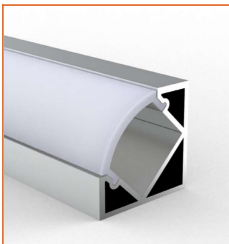
Mounting Options



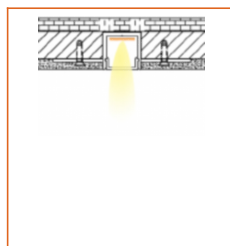
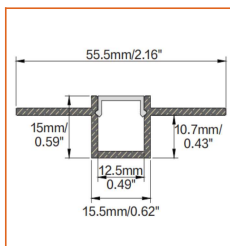
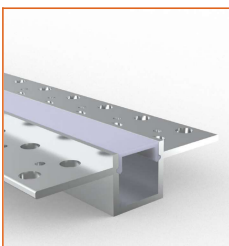
* Standard length is 3.28'/pcs.



* Standard length is 3.28'/pcs.



* Standard length is 3.28'/pcs.



* Standard length is 3.28'/pcs.

* For more options, please refer to "Beamever Profile Spec Sheet"

Name	Straight aluminum channel
Code	BE1202
Material	Alluminum
Mounting style	Surface mounted
Length	3.28' (1m)
Width	0.68" (17.3mm)
Height	0.57" (14.5mm)
Internal width	0.49" (12.5mm)

Name	Straight aluminum channel
Code	BE1201
Material	Alluminum
Mounting style	Recessed mounted
Length	3.28' (1m)
Width	0.68" (17.3mm)
Height	0.57" (14.5mm)
Internal width	0.49" (12.5mm)

Name	Straight aluminum channel
Code	BE1203
Material	Alluminum
Mounting style	Angled mounted
Length	3.28' (1m)
Width	0.71" (18.1mm)
Height	0.71" (18.1mm)
Internal width	0.49" (12.5mm)

Name	Straight aluminum channel
Code	BE5615
Material	Alluminum
Mounting style	Mud-in
Length	3.28' (1m)
Width	0.62" (15.5mm)
Height	0.59" (15mm)
Internal width	0.49" (12.5mm)

Driver Options

Code	Max Load	Input	Output	Dimmable	Class 2	Environment	Size (L*W*H)
LM-100-24-U2A2	100W	100-277VAC	24V	Yes	No	Dry	13.86 x 1.69 x 1.18 inch

* Please refer to the spec sheet of each power supply for more detailed information

AERO TAPE MIRROR

Indoor · Tunable White · CRI95+



Accessories Options (Optional)



Name Strip to strip connector

Code AERO20-STC-3P-10

Strip to strip connector, 3 pin, IP20



Name Strip to strip jumper connector

Code AERO20-STSJ-3P-10

Strip to strip jumper connector with 5.91" cable, 3 pin, IP20



Name Strip to cable connector

Code AERO20-STC-3P-10

Strip to cable connector with 5.91" cable, 3 pin, IP20



Name L-shaped connector

Code AERO20-L-3P-10

L-shaped connector, 3 pin, IP20



Name Male & female connector

Code MFC-3P-20

Male and female connector with 11.81" cable, IP20, 3 pin



Name Male & female DC connector

Code MFC-DC-44

Male and female DC connector with 11.81" cable, IP44



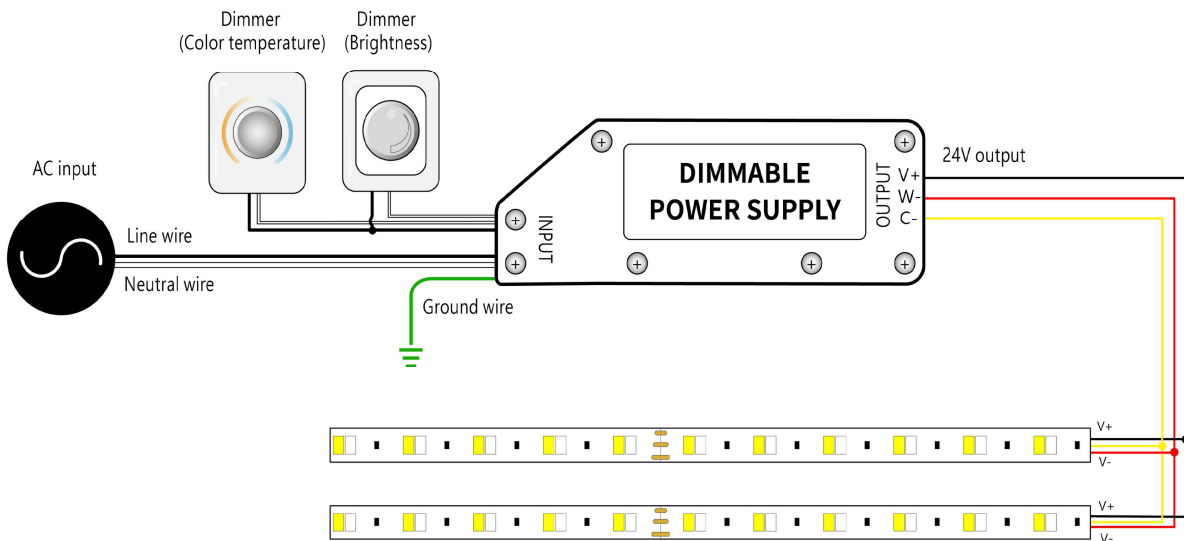
Name VHB 3M adhesive tape

Code VHB

VHB 3M adhesive back tape, stronger stickiness.

Wiring Diagram

Dimmable



* Dimmers need to be purchased separately.