

LINIO NEON 360° TW

Indoor · All-direction Bending · 360° Emitting

Beamever

Features

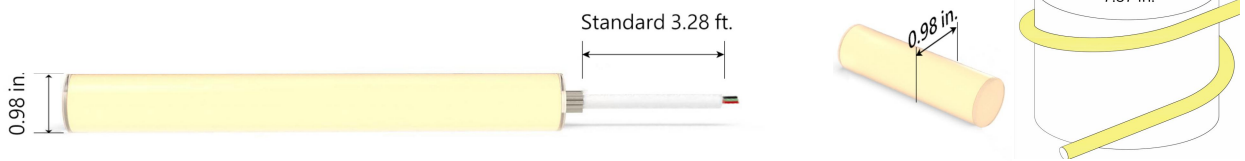
- Low voltage 24V DC
- Diameter of 25mm (0.98")
- Multiple mounting accessories for any design needs
- 360° emitting provides unparalleled creative possibilities
- High-grade Dow Corning silicone
- High-quality LED chips



Fixture type	
Project name	
Project phase	
Date	



Dimension & Bending



Physical

Dimensions	0.98" (diameter)
Bend Direction	All-direction bending
Bend Diameter	7.87" (200mm)
Cutting Interval	1.97" (50mm)
Field Cuttable	No
Housing Material	Dow Corning
Housing Technique	Tubing
Body Color	White
Finish	Matte
Feed Entry	Front, side
Feed Length	Standard length 3.28'
End Cap	Injected (Factory made only)
Mounting	18 types of mounting accessories
Storage Temperature	-25~60°C (-13~140°F)
Ambient Temperature	-25~45°C (-13~113°F) @3.05W
Max. Production Length	16.4ft (5m)

Performance & Electrical

Voltage	24VDC (23.5Vmin, 24.5Vmax)
Beam Angle	360°
MacAdam	3 steps
Efficacy (lm/W)	44.3m/W @2700K+4000K 3.05W
CRI	Ra>90
Lumen Maintenance	> 54,000 hours
IP Rating	IP65
Resistance	UV, solvent, saltwater, flame
Dimming	Triac, ELV, PWM, 0-10V, DMX
Control Protocol	N/A
Warranty	5 years

Certification & Safety

Certifications	UL
Environment	Dry or damp locations

Lumen/ft	3.05W
■ 2700K	45
■ 5000K	74
■ 2700K+5000K	135
Max. Run Length (ft)	16.4

LINIO NEON 360° TW

Indoor · All-direction Bending · 360° Emitting



Order Code

Series	Temp./Color	Power	Feed Entry	Connector Wire	End Cap	Length (ft)
LN360	2750=2700K+50 00K	305=3.05W	FC=Front + Closed SC=Side+ Closed *Only available for feed entry in one side	OW=Open wire 3.28' MLC=Male connector 0.98' FLC=Female connector 0.98'	IJ=Injected end cap (IP65) * End caps are added by default	Min. - 1.97" Max. run - 16.4' Cut Inc. - 1.97"

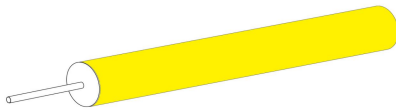
Example: LN360-2750-305-FC-OW-IJ-11'

* Customizable—Contact Beamever representatives

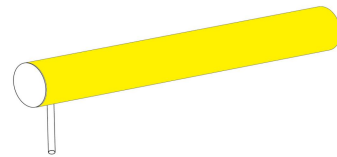
*This product is not rated as submersible. Do not install in a location where water may pool or collect.

Feed Entry Options

Front + Closed feed entry (FC)



Side + Closed feed entry (SC)

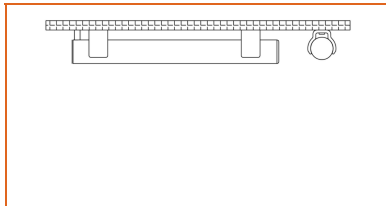


Mounting Options

Surface mount clear bracket - open clip

Code LN360-SFC-O

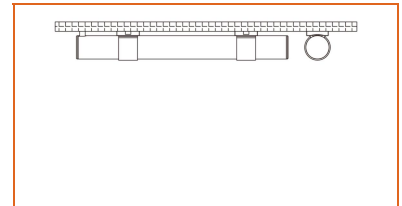
Mounting Type



Surface mount clear bracket - closed clip

Code LN360-SFC-C

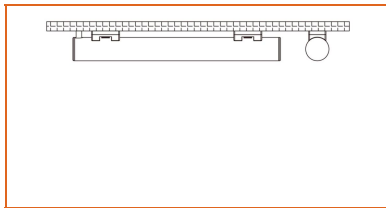
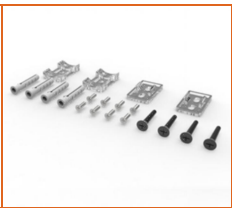
Mounting Type



Surface mount clear bracket - low profile clip

Code LN360-SFC-L

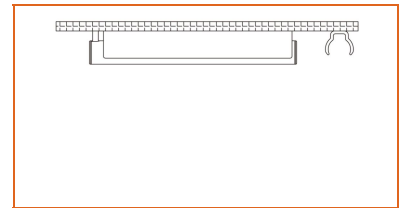
Mounting Type



Surface mount clear bracket - PC channel

Code LN360-SFC-PC

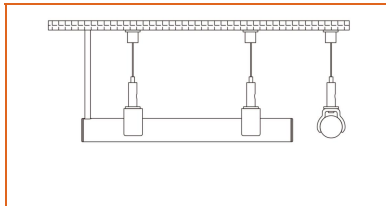
Mounting Type



Suspended mount clear bracket - open clip

Code LN360-SPC-O

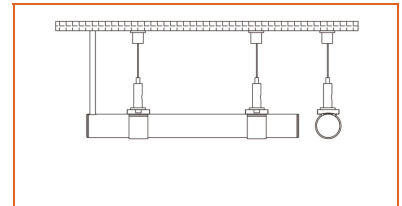
Mounting Type



Suspended mount clear bracket - closed clip

Code LN360-SPC-C

Mounting Type



LINIO NEON 360° TW

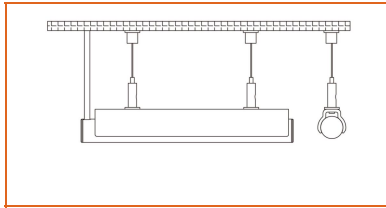
Indoor · All-direction Bending · 360° Emitting



Suspended mount clear bracket - PC channel

Code LN360-SPC-PC

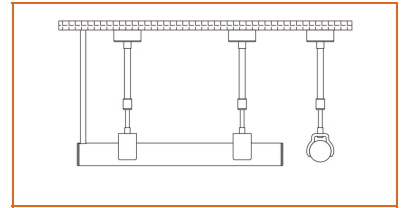
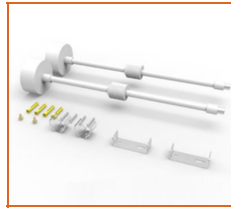
Mounting Type



Telescoping clear bracket - open clip (Length: 50-99cm)

Code LN360-TLC-O

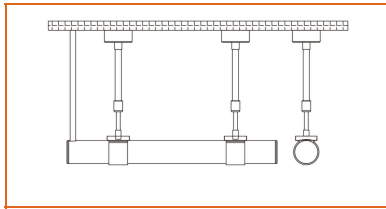
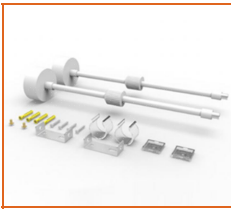
Mounting Type



Telescoping clear bracket - closed clip (Length: 50-99cm)

Code LN360-TLC-C

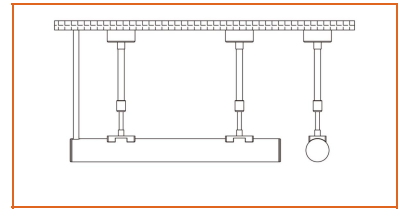
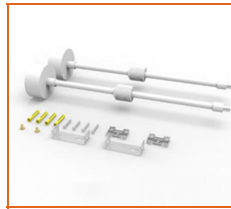
Mounting Type



Telescoping clear bracket - low profile clip (Length: 50-99cm)

Code LN360-TLC-L

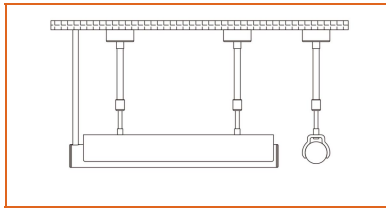
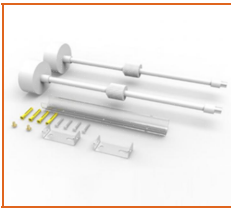
Mounting Type



Telescoping clear bracket - PC channel (Length: 50-99cm)

Code LN360-TLC-PC

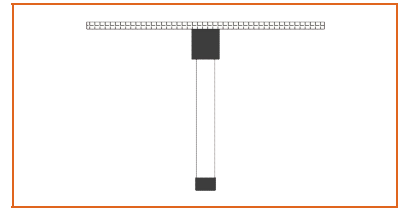
Mounting Type



Vertical metal flush surface mount bracket - black

Code LN360-VB

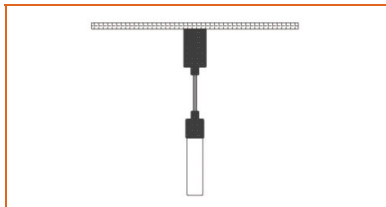
Mounting Type



Vertical pendant suspended mount bracket - black

Code LN360-VSB

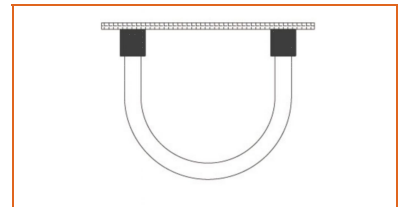
Mounting Type



U-shaped metal flush mounting bracket - black

Code LN360-UB

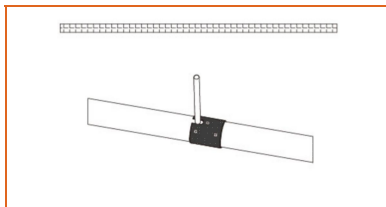
Mounting Type



Metal joiner bracket - black (side cable entry only)

Code LN360-JNB-S

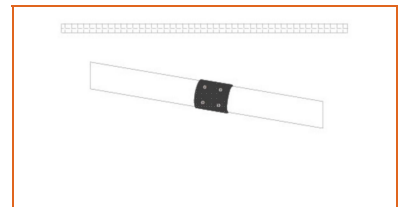
Mounting Type



Metal joiner bracket - black (closed end cap)

Code LN360-JNB-C

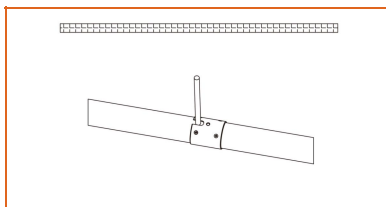
Mounting Type



Joiner bracket - clear (side cable entry only)

Code LN360-JNC-S

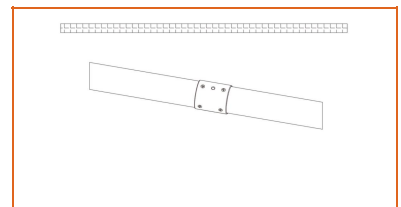
Mounting Type



Joiner bracket - clear (closed end cap)

Code LN360-JNC-C

Mounting Type



LINIO NEON 360° TW

Indoor · All-direction Bending · 360° Emitting



Driver Options

Code	Max Load	Input	Output	Dimmable	Class 2	Environment	Size (L*W*H)
LM-100-24-U2A2	100W	100-277VAC	24V	Yes	No	Dry	13.86 x 1.69 x 1.18 inch

* Please refer to the spec sheet of each power supply for more detailed information

Accessories Options (Optional, purchase for extra)



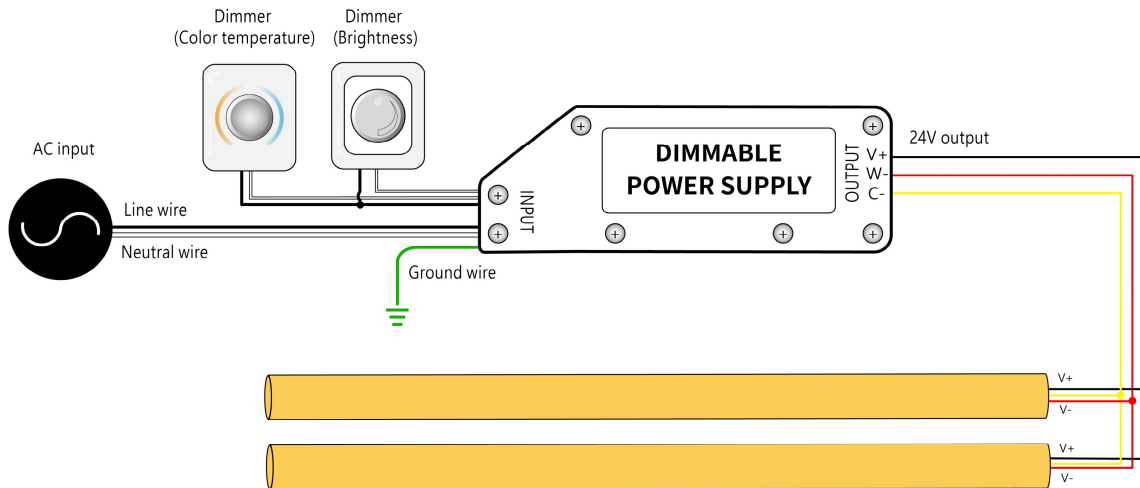
Name Male and female connectors

Code MFC-3P-67-W

Male and female connectors with 11.81" white cable, IP67, 3 pin

Wiring Diagram

Dimmable



* Dimmers need to be purchased separately.