

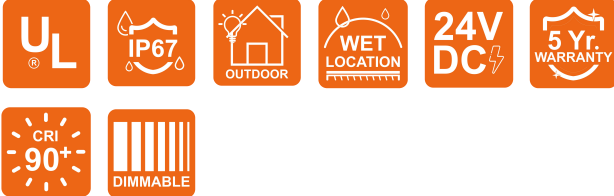
# NOVA TAPE IP67

Outdoor · White · Dot-free

# Beamever

## Features

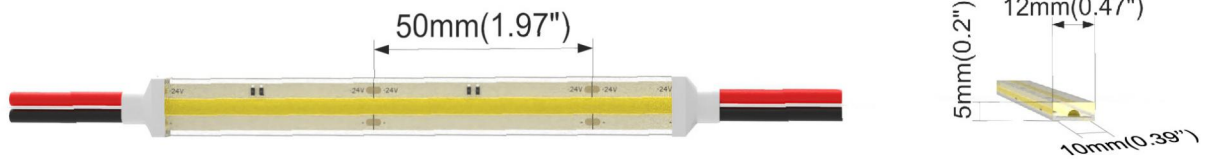
- IP67 rated, ideal for indoor and outdoor uses
- Channel-free, easy to mount on smooth surface
- Slim and elegant, ideal for indoor applications
- 3M tape on the back makes it easy to install
- 5 years warranty
- Available in a variety of CCT color options



|               |  |
|---------------|--|
| Fixture type  |  |
| Project name  |  |
| Project phase |  |
| Date          |  |



## Dimension



## Physical

|                       |                          |
|-----------------------|--------------------------|
| PCB Width             | 0.47" (12mm)             |
| LED Pitch             | N/A                      |
| Cutting Interval      | 1.97" (50mm)             |
| LED Brand             | Sanan                    |
| LED Type              | COB                      |
| LED Quantity          | 146 LEDs/ft (480 LEDs/m) |
| Housing Material      | N/A                      |
| Housing Technique     | Co-extrusion             |
| Adhesive Type         | Yellow 3M tape           |
| Feed Entry            | Front                    |
| Feed Length           | Standard length 3.28'    |
| Storage Temperature   | -25~60°C (-13~140°F)     |
| Ambient Temperature   | -20~45°C (-4~113°F)      |
| Max Production Length | 32.8ft (10m)             |

## Performance & Electrical

|                   |                                  |
|-------------------|----------------------------------|
| Voltage           | 24VDC (23.5Vmin, 24.5Vmax)       |
| Beam Angle        | 150°                             |
| MacAdam           | 3 steps                          |
| Efficacy (lm/W)   | 100lm/W @4000K                   |
| CRI               | Ra90                             |
| Lumen Maintenance | > 54,000 hours                   |
| IP Rating         | IP67                             |
| Resistance        | UV, solvent, saltwater, flame    |
| Dimming           | Triac, ELV, PWM, 0-10V, DMX, SPI |
| Control Protocol  | N/A                              |
| Warranty          | 5 years                          |

## Certification & Safety

|                |                             |
|----------------|-----------------------------|
| Certifications | UL                          |
| Environment    | Dry, damp and wet locations |

| Lumen/ft             | 1.52W | 3.05W | 4.57W |
|----------------------|-------|-------|-------|
| ■ 2700K              | 134   | 248   | 381   |
| ■ 3000K              | 143   | 253   | 412   |
| ■ 4000K              | 159   | 273   | 448   |
| ■ 6500K              | 155   | 311   | 445   |
| Max. Run Length (ft) | 26.2  | 19.7  | 16.4  |

\*Other color temperatures and single chromatic colors customizable.

# NOVA TAPE IP67

Outdoor · White · Dot-free



## Order Code

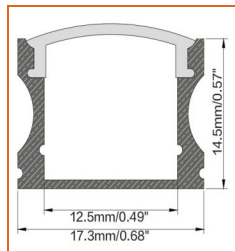
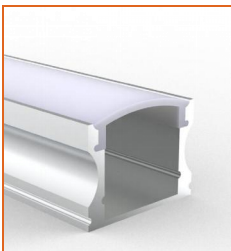
| Series | Temp./Color                                  | Power                               | Feed Entry                            | Connector Wire  | IP Rating | Length (ft)   |
|--------|--|-------------------------------------|---------------------------------------|---|-----------|---|
| NOVA   | 27=2700K<br>30=3000K<br>40=4000K<br>65=6500K | 152=1.52W<br>305=3.05W<br>457=4.57W | FF=Front + Front<br>FC=Front + Closed | OW=Open wire 3.28'<br>MFC=Male & female connector 0.98' | 67=IP67   | Min. - 1.97"<br>Max. run<br>- 26.2'@1.52W<br>- 19.7'@3.05W<br>- 16.4'@4.57W<br>Cut Inc. - 1.97" |

Example: NOVA-30-305-OW-67-11'

\* Customizable—Contact Beamever representatives

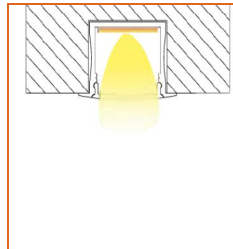
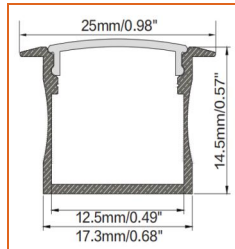
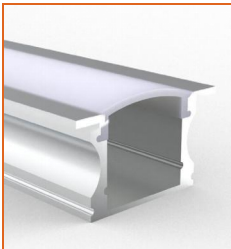
\*This product is not rated as submersible. Do not install in a location where water may pool or collect.

## Mounting Options



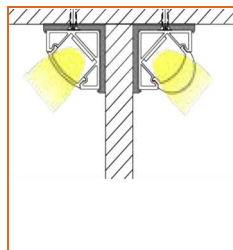
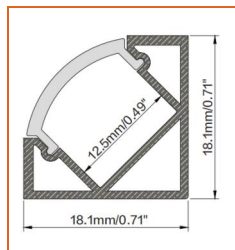
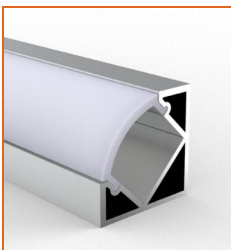
\* Standard length is 3.28'/pcs.

|                |                           |
|----------------|---------------------------|
| Name           | Straight aluminum channel |
| Code           | BE1202                    |
| Material       | Aluminum                  |
| Mounting style | Surface mounted           |
| Length         | 3.28' (1m)                |
| Width          | 0.68" (17.3mm)            |
| Height         | 0.57" (14.5mm)            |
| Internal width | 0.49" (12.5mm)            |



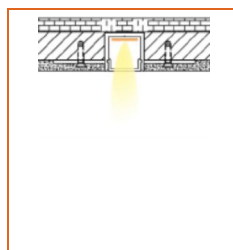
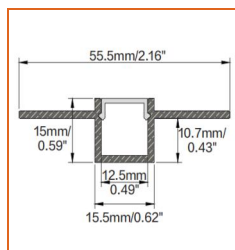
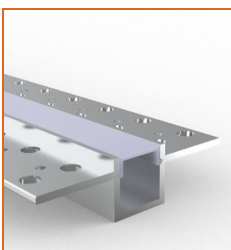
\* Standard length is 3.28'/pcs.

|                |                           |
|----------------|---------------------------|
| Name           | Straight aluminum channel |
| Code           | BE1201                    |
| Material       | Aluminum                  |
| Mounting style | Recessed mounted          |
| Length         | 3.28' (1m)                |
| Width          | 0.68" (17.3mm)            |
| Height         | 0.57" (14.5mm)            |
| Internal width | 0.49" (12.5mm)            |



\* Standard length is 3.28'/pcs.

|                |                           |
|----------------|---------------------------|
| Name           | Straight aluminum channel |
| Code           | BE1203                    |
| Material       | Aluminum                  |
| Mounting style | Angled mounted            |
| Length         | 3.28' (1m)                |
| Width          | 0.71" (18.1mm)            |
| Height         | 0.71" (18.1mm)            |
| Internal width | 0.49" (12.5mm)            |



\* Standard length is 3.28'/pcs.

|                |                           |
|----------------|---------------------------|
| Name           | Straight aluminum channel |
| Code           | BE5615                    |
| Material       | Aluminum                  |
| Mounting style | Mud-in                    |
| Length         | 3.28' (1m)                |
| Width          | 0.62" (15.5mm)            |
| Height         | 0.59" (15mm)              |
| Internal width | 0.49" (12.5mm)            |

\* For more options, please refer to "Beamever Profile Spec Sheet"

# NOVA TAPE IP67

Outdoor · White · Dot-free

# Beamever

## Driver Options

| Code  | Max Load | Input      | Output | Dimmable | Class 2 | Environment  | Size (L*W*H)          |
|---|----------|------------|--------|----------|---------|--------------|-----------------------|
| <b>Non Dimmable</b>   |          |            |        |          |         |              |                       |
| KV-24030-ASW  | 30W      | 100-277VAC | 24V    | No       | Yes     | Dry/damp     | 6.10*2.12*0.78 inch   |
| KV-24060-ASW  | 60W      | 100-277VAC | 24V    | No       | Yes     | Dry/damp     | 7.00*2.40*0.94 inch   |
| KV-24096-ASW  | 96W      | 100-277VAC | 24V    | No       | Yes     | Dry/damp/wet | 9.05*2.75*1.69 inch   |
| KV-24150-ASW  | 150W     | 100-277VAC | 24V    | No       | No      | Dry/damp/wet | 10.07*3.07*1.85 inch  |
| KV-24200-ASW  | 200W     | 100-277VAC | 24V    | No       | No      | Dry/damp/wet | 10.07*3.07*1.85 inch  |
| KV-24300-ASW  | 300W     | 100-277VAC | 24V    | No       | No      | Dry/damp/wet | 10.86*3.07*1.85 inch  |
| <b>Phase cut /Triac Dimmable</b>                                |          |            |        |          |         |              |                       |
| KVF-24030-TDW   | 30W      | 100-277VAC | 24V    | Yes      | Yes     | Dry/damp     | 6.10*2.12*0.78 inch   |
| KVF-24060-TDW   | 60W      | 100-277VAC | 24V    | Yes      | Yes     | Dry/damp     | 7*2.4*0.94 inch       |
| KVF-24096-TDW   | 96W      | 100-277VAC | 24V    | Yes      | Yes     | Dry/damp/wet | 9.05*2.75*1.69 inch   |
| KVF-24150-TDW   | 150W     | 100-277VAC | 24V    | Yes      | No      | Dry/damp/wet | 10*3.07*1.85 inch     |
| KVF-24200-TDW   | 200W     | 100-277VAC | 24V    | Yes      | No      | Dry/damp/wet | 10*3.07*1.85 inch     |
| KVF-24300-TDW   | 300W     | 100-277VAC | 24V    | Yes      | No      | Dry/damp/wet | 10.87*3.07*1.85 inch  |
| <b>4 in 1 Dimmable (0-10V/1-10V/Potentiometer/10VPWM)</b>       |          |            |        |          |         |              |                       |
| KVD-24030-DIM   | 30W      | 100-277VAC | 24V    | Yes      | Yes     | Dry/damp     | 6.10*2.12*0.78 inch   |
| KVD-24060-DIM   | 60W      | 100-277VAC | 24V    | Yes      | Yes     | Dry/damp     | 7.01*2.40*0.94 inch   |
| KVD-24096-DIM   | 96W      | 100-277VAC | 24V    | Yes      | Yes     | Dry/damp/wet | 9.05*2.75*1.69 inch   |
| KVD-24150-DIM   | 150W     | 100-277VAC | 24V    | Yes      | No      | Dry/damp/wet | 10.08*3.07*1.85 inch  |
| KVD-24200-DIM   | 200W     | 100-277VAC | 24V    | Yes      | No      | Dry/damp/wet | 13.38*11.02*7.28 inch |
| KVD-24300-DIM   | 300W     | 100-277VAC | 24V    | Yes      | No      | Dry/damp/wet | 10.87*3.07*1.89 inch  |
| <b>5 in 1 Dimmable (Triac/0-10V/1-10V/Potentiometer/10VPWM)</b> |          |            |        |          |         |              |                       |
| KVG-24030-DW  | 30W      | 100-277VAC | 24V    | Yes      | Yes     | Dry/damp     | 6.1*2.13*0.79 inch    |
| KVG-24060-DW  | 60W      | 100-277VAC | 24V    | Yes      | Yes     | Dry/damp     | 7.01*2.41*0.94 inch   |
| KVG-24096-DW  | 96W      | 100-277VAC | 24V    | Yes      | Yes     | Dry/damp/wet | 9.06*2.76*1.69 inch   |
| KVG-24150-DW  | 150W     | 100-277VAC | 24V    | Yes      | No      | Dry/damp/wet | 10.08*3.07*1.85 inch  |
| KVG-24200-DW  | 200W     | 100-277VAC | 24V    | Yes      | No      | Dry/damp/wet | 10.08*3.07*1.85 inch  |
| KVG-24300-DW  | 300W     | 100-277VAC | 24V    | Yes      | No      | Dry/damp/wet | 10.87*3.07*1.89 inch  |

\* Please refer to the spec sheet of each power supply for more detailed information

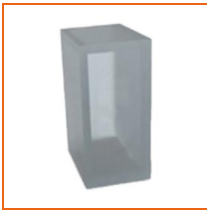
\* KVF, KVD, KVG series are available in junction box enclosure, you can select it by adding "J" at the end of the driver code, e.g. KVF-24030-TDWJ, and refer to its standalone spec sheet on our website.

# NOVA TAPE IP67

Outdoor · White · Dot-free



## Accessories Options (Optional)



Name Silicone closed end cap

Code NOVA67-SEC-C

Silicone closed end cap for 0.47" (12mm) strip



Name Mounting clip

Code NOVA67-CL

Mounting clip for 0.47" (12mm) strip



Name JST male & female connector

Code JST-2P-67

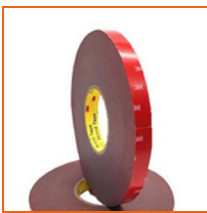
JST male and female connector with 7.87" (20cm) cable, IP67, 2 pin



Name Silicone glue

Code SG

Silicone glue



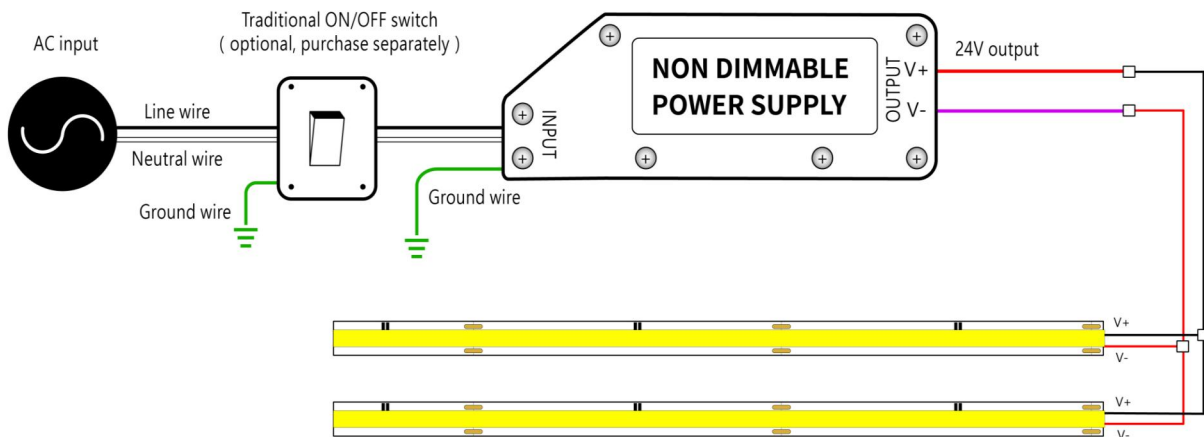
Name VHB 3M adhesive tape

Code VHB

VHB 3M adhesive back tape, stronger stickiness.

## Wiring Diagram

### Non Dimmable



### Dimmable

