

GRAZE DUAL

Indoor · Dual Bending · Flexible

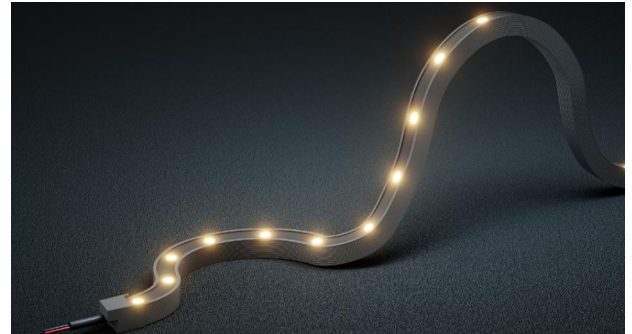
Beamever

Features

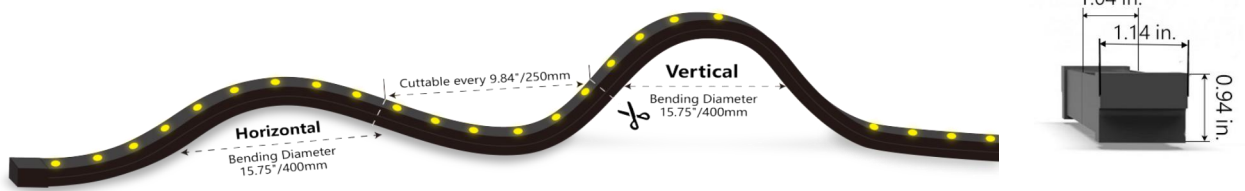
- Various beam angles 15°, 30°, 50°, 18*20°, 20*35°, 20*55°
- Low voltage 24V DC
- Dual bending flexibility different from rigid wallwasher
- High-grade Dow Corning silicone
- IP65 rated, ideal for indoor uses
- 5 years warranty



Fixture type	
Project name	
Project phase	
Date	



Dimension & Bending



Physical

Dimensions	1.14" x 0.94" (width x height)
Bend Direction	Dual bending
Bend Diameter	15.75" (400mm)
Cut Interval	9.84" (250mm)
Field Cuttable	No
Housing Material	Dow Corning
Housing Technique	Co-extrusion
Body Color	Grey
Finish	N/A
Feed Entry	Bottom
Feed Length	Standard length 3.28'
End Cap	Silicone
Mounting	Clips or channel (rigid)
Storage Temperature	-25~40°C (-13~104°F)
Ambient Temperature	-40~45°C (-40~113°F) @7.32W
Max. Production Length	16.4ft (5m)

Performance & Electrical

Voltage	24VDC (23.5Vmin, 24.5Vmax)
Beam Angle	15°, 30°, 50°, 18*20°, 20*35°, 20*55°
MacAdam	3 steps
Efficacy (lm/W)	76.6lm/W @7.32W
CRI	Ra80
Lumen Maintenance	> 30,000 hours
IP Rating	IP65
Resistance	UV, solvent, saltwater, flame
Dimming	Triac, ELV, PWM, 0-10V, DMX
Control Protocol	N/A
Warranty	5 years

Certification & Safety

Certifications	UL
Environment	Dry or damp locations

Lumen/ft	7.32W
■ 2700K	465
■ 3000K	482
■ 4000K	471
■ 6500K	451
Max. Run Length (ft)	16.4

GRAZE DUAL

Indoor · Dual Bending · Flexible



Order Code

Series	Temp./Color	Beam Angle	Power	Feed Entry	Connector Wire	End Cap	Length (ft)
LNG	27=2700K 30=3000K 40=4000K 65=6500K	15=15° 30=30° 50=50° 1820=18*20° 2035=20*35° 2055=20*55°	732=7.32W	BB=Bottom + Bottom BC=Bottom + Closed	OW=Open wire 3.28' MFCB=Male & female connector with 0.98' black cable	U=Injected end cap (IP65) * End caps are added by default	Min. - 9.84" Max. run - 16.4' Cut Inc. - 9.84"

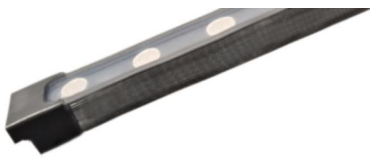
Example: LNG-27-15-732-BB-OW-SEC-11'

* Customizable—Contact Beamever representatives

*This product is not rated as submersible. Do not install in a location where water may pool or collect.

Feed Entry Options

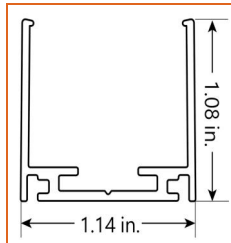
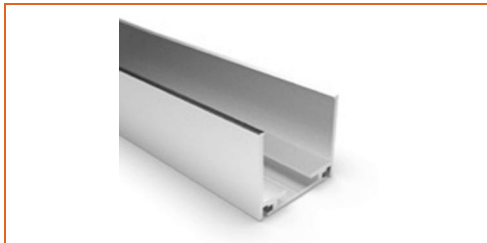
Closed feed entry (C)



Bottom feed entry (B)

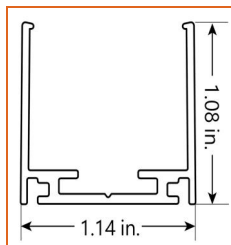


Mounting Options



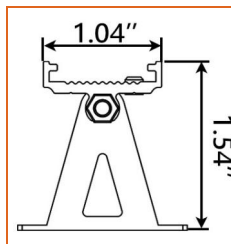
* Standard length is 3.28'/pcs.

Name	Straight Aluminum channel
Code	LNG-SC
Material	Aluminum
Mounting style	Surface mounted
Length	3.28' (1m)
Width	1.14" (29mm)
Height	1.08" (27.4mm)
Internal width	/



* Recommend use 1 mounting clip for 1' of neon.

Name	Mounting clip
Code	LNG-CL
Material	Aluminum
Mounting style	Surface mounted
Length	1.18" (30mm)
Width	1.14" (29mm)
Height	1.08" (27.4mm)
Internal Width	/



* Recommend use 1 mounting clip for 1' of neon.

Name	Adjustable clip
Code	LNG-AC
Material	Stainless steel
Mounting style	Surface mounted
Length	0.39" (10mm)
Width	1.04" (26.4mm)
Height	1.54" (39.1mm)
Internal Width	/

GRAZE DUAL

Indoor · Dual Bending · Flexible



Driver Options

Code	Max Load	Input	Output	Dimmable	Class 2	Environment	Size (L*W*H)
Non Dimmable							
KV-24030-ASW	30W	100-277VAC	24V	No	Yes	Dry/damp	6.10*2.12*0.78 inch
KV-24060-ASW	60W	100-277VAC	24V	No	Yes	Dry/damp	7.00*2.40*0.94 inch
KV-24096-ASW	96W	100-277VAC	24V	No	Yes	Dry/damp/wet	9.05*2.75*1.69 inch
KV-24150-ASW	150W	100-277VAC	24V	No	No	Dry/damp/wet	10.07*3.07*1.85 inch
KV-24200-ASW	200W	100-277VAC	24V	No	No	Dry/damp/wet	10.07*3.07*1.85 inch
KV-24300-ASW	300W	100-277VAC	24V	No	No	Dry/damp/wet	10.86*3.07*1.85 inch
Phase cut / Triac Dimmable							
KVF-24030-TDW	30W	100-277VAC	24V	Yes	Yes	Dry/damp	6.10*2.12*0.78 inch
KVF-24060-TDW	60W	100-277VAC	24V	Yes	Yes	Dry/damp	7*2.4*0.94 inch
KVF-24096-TDW	96W	100-277VAC	24V	Yes	Yes	Dry/damp/wet	9.05*2.75*1.69 inch
KVF-24150-TDW	150W	100-277VAC	24V	Yes	No	Dry/damp/wet	10*3.07*1.85 inch
KVF-24200-TDW	200W	100-277VAC	24V	Yes	No	Dry/damp/wet	10*3.07*1.85 inch
KVF-24300-TDW	300W	100-277VAC	24V	Yes	No	Dry/damp/wet	10.87*3.07*1.85 inch
4 in 1 Dimmable (0-10V/1-10V/Potentiometer/10V PWM)							
KVD-24030-DIM	30W	100-277VAC	24V	Yes	Yes	Dry/damp	6.10*2.12*0.78 inch
KVD-24060-DIM	60W	100-277VAC	24V	Yes	Yes	Dry/damp	7.01*2.40*0.94 inch
KVD-24096-DIM	96W	100-277VAC	24V	Yes	Yes	Dry/damp/wet	9.05*2.75*1.69 inch
KVD-24150-DIM	150W	100-277VAC	24V	Yes	No	Dry/damp/wet	10.08*3.07*1.85 inch
KVD-24200-DIM	200W	100-277VAC	24V	Yes	No	Dry/damp/wet	13.38*11.02*7.28 inch
KVD-24300-DIM	300W	100-277VAC	24V	Yes	No	Dry/damp/wet	10.87*3.07*1.89 inch
5 in 1 Dimmable (Triac/0-10V/1-10V/Potentiometer/10V PWM)							
KVG-24030-DW	30W	100-277VAC	24V	Yes	Yes	Dry/damp	6.1*2.13*0.79 inch
KVG-24060-DW	60W	100-277VAC	24V	Yes	Yes	Dry/damp	7.01*2.41*0.94 inch
KVG-24096-DW	96W	100-277VAC	24V	Yes	Yes	Dry/damp/wet	9.06*2.76*1.69 inch
KVG-24150-DW	150W	100-277VAC	24V	Yes	No	Dry/damp/wet	10.08*3.07*1.85 inch
KVG-24200-DW	200W	100-277VAC	24V	Yes	No	Dry/damp/wet	10.08*3.07*1.85 inch
KVG-24300-DW	300W	100-277VAC	24V	Yes	No	Dry/damp/wet	10.87*3.07*1.89 inch

* Please refer to the spec sheet of each power supply for more detailed information

* KVF, KVD, KVG series are available in junction box enclosure, you can select it by adding "J" at the end of the driver code, e.g. KVF-24030-TDWJ, and refer to its standalone spec sheet on our website.

GRAZE DUAL

Indoor · Dual Bending · Flexible



Accessories Options (Optional, purchase for extra)



Name Male and female connectors

Code MFC-2P-67-B

Male and female connectors with 11.81" black cable, IP67, 2 pin



Name Extension connectors

Code ETC-2P-67-1M

Extension Male and female connectors with 3.28ft black cable, IP67, 2 pin



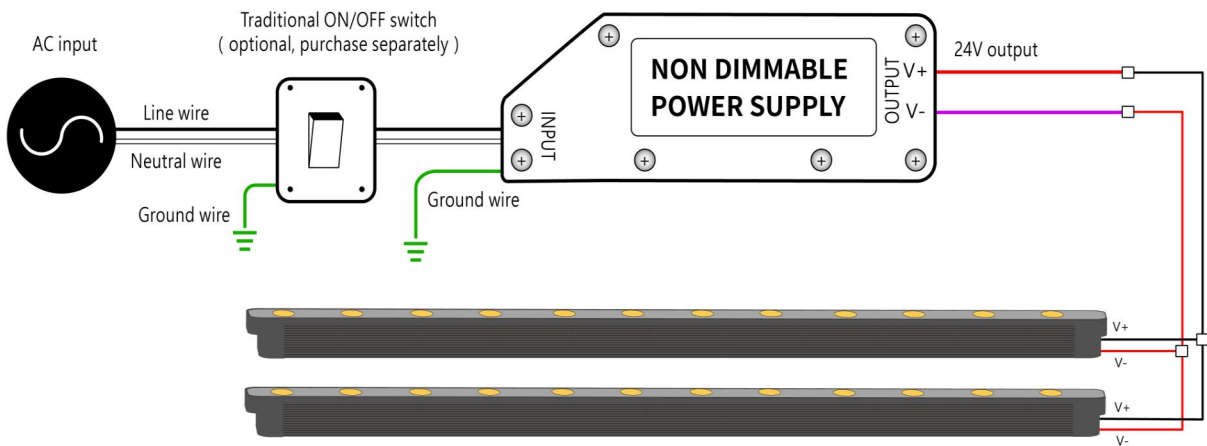
Name Extension connectors

Code ETC-2P-67-5M

Extension Male and female connectors with 16.4ft black cable, IP67, 2 pin

Wiring Diagram

Non Dimmable



Dimmable

