

GRAZE TV PRO

Outdoor · Vertical Bending · Flexible

Beamever

Features

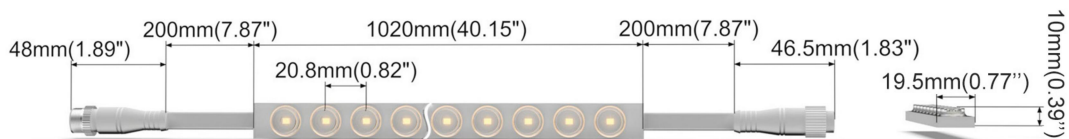
- Various beam angles 30°, 45°, 60°, 20*45°
- Discreet design (small in size and light in weight)
- Ideal flexibility for creating unique shapes and designs
- Low voltage 24V DC
- IP67 rated, ideal for outdoor uses
- PU material for UV-stablized, high temperature resistancy etc.



Fixture type	
Project name	
Project phase	
Date	



Dimension & Bending



Physical

Dimensions	0.77" x 0.39" (width x height)
Bend Direction	Vertical bending
Bend Diameter	5.91" (150mm)
Cutting Interval	2.46" (62.5mm)
Field Cuttable	No
Housing Material	PU
Housing Technique	N/A
Body Color	White
Finish	N/A
Feed Entry	Front
Feed Length	Standard length 3.28 ft
End Cap	Injected (Factory made only)
Mounting	Clips or channel (rigid)
Storage Temperature	-25~60°C (-13~140°F)
Ambient Temperature	-40~45°C (-40~113°F)
Max. Production Length	16.4ft (5m)

Performance & Electrical

Voltage	24VDC (23.5Vmin, 24.5Vmax)
Beam Angle	30°, 45°, 60°, 20*45°
MacAdam	3 steps
Efficacy (lm/W)	72.5lm/W @4000K, 30°
CRI	Ra90
Lumen Maintenance	> 54,000 hours
IP Rating	IP67
Resistance	UV, solvent, saltwater, flame
Dimming	PWM, 0-10V, DMX
Control Protocol	N/A
Warranty	5 years

Certification & Safety

Certifications	UL, CE, REACH, RoHS, CB
Environment	Dry, damp or wet locations

Lumen/ft	5.49W	30°	45°	60°	20*45°
■ 2700K		332	334	339	319
■ 3000K		359	379	353	343
■ 3500K		368	328	400	364
■ 4000K		398	403	409	340
Max. Run Length (ft)		16.4	16.4	16.4	16.4

GRAZE TV PRO

Outdoor · Vertical Bending · Flexible



Order Code

Series	Temp./Color	Beam Angle	Power	Feed Entry	Connector Wire	End Cap	Length(ft)
GTV	27=2700K	30=30°	549=5.49W	FF=Front + Front FC=Front + Closed	OW=Open wire 3.28' MFC=Male & female connector 0.98'	IJ=Injected end cap (IP67) * End caps are added by default	Min. - 2.46" Max. run - 16.4' Cut Inc. - 2.46"
	30=3000K	45=45°					
	35=3500K	60=60°					
	40=4000K	2045=20*45°					

Example: GTV-27-30-549-FF-OW-IJ-11'

* Customizable—Contact Beamever representatives

Feed Entry Options

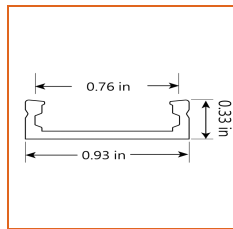
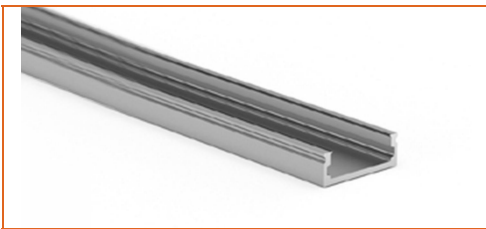
Front feed entry (F)



Closed feed entry (C)

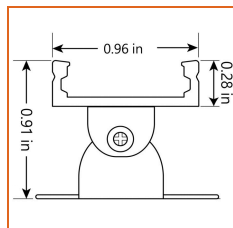


Mounting Options



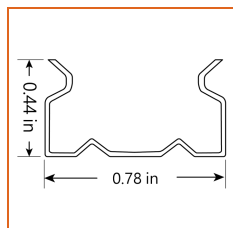
* Standard length is 3.13'/pcs.

Name	Straight Aluminum channel
Code	GTV-SC
Material	Aluminum
Mounting style	Surface mounted
Length	3.13' (955m)
Width	0.93" (23.6mm)
Height	0.33" (8.4mm)
Internal width	0.76" (19.4mm)



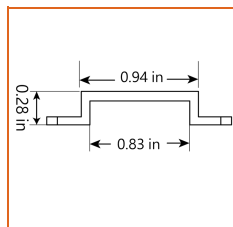
* Used with aluminum channel.

Name	Angled mounting clip
Code	GTV-AC
Material	Aluminum
Mounting style	Surface mounted
Length	0.28" (7.11mm)
Width	0.96" (24.4mm)
Height	0.91" (23mm)
Internal Width	/



* Recommend use 3 mounting clips for 3.28' of product.

Name	Mounting clip
Code	GTV-CL
Material	Stainless steel
Mounting style	Surface mounted
Length	0.79" (20mm)
Width	0.78" (19.8mm)
Height	0.44" (11.1mm)
Internal Width	/



* Recommend use 3 mounting clips for 3.28' of product.

Name	Silicone mounting clip
Code	GTV-SCL
Material	Silicone
Mounting style	Surface mounted
Length	1.39" (35.3mm)
Width	0.94" (23.8mm)
Height	0.28" (7mm)
Internal Width	0.83" (21mm)

Driver Options

Code	Max Load	Input	Output	Dimmable	Class 2	Environment	Size (L*W*H)
Non Dimmable							
KV-24030-ASW	30W	100-277VAC	24V	No	Yes	Dry/damp	6.10*2.12*0.78 inch
KV-24060-ASW	60W	100-277VAC	24V	No	Yes	Dry/damp	7.00*2.40*0.94 inch
KV-24096-ASW	96W	100-277VAC	24V	No	Yes	Dry/damp/wet	9.05*2.75*1.69 inch
KV-24150-ASW	150W	100-277VAC	24V	No	No	Dry/damp/wet	10.07*3.07*1.85 inch
KV-24200-ASW	200W	100-277VAC	24V	No	No	Dry/damp/wet	10.07*3.07*1.85 inch
KV-24300-ASW	300W	100-277VAC	24V	No	No	Dry/damp/wet	10.86*3.07*1.85 inch
Phase cut / Triac Dimmable							
KVF-24030-TDW	30W	100-277VAC	24V	Yes	Yes	Dry/damp	6.10*2.12*0.78 inch
KVF-24060-TDW	60W	100-277VAC	24V	Yes	Yes	Dry/damp	7*2.4*0.94 inch
KVF-24096-TDW	96W	100-277VAC	24V	Yes	Yes	Dry/damp/wet	9.05*2.75*1.69 inch
KVF-24150-TDW	150W	100-277VAC	24V	Yes	No	Dry/damp/wet	10*3.07*1.85 inch
KVF-24200-TDW	200W	100-277VAC	24V	Yes	No	Dry/damp/wet	10*3.07*1.85 inch
KVF-24300-TDW	300W	100-277VAC	24V	Yes	No	Dry/damp/wet	10.87*3.07*1.85 inch
4 in 1 Dimmable (0-10V/1-10V/Potentiometer/10V PWM)							
KVD-24030-DIM	30W	100-277VAC	24V	Yes	Yes	Dry/damp	6.10*2.12*0.78 inch
KVD-24060-DIM	60W	100-277VAC	24V	Yes	Yes	Dry/damp	7.01*2.40*0.94 inch
KVD-24096-DIM	96W	100-277VAC	24V	Yes	Yes	Dry/damp/wet	9.05*2.75*1.69 inch
KVD-24150-DIM	150W	100-277VAC	24V	Yes	No	Dry/damp/wet	10.08*3.07*1.85 inch
KVD-24200-DIM	200W	100-277VAC	24V	Yes	No	Dry/damp/wet	13.38*11.02*7.28 inch
KVD-24300-DIM	300W	100-277VAC	24V	Yes	No	Dry/damp/wet	10.87*3.07*1.89 inch
5 in 1 Dimmable (Triac/0-10V/1-10V/Potentiometer/10V PWM)							
KVG-24030-DW	30W	100-277VAC	24V	Yes	Yes	Dry/damp	6.1*2.13*0.79 inch
KVG-24060-DW	60W	100-277VAC	24V	Yes	Yes	Dry/damp	7.01*2.41*0.94 inch
KVG-24096-DW	96W	100-277VAC	24V	Yes	Yes	Dry/damp/wet	9.06*2.76*1.69 inch
KVG-24150-DW	150W	100-277VAC	24V	Yes	No	Dry/damp/wet	10.08*3.07*1.85 inch
KVG-24200-DW	200W	100-277VAC	24V	Yes	No	Dry/damp/wet	10.08*3.07*1.85 inch
KVG-24300-DW	300W	100-277VAC	24V	Yes	No	Dry/damp/wet	10.87*3.07*1.89 inch

* Please refer to the spec sheet of each power supply for more detailed information

* KVF, KVD, KVG series are available in junction box enclosure, you can select it by adding "J" at the end of the driver code, e.g. KVF-24030-TDWJ, and refer to its standalone spec sheet on our website.

GRAZE TV PRO

Outdoor · Vertical Bending · Flexible



Accessories Options (Optional, purchase for extra)



Name Male and female connectors

Code MFC-PU-2P-67

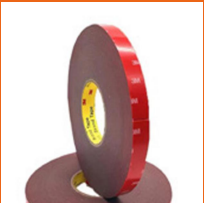
Male and female connectors with 11.81" PU cable, IP67, 2 pin



Name T-shaped M&F connectors

Code MFCT-PU-2P-67

T-shaped male and female connectors with 11.81" PU cable, IP67, 2 pin



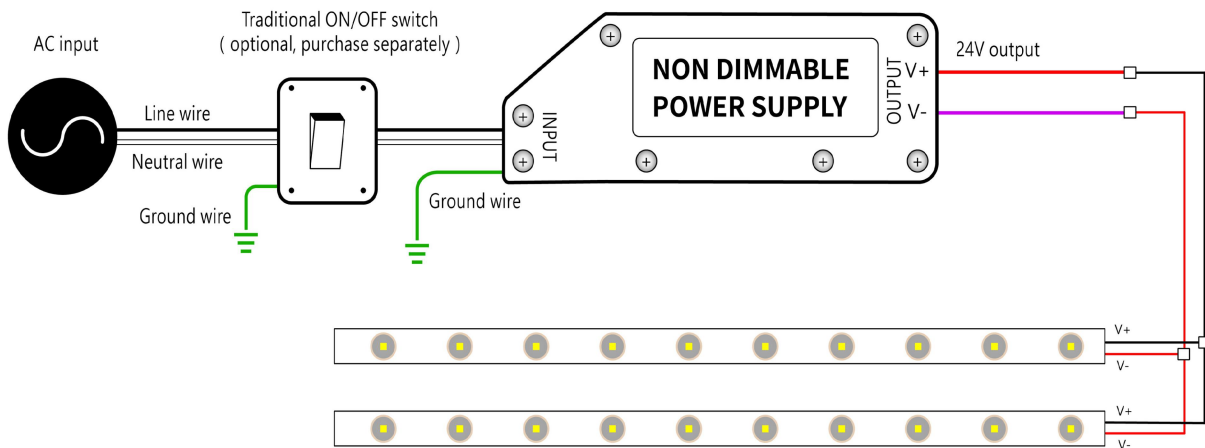
Name VHB 3M adhesive tape

Code VHB

VHB 3M adhesive back tape, stronger stickiness.

Wiring Diagram

Non Dimmable



Dimmable

