

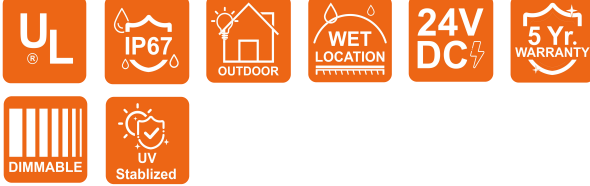
LINIO NEON 1617 TV PIXEL RGBW

Outdoor · Pixel RGBW · Vertical Bending

Beamever

Features

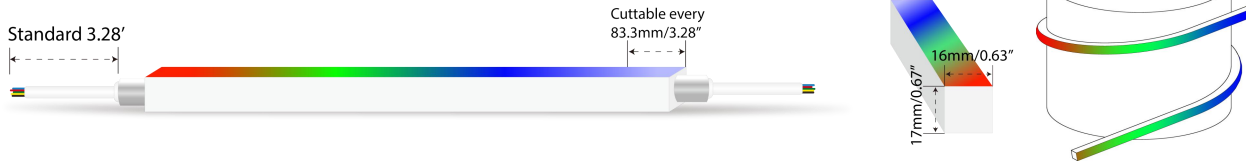
- Factory assembly
- Low voltage 24V DC
- Color chasing effects
- IP67 rated, ideal for indoor and outdoor uses
- UV stable without yellowing or cracking over time
- 5 years warranty



| | |
|---------------|--|
| Fixture type | |
| Project name | |
| Project phase | |
| Date | |



Dimension & Bending



Physical

| | |
|------------------------|---------------------------------------|
| Dimensions | 0.63" x 0.67" (width x height) |
| Bend Direction | Vertical bending |
| Bend Diameter | 11.81" (300mm) |
| Cutting Interval | 3.28" (83.3mm) |
| Field Cuttable | Yes |
| Housing Material | Dow Corning |
| Housing Technique | Co-extrusion |
| Body Color | White |
| Finish | Matte |
| Feed Entry | Front, side, bottom |
| Feed Length | Standard length 3.28' |
| End Cap | Injected/silicone/mechanical |
| Mounting | Clips or channels (rigid or bendable) |
| Storage Temperature | -25~60°C (-13~140°F) |
| Ambient Temperature | -25~45°C (-13~113°F) |
| Max. Production Length | 98.4ft (30m) |

Performance & Electrical

| | |
|-------------------|-------------------------------|
| Voltage | 24VDC (23.5Vmin, 24.5Vmax) |
| Beam Angle | 110° |
| Efficacy (lm/W) | 28.3lm/W @RGB+W3000K |
| Pixel/ft | 3 |
| Lumen Maintenance | > 30,000 hours |
| IP Rating | IP67 |
| Resistance | UV, solvent, saltwater, flame |
| Dimming | SPI |
| IC Type | SM16704PB |
| Warranty | 5 years |

Certification & Safety

| | |
|----------------|----------------------------|
| Certifications | UL |
| Environment | Dry, damp or wet locations |

| Lumen/ft | 6.71W |
|----------------------|-------|
| ■ R | 35 |
| ■ G | 68 |
| ■ B | 16 |
| ■ W27 | 83 |
| ■ W30 | 87 |
| ■ W40 | 91 |
| ■ RGBW30 | 190 |
| Max. Run Length (ft) | 32.8 |

LINIO NEON 1617 TV PIXEL RGBW

Outdoor · Pixel RGBW · Vertical Bending



Order Code

| Series | Temp./Color | Power | Feed Entry | Connector Wire | End Cap | Length (ft) |
|----------|--------------------|-----------|--|--|--|--|
| LN1617TV | PRGBW30 (3000K) | 671=6.71W | FF=Front + Front BB=Bottom + Bottom SS=Side + Side FC=Front + Closed FB=Front + Bottom BF=Bottom+Front FLS=Front + Left Side FRS=Front + Right Side BC=Bottom + Closed BLS=Bottom + Left Side BRS=Bottom + Right Side LSC=Left Side + Closed RSC=Right Side + Closed | OW=Open wire 3.28' MFCW=Male & female connector with 0.98' white cable MFCB=Male & female connector with 0.98' black cable | IJ=Injected end cap (IP67) * Factory made only SEC=Silicone end cap (IP67) MEC=Mechanical end cap (IP67) * End caps are added by default | Min. - 3.28" Max. run - 32.8' Cut Inc. - 3.28" |

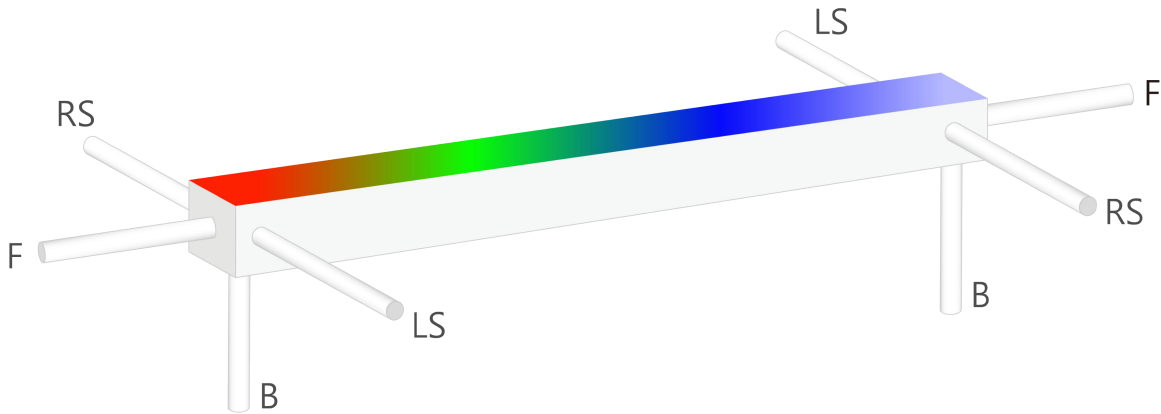
Example: LN1617TV-PRGBW30-671-FF-OW-IJ-3.28'

* Customizable—Contact Beamever representatives

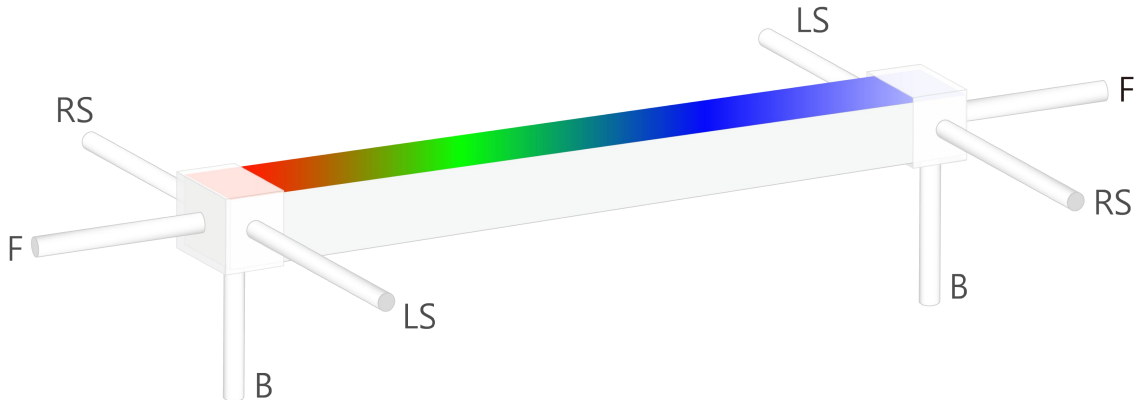
* Do not install in an environment that is permanently flooded with water or high in humidity, as damage to the neon will occur.

Feed Entry Options

For injected end cap (IP67), factory made only



For silicone end cap / mechanical end cap (IP67)

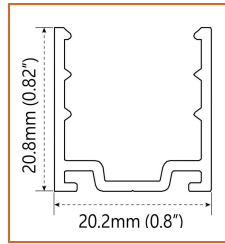


LINIO NEON 1617 TV PIXEL RGBW

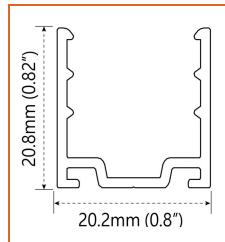
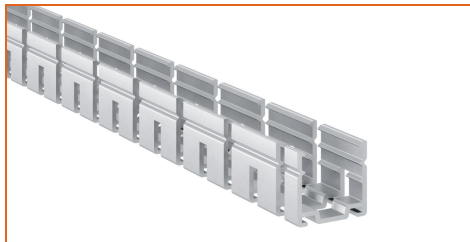
Outdoor · Pixel RGBW · Vertical Bending



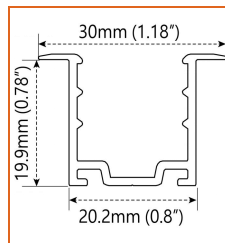
Mounting Options



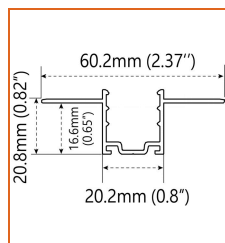
* Standard length is 3.28'/pcs.



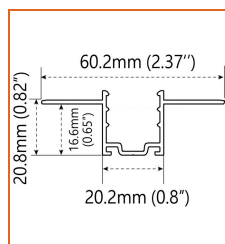
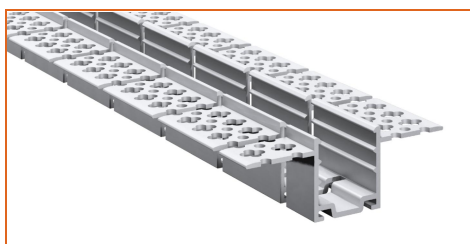
* Standard length is 3.28'/pcs.



* Standard length is 3.28'/pcs.



* Standard length is 3.28'/pcs.



* Standard length is 3.28'/pcs.

| | |
|----------------|--------------------------|
| Name | Straight surface channel |
| Code | LN1617-SC |
| Material | Aluminum |
| Mounting style | Surface mounted |
| Length | 3.28' (1m) |
| Width | 0.8" (20.2mm) |
| Height | 0.82" (20.8mm) |
| Internal width | / |

| | |
|----------------|--------------------------|
| Name | Bendable surface channel |
| Code | LN1617-BC |
| Material | Aluminum |
| Mounting style | Surface mounted |
| Length | 3.28' (1m) |
| Width | 0.8" (20.2mm) |
| Height | 0.82" (20.8mm) |
| Internal Width | / |

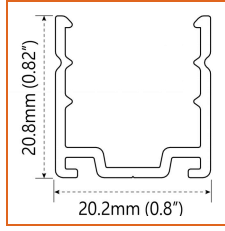
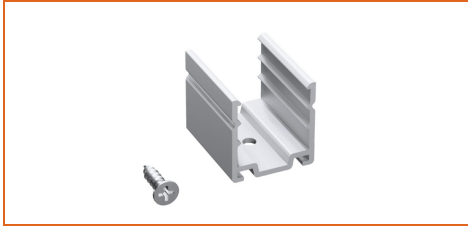
| | |
|----------------|---------------------------|
| Name | Straight recessed channel |
| Code | LN1617-RSC |
| Material | Aluminum |
| Mounting style | Recessed mounted |
| Length | 3.28' (1m) |
| Width | 1.18" (30mm) |
| Height | 0.78" (19.9mm) |
| Internal width | / |

| | |
|----------------|----------------|
| Name | Mud-in channel |
| Code | LN1617-MC |
| Material | Aluminum |
| Mounting style | Mud-in mounted |
| Length | 3.28' (1m) |
| Width | 2.37" (60.2mm) |
| Height | 0.65" (16.6mm) |
| Internal Width | / |

| | |
|----------------|-------------------------|
| Name | Bendable mud-in channel |
| Code | LN1617-BMC |
| Material | Aluminum |
| Mounting style | Mud-in mounted |
| Length | 3.28' (1m) |
| Width | 2.37" (60.2mm) |
| Height | 0.65" (16.6mm) |
| Internal Width | / |

LINIO NEON 1617 TV PIXEL RGBW

Outdoor · Pixel RGBW · Vertical Bending



* Recommend use 1 mounting clip for 1' of neon.

| | |
|----------------|-----------------|
| Name | Mounting clip |
| Code | LN1617-CL |
| Material | Aluminum |
| Mounting style | Surface mounted |
| Length | 0.98" (25mm) |
| Width | 0.8" (20.2mm) |
| Height | 0.82" (20.8mm) |
| Internal Width | / |

Driver Options

* Please refer to the spec sheet of each power supply for more detailed information

| Code | Max Load | Input | Output | Dimmable | Class 2 | Environment | Size (L*W*H) |
|---------------------|----------|------------|--------|----------|---------|--------------|----------------------|
| Non Dimmable | | | | | | | |
| KV-24030-ASW | 30W | 100-277VAC | 24V | No | Yes | Dry/damp | 6.10*2.12*0.78 inch |
| KV-24060-ASW | 60W | 100-277VAC | 24V | No | Yes | Dry/damp | 7.00*2.40*0.94 inch |
| KV-24096-ASW | 96W | 100-277VAC | 24V | No | Yes | Dry/damp/wet | 9.05*2.75*1.69 inch |
| KV-24150-ASW | 150W | 100-277VAC | 24V | No | No | Dry/damp/wet | 10.07*3.07*1.85 inch |
| KV-24200-ASW | 200W | 100-277VAC | 24V | No | No | Dry/damp/wet | 10.07*3.07*1.85 inch |
| KV-24300-ASW | 300W | 100-277VAC | 24V | No | No | Dry/damp/wet | 10.86*3.07*1.85 inch |

Controller Options

| Code | Description |
|---------|--|
| SPI-16S | Rich dynamic effects, Max. 10A current output, match with RF remote control M16S, CE, RoHS certified |

* Please refer to the spec sheet of each controller for more detailed information

Accessories Options (Optional, purchase for extra)



Name Silicone closed end cap
Code LN1617-SEC-C
Closed silicone end cap



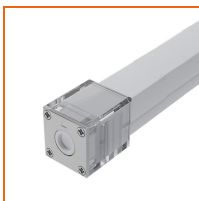
Name Silicone front end cap
Code LN1617-SEC-F-3P
Silicone end cap front entry with 11.81" black cable, 3 pin



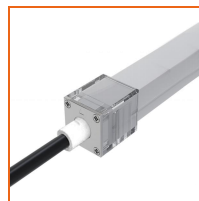
Name Silicone side end cap
Code LN1617-SEC-S-3P
Silicone end cap side entry with 11.81" black cable, 3 pin



Name Silicone bottom end cap
Code LN1617-SEC-B-3P
Silicone end cap bottom entry with 11.81" black cable, 3 pin



Name Mechanical end cap
Code LN1617-MEC-C
Mechanical closed end cap with screws

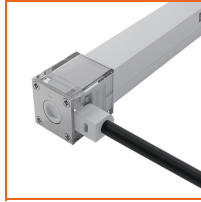


Name Mechanical end cap
Code LN1617-MEC-F-3P
Mechanical end cap with screws, front entry with 11.81" black cable, 3 pin

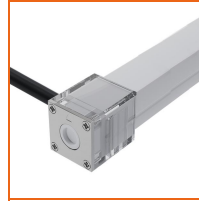
LINIO NEON 1617 TV PIXEL RGBW

Outdoor · Pixel RGBW · Vertical Bending

Beamever



Name Mechanical end cap
Code LN1617-MEC-LS-3P
Mechanical end cap with screws, left side entry with 11.81" black cable, 3 pin



Name Mechanical end cap
Code LN1617-MEC-RS-3P
Mechanical end cap with screws, right side entry with 11.81" black cable, 3 pin



Name Mechanical end cap
Code LN1617-MEC-B-3P
Mechanical end cap with screws, bottom entry with 11.81" black cable, 3 pin



Name Jumper connector
Code LN1617-JC-3P-67
Jumper connector with 2.76"(7cm) white cable, 3 pin, IP67



Name Male and female connectors
Code MFC-3P-67-W
Male and female connectors with 11.81" white cable, 3 pin



Name Male and female connectors
Code MFC-3P-67-B
Male and female connectors with 11.81" black cable, 3 pin



Name Extension connectors
Code ETC-3P-67-1M
Extension Male and female connectors with 1m (3.28ft) white cable, 3 pin



Name Extension connectors
Code ETC-3P-67-5M
Extension Male and female connectors with 5m (16.4ft) white cable, 3 pin



Name IP67 Signal connectors
Code SC-3P-67
Male connector and female signal connector with 7.87" cable, 3 pin



Name IP67 T connector
Code TC-3P-67
Male connector and female T-shaped connector with 7.87" cable, 3 pin



Name Silicone glue
Code SG
Silicone glue

LINIO NEON 1617 TV PIXEL RGBW

Outdoor · Pixel RGBW · Vertical Bending



Wiring Diagram

Dimmable

