

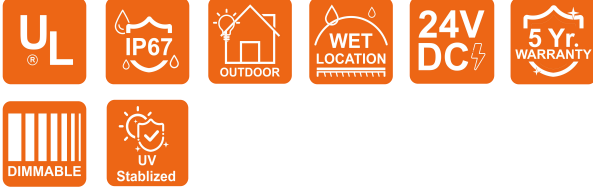
# LINIO NEON 1617 SV RGBW

Outdoor · Horizontal Bending

# Beamever

## Features

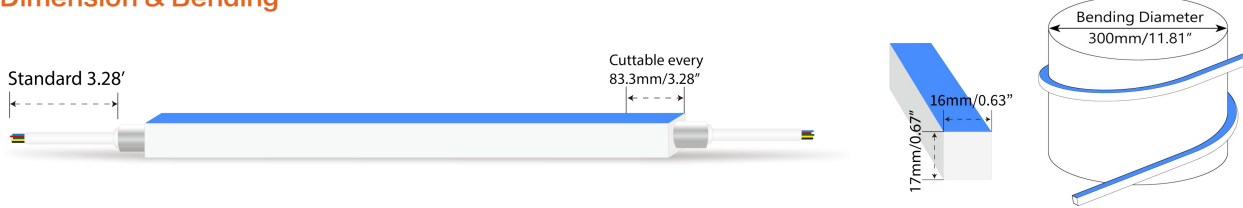
- Factory assembly
- Low voltage 24V DC
- RGBW allows for versatile lighting effects
- Max run length up to 29.5ft from single power feed
- IP67 rated, ideal for indoor and outdoor uses
- UV stable without yellowing or cracking over time



Fixture type	
Project name	
Project phase	
Date	



## Dimension & Bending



## Physical

Dimensions	0.63" x 0.67" (width x height)
Bend Direction	Horizontal bending
Bend Diameter	11.81" (300mm)
Cutting Interval	3.28" (83.3mm)
Field Cuttable	Yes
Housing Material	Dow Corning
Housing Technique	Co-extrusion
Body Color	White
Finish	Matte
Feed Entry	Front, side, bottom
Feed Length	Standard length 3.28'
End Cap	Injected/silicone/mechanical
Mounting	Clips or channels (rigid or bendable)
Storage Temperature	-25~60°C (-13~140°F)
Ambient Temperature	-25~45°C (-13~113°F)
Max. Production Length	98.4ft (30m)

## Performance & Electrical

Voltage	24VDC (23.5Vmin, 24.5Vmax)
Beam Angle	110°
Efficacy (lm/W)	32.2lm/W @RGB+W3000K
Lumen Maintenance	> 30,000 hours
IP Rating	IP67
Resistance	UV, solvent, saltwater, flame
Dimming	DMX
Warranty	5 years

## Certification & Safety

Certifications	UL
Environment	Dry, damp or wet locations

Lumen/ft	5.18W
■ R	26
■ G	65
■ B	15
■ W27	59
■ W30	63
■ W40	66
■ RGBW30	167
Max. Run Length (ft)	29.5

# LINIO NEON 1617 SV RGBW

Outdoor · Horizontal Bending



## Order Code

Series	Temp./Color	Power	Feed Entry	Connector Wire	End Cap	Length (ft)
LN1617SV	RGBW30 (3000K)	518=5.18W	FF=Front + Front BB=Bottom + Bottom SS=Side + Side FC=Front + Closed FB=Front + Bottom BF=Bottom+Front FLS=Front + Left Side FRS=Front + Right Side BC=Bottom + Closed BLS=Bottom + Left Side BRS=Bottom + Right Side LSC=Left Side + Closed RSC=Right Side + Closed	OW=Open wire 3.28' MFCW=Male & female connector with 0.98' white cable MFCB=Male & female connector with 0.98' balck cable	IJ=Injected end cap (IP67) * Factory made only SEC=Silicone end cap (IP67) MEC=Mechanical end cap (IP67) * End caps are added by default	Min. - 3.28" Max. run - 29.5' Cut Inc. - 3.28"

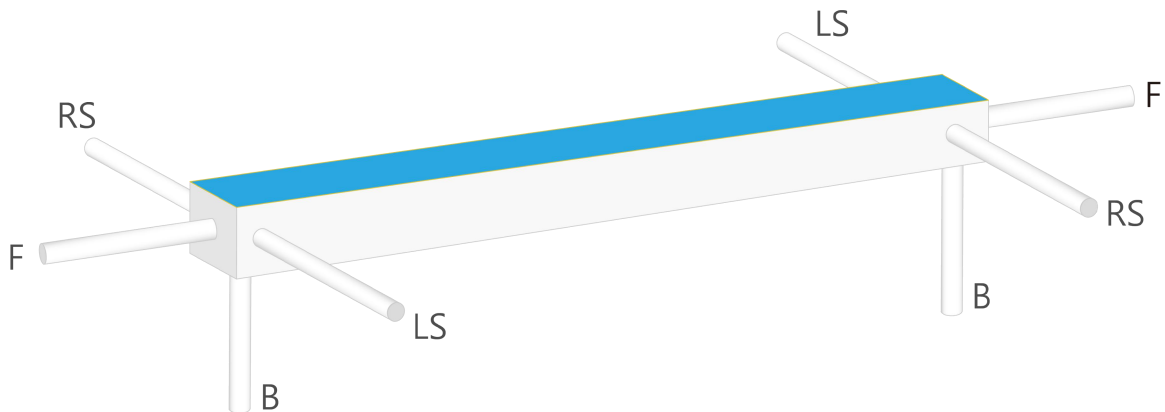
Example: LN1617SV-RGBW30-518-FF-OW-IJ-3.28'

\* Customizable—Contact Beamever representatives

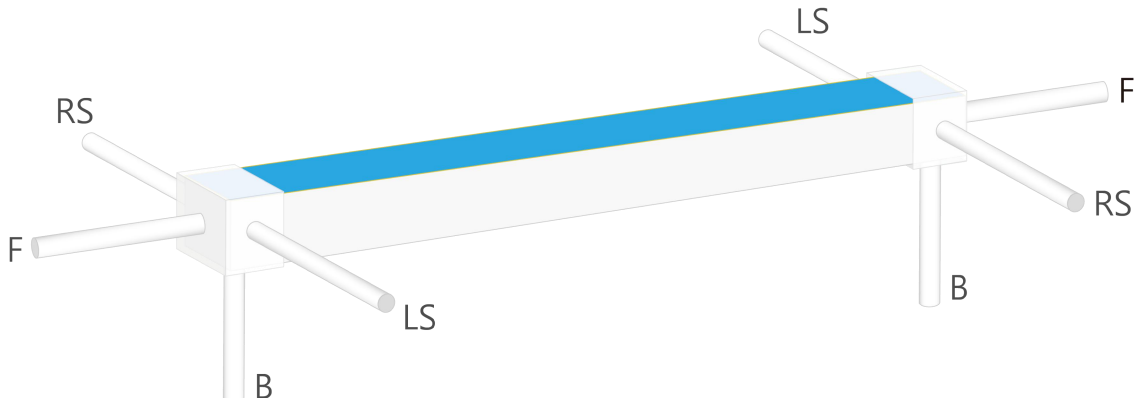
\* Do not install in an environment that is permanently flooded with water or high in humidity, as damage to the neon will occur.

## Feed Entry Options

For injected end cap (IP67), factory made only



For silicone end cap / mechanical end cap (IP67)

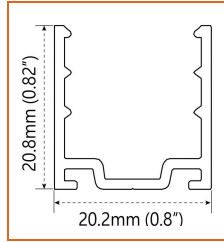


# LINIO NEON 1617 SV RGBW

Outdoor · Horizontal Bending

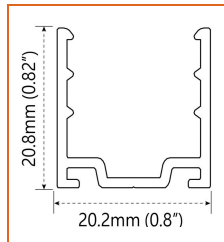
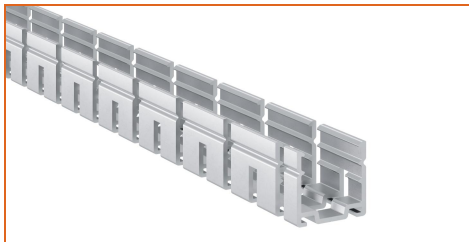


## Mounting Options



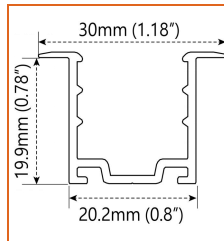
\* Standard length is 3.28'/pcs.

Name	Straight surface channel
Code	LN1617-SC
Material	Aluminum
Mounting style	Surface mounted
Length	3.28' (1m)
Width	0.8" (20.2mm)
Height	0.82" (20.8mm)
Internal width	/



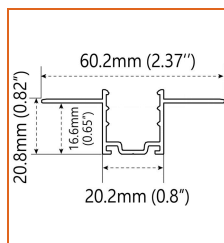
\* Standard length is 3.28'/pcs.

Name	Bendable surface channel
Code	LN1617-BC
Material	Aluminum
Mounting style	Surface mounted
Length	3.28' (1m)
Width	0.8" (20.2mm)
Height	0.82" (20.8mm)
Internal Width	/



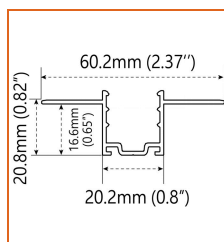
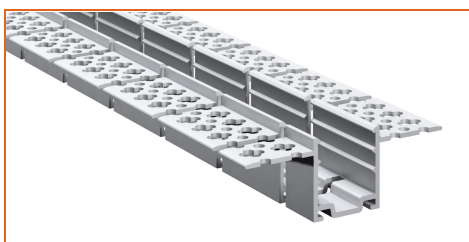
\* Standard length is 3.28'/pcs.

Name	Straight recessed channel
Code	LN1617-RSC
Material	Aluminum
Mounting style	Recessed mounted
Length	3.28' (1m)
Width	1.18" (30mm)
Height	0.78" (19.9mm)
Internal width	/



\* Standard length is 3.28'/pcs.

Name	Mud-in channel
Code	LN1617-MC
Material	Aluminum
Mounting style	Mud-in mounted
Length	3.28' (1m)
Width	2.37" (60.2mm)
Height	0.65" (16.6mm)
Internal Width	/

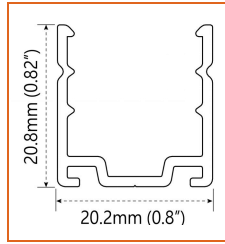
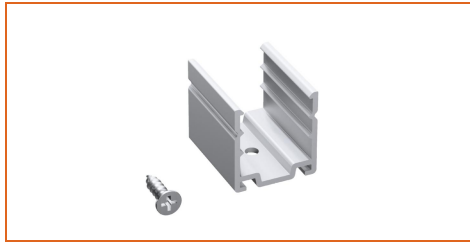


\* Standard length is 3.28'/pcs.

Name	Bendable mud-in channel
Code	LN1617-BMC
Material	Aluminum
Mounting style	Mud-in mounted
Length	3.28' (1m)
Width	2.37" (60.2mm)
Height	0.65" (16.6mm)
Internal Width	/

# LINIO NEON 1617 SV RGBW

Outdoor · Horizontal Bending



\* Recommend use 1 mounting clip for 1' of neon.

Name	Mounting clip
Code	LN1617-CL
Material	Aluminum
Mounting style	Surface mounted
Length	0.98" (25mm)
Width	0.8" (20.2mm)
Height	0.82" (20.8mm)
Internal Width	/

## Driver Options

Code	Max Load	Input	Output	Dimmable	Class 2	Environment	Size (L*W*H)
<b>Non Dimmable</b>							
KV-24030-ASW	30W	100-277VAC	24V	No	Yes	Dry/damp	6.10*2.12*0.78 inch
KV-24060-ASW	60W	100-277VAC	24V	No	Yes	Dry/damp	7.00*2.40*0.94 inch
KV-24096-ASW	96W	100-277VAC	24V	No	Yes	Dry/damp/wet	9.05*2.75*1.69 inch
KV-24150-ASW	150W	100-277VAC	24V	No	No	Dry/damp/wet	10.07*3.07*1.85 inch
KV-24200-ASW	200W	100-277VAC	24V	No	No	Dry/damp/wet	10.07*3.07*1.85 inch
KV-24300-ASW	300W	100-277VAC	24V	No	No	Dry/damp/wet	10.86*3.07*1.85 inch
<b>DMX512 Dimmable</b>							
KVX-24096-4C-A	96W	100-277VAC	24V	Yes	Yes	Dry/damp/wet	9.05*3.07*0.98 inch
KVX-24150-4C-A	150W	100-277VAC	24V	Yes	No	Dry/damp/wet	10.9*3.07*0.98 inch
KVX-24200-4C-A	200W	100-277VAC	24V	Yes	No	Dry/damp/wet	10.9*3.07*0.98 inch
KVX-24300-4C-A	300W	100-277VAC	24V	Yes	No	Dry/damp/wet	11.85*3.07*0.98 inch

\* Please refer to the spec sheet of each power supply for more detailed information

## DMX Decoder Options

Code	Description
LT-904	4 channels output, up to 576W output power
LT-916	16 channels output, up to 1152W output power
LT-932	32 channels output, up to 2304W output power

\* Please refer to the spec sheet of each decoder for more detailed information

## Controller Options

Code	Description
DINA-DR micro	DMX 60 channels, DMX Stand Alone controller with 10 scenes, USB connectivity for programming
SLESA-U9	DMX 256 channels, USB connection, stand alone mode with 1 area and 20 scenes
STICK-GA2	DMX 512 channels, ready to use (pre-loaded with 8 scenes and 170 RGB fixtures)
STICK-CW4	DMX 1024 channels, up to 36 scenes stored and directly recalled via 6 touch sensitive buttons

\* Please refer to the spec sheet of each controller for more detailed information

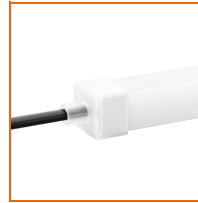
## Accessories Options (Optional, purchase for extra)



Name Silicone closed end cap

Code LN1617-SEC-C

Closed silicone end cap



Name Silicone front end cap

Code LN1617-SEC-F-5P

Silicone end cap front entry with 11.81" black cable, 5 pin



Name Silicone side end cap

Code LN1617-SEC-S-5P

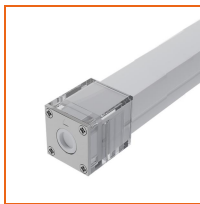
Silicone end cap side entry with 11.81" black cable, 5 pin



Name Silicone bottom end cap

Code LN1617-SEC-B-5P

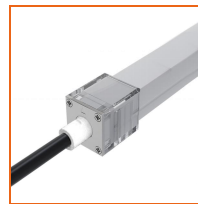
Silicone end cap bottom entry with 11.81" black cable, 5 pin



Name Mechanical end cap

Code LN1617-MEC-C

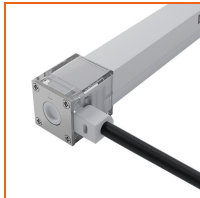
Mechanical closed end cap with screws



Name Mechanical end cap

Code LN1617-MEC-F-5P

Mechanical end cap with screws, front entry with 11.81" black cable, 5 pin



Name Mechanical end cap

Code LN1617-MEC-LS-5P

Mechanical end cap with screws, left side entry with 11.81" black cable, 5 pin



Name Mechanical end cap

Code LN1617-MEC-RS-5P

Mechanical end cap with screws, right side entry with 11.81" black cable, 5 pin



Name Mechanical end cap

Code LN1617-MEC-B-5P

Mechanical end cap with screws, bottom entry with 11.81" black cable, 5 pin



Name Jumper connector

Code LN1617-JC-5P-67

Jumper connector with 2.76"(7cm) white cable, 5 pin, IP67



Name Male and female connectors

Code MFC-5P-67-W

Male and female connectors with 11.81" white cable, 5 pin



Name Male and female connectors

Code MFC-5P-67-B

Male and female connectors with 11.81" black cable, 5 pin



Name Extension connectors

Code ETC-5P-67-1M

Extension Male and female connectors with 1m (3.28ft) white cable, 5 pin



Name Extension connectors

Code ETC-5P-67-5M

Extension Male and female connectors with 5m (16.4ft) white cable, 5 pin

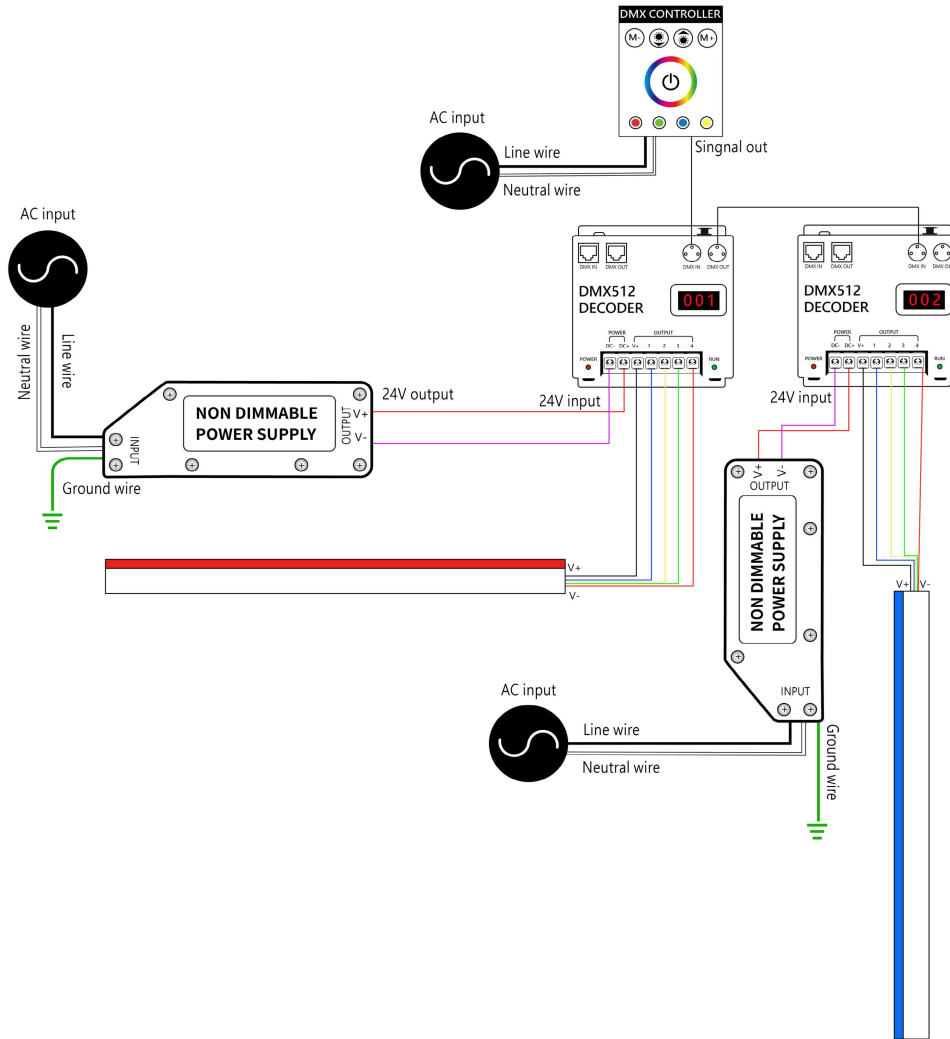
# LINIO NEON 1617 SV RGBW

Outdoor · Horizontal Bending



## Wiring Diagram

Nicolaudie + DMX Control System



Nicolaudie + DMX Driver System

