

# LINIO NEON 1617 TV TW

Outdoor · Tunable White · Vertical Bending

# Beamever

## Features

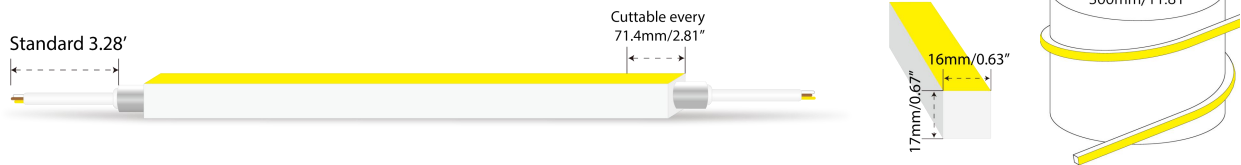
- Factory assembly
- Low voltage 24V DC
- Tunable white, CCT changing from 2700K to 5300K
- IP67 rated, ideal for indoor and outdoor uses
- UV stable without yellowing or cracking over time
- 5 years warranty



Fixture type	
Project name	
Project phase	
Date	



## Dimension & Bending



## Physical

Dimensions	0.63" x 0.67" (width x height)
Bend Direction	Vertical bending
Bend Diameter	11.81" (300mm)
Cutting Interval	2.81" (71.4mm)
Field Cuttable	Yes
Housing Material	Dow Corning
Housing Technique	Co-extrusion
Body Color	White
Finish	Matte
Feed Entry	Front, side, bottom
Feed Length	Standard length 3.28'
End Cap	Injected/silicone/mechanical
Mounting	Clips or channels (rigid or bendable)
Storage Temperature	-25~60°C (-13~140°F)
Ambient Temperature	-25~45°C (-13~113°F)
Max. Production Length	98.4ft (30m)

## Performance & Electrical

Voltage	24VDC (23.5Vmin, 24.5Vmax)
Beam Angle	110°
MacAdam	2 steps
Efficacy (lm/W)	73.2lm/W @2700K+5300K
CRI	>90
Lumen Maintenance	> 54,000 hours
IP Rating	IP67
Resistance	UV, solvent, saltwater, flame
Dimming	Triac, ELV, PWM, 0-10V, DMX, SPI
Warranty	5 years

## Certification & Safety

Certifications	UL
Environment	Dry, damp or wet locations

Lumen/ft	3.96W
■ 2700K	148
■ 5300K	148
■ 2700K+5300K	290
Max. Run Length (ft)	49.2

# LINIO NEON 1617 TV TW

Outdoor · Tunable White · Vertical Bending



## Order Code

Series	Temp./Color	Power	Feed Entry	Connector Wire	End Cap	Length (ft)
LN1617TV	2753=2700K+53 00K	396=3.96W	<b>FF</b> =Front + Front <b>BB</b> =Bottom + Bottom <b>SS</b> =Side + Side <b>FC</b> =Front + Closed <b>FB</b> =Front + Bottom <b>BF</b> =Bottom+Front <b>FLS</b> =Front + Left Side <b>FRS</b> =Front + Right Side <b>BC</b> =Bottom + Closed <b>BLS</b> =Bottom + Left Side <b>BRS</b> =Bottom + Right Side <b>LSC</b> =Left Side + Closed <b>RSC</b> =Right Side + Closed	<b>OW</b> =Open wire 3.28' <b>MFCW</b> =Male & female connector with 0.98' white cable <b>MFCB</b> =Male & female connector with 0.98' black cable	<b>IJ</b> =Injected end cap (IP67) * Factory made only <b>SEC</b> =Silicone end cap (IP67) <b>MEC</b> =Mechanical end cap (IP67) * End caps are added by default	Min. - 2.81" Max. run - 49.2' Cut Inc. - 2.81"

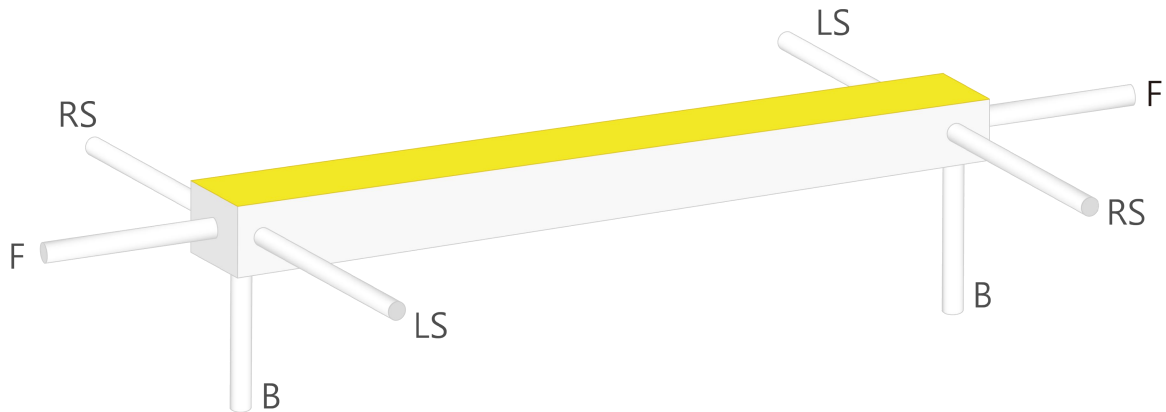
Example: LN1617TV-2753-396-FF-OW-IJ-3.28'

\* Customizable—Contact Beamever representatives

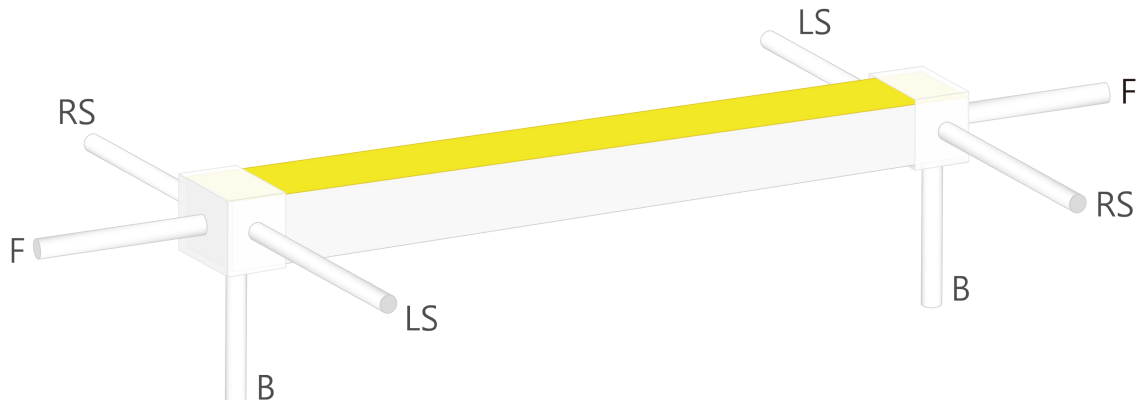
\* Do not install in an environment that is permanently flooded with water or high in humidity, as damage to the neon will occur.

## Feed Entry Options

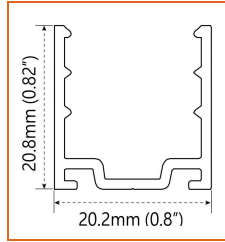
For injected end cap (IP67), factory made only



For silicone end cap / mechanical end cap (IP67)

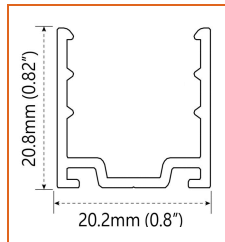
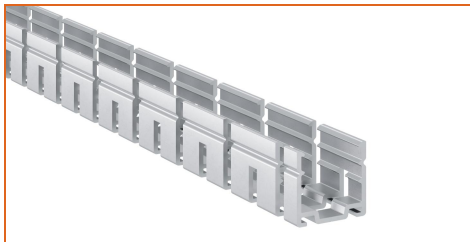


**Mounting Options**



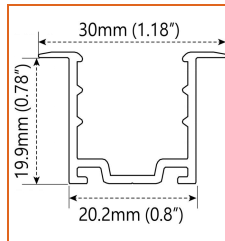
\* Standard length is 3.28'/pcs.

Name	Straight surface channel
Code	LN1617-SC
Material	Aluminum
Mounting style	Surface mounted
Length	3.28' (1m)
Width	0.8" (20.2mm)
Height	0.82" (20.8mm)
Internal width	/



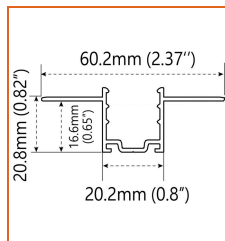
\* Standard length is 3.28'/pcs.

Name	Bendable surface channel
Code	LN1617-BC
Material	Aluminum
Mounting style	Surface mounted
Length	3.28' (1m)
Width	0.8" (20.2mm)
Height	0.82" (20.8mm)
Internal Width	/



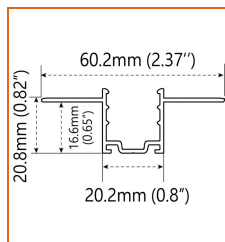
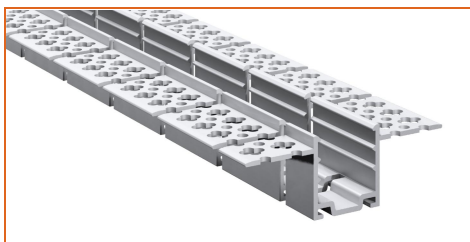
\* Standard length is 3.28'/pcs.

Name	Straight recessed channel
Code	LN1617-RSC
Material	Aluminum
Mounting style	Recessed mounted
Length	3.28' (1m)
Width	1.18" (30mm)
Height	0.78" (19.9mm)
Internal width	/



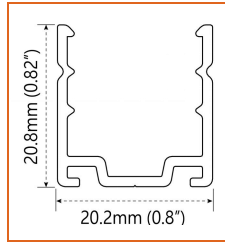
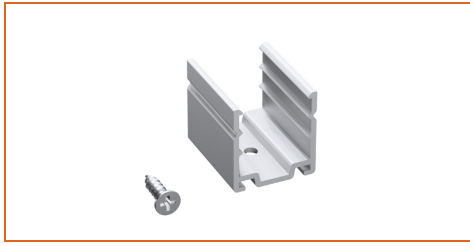
\* Standard length is 3.28'/pcs.

Name	Mud-in channel
Code	LN1617-MC
Material	Aluminum
Mounting style	Mud-in mounted
Length	3.28' (1m)
Width	2.37" (60.2mm)
Height	0.65" (16.6mm)
Internal Width	/



\* Standard length is 3.28'/pcs.

Name	Bendable mud-in channel
Code	LN1617-BMC
Material	Aluminum
Mounting style	Mud-in mounted
Length	3.28' (1m)
Width	2.37" (60.2mm)
Height	0.65" (16.6mm)
Internal Width	/



\* Recommend use 1 mounting clip for 1' of neon.

Name	Mounting clip
Code	LN1617-CL
Material	Aluminum
Mounting style	Surface mounted
Length	0.98" (25mm)
Width	0.8" (20.2mm)
Height	0.82" (20.8mm)
Internal Width	/

**Driver Options**

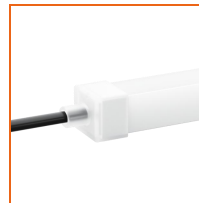
Code	Max Load	Input	Output	Dimmable	Class 2	Environment	Size (L*W*H)
LM-100-24-U2A2	100W	100-277VAC	24V	Yes	No	Dry	13.86 x 1.69 x 1.18 inch

\* Please refer to the spec sheet of each power supply for more detailed information

**Accessories Options (Optional, purchase for extra)**



Name Silicone closed end cap  
Code LN1617-SEC-C  
Closed silicone end cap



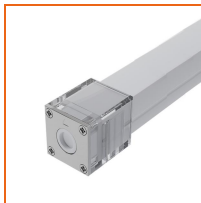
Name Silicone front end cap  
Code LN1617-SEC-F-3P  
Silicone end cap front entry with 11.81" black cable, 3 pin



Name Silicone side end cap  
Code LN1617-SEC-S-3P  
Silicone end cap side entry with 11.81" black cable, 3 pin



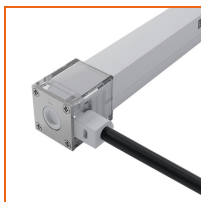
Name Silicone bottom end cap  
Code LN1617-SEC-B-3P  
Silicone end cap bottom entry with 11.81" black cable, 3 pin



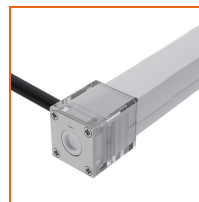
Name Mechanical end cap  
Code LN1617-MEC-C  
Mechanical closed end cap with screws



Name Mechanical end cap  
Code LN1617-MEC-F-3P  
Mechanical end cap with screws, front entry with 11.81" black cable, 3 pin



Name Mechanical end cap  
Code LN1617-MEC-LS-3P  
Mechanical end cap with screws, left side entry with 11.81" black cable, 3 pin



Name Mechanical end cap  
Code LN1617-MEC-RS-3P  
Mechanical end cap with screws, right side entry with 11.81" black cable, 3 pin



Name Mechanical end cap  
Code LN1617-MEC-B-3P  
Mechanical end cap with screws, bottom entry with 11.81" black cable, 3 pin



Name Jumper connector  
Code LN1617-JC-3P-67  
Jumper connector with 2.76"(7cm) white cable, 3 pin, IP67

# LINIO NEON 1617 TV TW

Outdoor · Tunable White · Vertical Bending



Name Male and female connectors  
 Code MFC-3P-67-W  
 Male and female connectors with 11.81" white cable, 3 pin



Name Male and female connectors  
 Code MFC-3P-67-B  
 Male and female connectors with 11.81" black cable, 3 pin



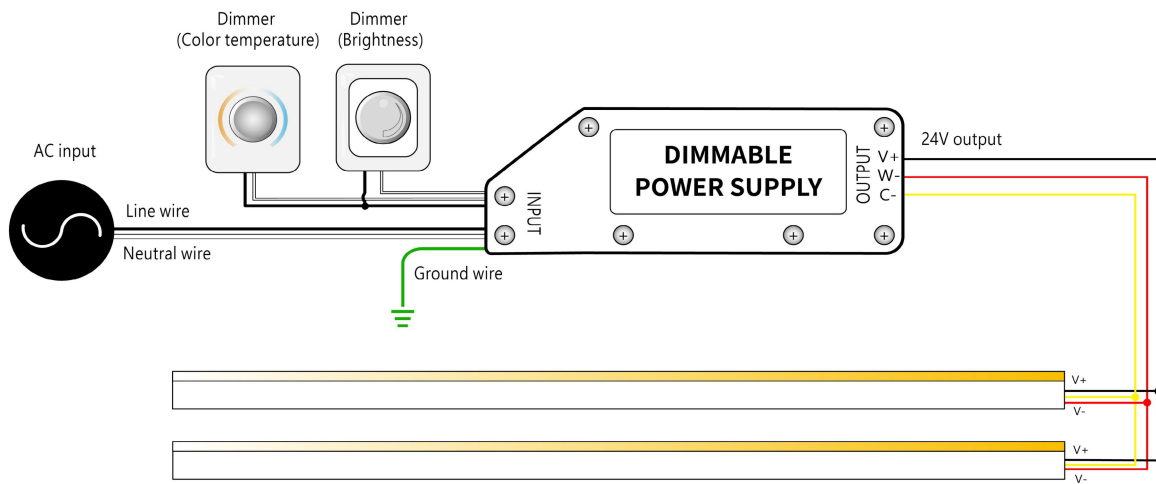
Name Extension connectors  
 Code ETC-3P-67-1M  
 Extension Male and female connectors with 1m (3.28ft) white cable, 3 pin



Name Extension connectors  
 Code ETC-3P-67-5M  
 Extension Male and female connectors with 5m (16.4ft) white cable, 3 pin

## Wiring Diagram

### Dimmable



\* Dimmers need to be purchased separately.