

LINIO NEON 0408X SV TW

Outdoor · Tunable White · Field cuttable

Beamever

Features

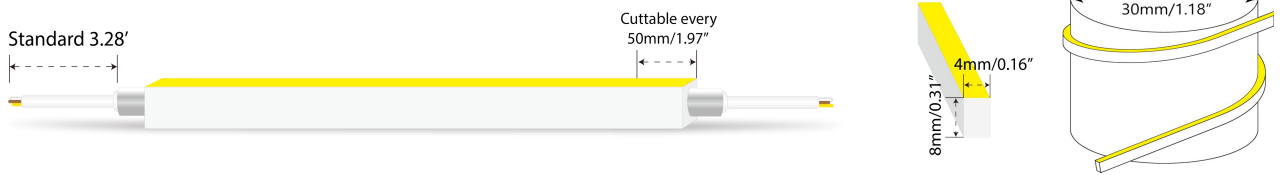
- Field cuttable & joinable
- Low voltage 24V DC
- Tunable white, CCT changing from 2700K to 6000K
- IP65 rated for silicone end cap, IP54 for injected end cap
- UV stable without yellowing or cracking over time
- 5 years warranty



Fixture type	
Project name	
Project phase	
Date	



Dimension & Bending



Physical

Dimensions	0.16" x 0.31" (width x height)
Bend Direction	Horizontal bending
Bend Diameter	1.18" (30mm)
Cutting Interval	1.97" (50mm)
Field Cuttable	Yes
Housing Material	Dow Corning
Housing Technique	Co-extrusion
Body Color	White
Finish	Matte
Feed Entry	Front, side, bottom
Feed Length	Standard length 3.28'
End Cap	Injected/silicone
Mounting	Clips or channels (rigid or bendable)
Storage Temperature	-25~60°C (-13~140°F)
Ambient Temperature	-25°C~55°C (-13°F~131°F)
Max. Production Length	65.6ft (20m)

Performance & Electrical

Voltage	24VDC (23.5Vmin, 24.5Vmax)
Beam Angle	110°
MacAdam	2 steps
Efficacy (lm/W)	26.8lm/W @2700K+6000K
CRI	Ra > 90
Lumen Maintenance	> 36,000 hours
IP Rating	IP65/ IP54
Resistance	UV, solvent, saltwater, flame
Dimming	Triac, ELV, PWM, 0-10V, DMX, SPI
Control Protocol	N/A
Warranty	5 years

Certification & Safety

Certifications	UL
Environment	Dry or damp locations

Lumen/ft	1.83W
■ 2700K	49
■ 6000K	52
■ 2700K+6000K	49
Max. Run Length (ft)	16.4

LINIO NEON 0408X SV TW

Outdoor · Tunable White · Field cuttable



Order Code

Series	Temp./Color	Power	Feed Entry	Connector Wire	End Cap	Length (ft)
LN0408XSV	2760=2700K+6000K	183=1.83W	FF=Front + Front FC=Front + Closed	OW=Open wire 3.28' MFCW=Male & female connector with 0.98' white cable MFCB=Male & female connector with 0.98' black cable	IJ=Injected end cap (IP54) * Factory made only SEC=Silicone end cap (IP65) * End caps are added by default	Min. - 1.97" Max. run - 16.4' Cut Inc. - 1.97"

Example: LN0408XSV-2760-183-FF-OW-IJ-3.28'

* Customizable—Contact Beamever representatives

*This product is not rated as submersible. Do not install in a location where water may pool or collect.

Feed Entry Options

For injected end cap (IP54), factory made only



For silicone end cap (IP65)

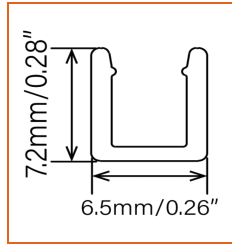
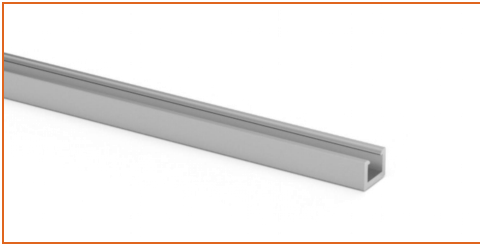


LINIO NEON 0408X SV TW

Outdoor · Tunable White · Field cuttable

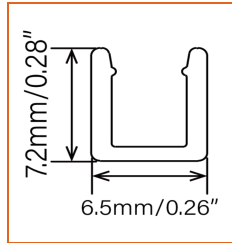
Beamever

Mounting Options



* Standard length is 3.28'/pcs.

Name	Straight surface channel
Code	LN0408-SC
Material	Aluminum
Mounting style	Surface mounted
Length	3.28' (1m)
Width	0.26" (6.5mm)
Height	0.28" (7.2mm)
Internal width	/



* Recommend use 1 mounting clip for 1' of neon.

Name	Mounting clip
Code	LN0408-CL
Material	Stainless Steel
Mounting style	Surface mounted
Length	0.59" (15mm)
Width	0.26" (6.5mm)
Height	0.28" (7.2mm)
Internal Width	/

LINIO NEON 0408X SV TW

Outdoor · Tunable White · Field cuttable

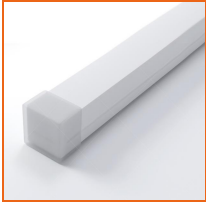


Driver Options

Code	Max Load	Input	Output	Dimmable	Class 2	Environment	Size (L*W*H)
LM-100-24-U2A2	100W	100-277VAC	24V	Yes	No	Dry	13.86 x 1.69 x 1.18 inch

* Please refer to the spec sheet of each power supply for more detailed information

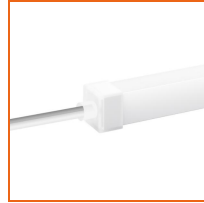
Accessories Options (Optional, purchase for extra)



Name Silicone closed end cap

Code LN0408-SEC-C

Closed silicone end cap



Name Silicone front end cap

Code LN0408-SEC-F-3P

Silicone end cap front entry with 11.81" black cable, 3 pin



Name Male and female connectors

Code MFC-3P-67-W

Male and female connectors with 11.81" white cable, 3 pin



Name Male and female connectors

Code MFC-3P-67-B

Male and female connectors with 11.81" black cable, 3 pin



Name Extension connectors

Code ETC-3P-67-1M

Extension male and female connectors with 1m (3.28ft) white cable, 3 pin



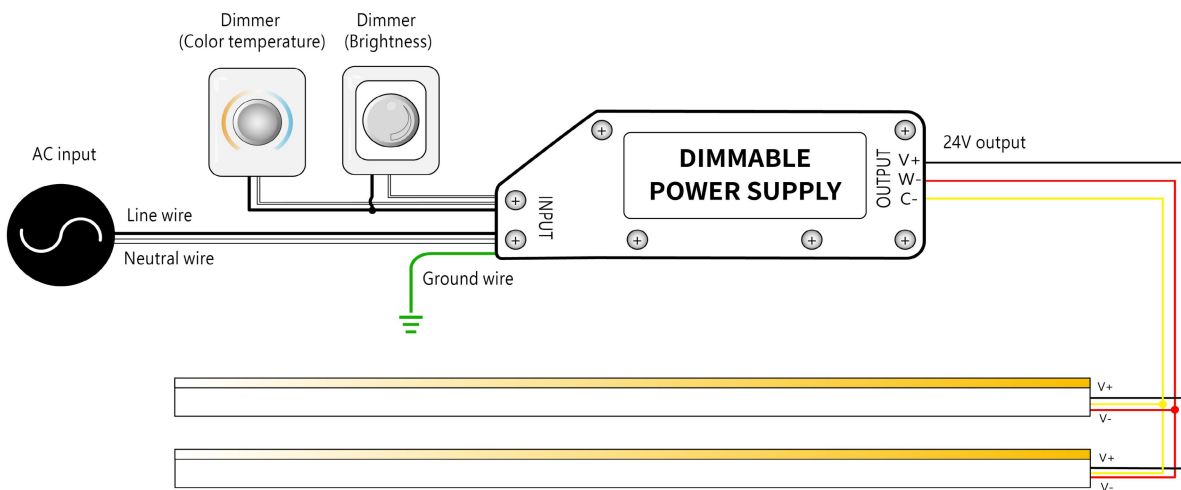
Name Extension connectors

Code ETC-3P-67-5M

Extension male and female connectors with 5m (16.4ft) white cable, 3 pin

Wiring Diagram

Dimmable



* Dimmers need to be purchased separately.