

# LINIO NEON 0612X SV TW

Outdoor · Tunable White · Field cuttable

# Beamever

## Features

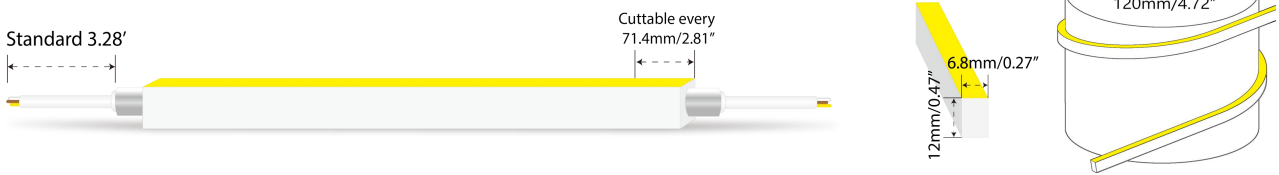
- Field cuttable & joinable
- Low voltage 24V DC
- Tunable white, CCT changing from 2700K to 5300K
- IP67 rated, ideal for indoor and outdoor uses
- UV stable without yellowing or cracking over time
- 5 years warranty



Fixture type	
Project name	
Project phase	
Date	



## Dimension & Bending



## Physical

Dimensions	0.27" x 0.47" (width x height)
Bend Direction	Horizontal bending
Bend Diameter	4.72" (120mm)
Cutting Interval	2.81" (71.4mm)
Field Cuttable	Yes
Housing Material	Dow Corning
Housing Technique	Co-extrusion
Body Color	White
Finish	Matte
Feed Entry	Front, side, bottom
Feed Length	Standard length 3.28'
End Cap	Injected/silicone
Mounting	Clips or channels (rigid or bendable)
Storage Temperature	-25~60°C (-13~140°F)
Ambient Temperature	-25~45°C (-13~113°F)
Max. Production Length	98.4ft (30m)

## Performance & Electrical

Voltage	24VDC (23.5Vmin, 24.5Vmax)
Beam Angle	110°
MacAdam	2 steps
Efficacy (lm/W)	39.6lm/W @2700K+5300K
CRI	Ra>90
Lumen Maintenance	> 54,000 hours
IP Rating	IP67
Resistance	UV, solvent, saltwater, flame
Dimming	Triac, ELV, PWM, 0-10V, DMX, SPI
Warranty	5 years

## Certification & Safety

Certifications	UL
Environment	Dry, damp or wet locations

<b>Lumen/ft</b>	<b>3.96W</b>
■ 2700K	76
■ 5300K	78
■ 2700K+5300K	157
Max. Run Length (ft)	32.8

# LINIO NEON 0612X SV TW

Outdoor · Tunable White · Field cuttable



## Order Code

Series	Temp./Color	Power	Feed Entry	Connector Wire	End Cap	Length (ft)
LN0612XSV	2753=2700K+53 00K	396=3.96W	<b>FF</b> =Front + Front <b>BB</b> =Bottom + Bottom <b>SS</b> =Side + Side <b>FC</b> =Front + Closed <b>FB</b> =Front + Bottom <b>BF</b> =Bottom+Front <b>FLS</b> =Front + Left Side <b>FRS</b> =Front + Right Side <b>BC</b> =Bottom + Closed <b>BLS</b> =Bottom + Left Side <b>BRS</b> =Bottom + Right Side <b>LSC</b> =Left Side + Closed <b>RSC</b> =Right Side + Closed	<b>OW</b> =Open wire 3.28' <b>MFCW</b> =Male & female connector with 0.98' white cable <b>MFCB</b> =Male & female connector with 0.98' black cable	<b>IJ</b> =Injected end cap (IP67) * Factory made only <b>SEC</b> =Silicone end cap (IP67) * End caps are added by default	Min. - 2.81" Max. run - 32.8' Cut Inc. - 2.81"

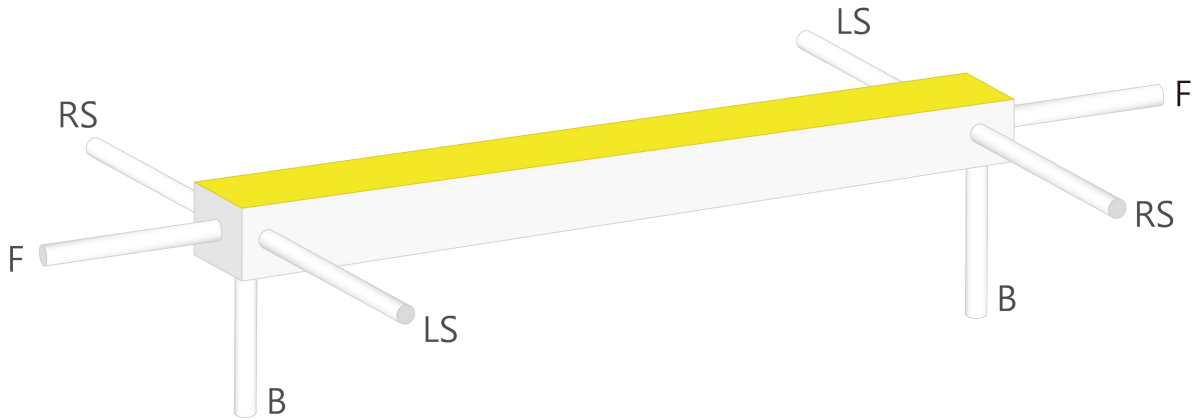
Example: LN0612XSV-2753-396-FF-OW-IJ-3.28'

\* Customizable—Contact Beamever representatives

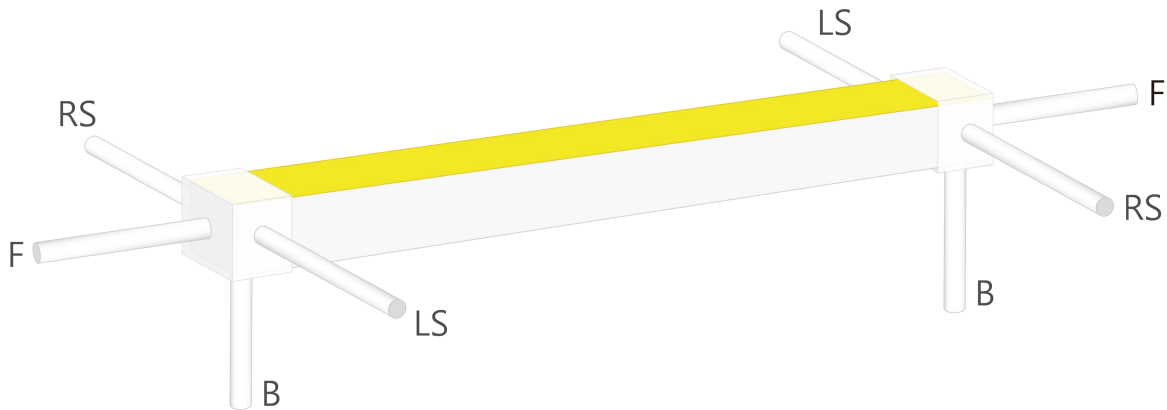
\* Do not install in an environment that is permanently flooded with water or high in humidity, as damage to the neon will occur.

## Feed Entry Options

For injected end cap (IP67), factory made only



For silicone end cap (IP67)

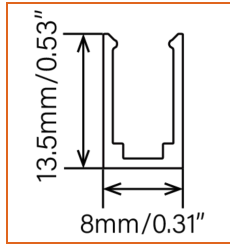
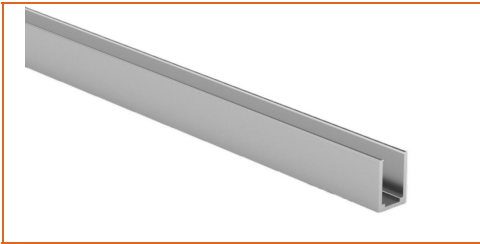


# LINIO NEON 0612X SV TW

Outdoor · Tunable White · Field cuttable

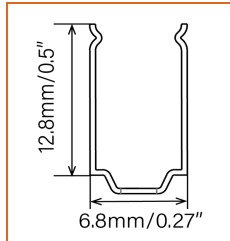


## Mounting Options



\* Standard length is 3.28'/pcs.

Name	Straight aluminum channel
Code	LN0612-SC
Material	Aluminum
Mounting style	Surface mounted
Length	3.28' (1m)
Width	0.31" (8mm)
Height	0.53" (13.5mm)
Internal width	/



\* Recommend use 1 mounting clip for 1' of neon.

Name	Mounting clip
Code	LN0612-BC
Material	Stainless Steel
Mounting style	Surface mounted
Length	0.59" (15m)
Width	0.27" (6.8mm)
Height	0.5" (12.8mm)
Internal Width	/

## Driver Options

Code	Max Load	Input	Output	Dimmable	Class 2	Environment	Size (L*W*H)
LM-100-24-U2A2	100W	100-277VAC	24V	Yes	No	Dry	13.86 x 1.69 x 1.18 inch

\* Please refer to the spec sheet of each power supply for more detailed information

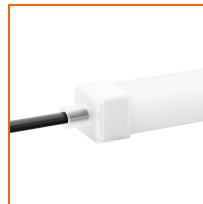
## Accessories Options (Optional, purchase for extra)



Name Silicone closed end cap

Code LN0612-SEC-C

Closed silicone end cap



Name Silicone front end cap

Code LN0612-SEC-F-3P

Silicone end cap front entry with 11.81" black cable, 3 pin



Name Silicone side end cap

Code LN0612-SEC-S-3P

Silicone end cap side entry with 11.81" black cable, 3 pin



Name Silicone bottom end cap

Code LN0612-SEC-B-3P

Silicone end cap bottom entry with 11.81" black cable, 3 pin



Name Male and female connectors

Code MFC-3P-67-W

Male and female connectors with 11.81" white cable, 3 pin



Name Male and female connectors

Code MFC-3P-67-B

Male and female connectors with 11.81" black cable, 3 pin

# LINIO NEON 0612X SV TW

Outdoor · Tunable White · Field cuttable



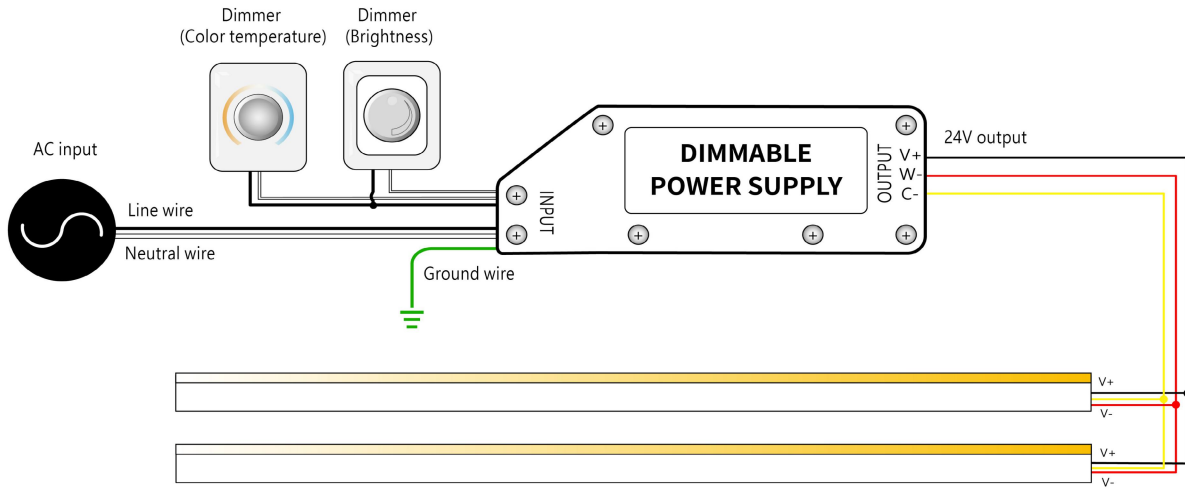
Name Extension connectors  
Code ETC-3P-67-1M  
Extension male and female connectors with 1m (3.28ft) white cable, 3 pin



Name Extension connectors  
Code ETC-3P-67-5M  
Extension male and female connectors with 5m (16.4ft) white cable, 3 pin

## Wiring Diagram

### Dimmable



\* Dimmers need to be purchased separately.