

LINIO NEON 360° RGBW Indoor · All-direction Bending · RGBW

Features

- 360° emitting provides unparalleled creative
- Factory assembly
- Low voltage DC24V
- 100 lumen outputs
- IP65 rated, ideal for indoor uses
- 5 years warranty



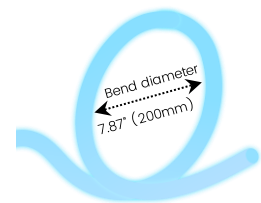
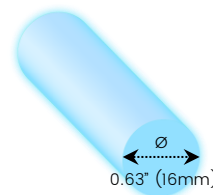
Date _____ Fixture type _____

Project name _____ Project phase _____



Dimension

Standard
3.28' (1m)



Order Code

Series	Environment	Voltage	Temp./Color	Power
LN360	W5 Wet (IP65)	24 DC24V	RGBW22 RGBW (W=2200K) RGBW27 RGBW (W=2700K) RGBW30 RGBW (W=3000K) RGBW35 RGBW (W=3500K) RGBW40 RGBW (W=4000K) RGBW45 RGBW (W=4500K)	488 4.88W/ft -100 lm/ft

Assembly Builder

End Cap ¹	Left Feed Entry		Right Feed Entry		Illuminated Length ²
IJ Injected (IP65)	F Front S Side C Closed	OW Open wire 3.28' MC Male connector with 0.98' cable FC Female connector with 0.98' cable NA Only for Closed Feed Entry	F Front S Side C Closed	OW Open wire 3.28' MC Male connector with 0.98' cable FC Female connector with 0.98' cable NA Only for Closed Feed Entry	Max. 16.4' -4.88W

1. Injected and clear injected end cap are factory-made only.

2. Production length = Illuminated length + End cap extension length (refer to below page for extension length of each end cap)

Temp./Color	4.88W/ft
■ R	14
■ G	44
■ B	8
■ W22	45
■ W27	50
■ W30	50
■ W35	51
■ W40	51
■ W45	51
■ RGBW22	110
■ RGBW27	113
■ RGBW30	113
■ RGBW35	114
■ RGBW40	114
■ RGBW45	114
Max. Run for Class 2 Low Voltage (ft)	15.7
Max. Run Length (ft)	16.4
Storage Temperature	-13-140°F
Ambient Temperature	-13-113°F

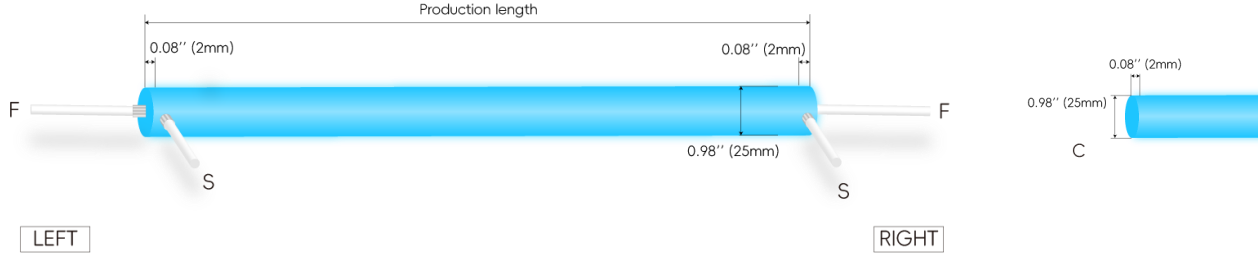
Technical Details

Efficacy	23.2lm/W @RGBW30 4.88W
CRI	Ra ≥ 90
Beam Angle	360°
LED MacAdam	3 steps
Life (L70)	> 30,000 hours
Max. Length Per Reel	16.4' (5M)
Finish	Matte

LINIO NEON 360° RGBW Indoor · All-direction Bending · RGBW

Feed Entry / End Cap Options

IJ: Injected end cap – IP65, factory-made only



Connector Wire Options



OW: Open wire **Dry only**
Standard 3.28' (1m), 20 AWG (wire length customizable)

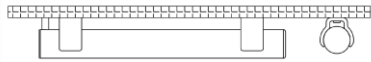


MC: Male connector, **Wet**
Standard 0.98' (30cm), 20 AWG



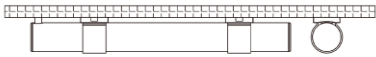
FC: Female connector, **Wet**
Standard 0.98' (30cm), 20 AWG

Mounting Options



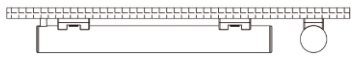
LN360-SFC-O

Name Surface mount clear bracket-open clip



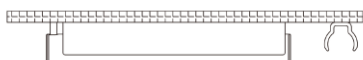
LN360-SFC-C

Name Surface mount clear bracket-closed clip



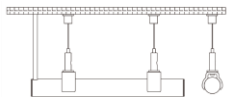
LN360-SFC-L

Name Surface mount clear bracket-low profile clip



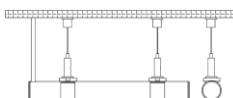
LN360-SFC-PC

Name Surface mount clear bracket-PC channel



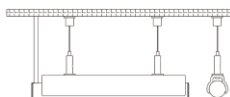
LN360-SPC-O

Name Suspended mount clear bracket-open clip



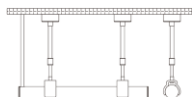
LN360-SPC-C

Name Suspended mount clear bracket-closed clip



LN360-SPC-PC

Name Suspended mount clear bracket-PC channel

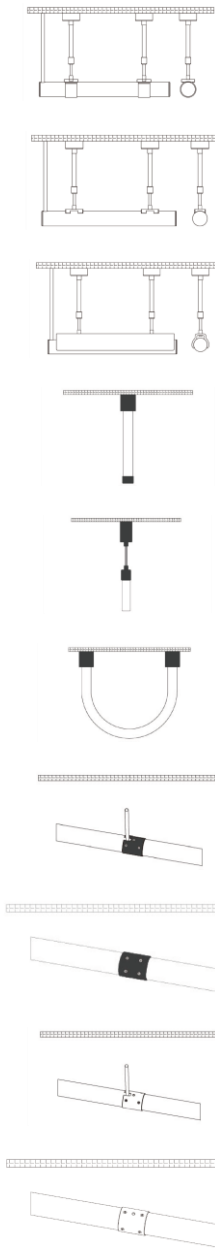


LN360-TLC-O

Name Telescoping clear bracket-open clip (Adjustable Length: 20-39')

LINIO NEON 360° RGBW

Indoor · All-direction Bending · RGBW



LN360-TLC-C

Name Telescoping clear bracket-closed clip (Adjustable Length: 20-39")

LN360-TLC-L

Name Telescoping clear bracket-low profile clip (Adjustable Length: 20-39")

LN360-TLC-PC

Name Telescoping clear bracket-PC channel (Adjustable Length: 20-39")

LN360-VB

Name Vertical metal flush surface mount bracket-black

LN360-VSB

Name Vertical pendant suspended mount bracket-black

LN360-UB

Name U-shaped metal flush mount bracket-black

LN360-JNB-S

Name Metal joiner bracket-black (side cable entry only)

LN360-JNB-C

Name Metal joiner bracket-black (closed end cap)

LN360-JNC-S

Name Joiner bracket-clear (side cable entry only)

LN360-JNC-C

Name Joiner bracket-clear (closed end cap)

LINIO NEON 360° RGBW Indoor · All-direction Bending · RGBW

Drivers

Non-dimmable

Code	Max Load	Input	Output	Dimmable	Class 2	Environment	Size (L *W *H)
KV-24030-ASW	30W	100-277VAC	24V	No	Yes	Dry/Damp	6.10" *2.12" *0.78"
KV-24060-ASW	60W	100-277VAC	24V	No	Yes	Dry/Damp	7.00" *2.40" *0.94"
KV-24096-ASW	96W	100-277VAC	24V	No	Yes	Dry/Damp/Wet	9.05" *2.75" *1.69"
KV-24150-ASW	150W	100-277VAC	24V	No	No	Dry/Damp/Wet	10.07" *3.07" *1.85"
KV-24200-ASW	200W	100-277VAC	24V	No	No	Dry/Damp/Wet	10.07" *3.07" *1.85"
KV-24300-ASW	300W	100-277VAC	24V	No	No	Dry/Damp/Wet	10.86" *3.07" *1.85"

DMX512-dimmable

Code	Max Load	Input	Output	Dimmable	Class 2	Environment	Size (L *W *H)
KVX-24096-4C-A	96W	100-277VAC	24V	Yes	Yes	Dry/Damp/Wet	9.05" *3.07" *0.98"
KVX-24150-4C-A	150W	100-277VAC	24V	Yes	No	Dry/Damp/Wet	10.90" *3.07" *0.98"
KVX-24200-4C-A	200W	100-277VAC	24V	Yes	No	Dry/Damp/Wet	10.90" *3.07" *0.98"
KVX-24300-4C-A	300W	100-277VAC	24V	Yes	No	Dry/Damp/Wet	11.85" *3.07" *0.98"

DMX Decoders

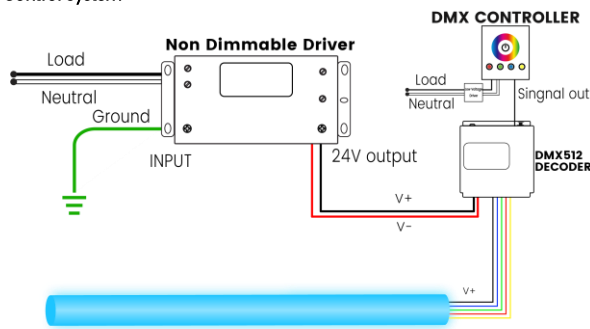
Code	Description
LT-904	4 channels output, up to 576W output power
LT-916	16 channels output, up to 1152W output power
LT-932	32 channels output, up to 2304W output power

Controllers

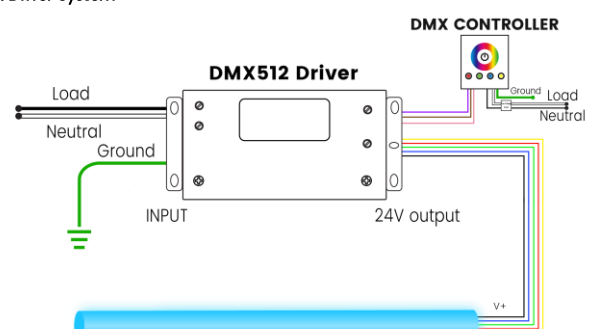
Code	Description
DINA-DR micro	DMX 60 channels, DMX Stand Alone controller with 10 scenes, USB connectivity for programming
SLESA-U9	DMX 256 channels, USB connection, standalone mode with 1 area and 20 scenes
STICK-GA2	DMX 512 channels, ready to use (pre-loaded with 8 scenes and 170 RGB fixtures)
STICK-CW4	DMX 1024 channels, up to 36 scenes stored and directly recalled via 6 touch sensitive buttons

Wiring Diagram

DMX Control System



DMX Driver System



Additional Accessories (Optional, purchase for extra)



MCW-5P-67

Male connector with 0.98' (30cm) white cable, 5 pin, IP67, Wet, 20 AWG

FCW-5P-67

Female connector with 0.98' (30cm) white cable, 5 pin, IP67, Wet, 20 AWG

MCB-5P-67

Male connector with 0.98' (30cm) black cable, 5 pin, IP67, Wet, 20 AWG

FCB-5P-67

Female connector with 0.98' (30cm) black cable, 5 pin, IP67, Wet, 20 AWG