

LINIO NEON 360° TW Indoor · All-direction Bending · Tunable White

Features

- 360° emitting provides unparalleled creative
- Factory assembly
- Low voltage DC24V
- 100 lumen outputs
- IP65 rated, ideal for indoor uses
- 5 years warranty



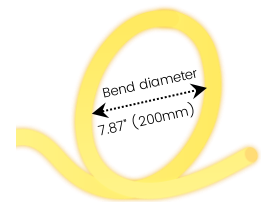
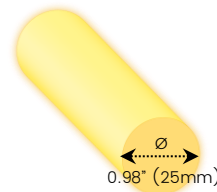
Date _____ Fixture type _____

Project name _____ Project phase _____



Dimension

Standard
3.28' (1m)



Order Code

Series	Environment	Voltage	Temp./Color	Power
LN360	W5 Wet (IP65)	24 DC24V	2750 2700K+5000K	305 3.05W/ft -100 lm/ft

Assembly Builder

End Cap ¹	Left Feed Entry		Right Feed Entry		Illuminated Length ²
IJ Injected (IP65)	F Front	OW Open wire 3.28'	F Front	OW Open wire 3.28'	Max. 16.4' -3.05W
	S Side	MC Male connector with 0.98' cable	S Side	MC Male connector with 0.98' cable	
	C Closed	FC Female connector with 0.98' cable	C Closed	FC Female connector with 0.98' cable	
		NA Only for Closed Feed Entry		NA Only for Closed Feed Entry	

1. Injected end cap is factory-made only.

2. Production length = Illuminated length + End cap extension length (refer to below page for extension length of each end cap)

Temp./Color	3.05W/ft
2700K	33
5000K	56
2700K+5000K	99
Max. Run for Class 2 Low Voltage (ft)	16.4
Max. Run Length (ft)	16.4
Storage Temperature	-13-140°F
Ambient Temperature	-13-113°F

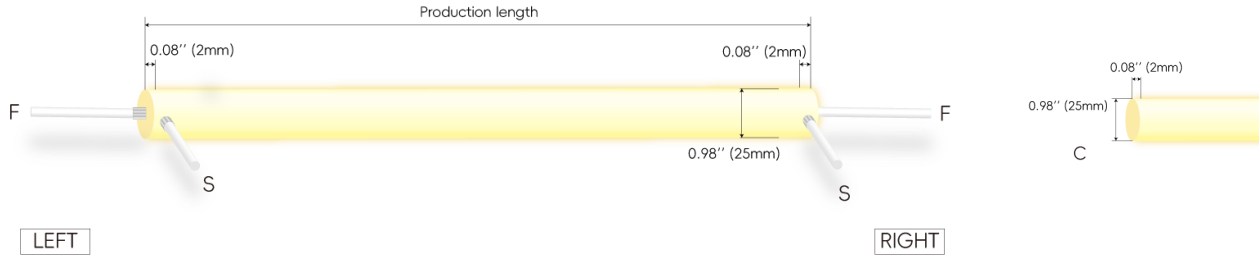
Technical Details

Efficacy	32.5lm/W @2700K+5000K 3.05W
CRI	Ra ≥ 90
Beam Angle	360°
LED MacAdam	3 steps
Life (L70)	> 54,000 hours
Max. Length Per Reel	16.4' (5M)
Finish	Matte

LINIO NEON 360° TW Indoor · All-direction Bending · Tunable White

Feed Entry / End Cap Options

IJ: Injected end cap – IP65, factory-made only



Connector Wire Options



OW: Open wire **Dry only**
Standard 3.28' (1m), 20 AWG (wire length customizable)

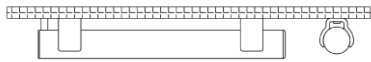


MC: Male connector, **Wet**
Standard 0.98' (30cm), 20 AWG



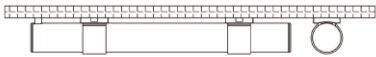
FC: Female connector, **Wet**
Standard 0.98' (30cm), 20 AWG

Mounting Options



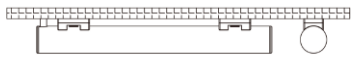
LN360-SFC-O

Name Surface mount clear bracket-open clip



LN360-SFC-C

Name Surface mount clear bracket-closed clip



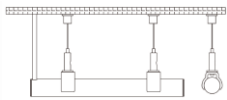
LN360-SFC-L

Name Surface mount clear bracket-low profile clip



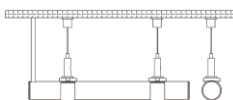
LN360-SFC-PC

Name Surface mount clear bracket-PC channel



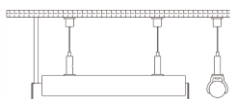
LN360-SPC-O

Name Suspended mount clear bracket-open clip



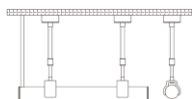
LN360-SPC-C

Name Suspended mount clear bracket-closed clip



LN360-SPC-PC

Name Suspended mount clear bracket-PC channel



LN360-TLC-O

Name Telescoping clear bracket-open clip (Adjustable Length: 20-39')

LINIO NEON 360° TW

Indoor · All-direction Bending · Tunable White



LN360-TLC-C

Name Telescoping clear bracket-closed clip (Adjustable Length: 20-39")

LN360-TLC-L

Name Telescoping clear bracket-low profile clip (Adjustable Length: 20-39")

LN360-TLC-PC

Name Telescoping clear bracket-PC channel (Adjustable Length: 20-39")

LN360-VB

Name Vertical metal flush surface mount bracket-black

LN360-VSB

Name Vertical pendant suspended mount bracket-black

LN360-UB

Name U-shaped metal flush mount bracket-black

LN360-JNB-S

Name Metal joiner bracket-black (side cable entry only)

LN360-JNB-C

Name Metal joiner bracket-black (closed end cap)

LN360-JNC-S

Name Joiner bracket-clear (side cable entry only)

LN360-JNC-C

Name Joiner bracket-clear (closed end cap)

LINIO NEON 360° TW Indoor · All-direction Bending · Tunable White

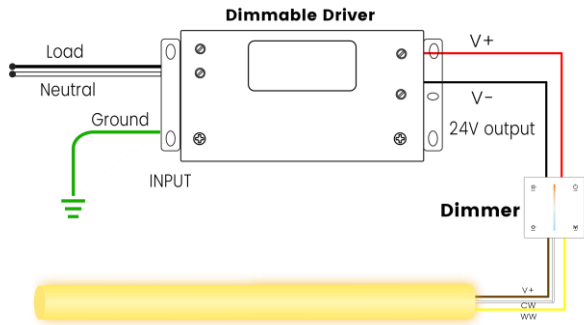
Drivers

Dimmable

Code	Max Load	Input	Output	Dimmable	Class 2	Environment	Size (L *W *H)
LM-100-24-U2A2	100W	100-277VAC	24V	Yes	No	Dry	13.86" *1.69" *1.18"

Wiring Diagram

Dimmable



Additional Accessories (Optional, purchase for extra)



MCW-3P-67

Male connector with 0.98' (30cm) white cable, 3 pin, IP67, Wet, 20 AWG

FCW-3P-67

Female connector with 0.98' (30cm) white cable, 3 pin, IP67, Wet, 20 AWG

MCB-3P-67

Male connector with 0.98' (30cm) black cable, 3 pin, IP67, Wet, 20 AWG

FCB-3P-67

Female connector with 0.98' (30cm) black cable, 3 pin, IP67, Wet, 20 AWG