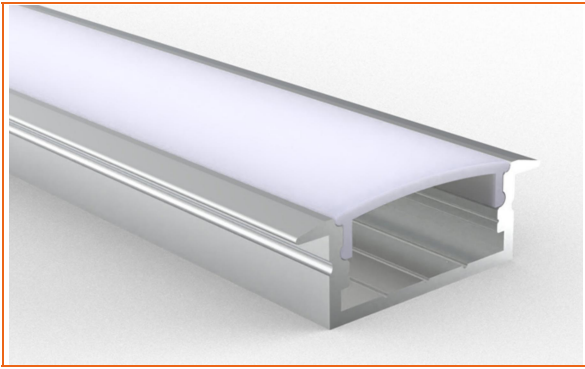


# BE1204 Extrusion

# Beamever



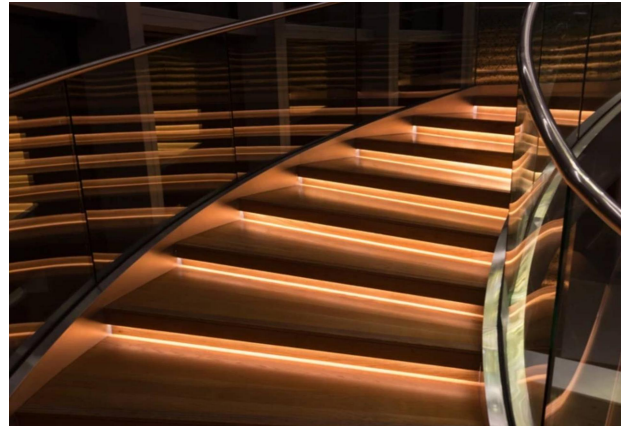
## Features

- AL6063-T5 Aluminum
- Recessed mounting

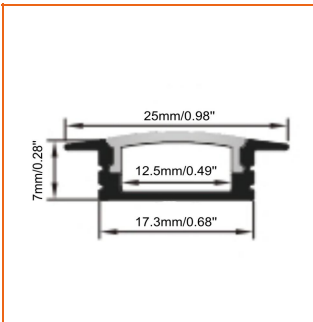
## Category

- Universal lighting

## Application



## Technical Drawing



## Mounting



## Order Code

Product	Color	Lens	Lengths
BE1204	<ul style="list-style-type: none"><li>■ S = Silver anodized</li><li>□ W = White lacquered</li><li>■ B = Black anodized</li></ul>	<ul style="list-style-type: none"><li>OP = Opal (80-85% Transmittance)</li><li>FR = Frosted (90% Transmittance)</li><li>CL = Clear (99% Transmittance)</li></ul>	<ul style="list-style-type: none"><li>3.28ft = 3.28ft aluminium profile (including 3.28ft lens cover + 2pcs end caps+2pcs mounting clips)</li><li>6.56ft = 6.56ft aluminium profile (including 6.56ft lens cover + 2pcs end caps+4pcs mounting clips)</li></ul>

Example: BE1204-S-OP-3.28ft

## Accessories (Included)



Plastic End Cap



Metal Clip

## (Order separately)



Plastic Clip

Code: BE1204-PC

## Notes

\*Please note that unless otherwise indicated, tape lights, extrusions and lenses will come separately and not assembled.